



UNDERWATER LIFT BAGS
ENGINEERED FROM THE BOTTOM UP!



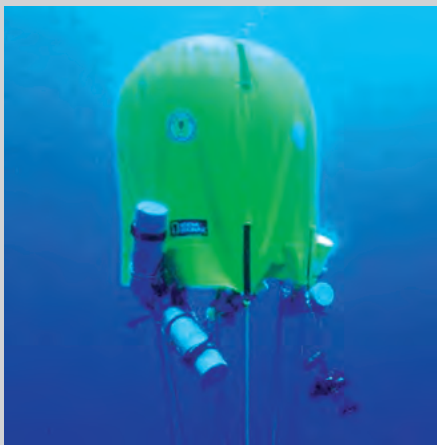
INNOVATORS IN BUOYANCY AND ENGINEERED INFLATABLES



Polyurethane coated nylon fabric providing superior performance for all SUBSALVE products.



Product proof load testing of Salvage Pontoon 70,000 lbs.



Custom inflatable underwater decompression habitat used by Michael Lombardi with National Geographic



WHY THE WORLD TURNS TO SUBSALVE

SUBSALVE is the worldwide leader and innovator in the design and manufacture of engineered inflatables. Our underwater lift bags are specified to meet the toughest challenges in recreational, commercial, scientific, and military applications. Since 1977, we have provided solutions and expertise for aircraft recovery, ship, yacht, and boat salvage, marine construction, offshore oilfield diving, and explosive ordnance disposal. We are proud to include the US Department of Defense, all branches of the US Armed Forces, NASA, and the FBI on our list of satisfied and ongoing customers, as well as leading companies in the private sector and the governments of more than 30 foreign countries.

The polyurethane difference

SUBSALVE is the only major lift bag brand that offers polyurethane-coated fabrics in all of our products. We use high-strength synthetic base fabrics including nylon, polyester, and Kevlar which have been coated with urethane and urethane blends. The result? Our lift bags are more puncture-, abrasion-, and chemical-resistant than other conventional inflatables. This allows for a longer service life with less maintenance required. All SUBSALVE products are designed to perform in harsh and hostile environments. With their exclusive polyurethane coatings, you can count on them to get the job done like no other inflatable.

Give us your toughest challenge

SUBSALVE has a legacy of meeting tough customer challenges with innovative solutions, including custom products for specialized applications. Multiple patents attest to our expert engineering and proven products.

Why SUBSALVE?

- **Expertise** – Not only do we focus exclusively on the design and manufacture of engineered inflatables; our credentials include formal dive experience, and more than 4 decades of hands on experience in the field. *We know the challenges you face and can help you meet them!*
- **Quality** – Our products, including all components, are proudly made in the USA by skilled craftsmen. Every SUBSALVE product is tested prior to shipping to ensure reliable performance. *You can work with our solutions with confidence!*
- **Service** – We maintain an inventory of all standard products to ensure prompt delivery. We offer custom design services to address special needs. We are available 24 hours a day via toll-free telephone. *We are ready to respond whenever you need us!*
- **Price** – We purchase materials in large volumes from vendors near our factory, allowing us to pass savings along to our customers. We also offer volume and prepayment discounts. *We beat competitors on price and always beat them in quality and value.*
- **Compliance and Warranty** – All SUBSALVE products are compliant with IMCA (International Marine Construction Association) D-016-AIRBAGS, ABS, and U.S. Department of Defense Standards. All carry a one-year warranty. *Don't put your projects or your people at risk – insist on SUBSALVE USA for high quality.*



SUBSALVE USA

Innovators in bouyancy and engineered inflatables



SUBSALVE Credentials

SUBSALVE USA was founded in 1977 and has provided solutions, products, and services to thousands of satisfied end-users worldwide. SUBSALVE production, testing, and quality control methods are approved by the U.S. Department of Defense and have been accepted by NATO and are compliant with IMCA and ABS.

CONTENTS

COVER PHOTO: James Cameron's Deepsea Challenger used to set record-breaking 35,787 ft. solo dive to the deepest known place on Earth, the Mariana Trench off the coast of Guam. Photograph by Mark Thiessen for National Geographic Magazine, June 2013

COMMERICAL LIFT BAGS—Open Bottom Parachute	4
PROFESSIONAL LIFT BAGS—Open Bottom Parachute	5
PROFESSIONAL ENCLOSED LIFT BAGS—Enclosed Bottom Parachute	6
ENCLOSED FLOTATION BAGS—Enclosed Pillows	7
ENCLOSED SHALLOW WATER FLOTATION BAGS—Enclosed Pillows	8
SALVAGE PONTOONS—Enclosed Cylinders	9
SALVAGE PONTOONS - VERTICAL—Enclosed Cylinders	10
MARK V/ORCA—Underwater Ordnance Disposal System	11
VEHICLE RECOVERY SYSTEMS—Auto, Truck, Bus & Aircraft	12
QUAD BAGS, RAPID RECOVERY SYSTEM	13
CABLE & PIPELINE FLOATS, PROPELLER BAGS, BOMB RECOVERY SYSTEM	14
WATER LOAD TEST BAGS—Crane Load Test Bags	15
LIFEBOAT DAVIT WEIGHT TEST BAGS	16
FEND AIR®—Inflatable Marine Fenders	17
AIRCRAFT LIFTING BAGS	18
PIPE PLUGGERS®—Inflatable Pipe Pluggers/Stopppers	19
INFLAT-A-TANK®—Flexible liquid storage bladders	20
ACCESSORIES	21
CLIENT LIST	22
PHOTO GALLERY	23



SUBSALVE USA corporate headquarters and state of the art manufacturing facility located in North Kingstown, Rhode Island, USA.



Commercial Lift Bag replacing a flange plate at the Atlanta Aquarium.



Commercial Lift Bags lifting artifacts from Sir Captain Morgan's shipwreck.



Commercial Lift Bags being used in the NASA Neutral Buoyancy Lab - International Space Station mock up.



COMMERCIAL LIFT BAGS

Multiple Applications

- Light salvage
- Object recovery
- Underwater construction
- Scientific research

Excellent portability

- Fraction of the cost of a barge or crane
- Easy for a single diver to use
- Especially suited for remote locations
- Deployable from small craft

Easy to use

- Proprietary SUBSALVE USA Plunger Dump Valve allows air control with a push of a button at the top of the bag and a lanyard at the bottom—vent air from above, beside, or below the lifting bag to achieve desired ascent rate.
- 1/4" NPT inflation port for remote filling, multiple bag manifolding, or to install optional stainless steel quick disconnect.
- Ready for immediate use—factory-equipped with all necessary hardware.

Fabric

- Urethane-coated nylon—high-strength and heavy-duty
- Superior abrasion resistance
- Resistant to most petro-chemicals
- UV-resistant
- Low maintenance requirements and easy to clean
- RF welded seams

Lift Straps Designed for Safety

- 6000lb.-load rated high strength resin-treated nylon webbing
- Sewn directly to the bottom of the bag
- Safe working ratio of 6:1



Model	Lift Capacity	Diameter	Overall Height	Packaged Cubic Dimension	Weight
C-100	120lb / 55kg	16in / 0.41m	30in / 0.77m	14in x 10in x 6in / .36m x .26m x .15m	5lb / 2.27kg
C-200	220lb / 100kg	22in / 0.56m	36in / 0.92m	15in x 11in x 7in / .38m x .28m x .18m	7lb / 3.18kg
C-500	550lb / 250kg	29in / 0.74m	43in / 1.07m	15in x 11in x 7in / .38m x .28m x .18m	12lb / 5.45kg

- Each SUBSALVE USA lift bag is tested prior to shipping.
- Custom sizes available.
- All Subsvalve USA products are compliant with IMCA D-016-AIRBAGS, ABS, U.S. Department of Defense Standards.



Professional lift bags used to lift a 100 ton concrete abutment during the Big Dig tunnel construction in Boston.



Raising a 100 ft sailboat using PF-12000's in Bora Bora.



Raising the Spiegel Grove, a 510 ft U.S. Navy troop transport ship.



PROFESSIONAL LIFT BAGS

Innovative Design

- When the U.S. Navy asked us to develop a flotation device that would dependably withstand particularly abusive conditions, SUBSALVE USA produced the 5-ton Deep Ocean Lift Bag, which has unprecedented strength, low elasticity and superior resistance to abrasion and chemical attack. It became our standard Professional Lift Bag design.

Multiple Applications

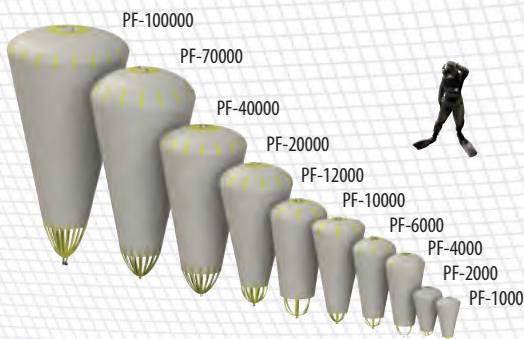
- Our most versatile and easy-to-use, these open-bottom, parachute-shaped lift bags with a single attachment point are essential in construction, heavy and light salvage and many offshore tasks.
- "Inverted water droplet" design facilitates maximum lift capacity with least possible weight, with stress distributed evenly over the fabric surface.
- Equipped with all the necessary hardware and ready for immediate use.
- Each SUBSALVE USA lift bag is tested prior to shipping.

Fabric

- Urethane-coated nylon—high-strength and heavy-duty
- Superior abrasion resistance
- Resistant to most petro-chemicals
- UV-resistant
- Low maintenance requirements and easy to clean
- RF welded seams

Easy to use

- Proprietary Plunger Dump Valve - air control with push-button at top of bag and lanyard at bottom. Vent air from above, beside or below lift bag to achieve desired ascent rate as well as 1/4" NPT inflation port.
- Below 2 tons
 - Multiple nylon lift straps sewn directly to bottom of lift bag, which bears load and provides safe working ratio of 6:1.
- 2 tons and over
 - Designed with a replaceable heavy-duty nylon webbing lift harness fabricated into the skin of the bag, which bears the load and provides a safe working ratio of 6:1.
- Fitted with a 3/4" NPT inflation port with quick disconnect or cam lock fitting and a 3/4" stainless steel ball valve for rapid deflation.



Model	Lift Capacity	Diameter	Overall Height	Packaged Cubic Dimension	Weight
PF-1000	1100lb / 500kg	35in / 0.90m	56in / 1.44m	18in x 13in x 10in / .46m x .33m x .26m	17lb / 7.7kg
PF-2000	2200lb / 1000kg	48in / 1.22m	59in / 1.50m	20in x 15in x 9.5in / .51m x .38m x .29m	30lb / 13.6kg
PF-4000	4400lb / 2000kg	54in / 1.38m	94in / 2.41m	24in x 24in x 24in / .61m x .61m x .61m	50lb / 22.7kg
PF-6000	6600lb / 3000kg	61in / 1.56m	108in / 2.77m	41in x 41in x 8in / 1.04m x 1.04m x .21m	80lb / 36.3kg
PF-10000	11000lb / 5000kg	72in / 1.83m	120in / 3.05m	41in x 41in x 8in / 1.04m x 1.04m x .25m	105lb / 47kg
PF-12000	13200lb / 6000kg	80in / 1.79m	130in / 3.33m	41in x 41in x 12in / 1.04m x 1.04m x .31m	125lb / 56.7kg
PF-20000	22000lb / 10000kg	93in / 2.38m	146in / 4.10m	41in x 48in x 18in / 1.04m x 1.23m x .46m	190lb / 86.2kg
PF-40000	44000lb / 20000kg	120in / 3.07m	201in / 6.16m	41in x 48in x 24in / 1.04m x 1.23m x .62m	325lb / 147.7kg
PF-70000	77000lb / 35000kg	144in / 3.69m	258in / 6.77m	41in x 48in x 38in / 1.04m x 1.23m x .97m	410lb / 186.9kg
PF-100000	110000lb / 50000kg	166in / 4.22m	316in / 8.03m	40in x 50in x 54in / 1.02m x 1.27m x 1.37m	525lb / 238kg

- Each SUBSALVE USA lift bag is tested prior to shipping.
- Custom sizes available.
- All Subsvalve USA products are compliant with IMCA D-016-AIRBAGS, ABS, U.S. Department of Defense Standards.



PROFESSIONAL ENCLOSED LIFT BAGS

Multiple Applications

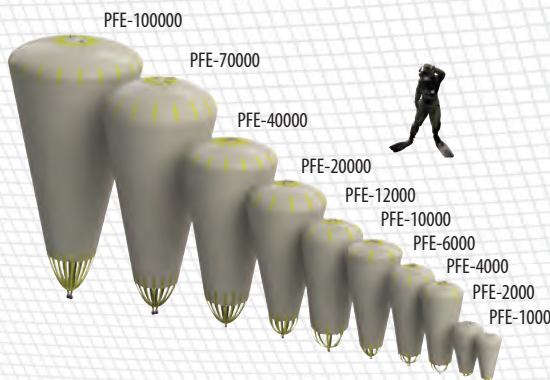
- Versatile and easy-to-use, these enclosed-bottom, parachute-shaped lift bags with a single attachment point are essential in construction, heavy and light salvage and many offshore tasks.
- "Inverted water droplet" design facilitates maximum lift capacity with least possible weight, with stress distributed evenly over the fabric surface.
- Able to be pre-inflated when necessary
- Will not dump air if the bag breaks the surface of the water
- Pressure relief valves at the bottom of the bag avoid over pressurization of the lift bag
- Equipped with all the necessary hardware and ready for immediate use.

Fabric

- Urethane-coated nylon—high-strength and heavy-duty
- Superior abrasion resistance
- Resistant to most petro-chemicals
- UV-resistant
- Low maintenance requirements and easy to clean
- RF welded seams

Easy to use

- Below 2 tons
 - Multiple nylon lift straps sewn directly to bottom of lift bag, which bears load and provides safe working ratio of 6:1.
 - Fitted with a 3/4" NPT inflation port with quick disconnect or cam lock fitting and a 3/4" stainless steel ball valve for rapid deflation.
- 2 tons and over
 - Designed with a replaceable heavy-duty nylon webbing lift harness fabricated into the skin of the bag, which bears the load and provides a safe working ratio of 6:1.
 - Fitted with a 3/4" NPT inflation port with quick disconnect or cam lock fitting and a 3/4" stainless steel ball valve for rapid deflation.



Model	Lift Capacity	Diameter	Overall Height	Packaged Cubic Dimension	Weight
PFE-1000	1100lb / 500kg	35in / 0.90m	56in / 1.44m	18in x 13in x 10in / .46m x .33m x .26m	17lb / 7.7kg
PFE-2000	2200lb / 1000kg	48in / 1.22m	59in / 1.50m	20in x 15in x 9.5in / .51m x .38m x .29m	30lb / 13.6kg
PFE-4000	4400lb / 2000kg	54in / 1.38m	94in / 2.41m	24in x 24in x 24in / .61m x .61m x .61m	50lb / 22.7kg
PFE-6000	6600lb / 3000kg	61in / 1.56m	108in / 2.77m	41in x 41in x 8in / 1.04m x 1.04m x .21m	80lb / 36.3kg
PFE-10000	11000lb / 5000kg	72in / 1.83m	120in / 3.05m	41in x 41in x 8in / 1.04m x 1.04m x .25m	105lb / 47kg
PFE-12000	13200lb / 6000kg	80in / 1.79m	130in / 3.33m	41in x 41in x 12in / 1.04m x 1.04m x .31m	125lb / 56.7kg
PFE-20000	22000lb / 10000kg	93in / 2.38m	146in / 4.10m	41in x 48in x 18in / 1.04m x 1.23m x .46m	190lb / 86.2kg
PFE-40000	44000lb / 20000kg	120in / 3.07m	201in / 6.16m	41in x 48in x 24in / 1.04m x 1.23m x .62m	325lb / 147.7kg
PFE-70000	77000lb / 35000kg	144in / 3.69m	258in / 6.77m	41in x 48in x 38in / 1.04m x 1.23m x .97m	410lb / 186.9kg
PFE-100000	110000lb / 50000kg	166in / 4.22m	316in / 8.03m	40in x 50in x 54in / 1.02m x 1.27m x 1.37m	525lb / 238kg

- Each SUBSALVE USA lift bag is tested prior to shipping.
- Custom sizes available.
- All Subsvalve USA products are compliant with IMCA D-016-AIRBAGS, ABS, U.S. Department of Defense Standards.



60 ft Yacht salvage using EFB-4000's and EFB-6000's. Photo Credit: Sea Tow Ocean City - Maryland , USA



Recovery of truck that fell through the ice. Timber Bay Scuba - Wisconsin, USA.



EFB-2000's used for the James Cameron's Deepsea Challenger mission to the bottom of the Mariana Trench.



ENCLOSED FLOTATION BAGS

When you need to float an object close to the surface, use SUBSALVE's "pillow" shaped Enclosed Flotation Bags in any position—upright or flat, outside or inside of structures—for vessel salvage, auto recovery, pipeline and cable installation and emergency flotation for ships, aircraft, submersibles and ROVs.

Adaptive

- Configure a multitude of rigging combinations.
- Use with a single pick point (shackle supplied on the bottom of the bag).
- Invert to use the multiple stainless steel rings on the top of the bag.

Fabric

- Urethane-coated nylon—high-strength and heavy-duty
- Superior abrasion resistance
- Resistant to most petro-chemicals
- UV-resistant
- Low maintenance requirements and easy to clean
- RF welded seams

Lifting Harness

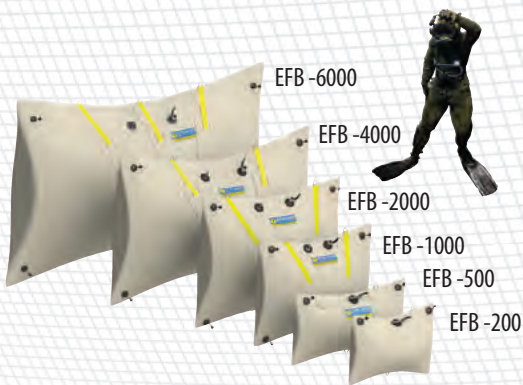
- Heavy nylon lift harness built into the body of the lift bag
- Safe working ratio of 6:1

Safe and easy to use

- Equipped with all necessary hardware—ready for immediate use
- 3/4" NPT inflation/deflation port equipped with ball valve
- Stainless steel quick disconnect for inflation
- Pressure relief valves: set to release at 2.5 psi above ambient pressure
- Enough pressure relief valves are installed in each bag to allow expanding to vent should a free ascent occur.

Model	Lift Capacity	Height	Length	Packaged Cubic Dimension	Weight	Attachment Points
EFB-200	220lb 100kg	29in .74m	38in .97m	15in x 11in x 7in .38m x .28m x .18m	12lb 5.4kg	1 bottom
EFB-500	550lb 250kg	32in .82m	51in 1.31m	17in x 12in x 8in .44m x .31m x .21m	20lb 9.1kg	2 top 1 bottom
EFB-1000	1100lb 500kg	44in 1.13m	51in 1.31m	18in x 13in x 10in .46m x .33m x .26m	32lb 14.5kg	2 top 1 bottom
EFB-2000	2200lb 1000kg	55in 1.41m	60in 1.54m	20in x 15in x 9.5in .51m x .38m x .24m	50lb 22.7kg	2 top 1 bottom
EFB-4000	4400lb 2000kg	69in 1.77m	75in 1.92m	22in x 15in x 13in .56m x .38m x .33m	70lb 31.7kg	2 top 1 bottom
EFB-6000	6600lb 3000kg	76in 1.94m	112in 2.87m	26in x 18in x 13in .57m x .45m x .33m	90lb 40.8kg	3 top 1 bottom

- Each SUBSALVE USA lift bag is tested prior to shipping.
- Custom sizes available.
- All Subsvalve USA products are compliant with IMCA D-016-AIRBAGS, ABS, U.S. Department of Defense Standards.





ENCLOSED SHALLOW WATER FLOTATION BAGS

When you need to float an object in extremely shallow water use SUBSALVE's shallow water "pillow" shaped Enclosed Flotation Bags (also referred to as boulder bags). Utilize them in any position - upright or flat, outside or inside of structures—for vessel salvage, auto recovery, pipeline and cable installation and emergency flotation for ships, aircraft, submersibles and ROVs.

Adaptive

- Configure with a multitude of rigging combinations.
- Use with a single or multiple attachment points around the perimeter of the bag.

Fabric

- Urethane-coated nylon—high-strength and heavy-duty
- Superior abrasion resistance
- Resistant to most petro-chemicals
- UV-resistant
- Low maintenance requirements and easy to clean
- RF welded seams

Lifting Harness

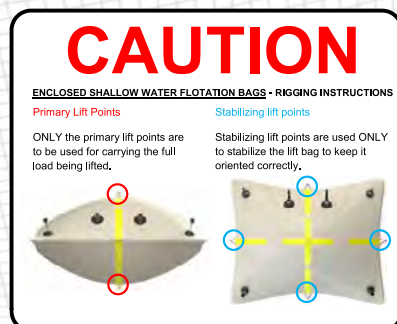
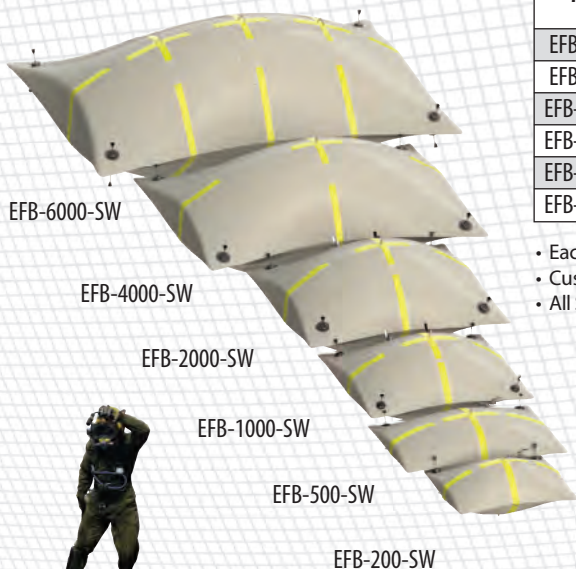
- Heavy nylon lift harness built into the body of the lift bag
- Safe working ratio of 6:1

Safe and easy to use

- Equipped with all necessary hardware—ready for immediate use
- 3/4" NPT inflation/deflation port equipped with ball valve
- Stainless steel quick disconnect for inflation
- Pressure relief valves: set to release at 2.5 psi above ambient pressure
- Enough pressure relief valves are installed in each bag to allow expanding to vent should a free ascent occur.

Model	Lift Capacity	Height	Length	Packaged Cubic Dimension	Weight
EFB-200-SW	220 lb/100 kg	29in/.74m	38in/.97m	15in x 11in x 7in/.38m x .28m x .18m	12 lb/5.4 kg
EFB-500-SW	550 lb/ 250 kg	32in/.82m	51in/1.31m	17in x 12in x 8in/.44m x .31m x .21m	20 lb/9.1 kg
EFB-1000-SW	1100 lb/ 500 kg	44in/1.13m	51in/1.31m	18in x 13in x 10in/.46m x .33m x .26m	32 lb/14.5 kg
EFB-2000-SW	2200 lb/1000 kg	55in/1.41m	60in/1.54m	20in x 15in x 9.5in/.51m x .38m x .24m	50 lb/22.7 kg
EFB-4000-SW	4400 lb/2000 kg	69in/1.77m	75in /1.92m	22in x 15in x 13in/.56m x .38m x .33m	70 lb/31.7 kg
EFB-6000-SW	6600 lb/3000 kg	76in /1.94m	112in/2.87m	26in x 18in x 13in/.57m x .45m x .33m	90 lb/40.8 kg

- Each SUBSALVE USA lift bag is tested prior to shipping.
- Custom sizes available.
- All Subsvalve USA products are compliant with IMCA D-016-AIRBAGS, ABS, U.S. Department of Defense Standards.





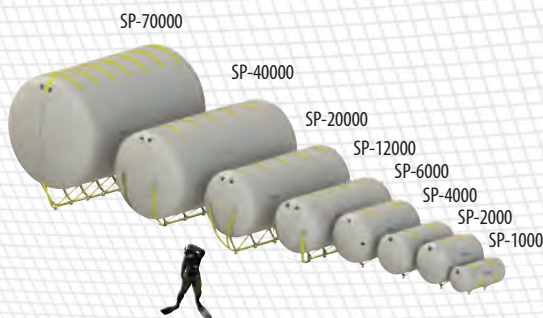
SP-70000's raising the Russian K-77 submarine.



SP-70000's and SP-40000's used to reduce the draft of a newly constructed tugboat during launch. Photo Credit: Ocean, Quebec, Canada.



SP-6000's used to support a pipeline during installation.



SALVAGE PONTOONS

Totally-enclosed, cylindrical bags are ideal for shallow water salvage, reducing the draft of a vessel or raising an object closer to the surface. They are invaluable in cable and pipeline operations and where long tows are planned.

Fabric

- Urethane-coated nylon—high-strength and heavy-duty
- Superior abrasion resistance
- Resistant to most petro-chemicals
- UV-resistant
- Low maintenance requirements and easy to clean
- RF welded seams

Fittings

- Replaceable, heavy-duty nylon webbing lift harness is built into the body of the lift bag, with a safe working ratio of 6:1
- The harness maintains the lift bag in a horizontal position while insuring maximum stability
- Equipped with shackles, valves and all necessary hardware for immediate use
- 3/4" NPT inflation port with 3/4" stainless steel ball valves for inflation and deflating
- Stainless steel quick disconnect for inflation
- Pressure relief valves set to release at 2.5psi above ambient pressure

Available in both standard cylinder and elongated tubes

CAUTION: Salvage Pontoons have multiple attachment points. All attachment points must be connected with the shackles provided, and the load evenly distributed. Large pontoons may require a separate lifting beam to evenly distribute the load.

Model	Lift Capacity	Height	Length	Packaged Cubic Dimension	Weight	Attachment Points
SP-1000	1100lb 500kg	28in .72m	48in 1.23m	20in x 15in x 9.5in .51m x .38m x .2 m	30lb 13kg	2
SP-2000	2200lb 1000kg	42in 1.13m	52in 1.23m	22in x 15in x 13in .56m x .38m x .33m	50lb 23kg	2
SP-4000	4400lb 2000kg	44in 1.13m	78in 2.05m	26in x 18in x 13in .67m x .46m x .33m	80lb 36kg	2
SP-6000	6600lb 3000kg	53in 1.36m	68in 2.05m	41in x 41in x 12in 1.05m x 1.05m x .31m	97lb 44kg	2
SP-12000	12200lb 5500kg	64in 1.54m	120in 3.10m	41in x 41in x 18in 1.05m x 1.05m x .46m	140lb 64kg	4
SP-20000	22000lb 10000kg	69in 1.77m	162in 4.15m	41in x 48in x 24in 1.05m x 1.23m x .62m	190lb 86kg	4
SP-40000	44000lb 20000kg	92in 2.36m	181in 4.64m	41in x 48in x 38in 1.05m x 1.23m x .97m	325lb 173kg	5
SP-70000	77000lb 35000kg	115in 3.08m	207in 4.77m	41in x 48in x 48in 1.05m x 1.23m x 1.23m	425lb 193kg	7

- Each SUBSALVE USA lift bag is tested prior to shipping.
- Custom sizes available.
- All Subsvalve USA products are compliant with IMCA D-016-AIRBAGS, ABS, U.S. Department of Defense Standards.



SALVAGE PONTOONS - VERTICAL



Totally-enclosed, cylindrical bags are ideal for shallow water salvage, reducing the draft of a vessel or raising an object closer to the surface. They are invaluable in cable and pipeline operations. These bags are rigged with a single bottom and top pick point with internal strap to allow for the load to be lifted from the top of the bag.

Fabric

- Urethane-coated nylon—high-strength and heavy-duty
- Superior abrasion resistance
- Resistant to most petro-chemicals
- UV-resistant
- Low maintenance requirements and easy to clean
- RF welded seams

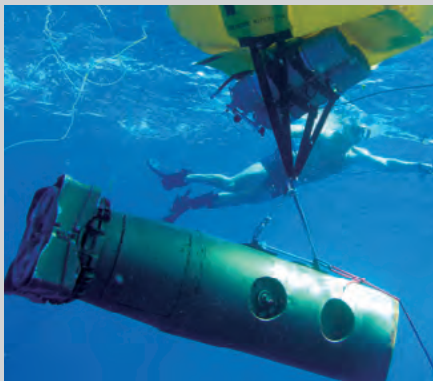
Fittings

- Replaceable, heavy-duty nylon webbing lift harness is built into the body of the lift bag, with a safe working ratio of 6:1
- The harness maintains the lift bag in a vertical position while insuring maximum stability
- Equipped with shackles, valves and all necessary hardware for immediate use
- Two 3/4" NPT inflation ports with 3/4" stainless steel ball valves for inflation and deflation
- Pressure relief valves set to release at 2.5psi above ambient pressure

Model	Lift Capacity	Diameter	Height	Packaged Cubic Dimension	Weight
SPV-2000	2200 lb/1000 kg	38in/0.97m	56in/1.42m	22in x 15in x 13in/.56m x .38m x .33m	50 lb/23 kg
SPV-4000	4400 lb/2000 kg	48in/1.22m	66in/1.68m	26in x 18in x 13in/.67m x .46m x .33m	80 lb/36 kg
SPV-6000	6600 lb/3000 kg	59in/1.5m	82in/2.08m	41in x 41in x 12in/1.05m x 1.05m x .31m	97 lb/44 kg
SPV-10000	11000 lb/5000 kg	65in/1.65m	105in/2.67m	41in x 41in x 16in/1.05m x 1.05m x .41m	130 lb/59 kg

- Each SUBSALVE USA lift bag is tested prior to shipping.
- Custom sizes available.
- All Subsalve USA products are compliant with IMCA D-016-AIRBAGS, ABS, U.S. Department of Defense Standards.





MARK V/ORCA

U/W ORDNANCE DISPOSAL SYSTEM

- This self-contained system is specifically designed for the removal of underwater mines, weapons or explosives.
- The system can be deployed by a single diver from a remote location, such as an inflatable boat.
- Designed to operate to full lift capacity to a depth of 175ft with the standard two cylinder kit, and the 330ft with the quad cylinder kit.
- Equipped with all necessary hardware – ready for immediate use.
- Each SUBSALVE USA lift bag is tested prior to shipping.
- Available in magnetic or non-magnetic MIL specification MIL-M-19595
- ROV deployable

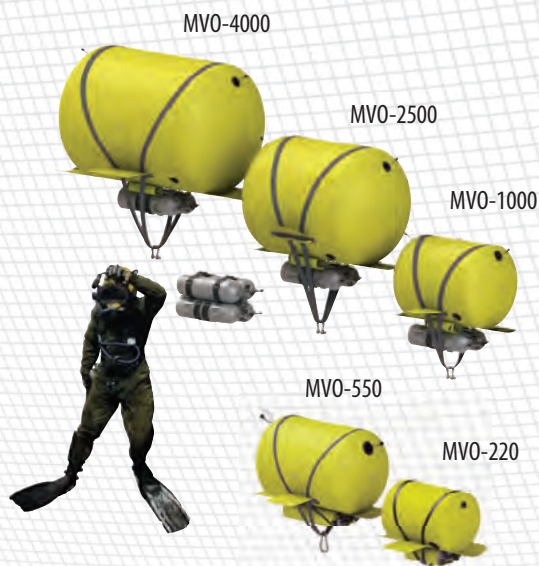
The Mark V/Orca base system is available in 2,500lb (1,200kg) and 4,400lb (2000kg) versions and includes:

- One enclosed lift bag manufactured of heavy-duty yellow 40 oz. urethane-coated nylon fabric for high abrasion resistance and fuel resistance.
- Two 80 ft³ aluminum or 100 ft³ aluminum or 87 ft³ fiber-wrapped cylinders.
- Pressure relief valves
- Inflation manifold with hoses
- Tank harness
- Actuation valve
- Surface command unit
- Manual and electrical actuation



Optional Items

- Carry bag
- Rigid storage/shipping box with carrying handles
- Time delay actuator
- Pneumatic actuation
- Acoustic actuation
- Spare parts kit
- Tool kit
- Repair Kit
- Quad cylinder kit (allows for deeper operational depth)

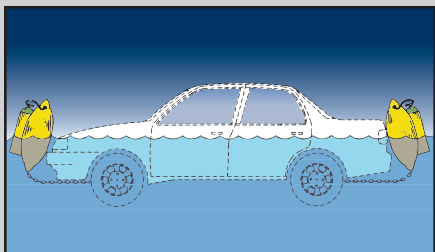


The Mark V/Orca Underwater Explosive Ordnance Disposal System replaces the obsolete U.S. Navy Mark II Mod I Flotation Bladder (NSN #8465-00-992-6689) of which SUBSALVE delivered over 200 units over the last decade.

The new Mark V/Orca System is approved by the U.S. Navy and is in use by over 25 navies throughout the world.

Model	Lift Capacity	Diameter	Length	Packaged Cubic Dimension	Weight
MVO-220	220lb / 100kg	18in / 0.46m	24in / .61m	18in x 13in x 10in / .46m x .33m x .25m	18lb / 8.2kg
MVO-550	550lb / 250kg	24in / .61m	36in / .92m	26in x 18in x 13in / .61m x .46m x .33m	36lb / 16.4kg
MVO-1000	1100lb / 500kg	31in / 0.79m	42in / 1.07m	24in x 24in x 30in / .61m x .61m x .76m	95lb / 43kg
MVO-2500	2500lb / 1200kg	43in / 1.09m	61in / 1.55m	37in x 27in x 19in / .94m x .69m x .76m	145lb / 66kg
MVO-4000	4400lb / 2000kg	48in / 1.22m	74in / 1.88m	56in x 27in x 36in / 1.42m x .69m x .91m	195lb / 89kg

- Each SUBSALVE USA lift bag is tested prior to shipping.
- Custom sizes available.
- All Subsvalve USA products are compliant with IMCA D-016-AIRBAGS, ABS, U.S. Department of Defense Standards.



Two 3ft chains with carabiners are rigged to lift rings placed 40in apart on the bottom of each bag. They allow for quick and easy attachment to the front and rear bumpers or shock brackets of most vehicles. Bags can also be rigged to cradle the car by connecting the chains together underneath the vehicle.



VEHICLE RECOVERY SYSTEMS

VRS-2000/VRS-4000/VRS-4000-HELO

The SUBSALVE USA VRS-2000 and VRS-4000 are the only self-contained patented systems available today. We have been refining every aspect of the system for over twenty years, incorporating input from the commercial and public safety diving communities as well as experience with actual recoveries. This all-purpose system is portable for rapid deployment. Equipped with all necessary hardware – ready for immediate use.

Fabric

- Urethane-coated nylon—high-strength and heavy-duty
- Superior abrasion resistance
- Resistant to most petro-chemicals
- UV-resistant
- Low maintenance requirements and easy to clean
- RF welded seams

Used by 250 domestic and fifty worldwide public safety dive teams

VRS-2000 for automobiles and other small vehicles

VRS-4000 for trucks, buses and larger vehicles

VRS-4000-HELO emergency flotation to prevent sinking if an aircraft is ditched (NATO approved)

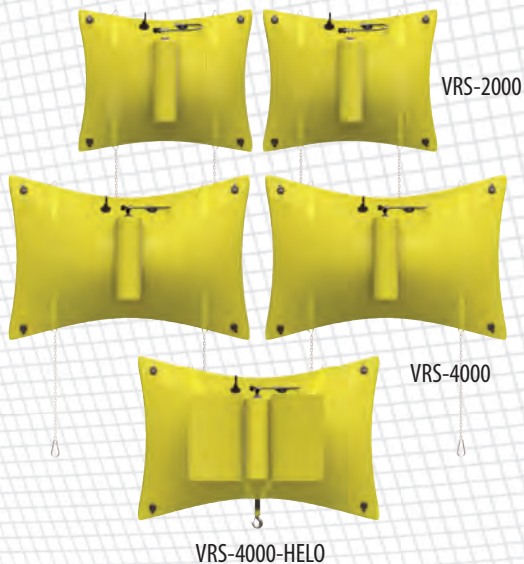
System Components

VRS-2000 & VRS-4000

- Two 2000lb or two 4000lb enclosed flotation bags each with a pocket for an 80ft³ aluminum SCUBA cylinder.
- The air cylinder connects to the lift bag with a SCUBA yoke and hose assembly with a one way check valve for easy tank changes while preventing any loss of air from the bag.
- Two stainless steel lift rings on top and two on the bottom of bag that allow the lift bag to be rigged either flat or upright.
- (2) Bottom lift rings are each equipped with a 3' length of 1/4" galvanized proof coil chain and a stainless steel snap carabiner on the end.

VRS-4000-HELO

- For rapid deployment to prevent aircraft from sinking if ditched
- One 4000lb enclosed flotation bag with a pocket for an 80ft³ aluminum scuba cylinder, a single pick point with stainless steel snap hook, and flaps to enclose the entire system.
- The air cylinder connects to the lift bag with a SCUBA yoke and hose assembly with a one way check valve for easy tank changes while preventing any loss of air from the bag.
- NATO approved



Also available:

An optional two-valve station stainless steel manifold assembly with quick disconnects, shut-offs, and two 50ft hose assemblies for remote or controlled inflation. SUBSALVE VRS-2000 sales and instructional video, 18 min. DVD. U.S. Patent No. 5,755,172

Model	Lift Capacity (total)	Height	Length	Packaged Cubic Dimension	Weight
VRS-2000	4400lb / 2000kg	55in / 1.41m	60in / 1.54m	24in x 24in x 20in / .61m x .61m x .51m	60lb / 27kg
VRS-4000	8800lb / 4000kg	69in / 1.77m	75in / 1.92m	24in x 24in x 30in / .61m x .61m x .76m	100lb / 45kg
VRS-4000-HELO	4400lb / 2000kg	69in / 1.77m	75in / 1.92m	24in x 24in x 18in / .61m x .61m x .46m	55lb / 25kg

- Each SUBSALVE USA lift bag is tested prior to shipping.
- Custom sizes available.
- All Subsalve USA products are compliant with IMCA D-016-AIRBAGS, ABS, U.S. Department of Defense Standards.

SUBSALVE USA Corporation, P.O. Box 2030, North Kingstown, RI 02852 USA
P: 401.884.8801 • TF: 800.466.6962 • F: 401.884.8868 • www.subsalve.com • richard@subsalve.com



QUAD BAGS

Tech divers, wreck divers and public safety divers use this multi-purpose bag as:

- A lift bag to recover objects.
- An up-line float.
- A decompression-line float.
- A dry bag.
- An inflatable dive flag/float to warn off boaters.

Quad bags are ready to go

- Manufactured of high-strength, lightweight, vinyl coated nylon fabric.
- Can be rolled up small enough to carry on every dive.
- Screened on both sides with a bright red "divers down" flag for high visibility
- Equipped with an oral inflation and an optional lanyard operated dump valve.
- Equipped with
 - Velcro tie strap
 - Bottom waterproof closure
 - Stainless steel snap
 - Oral inflation
 - Equipped with all necessary hardware ready for immediate use.
 - U.S. Patent No. D-362,817



Model	Lift Capacity	Width	Overall Height	Packaged Cubic Dimension	Weight
QB-50	55lb / 25kg	14in / 0.36m	30in / 0.77m	15in x 10in x 2in / .38m x .26m x .05m	1.0lb / 0.45kg
QB-100	105lb / 47kg	28in / 0.72m	30in / 0.77m	15in x 10in x 2in / .38m x .26m x .05m	1.5lb / 0.68kg
QB-200	205lb / 93kg	40in / 1.02m	36in / 0.92m	15in x 10in x 3in / .38m x .26m x .08m	2.5lb / 1.13kg



RAPID RECOVERY SYSTEM

The Rapid Recovery System is a self-contained system including an enclosed commercial or professional lift bag with a pocket to hold the necessary air cylinder to fully inflate the lift bag at 100ft of depth.

RRS Includes:

- Tank pocket
- Inflation yoke with check valve and hose
- Velcro valise to contain the bag
- Optional remote actuation valve
- Air cylinder optional—not included



Optional Actuation Valve



Model	Lift Capacity	Width	Overall Height	Packaged Cubic Dimension	Weight
RRS-100	120lb / 55kg	16in / 0.41m	30in / 0.77m	14in x 10in x 6in / .36m x .26m x .15m	5lb / 2.27kg
RRS-200	220lb / 100kg	22in / 0.56m	36in / 0.92m	15in x 11in x 7in / .38m x .28m x .18m	7lb / 3.18kg
RRS-500	550lb / 250kg	29in / 0.74m	43in / 1.07m	15in x 11in x 7in / .38m x .28m x .18m	12lb / 5.45kg
RRS-1000	1100lb / 500kg	35in / 0.90m	56in / 1.44m	18in x 13in x 10in / .46m x .33m x .26m	17lb / 7.7kg
RRS-2000	2200lb / 1000kg	44in / 1.13m	63in / 1.62m	20in x 15in x 9.5in / .51m x .38m x .29m	30lb / 13.6kg

- Each SUBSALVE USA lift bag is tested prior to shipping.
- Custom sizes available.
- All Subsalve USA products are compliant with IMCA D-016-AIRBAGS, ABS, U.S. Department of Defense Standards.



CABLE FLOAT/PIPELINE FLOATS

Cable/Pipeline Float - Salvage Float Balloon

- Includes 3 stainless steel lift rings and inflation port.
- Used for light salvage as well as cable flotation and suspension
- Part No. SFB-300 - Manufactured to US Military specification NSN 2050-00-574-7963 and in accordance to dwg. No. 4563094.



Model	Lift Capacity	Inflated Diameter	Packaged Cubic Dimension	Weight
SFB-100	110lb / 50kg	22in / 0.56m	15in x 11in x 7in / .38m x .28m x .18m	6lb / 2.7kg
SFB-200	220lb / 100kg	27in / 0.69m	15in x 11in x 7in / .38m x .28m x .18m	8lb / 3.6kg
SFB-300	330lb / 150kg	30in / 0.76m	18in x 13in x 10in / .46m x .33m x .25m	10lb / 4.5kg
SFB-500	550lb / 250kg	34in / 0.86m	24in x 18in x 10in / .61m x .46m x .25m	12lb / 5.4kg



PROPELLER BAGS

Prop bag

- Specially designed lift bags used to remove and install boat propellers.
- Available in three standard sizes (100lb, 200lb, 300lb), custom sizes available.
- Each lift bag has 4 lift points and one dump valve with lanyard for manual operation.



Model	Lift Capacity	Length	Width	Height	Packaged Cubic Dimension	Weight
PB-100	110lb 50kg	28in .71m	9in .23m	14in .36m	15in x 11in x 7in .38m x .28m x .18m	6lb 2.7kg
PB-200	220lb 100kg	36in .91m	12in .31m	18in .46m	18in x 13in x 10in .46m x .33m x .25m	8lb 3.6kg
PB-300	330lb 150kg	48in 1.22m	16in .41m	24in .61m	24in x 18in x 10in .61m x .46m x .25m	10lb 4.5kg

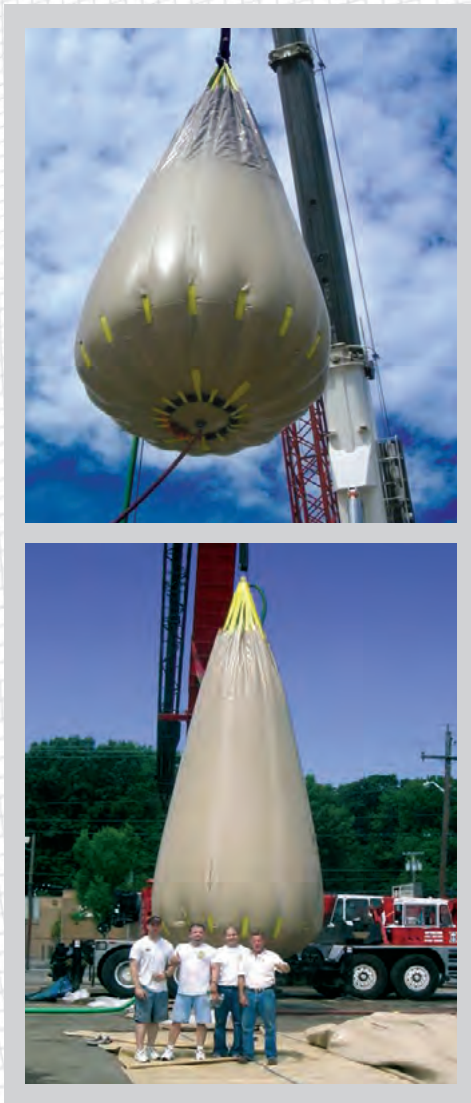


BRS-100

- Specially designed for use by law enforcement to recover or remove explosives or other dangerous devices.
- The Bomb Recovery System 100 includes the following.
 - One 25lb float
 - One 50lb float
 - One 100lb float
- Each float includes one 2.5psi pressure relief valve and a 1/4in quick disconnect for inflation.
- 100ft LP inflation hose with quick disconnects
- 105ft high strength polypro line with carabiner
- Carry bag



- Each SUBSALVE USA lift bag is tested prior to shipping.
- Custom sizes available.
- All Subsalve USA products are compliant with IMCA D-016-AIRBAGS, ABS, U.S. Department of Defense Standards.



WATER LOAD TEST BAG

Innovative Design

- SUBSALVE USA's Water Load Test Bags are constructed using the same technology used in our world class lift bags. These bags makes it easier to load test structures due to their very low handling weight and make it possible to test in areas with insufficient access for conventional solid weights.
- Equipped with all the necessary hardware and ready for immediate use.

Fabric

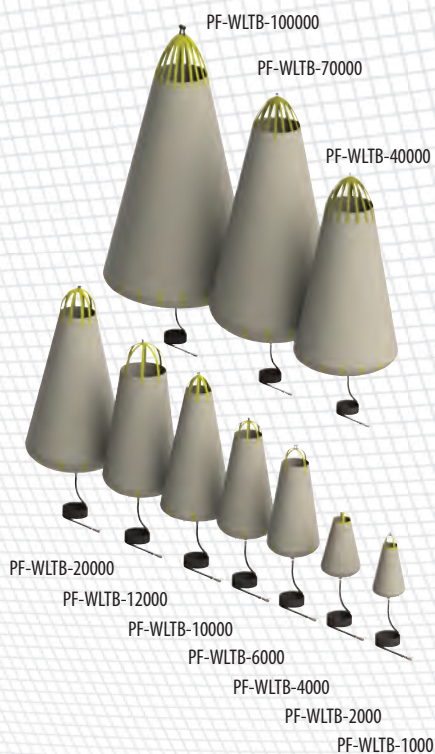
- Urethane-coated nylon—high-strength and heavy-duty
- Superior abrasion resistance
- Resistant to most petro-chemicals
- UV-resistant
- Low maintenance requirements and easy to clean
- RF welded seams

Easy to use

- PF-WLTB-1000 – PF-WLTB-6000
1 1/4 in NPT port accepts a 1 1/4 in discharge hose for fast deflation.
- PF-WLTB-10000 – PF-WLTB-20000
2in NPT stainless steel flange accepts a 2in discharge hose for fast deflation.
- PF-WLTB-40000 – PF-WLTB-70000
3in NPT stainless steel flange accepts a 3in discharge hose for fast deflation of the larger water weight test bags.
- PF-WLTB-100000
4in NPT stainless steel flange accepts a 4in discharge hose for fast deflation of the larger water weight test bags.

Lift Straps

- Below PF-WLTB-4000
– Multiple nylon lift straps sewn directly to bottom of lift bag, which bears load and provides safe working ratio of 6:1.
- PF-WLTB-4000 and above
– Designed with a replaceable heavy-duty nylon webbing lift harness fabricated into the skin of the bag, which bears the load and provides a safe working ratio of 6:1.

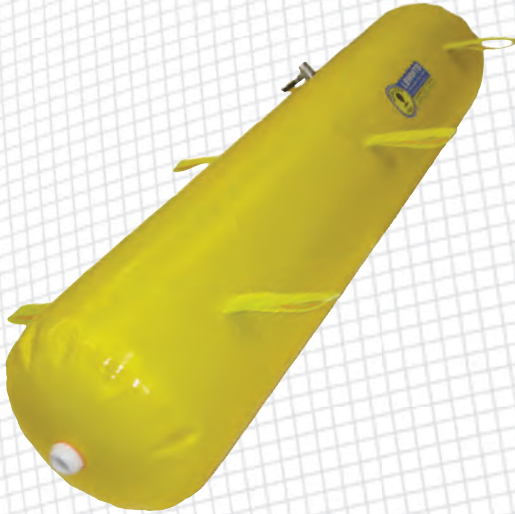


Model	Lift Capacity	Diameter	Overall Height	Packaged Cubic Dimension	Weight
PF-WLTB-1000	1100lb / 500kg	35in / 0.90m	56in / 1.44m	18in x 13in x 10in / .46m x .33m x .26m	17lb / 7.7kg
PF-WLTB-2000	2200lb / 1000kg	48in / 1.22m	59in / 1.50m	20in x 15in x 9.5in / .51m x .38m x .29m	30lb / 13.6kg
PF-WLTB-4000	4400lb / 2000kg	54in / 1.38m	94in / 2.41m	24in x 24in x 24in / .61m x .61m x .61m	50lb / 22.7kg
PF-WLTB-6000	6600lb / 3000kg	61in / 1.56m	108in / 2.77m	41in x 41in x 8in / 1.04m x 1.04m x .21m	80lb / 36.3kg
PF-WLTB-10000	11000lb / 5000kg	72in / 1.83m	120in / 3.05m	41in x 41in x 8in / 1.04m x 1.04m x .25m	105lb / 47kg
PF-WLTB-12000	13200lb / 6000kg	80in / 1.79m	130in / 3.33m	41in x 41in x 12in / 1.04m x 1.04m x .31m	125lb / 56.7kg
PF-WLTB-20000	22000lb / 10000kg	93in / 2.38m	146in / 4.10m	41in x 48in x 18in / 1.04m x 1.23m x .46m	190lb / 86.2kg
PF-WLTB-40000	44000lb / 20000kg	120in / 3.07m	201in / 6.16m	41in x 48in x 24in / 1.04m x 1.23m x .62m	325lb / 147.7kg
PF-WLTB-70000	77000lb / 35000kg	144in / 3.69m	258in / 6.77m	41in x 48in x 38in / 1.04m x 1.23m x .97m	410lb / 186.9kg
PF-WLTB-100000	110000lb / 50000kg	166in / 4.22m	316in / 8.03m	40in x 50in x 54in / 1.02m x 1.27m x 1.37m	525lb / 238kg

- Each SUBSALVE USA lift bag is tested prior to shipping.
- Custom sizes available.
- All Subsalve USA products are compliant with IMCA D-016-AIRBAGS, ABS, U.S. Department of Defense Standards.



LIFEBOAT DAVIT TEST BAGS/KIT



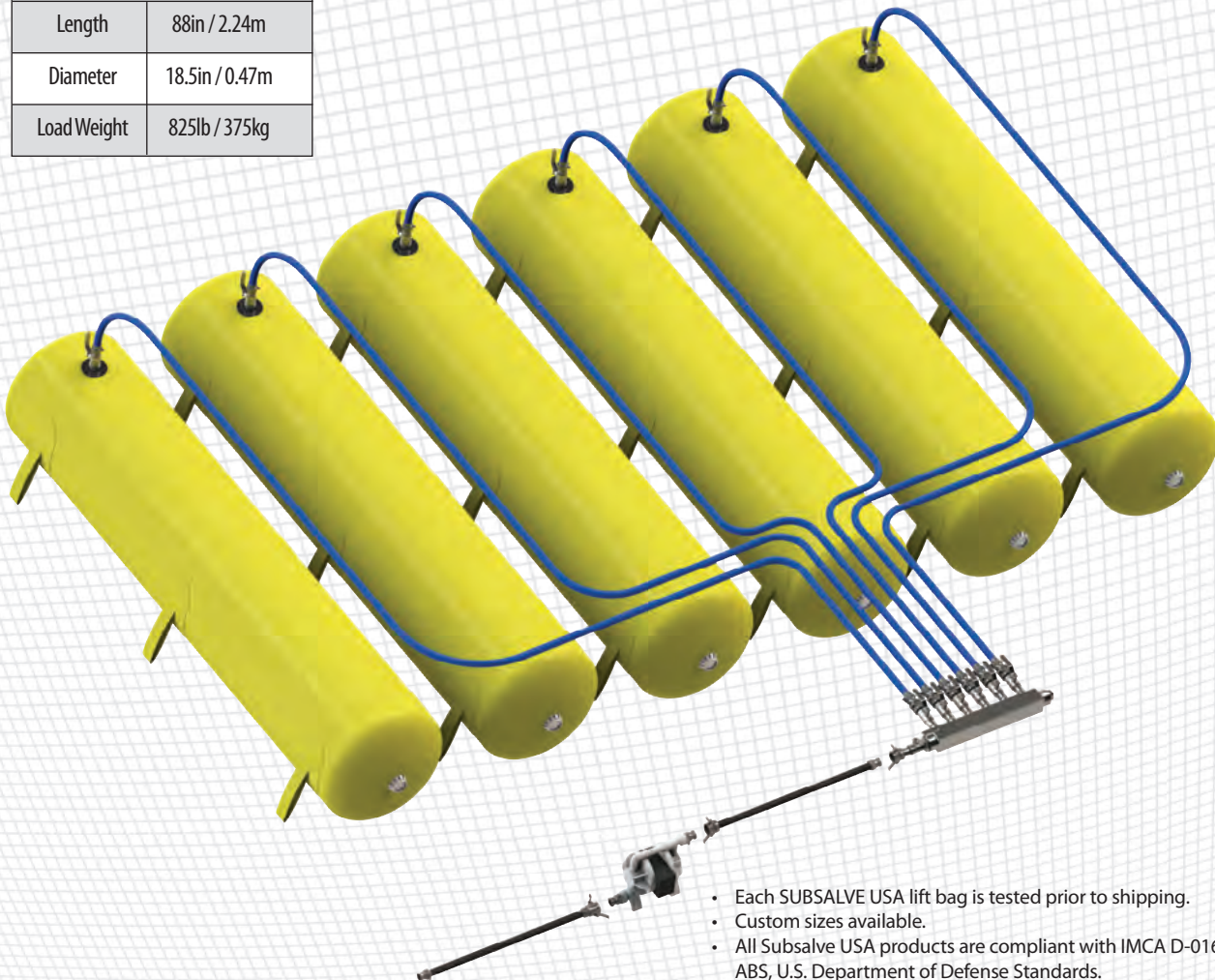
The Subsalve USA lifeboat davit testing system allows for lifeboat davits and other structures to be load tested in areas with insufficient access for conventional solid weights. The handling weight of water filled test bags compared to solid weights is substantially reduced increasing ease of use.

To use the system simply place the empty bag in the desired location, fill with water, execute the load test and discharge the water from the bag.

Components

- Desired number of 375KG capacity test bags (6 handling straps per bag)
- 3/4" x 50ft Inflation & discharge hoses with quick couplers fittings
- 6 station manifold with 3/4" quick couplers
- Air driven double diaphragm pump rated to 15 GPM.
- 25ft Inflation & discharge hoses

General Dimensions	
Length	88in / 2.24m
Diameter	18.5in / 0.47m
Load Weight	825lb / 375kg



- Each SUBSALVE USA lift bag is tested prior to shipping.
- Custom sizes available.
- All Subsalve USA products are compliant with IMCA D-016-AIRBAGS, ABS, U.S. Department of Defense Standards.



FEND-AIR® INFLATABLE MARINE FENDERS

Stock# Fenders	Size
FA-1224	12in x 24in / 30cm x 61cm
FA-1236	12in x 36in / 30cm x 91cm
FA-1248	12in x 48in / 30cm x 122cm
FA-1260	12in x 60in / 30cm x 152cm
FA-1272	12in x 72in / 30cm x 183cm
FA-1296	12in x 96in / 30cm x 244cm
FA-12120	12in x 120in / 30cm x 305cm
FA-1824	18in x 24in / 46cm x 61cm
FA-1836	18in x 36in / 46cm x 91cm
FA-1848	18in x 48in / 46cm x 122cm
FA-1860	18in x 60in / 46cm x 152cm
FA-1872	18in x 72in / 46cm x 183cm
FA-1896	18in x 96in / 46cm x 244cm
FA-18120	18in x 120in / 46cm x 305cm
FA-2424	24in x 24in / 61cm x 61cm
FA-2436	24in x 36in / 61cm x 91cm
FA-2448	24in x 48in / 61cm x 122cm
FA-2460	24in x 60in / 61cm x 152cm
FA-2472	24in x 72in / 61cm x 183cm
FA-2496	24in x 96in / 61cm x 244cm
FA-24120	24in x 120in / 61cm x 305cm
FA-3636	36in x 36in / 91cm x 91cm
FA-3648	36in x 48in / 91cm x 122cm
FA-3672	36in x 72in / 91cm x 183cm
FA-3684	36in x 84in / 91cm x 213cm
FA-36120	36in x 120in / 91cm x 305cm
FA-36168	36in x 168in / 91cm x 427cm
FA-4860	48in x 60in / 122cm x 152cm
FA-4872	48in x 72in / 122cm x 183cm
FA-4884	48in x 84in / 122cm x 213cm
FA-48120	48in x 120in / 122cm x 305cm
FA-48240	48in x 240in / 122cm x 610cm



Made to the highest yacht quality to provide maximum protection to your vessel while at a floating or stationary dock or while rafted. For use on vessels of all sizes including recreation, commercial and military. Manufactured of heavy-duty urethane and vinyl coated nylon fabric for high strength puncture and abrasion resistance and resistance to petro-chemicals. Stainless steel rings on each end allows FEND-AIR fenders to be rigged horizontally or vertically. High quality inflatable boat valve for convenient inflation or deflation for storage. Light weight and easy to deploy.

FEND-AIR fenders are available in black, white and navy blue. Custom colors and sizes available.

FEND-AIR fender covers are available in Polartec fleece.

ACCESSORIES



120V High
Volume Pump



Turbo
Foot Pump



12V High Volume
Pump



Dock fendering System
Straps and Bracket Kit

- Each SUBSALVE USA lift bag is tested prior to shipping.
- Custom sizes available.
- All Subsalve USA products are compliant with IMCA D-016-AIRBAGS, ABS, U.S. Department of Defense Standards.



AIRCRAFT LIFT BAG

The Aircraft Lifting Bag is used to lift crippled aircraft from runways or terrain where it is impractical or impossible to use standard aircraft jacks. SUBSALVE USA is currently manufacturing these airlifting pneumatic bags for the U.S. Air Force, as well as many other foreign air forces throughout the world (NSN # 173-00-263-2962).

Constructed of the same urethane-coated nylon as our underwater lift bags, these lift bags are highly resistant to extreme atmospheric temperature, abrasion and petrochemicals.

Equipped with all necessary hardware - ready for immediate use

Each SUBSALVE USA lift bag is tested prior to shipping.

Accessories:

- 3/4in diameter 50ft inflation hose
- Ground cover

Model	Lift Capacity	Inflated Dimension	Weight
ACLB-12-3C	12 tonne / 12,000kg	90in x 78in x 72in / 2.29m x 1.98m x 1.83m	185lb / 84kg
ACLB-20-3C	20 tonne / 20,000kg	130in x 112in x 104in / 3.30m x 2.86m x 2.65m	400lb / 181kg
ACLB-40-3C	40 tonne / 40,000kg	165in x 142in x 132in / 4.19m x 3.61m x 3.36m	600lb / 272kg

ACLB-40-3C



ACLB-20-3C



ACLB-12-3C



- Each SUBSALVE USA lift bag is tested prior to shipping.
- Custom sizes available.
- All Subsvalve USA products are compliant with IMCA D-016-AIRBAGS, ABS, U.S. Department of Defense Standards.



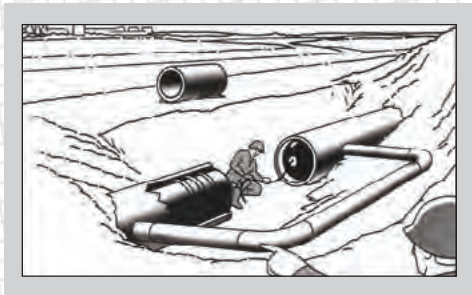
PIPE PLUGGERS



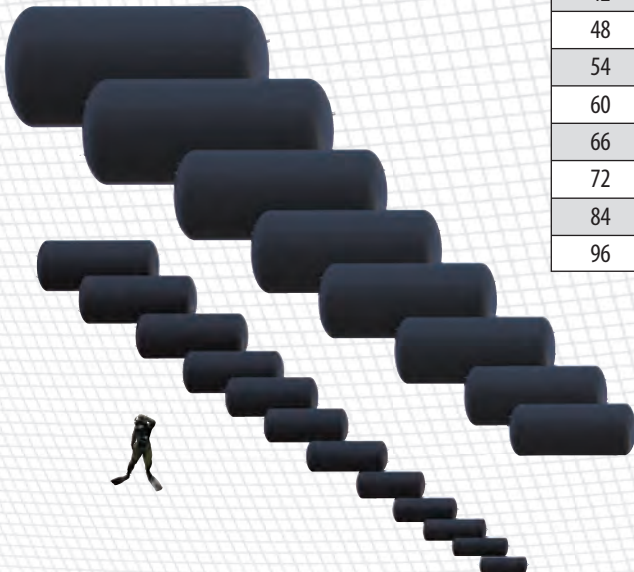
PIPE PLUGGERS

Nothing temporarily closes a cavity or seals an opening better than an inflatable plug. PIPE PLUGGERS are heavy

duty, inflatable pipe plugs especially designed for use during the construction, maintenance, and repair of pipeline, ducts, and tunnels. PIPE PLUGGERS are constructed of high tenacity, urethane coated nylon fabric for high strength of over 1000lbs. per inch, and the urethane coating is resistant to fuel and most other petro-chemicals. Each PIPE PLUGGER is equipped with rigging hardware, 1/4" to 3/4" inflation ports, and pressure relief valves to prevent blow ups. PIPE PLUGGERS are also available with a by-pass design. Stock sizes are available from 12" to 96" diameter. Custom sizes, shapes, and configurations can be designed and manufactured to meet special needs.



Pipe Dia.	Max. Press.	Max. Head	Thrust at Maximum Head		Volume	Disp.	Length	Weight	Valve
in	psig	ft	psi	tons	ft ³	lb	in	lb	in
12	23	52	22	1.3	2.22	138	32	12	Stem
14	23	52	22	1.9	3.9	243	40	15	0.75
16	23	52	22	2.3	5.24	327	44	20	0.75
18	23	52	22	2.9	6.18	386	46	25	0.75
20	22	50	21	3.5	8.2	512	49	28	0.75
22	22	50	21	4	9.9	624	58	33	0.75
24	20	45	19	4.5	13.6	848	60	40	0.75
28	19	43	18	5	18.92	1179	66	44	0.75
30	17	39	17	6	25.42	1584	72	50	0.75
32	16	35	15.2	6.5	30.5	1915	80	55	0.75
34	15	34	14.5	7	31.42	1980	84	57	0.75
36	15	34	14.5	7.5	35.37	2208	87	65	0.75
42	13	30	13	9	65.87	4105	101	96	0.75
48	11	25	11	10	96.48	6021	114	140	0.75
54	9	210	9	10.5	135.42	8448	128	160	0.75
60	8	19	8.5	12	192.08	11987	142	190	0.75
66	7	16	7	12.3	253.66	15850	152	255	0.75
72	6	14	6.2	13	338.8	20085	170	270	0.75
84	6	14	6.2	17	555.1	34500	200	280	0.75
96	5	12	5	20	796.25	49650	210	378	0.75



- Each SUBSALVE USA lift bag is tested prior to shipping.
- Custom sizes available.
- All Subsalve USA products are compliant with IMCA D-016-AIRBAGS, ABS, U.S. Department of Defense Standards.



INFLAT-A-TANK

INFLAT-A-TANK manufactures rugged, flexible storage containers for water, fuel, sanitary discharge, and other liquids. Every tank is manufactured of heavy duty urethane coated nylon fabric. The nylon fabric has a breaking strength of over 1000 lbs. per inch, and the urethane coating is resistant to fuels and most petro-chemicals. Each tank is equipped with inlet and discharge ports and are available with optional vents and tie downs. Stock sizes are available for boats, campers, mobile homes, and industrial applications. Tanks are affordable, easy to install, and require minimal maintenance.



Water, Oil and Fuel Storage Tanks									
Model Number	Capacity		Dimensions empty (±6in)		Dimensions Filled (±6in)			Approx. Weight (lbs)	Ship Weight (lbs)
	(Gallons)	(Liters)	Width	Length	Width	Length	Height		
IFT-250	250	946	6'8"	6'8"	6'2"	6'2"	1'	25	55
IFT-500	500	1893	6'8"	9'9"	5'11"	9'	1'6"	32	62
IFT-900	900	3407	9'	10'2"	8'	9'2"	2'	41	75
IFT-1000	1000	3786	9'	11'2"	6'8"	8'	10'1"	44	78
IFT-1200	1200	4543	11'2"	10'	10'1"	8'11"	2'2"	49	83
IFT-1500	1500	5678	11'2"	11'2"	9'11"	9'11"	2'6"	54	97
IFT-2000	2000	7571	12'4"	12'4"	11'	11'	2'8"	63	102
IFT-2500	2500	9464	13'6"	13'6"	12'2"	12'2"	2'8"	74	123
IFT-3000	3000	11356	13'6"	15'	12'	15'6"	3'	87	141
IFT-3500	3500	13249	13'6"	17'	12'	15'6"	3'	91	145
IFT-5000	5000	18927	16'10"	16'8"	15'	14'10"	3'8"	110	170
IFT-6000	6000	22713	18'	17'6"	16'	15'6"	4'	122	180
IFT-10000	10000	37854	21'4"	22'4"	19'4"	20'4"	4'	180	258
IFT-15000	15000	56781	27'	25'1"	25'	23'1"	4'	252	333
IFT-20000	20000	75708	24'	29'	22'	27'	5'8"	325	410
IFT-25000	25000	94635	24'	36'	23'	35'	5'8"	440	528
IFT-50000	50000	189271	23'11"	65'	22'9"	63'9"	5'8"	780	820
IFT-100000	100000	378541	61'3"	61'9"	59'3"	59'9"	4'	1519	1668

- Each SUBSALVE USA lift bag is tested prior to shipping.
- Custom sizes available.
- All Subsalue USA products are compliant with IMCA D-016-AIRBAGS, ABS, U.S. Department of Defense Standards.



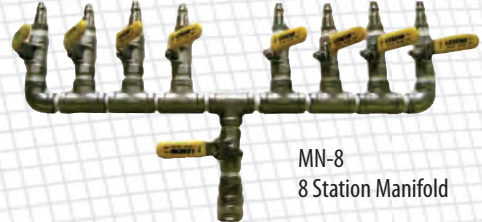
ACCESSORIES



MN-2
2 Station Manifold



MN-4
4 Station Manifold



MN-8
8 Station Manifold



IHA-Inflation Hose Assembly
(3/8" x 50' w/ SS Quick Disconnects)



IYA-Inflation Yoke Assembly



Integrated Inflation System:
• (1) IYA
• (1) MN-2
• (2) IHA



SSBV-Stainless Steel
Ball Valve:
• 1/4" NPT
• 3/4" NPT
• 1 1/4" NPT



SSQD-Stainless Steel Quick Disconnect



3/4" Cam-Lock Coupler



Shackle: 5/8" to 2"



PDV-Plunger Dump Valve



PRV-L
Pressure Relief Valve



PRV-F
Pressure Relief Valve



PRV-S-HV
Pressure Relief Valve



PRV-S
Pressure Relief Valve



Minor Repair Kit (Part # RK)



Major Repair Kit (Part # MJRK)

- Each SUBSALVE USA lift bag is tested prior to shipping.
- Custom sizes available.
- All Subsvalve USA products are compliant with IMCA D-016-AIRBAGS, ABS, U.S. Department of Defense Standards.



- FS10-Flex Straps 3" x 10':
- The SUBSALVE Flex strap is 3" by 10' heavy nylon lift strap with 6 lift eyes per strap
 - 6000lb Safe working load per eye
 - 2 straps per set



CLIENTS

GOVERNMENT CLIENTS

Argentinean Navy
Australian Navy
Austrian Navy
Bureau of Alcohol, Tobacco & Firearms
Canadian Coast Guard
Canadian Force Army Dive Centre
Canadian Navy
Chilean Navy
Connecticut State Police
Danish Defence
E.P.A.
Ecuadorian Navy
Estonian Navy
F.B.I.
Finnish Navy
German Navy
Greek Air Force
Indian Navy
Israeli Navy
Italian Navy
Japanese Defense Agency
Joint POW/MIA Command
Kentucky State Police
Korean Maritime Police
Maine State Police
Mexican Navy
Michigan State Police
Moscow Airport
N.A.S.A.
N.O.A.A.
National Marine Fisheries
National Park Service
Naval Undersea Warfare Center
New York State Police
New Zealand Navy
Norwegian Navy
NSPA NATO
Panamanian Navy
Peruvian Navy
Portuguese Navy
Romanian Navy
Royal Canadian Mounted Police
Royal Thai Navy
Saudi Arabian Government
Saudi Navy
Singapore Navy
South Carolina Law Enforcement
South Korean Navy
Spanish Navy
State of Qatar
Swiss Military
Tawain Navy
Tennessee Valley Authority
Turkish Air Force

Turkish Air Logistic Command
U.A.E. Government
US Air Force
US Army
US Army Corps of Engineers
US Border Patrol
US Coast Guard
US Department of Interior
US Geological Survey
US Navy

INSTITUTIONAL CLIENTS

Audubon Society
Brigham Young University
Broward College
Canadian Forces School of Military Engineering
College of Oceaneering
Florida Institute of Technology
Florida State University
Indiana University
Institute of Nautical Archeology
Louisiana Technical College
National Polytechnic College of Engineering
& Oceaneering
Oregon State University
Pennsylvania State University
Scripps Institute of Oceanography
Texas A&M
University of Alaska
University of Azores
University of Bremen
University of California
University of New Hampshire
University of North Carolina
University of Wisconsin
US Merchant Marine Academy
US Navy EOD Training School
Webb Institute
Woods Hole Oceanographic Institution

COMMERCIAL CLIENTS

Aceryg US, Inc.
ADS Inc.
American Diving Supply
Amron International, Inc.
Aqua Air Industries, Inc.
Aqua Lung
Aquatica
Arco
Atlantis Submarines
Bauer Compressors, Inc.
Beauchat International
Bisso Marine Co., Inc.
Blue Ocean Tackle, Inc.
Cal Dive International
Casco Antiguo
CBS Entertainment - CSI Miami
Chaxton
Chevron
Cold Water Divers Inc.
Con Edison
Conrad Industries, Inc.
Deca Diving Equipment of America

Deutsche Unterwasser
Discovery Channel
Disney Cruise Lines
Dive Commercial International, Inc.
Dive Rescue International
Divers Supply, Inc.
Divex
Duke Energy
Exxon
Geico Insurance
General Dynamics
General Motors
Global Diving & Salvage, Inc.
GPC
Halliburton Subsea
High-Tech Diving & Safety, Inc.
Interspiro
Jack Vilas & Associates, Inc.
James Cameron
Kirby Morgan Dive Systems, Inc.
Lifeguard Systems, Inc.
Lockheed Martin
Lufesa Divers
Mainstream Commercial Divers, Inc.
Matjack
McCallister Towing
McDermott Caspian Contractors, Inc.
Metro Goldwyn Mayer
Modern Continental Construction
Monterey Bay Aquarium
Moran Towing
Myto S.R.L.
Nippon Kaiyo Co., Ltd.
Northrop Grumman
Oceaneering International, Inc.
Oracle Team USA
Pacific Commercial Diving Supply
Phoenix International
Resolve Marine Group, Inc.
Rovsco, Inc.
SAIC
Sea Tow International
Submarine Manufacturing & Products LTD
Subsea 7
Swiber Offshore
Synergy Diving & Equipment
Technip
The Ocean Corporation
Titan Maritime, LLC
Tow Boat US
Trim Systems
Trinity Yachts, LLC
Underwater Construction Corporation
United Space Alliance
United Technologies
Universal Studios
Vessel Assist
Vetter GMBH
Warner Brothers



PHOTO GALLERY



Draft reduction for newly constructed tugboat launching using Salvage Pontoons 40,000 lbs. and Salvage Pontoons 70,000 lbs.



Custom Vertical Pontoons manufactured to allow accurate horizontal control during large pipe and valve maintenance and assembly.



Professional 4,000 lbs. Lift Bags raising 5 ton marble column sections from a 200 BC Roman shipwreck off of Turkey.



Divers re-rigging Enclosed Flotation Bags 2,000 lbs. on James Cameron's Deepsea Challenger.



Enclosed Flotation Bags 6,000 lbs. used as pneumatic jacks/skids to remove and re-launch a grounded crewboat.



Raising Wayne Newton's yacht with Professional Lift Bags 12,000 lbs. and Enclosed Flotation Bags 6,000 lbs. Metropolitan Marine Solutions, Arizona, USA.



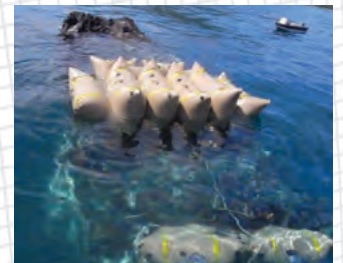
Lowering instrumentation using Enclosed Flotation Bags 500 lbs. and Enclosed Flotation Bags 6,000 lbs.



Salvage Pontoons 4,000 lbs. being used on an ocean wave energy system.



Fend Air Inflatable Marine Fenders on custom motor yacht.



Shallow water wreck removal using clusters of Enclosed Flotation Bags 2,000 lbs.



Roof load testing using Enclosed Water Load Test Bags.



Installation of oil pipeline in the Middle East using Salvage Pontoons 6,000 lbs.



Small aircraft salvage using Enclosed Flotation Bags 2,000 lbs.



Yacht salvage using Salvage Pontoons 2,000 lbs. and Salvage Pontoons 20,000 lbs. Photo credit: Vessel Assist - San Diego.



SUBSALVE USA

SUBSALVE USA is the world-leading innovator in buoyancy and engineered inflatables delivering the best products available all totally manufactured in the USA.

SUBSALVE USA has patented and trademarked designs, and is America's #1 manufacturer of standard and custom underwater flotation devices. SUBSALVE has created systems for every branch of the U.S. Military in addition to more than 30 foreign navies, militaries and governments.

SUBSALVE USA manufactures open bottom, enclosed and custom flotation devices. Standard bags are available in lift capacities from 25 to 100,000 lbs. as well as custom flotation devices and systems for special applications that exceed the capabilities of our standard products.

Each SUBSALVE USA product is tested prior to shipping, and must meet rigorous U.S. Department of Defense requirements and compliance with IMCA Standards.

Our other products and brands include:

MARK V/ORCA

VEHICLE RECOVERY SYSTEMS

WATER WEIGHT TEST BAGS

AIRCRAFT LIFTING BAGS

PIPE PLUGGERS®

INFLAT-A-TANK®

FEND AIR®

RAPID RECOVERY SYSTEMS

CABLE & PIPELINE FLOATS

PROPELLER BAGS

BOMB RECOVERY SYSTEMS

