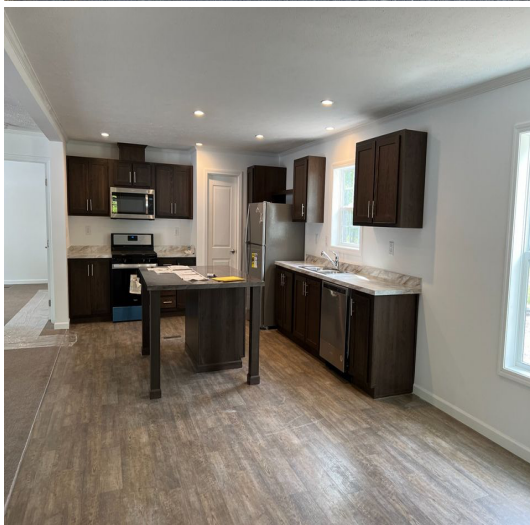


3 Beds 2 Baths House-Move in Condition

Priced at \$166,900



CALL FOR LOCATION

Property Details

3 beds · 2 baths, 1500 square feet

Description

New 2022 Champion Home. Home is a 3 Bedroom 2 Bath home. Home features full drywall interior walls, Huge Front entry deck, upgraded 40-gallon HWH, 200 Amp Circuit Breaker electrical service, Large Kitchen island with seating, all new Stainless Steel Appliances, Gas heating, Central Air Conditioning, R30 Insulated Roof, All LED lighting, Master bedroom Suite with its own walk in closet, double bowl vanity on 36" vanity, at one end of the home and then you have a full bathroom with 2 additional bedrooms. Large Living room. Off the dining room there is an oversized Trex Deck for all your outside entertaining needs. Front Paver Stone walkway to the front door and off-street parking. Monthly Lot Rent \$595 includes W/S/R/T/ Common Road Care.

HANDY MAN SPECIAL WITH LOTS OF POTENTIAL

PRICED AT \$150,000



CALL FOR LOCATION:

**3BR/1BATH 1,700 Ft² Single Family Home (1.5 Stories)
4 CAR DET. GARAGE ON 1 ACRE)**

1,700 Ft² Single Family Home (1.5 Stories) + Large 4 Car Detached Garage (700 Ft²) The 2 structures sit on a 1 ACRE Parcel sitting 1/2 a mile down a private dirt road in area of the Pocono Mountains. As you go down the dirt road you must cross a small bridge and brook until the property opens to a meadow area where there are only two private residences. The house itself has three large bedrooms and a full bathroom, large open kitchen & dining room area, separate living room which has a wood burning stove, stone basement, and large attic. The exterior of both structures has newer vinyl siding, the windows are newer, condition of the heater is unknown, the electric is currently off, house has well water, condition of septic is unknown. The house needs a renovation but there is a ton of potential, this is an extremely unique parcel and quite easy to fall in love with. The large garage has its own electric panel, it was used as an auto repair shop & has plenty of space for storage or workspace. The property is in an absolute gem of a location, property line butts right up to the lands owned by Mt. Airy Casino & Resort, down the road from the Frogtown Chop House, Camelback Ski Resort & Waterpark, Kalahari Waterpark & Resort, Great Wolf Lodge Resort, Route 611, State Game Lands, & East Stroudsburg. The title will be delivered to you clear. Looking to get a deal done as soon as possible! Give me a call or message to schedule an appointment to see it today. Let us get a deal done! - Lot Size: 225 X 193