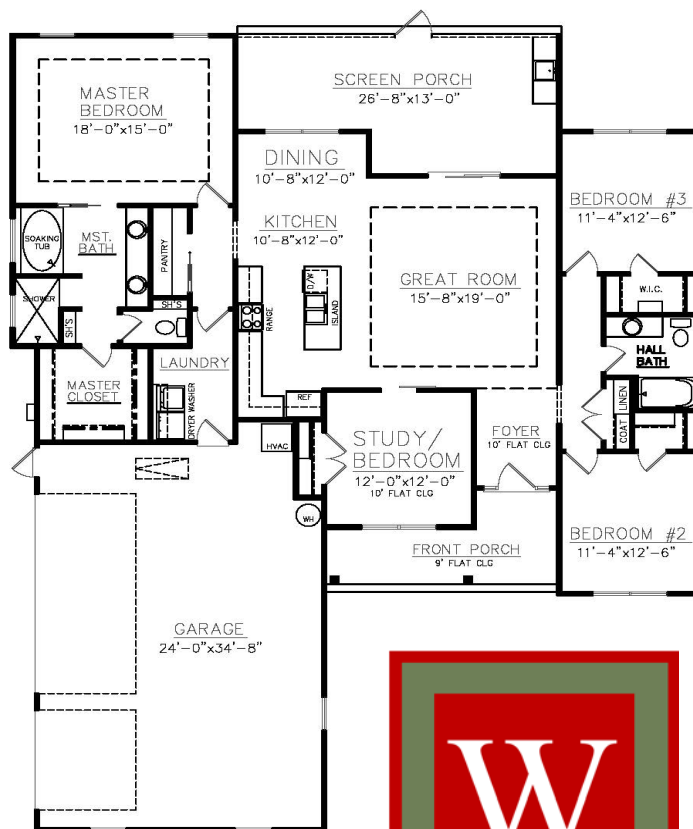




## THE 1977 PLAN

## OFFERED BY JOSSELYN HOMES SIGNATURE SERIES

- FOUR BEDROOM, TWO BATHROOM
- 1,989 SQFT, PER BUILDERS PLAN
- OPEN CONCEPT ISLAND KITCHEN
- SOLID SURFACE COUNTERTOPS THROUGHOUT
- PEX PLUMBING SYSTEM
- 9 FT+ CEILINGS & CROWN MOULDING
- CUSTOM CABINetry
- STAINLESS STEEL APPLIANCE PACKAGE
- SQFT & PLAN ELEVATIONS MAY VARY, PER BUILDERS PLANS



JOSSELYN  
HOMES

**W.E. Josselyn III**

C: 912.222.5595

Joss@JosselynHomes.com

P.O. Box 5793

St. Mary's, Georgia 31558

Owner is a licensed Realtor



We can build in your neighborhood or ours. Ask us about our many floor plans or visit [JosselynHomes.com](http://JosselynHomes.com) for more information.

Voted Camden County's Best Builder/Contractor for 2013 and 2014.