



## The 2141 Plan

JOSSELYN HOMES

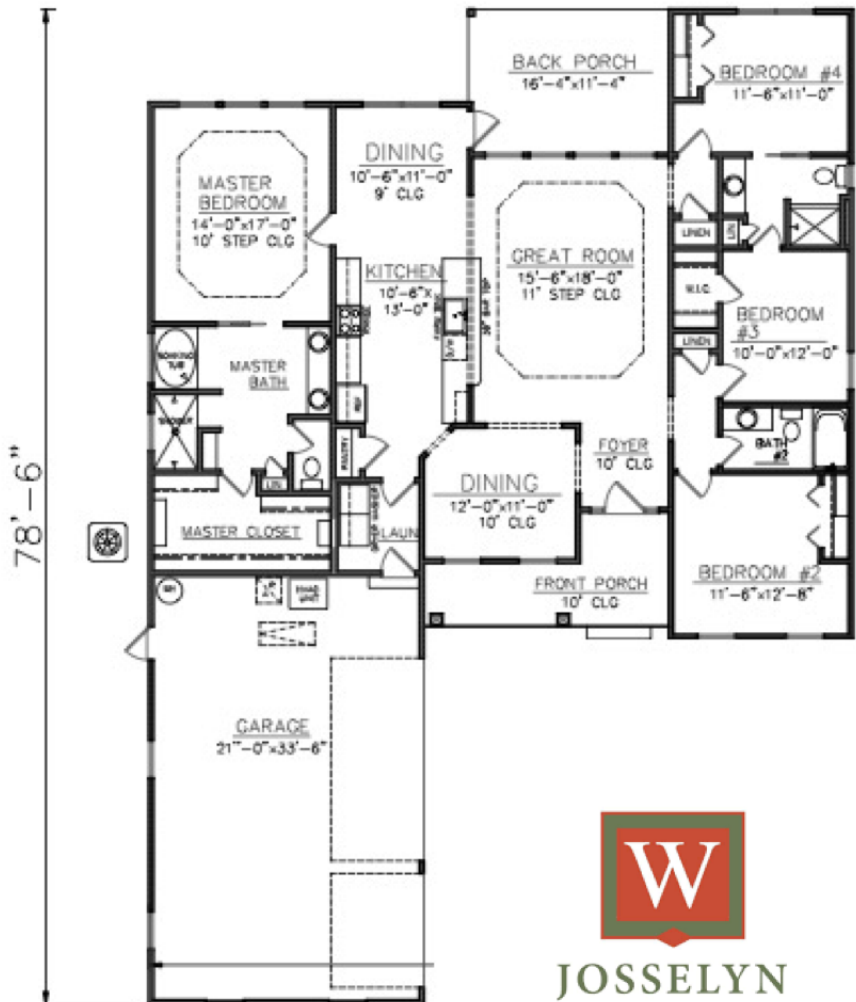
- FOUR BEDROOM, THREE BATHROOMS
- 2141 SQFT (PER BUILDERS PLANS)
- OPEN CONCEPT LIVING
- SOLID SURFACE COUNTERTOPS THROUGHOUT
- CROWN MOLDING
- 9FT CEILINGS
- CUSTOM CABINETRY W/ SOFT CLOSE H
- STAINLESS STEEL APPLIANCE PACKAGI
- EVP THROUGHOUT MAIN LIVING AREA, CARPET IN BEDROOMS
- MAINTENANCE FREE STUCCO OR LAP CONCRETE SIDING
- SELLER/BUILDER IS LICENSED REAL ES AGENT IN GA
- SQFT & ELEVATIONS MAY VARY, PER BUILDERS PLANS

Construction by Josselyn Homes, Inc.

**W.E. Josselyn III**  
C: 912.576.9424  
Joss@JosselynHomes.com

P.O. Box 5793  
St. Mary's, Georgia 31558

*Builder is Licensed Real Estate Agent in GA*



We can build in your neighborhood or ours. Ask us about our many floor plans or visit [JosselynHomes.com](http://JosselynHomes.com) for more information.

Voted Camden County's Best Builder/Contractor for 2013 and 2014.

