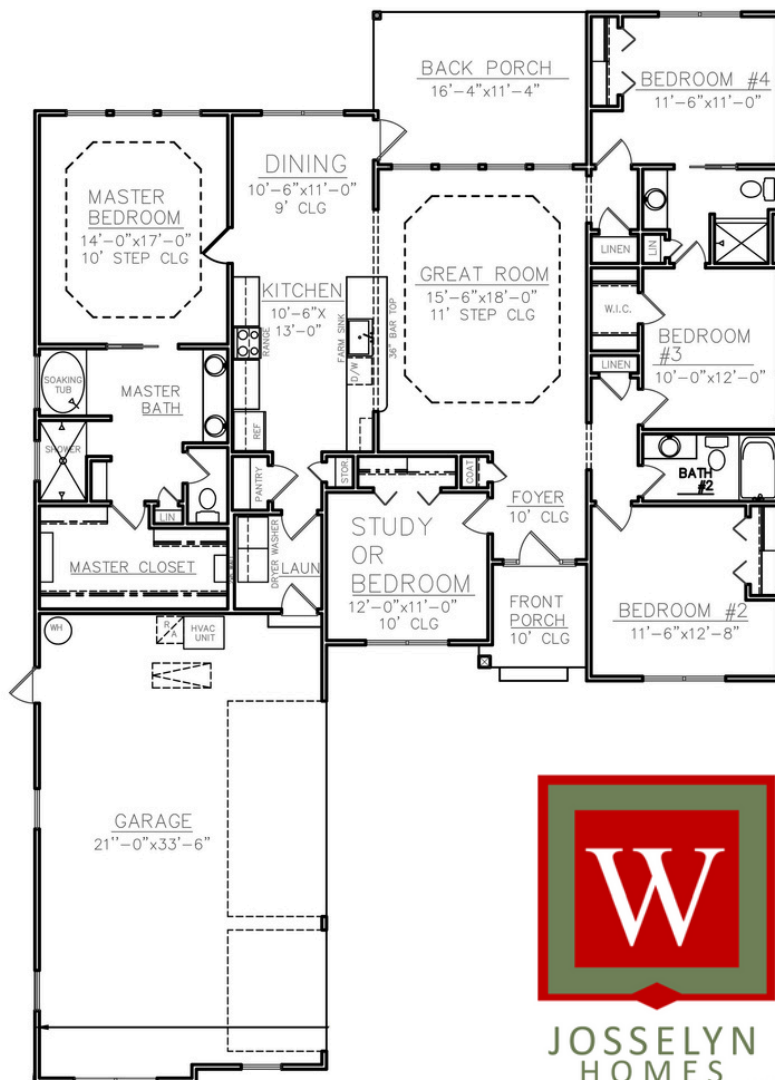




The 2192 Plan

JOSSELYN HOMES

- 5 BEDROOM, 3 BATHROOM
- 2192 SFT (PER BUILDERS PLANS)
- OPEN CONCEPT LIVING
- SOLID SURFACE COUNTERTOPS THROUGHOUT
- CROWN MOULDING
- 9FT CEILINGS
- CUSTOM CABINETRY W/ SOFTCLOSE HINGES
- STAINLESS STEEL APPLIANCE PACKAGE
- EVP THROUGHOUT MAIN LIVING AREA
- CARPET IN BEDROOMS
- BOARD & BATTEN SIDING



Construction by Josselyn Homes, Inc.

W.E. Josselyn III

C: 912.576.9424

Joss@JosselynHomes.com

P.O. Box 5793

St. Mary's, Georgia 31558

Builder is Licensed Real Estate Agent in GA



We can build in your neighborhood or ours. Ask us about our many floor plans or visit JosselynHomes.com for more information.

Voted Camden County's Best Builder/Contractor for 2013 and 2014.