



SHINING 3D®

# OPTIMSCAN-5 M HIGH END INDUSTRY INSPECTION





## MINIMIZE THE ERROR DIFFERENCE AND SAVE THE TIME TO THE UTMOST

This solution avoids manual error by carrying out CAD data inspection directly, which improves the inspection process efficiency.



## DRAMATIC PRODUCTION EFFICIENCY IMPROVEMENT

Professional inspection software could record all the steps and parameters. Batch inspection is as easy as single case inspection, because software could repeat the inspection procedure automatically. User can simply press one key to do one case or multi-case inspection job.



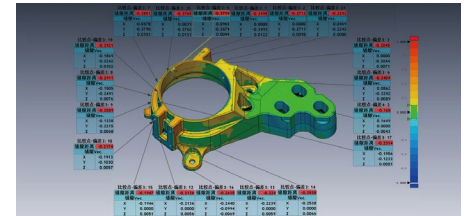
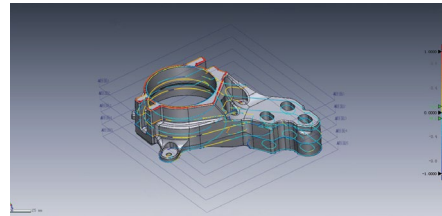
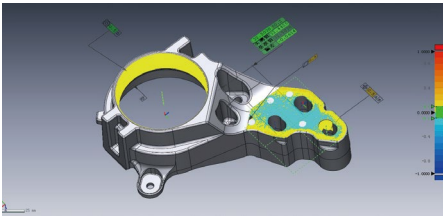
## SMART INSPECTION

User can modify any steps of the inspection process and the software shall update all related steps automatically. User has the right to modify till getting the best inspection result.



## HIGH ACCURACY

Repeatability is an important part of quality control process. SHINING 3D full dimension inspection solution could help user realize this repeatability easily. Its automation also minimizes the error difference from user to user.



# TECHNICAL SPECIFICATIONS

## OPTIMSCAN-5M

Model	OptimScan-5M
Single Shot Accuracy	0.005-0.015 mm
Single Scan Speed	< 1.5 s
Point Distance	0.04-0.16 mm
Single Scan Range	100x75 mm / 200x150 mm / 400x300 mm
Scan Depth	100-400 mm
Camera Resolution	5.0 MPx2
Light Source	Blue light (LED)
Scan Type	Non-contact structure light scanning
Alignment	Reference points auto-alignment / manual alignment
Output Data Format	ASC, STL, PLY, RGE, P3, PF
PC Configuration Requirement	CPU: Intel core i7 3770 or better Display card: NVIDIA GeForce GT 670 or better Memory : 8G DDR3 1600 or better
OS System Support	win10 64bit
Operation Temperature	0 to 45 °C

\*Notice: SHINING 3D reserves the right to explain any alteration of the specifications and pictures.