

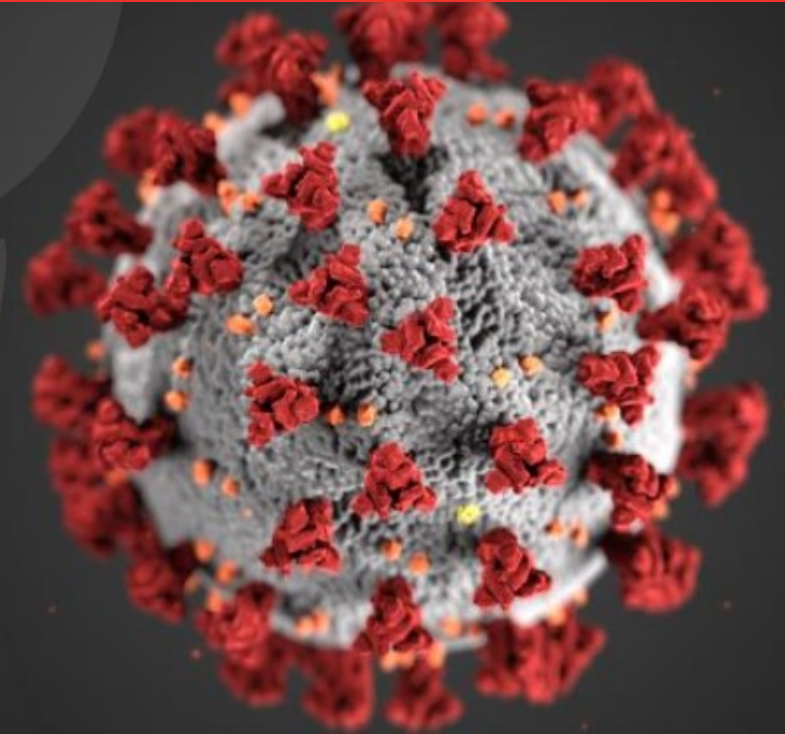


A Publication of

ORANGE COUNTY COMMUNITY FOUNDATION, INC.

1075 North Sandy Hook Road, Suite 2

Paoli, IN 47454



PHILANTHROPY

DURING A PANDEMIC

ORANGE COUNTY COMMUNITY FOUNDATION, INC.

Annual Report to the Public

2019-2020

TABLE OF CONTENTS

President's Message

Executive Director's Message

Crisis Response

2020 Fred and Ethel Crowe Award

2021 Lilly Scholar

Youth Council

Implementation Grant

Community Scholarships

Community Grants

Board of Directors

Staff

Funds for Orange County

Audited Financial Statements 2019-2020

Upon the departure of former President of the Board of Directors, Janalyn VanEmon, Miles Flynn was chosen by his board peers to serve as the new leader of the Orange County Community Foundation, Inc. He is the youngest to ever serve in the capacity as board president.

A former Philanthropist of the Year for his devotion to serving the people of Orange County, Miles comes to us with an extensive career in radio and print media. Currently, he serves as Managing Editor of the Paoli News Republican and other local newspapers.

He and his wife, Stacie, reside in Paoli with their daughter, Alexandra.

A MESSAGE FROM OUR PRESIDENT



MILES FLYNN
President of the Board

Fred Rogers said when he was a little boy and saw something terrible in a newscast, his mom would always encourage him to look for the helpers. “To this day, especially in times of disaster, I remember my mother’s words, and I am always comforted by realizing that there are still so many helpers — so many caring people in this world,” he remembered.

We can all relate to these words today, no matter our age, as we struggle to navigate this extraordinary time. Globally and here in little Orange County, it’s truly inspiring to see so many people lending a hand during a crisis that’s pushed need to unprecedented levels. Despite the challenges, though, those helpers just keep helping in countless ways.

And no matter what immediate individual needs they may think they’re addressing, like feeding the hungry, we know they’re simultaneously meeting our biggest shared need — reassurance that, eventually, we’re all going to get through this, together. Let’s keep our eyes on the helpers and find our way to better days.

A LETTER FROM OUR EXECUTIVE DIRECTOR

COVID-19 may have dominated the past year, but it will not completely define 2020. On the contrary, we have discovered during this pandemic year that the hearts of Orange County’s people are larger, stronger, and greater than any virus could ever be. What will define 2020 in Orange County is the generosity of spirit and the willingness to give that overwhelmed the ravages of the viral pandemic.

It’s true we have known for years that the people of Orange County are truly caring and giving when it comes to their fellow man. But this year in particular brought that fact home in a most poignant way with Individuals, organizations, community partners, and corporations alike coming together to ease the struggles of those impacted most negatively by COVID-19. And we were privileged to see it take place right here.

Community partners, local and regional corporations, and individuals all stepped forward to fight back against COVID-19, to look for ways to lessen its impact on the non-profits serving Orange County, and to ease the burdens brought on or made worse by the pandemic.

We were truly blessed to have been a central point of this giving, privileged to act on behalf of the generous and caring people who accepted the challenges that COVID-19 presented and to have helped them serve Orange County’s people.

Together, we played a role in our community’s survival of this pandemic. Now we want to help Orange County to thrive despite the many obstacles and roadblocks this health crisis has presented.

We thank you, Orange County...for both your generosity and your many kindnesses toward your fellow man. If the true spirit of philanthropy is demonstrated anywhere, it’s right here in our little corner of Southern Indiana.



IMOJEAN DEDRICK
Executive Director

Many thanks to those who provided grants and contributions to the COVID Response and Relief Funds:

IU HEALTH

UNITED WAY OF
SOUTH CENTRAL
INDIANA

LILLY ENDOWMENT
INC

HOOSIER HILLS
CREDIT UNION

DUKE ENERGY
FOUNDATION

JANET FARLOW
PERRY

ANONYMOUS
DONORS

WENDELL & HELEN
GOOCH FUND

ADD AND MABEL
GRAY FUND

OCCF
DISCRETIONARY
FUND

OCCF PROGRAM
FUND

A YEAR OF “NEW NORMAL”

Fully aware of the impact that the pandemic would have on our local non-profits and—perhaps most importantly—the people they serve in Orange County, the Foundation responded immediately by diverting funds from unrestricted endowments, program funds, and discretionary monies to form the Orange County Crisis Response Fund. In the weeks and months that followed, we were very happily surprised by the outpouring of support received from local individuals, corporations, foundations, and partners.

This may have been a year of struggle and hardship, but it has also been a year of inspiration, with people throughout the county helping one another, rounding up food and children’s items, supporting local businesses and local professionals, and in general learning to live under a “new normal.” We learned that meetings can be held virtually and still accomplish goals. We learned that wearing a mask was perhaps the highest form of respect you could show for one another. We learned that dry hands and unattended hair would not kill us, but the virus lurking amongst us could.

We mourned the loss of those who fell victim to COVID-19, and cheered the efforts of those who fought and overcame it. We watched businesses close, and reopen, and close again in the interest of public health. We watched our local health care workers band together to fight the disease and to serve those suffering from it.

We learned to listen, to heed, and to practice personal protection procedures as daily rituals. Our lives changed, our priorities changed, and everything around us changed.

One thing, however, remained the same...COVID-19 may have changed your lives, Orange County, but your hearts remain as caring and giving as ever. Thank you.

COVID-19 RESPONSE GRANT RECIPIENTS

Mercy Center

Love Never Fails Outreach Ministries

Paoli Food Pantry

Orange County Transit

Southern Indiana Community Health Care

Youth First

First Chance Center

LifeSpring Health Systems

Prevent Child Abuse Orange County

Orleans Municipal Fire Department

French Lick-West Baden Museum

New Hope Christian Church Coats for Kids

Orleans Community School Corporation PPE supplies

Springs Valley Education Foundation Coats for Kids

Springs Valley School Corporation Outside Classroom

Hoosier Uplands Economic Development Corporation

Orleans Food Pantry

Springs Valley Food Pantry

Orange County CASA

Campfire Ministries

Living Peace Center for Women’s Ministries

More than
\$104,000
in COVID
Response
and Relief
funding
provided
so far

\$170,700 in
COVID
Response and
Relief Grants
received
during 2020

HEATHER NICHOLS

2020 Educator Award Recipient

Chosen to receive the 2020 Fred and Ethel Crowe Education Award was Paoli High School teacher Heather Nichols, who received a \$500 gift for her educational and community involvement, as well as exhibiting innovative and cooperation resulting in her students' achievements.

"In a time when the education of students changed dramatically, Mrs. Nichols immediately rose to the challenge. When tasked with requiring every teacher to create ten days of e-learning into a single day, she assisted. She pulled previous school-wide e-learning plans and helped revamp them to meet the current situation. Her input aided in the seamless implementation of the undertaking," it was stated in the letter nominating Nichols.

Over the weeks following the beginning of the pandemic, Mrs. Nichols was involved in a number of activities, including service as Building Chair for the PHS Improvement Committee, facilitator of the Sunshine Project, and Caring Crew Sponsor.

Every year, Nichols coordinates Service Learning Day, contributing countless hours ensuring that each student gets the opportunity to give back to the community.

She also shines in the classroom. Viewed by her peers as an exemplary teacher, she is often looked to for advice and guidelines. Her students benefit from her dedication and enthusiasm, as well. Many of them have earned awards and accolades from the Southern Indiana Student Press Association, the Indiana Indiana High School Press Association.

In the community, Mrs. Nichols is a star, as well. She serves as the Paoli Public Library Board President, managed the community COVID-19 Facebook Group, and taken on numerous other leadership responsibilities.

The twelfth Paoli teacher to receive the Crowe Award, Nichols follows Tom Stuckwisch, Martha Nice, Rachel Wyatt Carter, Kathy Seacat, Holly Vincent, Susanne Crane, Marsha Wells, Bill Laughlin, Janice Apple, Larry Hollan, and Brandi Kerley. The award was established by the children of Fred and Ethel Crowe in their memory.



HEATHER NICHOLS

MACKENZIE FREED

2021 Lilly Endowment Community Scholar



MACKENZIE FREED

Orange County.

During her high school career, Mackenzie has been a member of Student Council, Pep Club, Fellowship of Christian Athletes and Tri-Hi-Y. She is Vice President of her school's chapter of National Honor Society and is the Blood Drive Coordinator for NHS, as well. She acts as Treasurer of the OHS chapter of Business Professionals of America, is a Varsity Cheerleader and is the editor of the OHS yearbook, the Orleans. She has been a cadet teacher at Orleans Elementary, and was a student representative on the COSMOS committee.

Mackenzie has served as president of the Orange County Community Foundation Youth Council for two years and has volunteered her time with the Silver Bells project, the Community Thanksgiving Dinner, Angel Tree projects, Orleans Christian Church Youth Group, Colts Books for Youth, and Bulldog Backpacks. Other projects Mackenzie has volunteered with include visiting residents at Paoli Health & Living, Mitchell Manor window painting, and helping with bowling competitions for Special Olympics.

Mackenzie Freed, a senior at Orleans High School, has been named the 2021 Lilly Endowment Community Scholar. As a Lilly Scholar, Mackenzie is the recipient of a four-year, full-tuition scholarship to the Indiana college of her choice and a \$900 yearly stipend for required books and equipment.

The daughter of Bennie and Dawn Freed, Mackenzie has plans to attend either Hanover, Butler, University of Evansville, or Indiana Wesleyan University to study elementary education, with a minor in special education. She is the 40th Lilly Scholar to represent

"Even from a very young age, I knew what I wanted to do for the rest of my life. Many kids go back and forth between career choices; however, my decision never had any ounce of uncertainty in it. I plan on being an elementary school teacher.

I want to be a motivator, believer, innovator, and most importantly, an educator. To be a teacher in the state of Indiana, you must hold a bachelor's degree. This is how going to college and furthering my education comes in. I plan on going to a four-year college to obtain a degree in elementary education with a minor in special education. Once I graduate, I aim to land a job in Orange County."

Mackenzie Freed
2021 Lilly Scholar

OCCF YOUTH COUNCIL

Undaunted by a Year of Pandemic

It's one thing to watch adults who have met challenges for years to overcome something like an unprecedented pandemic, but to see young people in action doing the same has been both gratifying and incredible.

Unable to meet as they once did due to personal protection concerns, the OCCF Youth Council decided instead to meet in a space large enough to accommodate social distancing to plan and execute their programs and projects for 2020 and beyond. In their own efforts to address the impact of the COVID-19 virus on Orange County, they granted COVID response funding from the 2020 payout of their endowment fund, created and provided alternative ways to teach philanthropy to the county's fourth graders, provided gifts for the county's CASA children, created care packages for nursing home residents, and collected hats and gloves for children in each of the county's school systems.

The old saying goes "you can't keep a good man down." Well, it appears these young men and women wouldn't be kept down, either. Though their lives were changed as drastically by the pandemic as most, they continued to forge ahead in several efforts to address the challenges that the virus imposed on the daily lives of local people...not just making the best of a bad situation, but continuing to help others while they were at it.

The future of local philanthropy is in the hands of young people like the members of the Youth Council. We feel it's safe to say that the future is safe with them.



OCCF YOUTH COUNCIL:

Aubrey Bledsoe
Brynne Buchanan
Mady Burton
Laykin Busick
Jack Dalton
Karson Dalton
Emily DeWitt
Sarah Drabing
Jackson Freed
Mackenzie Freed
Wesley Goldman
Clara Henderson
Serenity Hewitt
Julie Isom
Allison Jones
Corinne Magner
Olivia McSpadden
Mya Miller
Margaret Naumoff
Haley Owens
Lucas Pingle
Ben Pinney
Riley Reed
Brooklyn Robison
Bostyn Rowlett
Bella Shipman
Gabrielle Stemle
Serenity Sweet
Molly Tucker
Chaeli Vernon
Maggie Vincent
Emily Weisensteiner

YC MENTORS:

Robin Brown
Imojean Dedrick
Dawn Freed
Linda Gerkin
Holly Newkirk
Destany Pingle

IMPLEMENTATION GRANT—GIFT VII

Lilly Endowment Inc's GIFT VII initiative was comprised of many components, with all of them benefitting Orange County in one way or another. But perhaps the most exciting component of this particular initiative as the opportunity for grants to implement community projects.

With food insecurity and the need for healthy food options a major concern for our area, Lost River Co-Op seemed to be the logical choice for the GIFT VII implementation initiative in Orange County. Its involvement in the local farmers markets and the food co-op itself provide healthy food options as well as opportunities for local farmers and growers to vend their products. From the \$100,000 implementation grant that the Foundation received from Lilly Endowment, we have enabled Lost River to engage in a number of projects and have helped provide the means of implementing those projects. Among the components of Lost River's programs funded through this initiative are:

- Expansion and upgrading of cold storage facilities, enabling the co-op to store more local products and to provide produce beyond the growing season.
- Community kitchen brought to state health standards and utilized by both Orange County HomeGrown and local food artisans to prepare items to sell at the co-op or for local caterers to safely prepare meals for their customers. The grant included funding for processing equipment and small items for the kitchen, as well.
- Farm to Health Community Dinners, four dinners prepared and served seasonally in local communities to spotlight local chefs, locally-grown products, and promote community spirit.
- Marketing and entrepreneurial training opportunities for local farmers and growers to prepare them to for successful business ventures.
- Promotional materials to highlight local growers and educate the community regarding the value of locally-grown, healthy food options.
- Prescription food boxes, designed by physicians to address their patients' specific nutritional needs.
- Refrigerated van for catering services from the co-op as well as to take food programs on the road for presentation throughout the county.
- A value chain coordinator to provide quality organization and productivity in a farm-to-health initiative.
- Safe cooking classes for both the public and for food artisans and caterers.
- Recipe boxes, Produce of the Month programs, school programs, and more.



GIFT VII

Orange County has benefited from a number of components offered by Lilly Endowment Inc's GIFT VII initiative.

\$500,000 was provided for matching funds for gifts to endowments. In December 2019, the amount of matching funds made available for endowments other than unrestricted funds was met. The following year, the amount designated for unrestricted endowments only was matched.

A subsequent \$50,000 planning grant provided capacity building funds to enable the Foundation to convene community partners, assist with training and education in community leadership, and to prepare our own staff to further our role as a community leader

COMMUNITY PROGRAMS

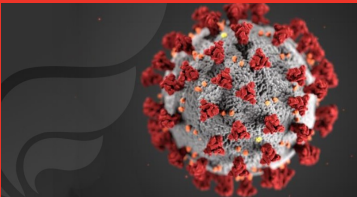
The Lost River project is just one of the many community programs and collaborations we have begun. When COVID is beaten, we will forge ahead with more exciting projects to build a better community...together.

2020
COMMUNITY
SCHOLARSHIPS

Despite the challenges presented by the COVID-19 pandemic, seniors still graduated and moved on to study—often virtual-ly—at colleges, uni-versities, trade and technical schools, and more.

The Foundation is proud of the many ways in which we and all our generous do-nors help support the educational aspira-tions of Orange Coun-ty’s youth.

During the 2019-2020 fiscal year, more than \$48,000 was provided through Foundation funds to local stu-dents pursuing higher education



2020 SCHOLARSHIP RECIPIENTS

- Addilyn Buffington**—Joseph W. Crowder Memorial
Addison Stailey—George and Evelyn Sorrells Memorial, Joseph W. Crowder Memorial, Orange County Child Care Co-Operative
Aron Busick—Louis D. and Winnora G. Allen Memorial
Avery Owens—IU Health Paoli Hospital, Paoli Meridian Lions Club
Barbara Rutherford—Smithville Charitable Foundation Non-Traditional
Caleb McCracken—Joseph W. Crowder Memorial
Charleigh Land—Joseph W. Crowder Memorial
Elizabeth Kerby—James A. Babcock Memorial
Elizabeth Godsey—Dr. E.T. Uyesugi Memorial
Emma Denbo—Joseph W. Crowder Memorial, Terry L. Nofziger Memorial
Erica Workman—Neva Fleming Memorial
Grayson McGowan—Delta Chapter Kappa Kappa Kappa in Honor of Elinor Jones, Leon and Mary Newlin Lewis Memorial
Hailey Clark—French Lick H.S. Alumni, Joseph W. Crowder Memorial
Hailey Hutslar—Rosetta Mae Atkinson Memorial
Harley Bush—Maud Anna Ham Memorial
Hunter Morgan—Smithville Charitable Foundation Non-Traditional
Hyla Friedman—Dogwood Pedal Century Ride, Joseph W. Crowder Memorial
Jacob Tapp—Clarice White Bridgewater Memorial
Jacquelin Gerkin—Kenny and Madge Newlin Memorial, Leonard and Janet Vaught
Jalyn Engleking—Jesse Pease, Kerry Wyatt, Mary Beth Cornwell Memorials
Jaylin Busick—Smithville Charitable Foundaiton Non-Traditional, Orange Co. Child Care Co-op
Josey Bledsoe—Kelly Tow Memorial
Kaden Lewellyn—Ruth Farlow Uyesugi Memorial
Keighan Shawler—Sugarman Memorial
Kelly Simmons—Charles and Violet Galloway Memorial, Don and Dody Conrad Agriculture, Hoosier Hillside's Master Gardeners, Joseph W. Crowder Memorial
Koby Durbin—Donnie Martin Memorial
Kyla Lee—Dogwood Pedal Century Ride
Lauren Rutherford—Stephanie Babcock/Bailey Carty Memorial, Cpl John D. Cook Memorial, James A. Babcock Memorial, Louis D. and Winnora G. Allen Memorial
Maddy McDonald—Moore Family Scholarship in Memory of Sandra Moore
Maddison Cunningham—Donnie Kee II Memorial, Dr. Vic Combs Memorial
Madison DeCarlo—Russell O. Doan Memorial
Madison Qualkenbush—Dogwood Pedal Century Ride
Madison Robertson—Alexander Award, Anita Bradford & Justin Moon Memorials
Monica Robinson—Maurice and Evelyn Tow Memorial
Montana Sullivan—Arminta Sue Magner, Billy Drury, & Jared Hammack Memorials
Parker Sullivan—C.B. Stout Memorial
Sydney Owens—Mark Sisco Memorial
Tyson McLaughlin—Justin Mullis Memorial
Wyatt Hopper—Kenny and Madge Newlin Memorial

2020 COMMUNITY GRANT RECIPIENTS

In addition to the grants made from crisis response funds during the 2019-2020 fiscal year, the Foundation provided more than \$280,000 in community grant funding from its annual funds. These funds include unrestricted, field of interest, designated, donor-advised, and supporting organization funds endowed for a number of charitable purposes.

OCCF SHARE THE LOVE FUND:

- Black Vulture Project
- Goody-B's
- Hoosier Hills Food Bank
- Let Music Speak
- Melton Public Library
- Orange County Health Department
- Orange County Service Council
- Paoli Food Pantry
- PHS SADD
- Paoli Park Playground Project (Playoli)
- United Way of South Central Indiana—(Imagination Library)
- Orange County Habitat for Humanity
- Prevent Child Abuse Orange County

ORANGE COUNTY CHILD CARE CO-OP FUND:

- Orleans Running Start
- United Way of South Central Indiana—(Imagination Library)
- Youth First
- On My Way Pre-K Capacity Building

OCCF EDUCATION/CAPE FIELD OF INTEREST FUND:

- Backpacks of Blessings
- Blackhawk Blessings
- Orleans Running Start
- Youth First
- On My Way Pre-K Capacity Building

PAOLI, INC FUND:

- First Chance Center

JAMES FARLOW AND MABEL MILLER DONOR-

- ADVISED FUND:
- Paoli Public Library

LUKE AND DONNA MOSEMAN DONOR-ADVISED:

- Orange County Habitat for Humanity
- Backpacks of Blessings
- Paoli Food Pantry
- Orange County Players
- Orange County Humane Society
- Good Samaritans
- Mercy Center

NICE-RIESTER FAMILY FUND

- Orange County Habitat for Humanity

TEGARDEN UNRESTRICTED FUND:

- Orleans High School Art Department
- Orleans Food Pantry
- Kappa Kappa Kappa Eta Chapter (RIF Program)
- Orange County Homegrown Farmers Market

SIMMONS UNRESTRICTED FUND:

- Orleans Public Library
- Orleans Running Start

SOL STRAUSS SUPPORTING ORGANIZATION:

- Paoli School Nurse
- Growing Resilient Rams
- Safe Families
- Tots to Tots
- Paoli Park Playground (Playoli)
- Town of Paoli (Marea Radcliff Park)
- IU Health Paoli Hospital

ORANGE COUNTY COMMISSIONERS SUPPORTING ORGANIZATION

- Orleans Community Schools
- Paoli Community Schools
- Springs Valley Community Schools

OCCF BOARD OF DIRECTORS

EXECUTIVE COMMITTEE



MILES FLYNN
President



MICHAEL MCCULLOUGH
Vice-President



MARSHA TELLSTROM
Secretary



SHANE BUFFINGTON
Treasurer



HEATHER ROSS

The Executive Committee leads the board, and its members chair a number of established committees.



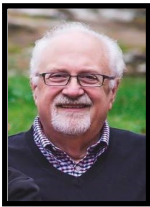
SANDY BLANTON



LEE COLLINS



SUSANNE CRANE



DOUG FINNEY



CHRISTOPHER FLEENOR



SUSAN GILMORE



BRENDA JOHNSON



ROGER MOON



MARSHALL NOBLE



KATLIN PHILLIPS

The Orange County Community Foundation, Inc. Board of Directors consists of 15 individuals selected from the Orange County community to represent a diversity of interests, expertise, and abilities. To ensure equal representation, there are five members from the Orleans school district, five from the Paoli school district, and five from the Springs Valley school district. Terms are for 3 years, with the possibility of serving three terms. Four new members came onboard at the end of the 2019-2020 fiscal year: Lee Collins, Susanne Crane, Brenda Johnson, and Roger Moon. They replaced outgoing members that included former president, Janalyn VanEmon.

OCCF STAFF

Combined, the OCCF staff have 33 years of experience with the Orange County Community Foundation, and bring with them expertise in the areas of marketing and advertising, finance, federal and state compliance, business administration and management, public relations, and media.



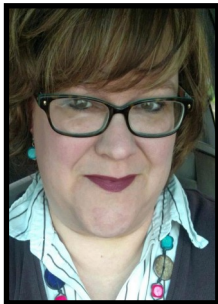
IMOJEAN DEDRICK, Executive Director

Dedrick has been with the Foundation since 2004 and is only the second Executive Director since the Foundation disaffiliated from Lawrence County Community Foundation in 2001. Her duties include setting the direction of Foundation programs and projects, donor relations, and Foundation liaison with the Board of Directors, Foundation partners, and the community at large.



CATHY HARDIN, Manager of Finance and Administration

Joining the Foundation staff in 2006 as Accountant, Hardin has since taken on the tasks of compliance, media and marketing, and the creation of policies and procedures. Her duties include the annual budget, annual payout, marketing planning and implementation, and financial management of the funds held by the Foundation.



DESTANY PINGLE, Program Associate

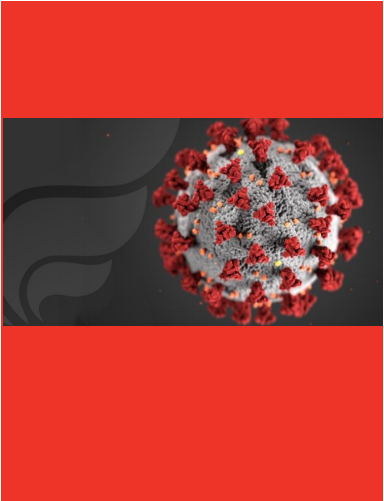
Relatively new to the Foundation, Pingle joined the staff in 2017. Since then she has improved and expanded the grants and scholarships online application process and streamlined reporting. Her duties include the OCCF Youth Council, administration of grants and scholarships programs, and facilitation of the Lilly Community Scholarship program.

FUNDS FOR ORANGE COUNTY

DONOR-ADVISED	Orange County Humane Society	Kelly Tow Memorial
Hollis Denbo	Orange County Players	Simmons Fund for Old Union
James Farlow and Mabel Miller	Wonder Valley Christian Assembly	OCCF Operating Endowment
F. Wendell and Helen M. Gooch		
Luke and Donna Mosemann	Orange County Chapter of the	SCHOLARSHIPS
Clements Family	Daughters of the American Revolution	Orange County Community
Nice-Riester Family	Orange County Habitat for Humanity	Alexander Art Award
Smithville Charitable Foundation	Delta Chapter Kappa Kappa Kappa	Lewis & Winnora Allen Memorial
	Orleans School Corporation	Bradley, Henderson, Humphreys and Puckett
FIELD OF INTEREST	Orleans Town and Township	James A. Babcock Memorial
OCCF Education/CAPE	Public Library	Stephanie Babcock and Bailey
	Orleans Christian Church	Carty Memorial
DESIGNATED	Paoli Christian Church	Anita Bradford Art
Virginia Combs Literacy	Friends of Paoli Public Library	IU Health Paoli Hospital
Good Samaritans	1st Presbyterian Church of Paoli	Robert J. Cloud Memorial Citizenship Award
Chuck Akers Memorial	Paoli School Corporation	Dr. Vic Combs Memorial
Dallas Tyler	Southern Indiana Community Health Care, Inc	Don and Dody Conrad Agriculture
Saving Historic Orange County	Springs Valley School Corporation	Cpl. John D. Cook Memorial
Springs Valley Education Foundation	Paoli Mennonite Fellowship-Missions	Mary Beth Cornwell Memorial
Fred and Ethel Crowe Education Award	Paoli Mennonite Fellowship-Operations	Joseph Crowder Memorial
French Lick-West Baden Museum	David K. Ross Fund for the OCCF Youth Council	Billy Drury Memorial
First Chance Center	Irvin and Melba Mefford Fund	Russell & Reba Farlow Memorial
Friends of Tots to Tots	Kearby-Walters Fund	Donnie Martin Memorial
Melton Public Library	Backpacks of Blessings	Keith Howard Memorial
Orange County 4-H Clubs Assn.	Running Start (Throop)	Neva Fleming Memorial
Orange County Child Care Co-Op	Throop Elementary PTO	Charles and Violet Galloway
IU Health Paoli Hospital		Clarice White Bridgewater Mem.
Orange County Historical Society		Dogwood Pedal Century Ride
William and Mid Hoke Fund for the Orange County Historical Society		Russ and Reba Farlow Memorial
Orange County Humane Society		French Lick Alumni Association
Hackney-Ferguson Fund for the		Maud Anna Ham Memorial
		Jared Hammack Memorial

FUNDS FOR ORANGE COUNTY (continued)

Hoosier Hillside's Mstr Gardeners	Smithville Charitable Foundation	Running Start—Orleans
Margaret Houston Memorial	USS Chimaera Star Trek Club	Running Start—Paoli
Kappa Kappa Kappa in Honor of Elinor Gardner Jones	Ruth Farlow Uyesugi Memorial	Running Start—Springs Valley
Donnie Kee III Memorial	Leonard and Janet Vaught	Throop Elementary Sixth Grade
Arminta S. Magner Memorial	Kerry Wyatt Memorial	Throop Jubilee Christmas
Memories of Our Mothers	UNRESTRICTED:	Springs Valley Comm. Christmas
Justin Moon Memorial	William and Connie Jenkison	SV Adopt-a-Classroom
Moore Family in Memory of Sandra Moore Pearson	Share the Love	Springs Valley Pet Services
Kenny and Madge Newlin Mem.	OCCF Youth Council	Schmidt Family Fund
Leon and Mary Newlin Lewis	Paoli, Inc	Charlie's Angels
Terry Nofziger Memorial	Simmons	OC Cancer Patient Services
Leon and Eva Johnson Memorial	Tegarden	Orange County Service Council
Justin Mullis Memorial	Add and Mabel Gray	Orange Co. Spelling Bee
James M. Thompson Memorial	Michael and Janalyn VanEmon	Orange Co. Mentoring Program
Orange County Child Care Co-Op	Red and Versa Burke	On My Way Pre-K Capacity Bldg.
Paoli Meridian Lions Club	Fred Sensing Memorial	Tri-County COVID Relief Fund
Jesse Pease Memorial	Duke Energy	IU Health COVID-19 Response
PHS Alumni		Orange County Crisis Response
P.H. Rynehart Memorial	SUPPORTING ORGANIZATIONS	OCCF Operating
Mark Sisco Memorial	Orange County Commissioners	OCCF Youth Council
Simmons	Sol Strauss	OCCF Scholarships Pass-thru
George and Evelyn Sorrells	NON-PERMANENT	
C.B. Stout Memorial	Good Samaritans	
Sugarman Memorial	Nofziger Family Fund	
Syria Christian Church	French Lick Artisans	
Kelly Tow Memorial	French Lick West Baden Museum	
Maurice & Evelyn Tow Memorial	Friends of Paoli Library	
Dr. E.T. Uyesugi Memorial	Backpacks of Blessings	
Orleans School Foundation	Blackhawk Blessings	
Newlin-Stout	Bulldog Backpacks	
Rosetta Mae Atkinson Memorial	Paoli Park Playground (Playoli)	
Russell O. Doan Memorial	Rick Magill Clothe-a-Child	
Ray Gardner Memorial		



ORANGE COUNTY COMMUNITY FOUNDATION, INC.

Statement of Financial Position
Fiscal Year Ended 09-30-2020

ASSETS

Cash and cash equivalents	\$ 344,603
Investments—money market funds	181,355
Investments—Schwab endowed	10,633,245
Accounts receivable	100,000
Property and equipment	4,059
(less accumulated depreciation)	

Total assets **\$11,263,262**

LIABILITIES AND NET ASSETS

Liabilities:

Accounts payable	\$ 49,916
Accrued expenses	8,516
Deferred revenue	<u>23,298</u>
Total liabilities	81,730

Net Assets

Net assets without donor restriction

Donor-advised funds	734,377
Donor designated funds	4,205,537
Board designated funds	5,168,922
Other	45,807

Net assets with donor restrictions 1,026,889

Total net assets 11,181,532

Total liabilities and net assets **\$11,263,262**

ORANGE COUNTY COMMUNITY FOUNDATION, INC.

Statement of Activities
Fiscal Year Ended 09-30-2020

NET ASSETS WITHOUT DONOR RESTRICTIONS

Public Support and Revenues

Contributions and grants	\$ 692,308
Realized and unrealized gain on investments	329,826
Investment interest and dividends	284,400
Administration fees	317,628
Rent	4,200
In-kind	100
Other	235
Loss of sale on asset	(460)
Net assets released from restrictions	<u>16,265</u>
Total revenue and public support	1,644,502

Expenses

Program	955,437
Management and general	261,411
Fund-raising	<u>92,358</u>
Total expenses	<u>1,309,206</u>
Net change in assets w/o restrictions	335,296

NET ASSETS WITH DONOR RESTRICTIONS

Public support

Contributions and grants	190,171
Realized and unrealized gain on investments	28,693
Investment interest and dividends	21,292
Net assets released from restrictions	<u>(16,265)</u>
Change in net assets w/restrictions	<u>223,891</u>
Change in net assets	559,187
Net assets at the beginning of the year	<u>10,622,345</u>
Net assets at the end of the year	\$11,181,532