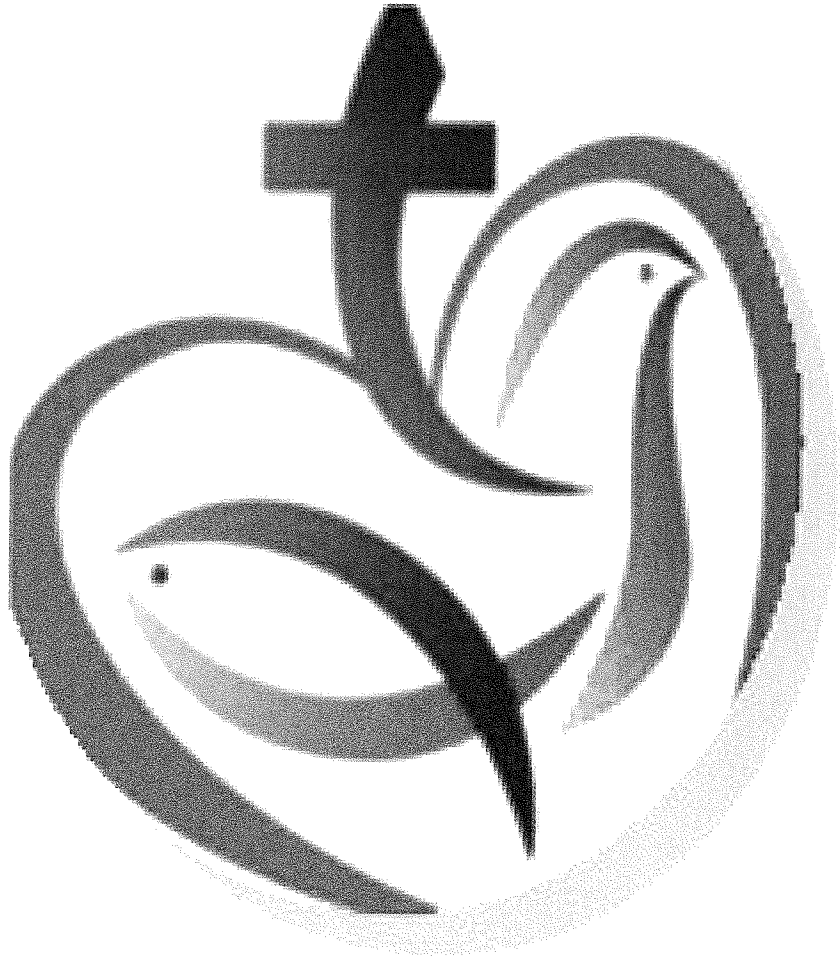


Welcome to Worship with Holy Communion



**Bringing Christ To All People
Today And Every Day**

GATHERING TOGETHER

WELCOME - Make a special effort to welcome our visitors!! Christ Lutheran Church is a weapon, smoke, vape and tobacco free church and campus. We share Joys, News, and Concerns.

PRELUDE

We take a quiet moment to prepare our hearts and minds to worship God.

GATHERING HYMN/CHOIR ANTHEM - Stand As You Are Able

YOUTH/YOUNG IN SPIRIT MESSAGE

APOSTOLIC GREETING

P The grace of our Lord and Savior Jesus Christ, the love of GOD our Father, and the communion of The Holy Spirit be with you all!

C And also with you!

CONFESSION

P In the Holy Name of the Father, and of the ✝ Son, and of The Holy Spirit!

C Amen!

P Baptized into Jesus Christ, let us confess our sin!

Silence for reflection and self-examination

P Merciful God our Father,

C by The Holy Spirit's power you free us to love others as Jesus first loves us, but often we neglect our neighbors and follow our own way. You lead us by Jesus' joy and peace, but often we turn away from the abundant life you offer. You surround us with Jesus' patience, kindness, and generosity, but often we grow weary in doing what is right. In your mercy, forgive us. Do not give up on us. Heal us, break our bondage to sin, and show us your path of life. Amen!

P We belong to Jesus Christ and we are God our Father's children through faith. In the cross of ✝ Jesus Christ, and through the power of The Holy Spirit, our sins are forgiven. Clothed with Jesus' righteousness, we are a new creation!

C Amen!

SHARING THE WORD

PRAYER OF THE DAY

P Let us pray!

C Benevolent God our Father, you are our source, our guide, and your will is our goal for our lives. By The Holy Spirit's power, continue to teach us to love what is worth loving, to reject what is offensive to you, and to treasure only what is precious in your sight, through your Son, Jesus Christ our Savior and Lord. Amen!

PRAYER FOR THE WORLD

[P] Let us pray!

[C] Let us pray for all victims of any forms of violence, terror, human trafficking, and all displaced peoples; all victims of ethnic, racial, gender, sexual, political, and religious discrimination and violence; all victims of natural disasters or human made disasters; all victims of war or warlike activity, conflict, oppression and strife including in Gaza, Israel and Ukraine; and for Jesus' Gospel to reach the Hindu Kurmi People in India. Gracious GOD our Father of healing and wholeness, through the power of The Holy Spirit, bring relief in every way you see fit for those impacted by natural disasters, human made disasters, conflicts, persecutions and wars. Empower all peoples to reach out to those impacted through the healing power of Jesus Christ. GOD our Father, † Son and Holy Spirit, we admit our human frailties and recognize we live in a fallen creation. Restore us each and every way as you see fit so that your will is done. In Jesus' Holy Name we pray. Amen!

SCRIPTURE HYMN/CHOIR ANTHEM

GOSPEL - Stand As You Are Able

SERMON

APOSTLES' CREED - Stand As You Are Able

[P] Living together in faith, trust, and hope, let us confess our faith together!

[C] I believe in God, the Father almighty, creator of heaven and earth. I believe in Jesus Christ, God's only Son, our Lord, who was conceived by The Holy Spirit, born of the virgin Mary, suffered under Pontius Pilate, was crucified, died, and was buried; He descended into hell. On the third day He rose again; He ascended into heaven, He is seated at the right hand of the Father, and He will come to judge the living and the dead. I believe in The Holy Spirit, the holy catholic church, the communion of saints, the forgiveness of sins, the resurrection of the body, and the life everlasting. Amen!

THE BANQUET

COMMUNION LITURGY

[P] Holy, mighty, and merciful Lord, heaven and earth are full of your glory. In great love you sent to us Jesus, your Son, who reached out to heal the sick and suffering, who preached good news to the poor, and who, on the cross, opened His arms to all.

- In the night in which He was betrayed, our Lord Jesus took bread, and gave thanks; broke it, and gave it to His disciples, saying: Take and eat; this is My body, given for you. Do this for the remembrance of Me.

- Again, after supper, He took the cup, gave thanks, and gave it for all to drink, saying: This cup is the new covenant in My blood, shed for you and for all people for the forgiveness of sin. Do this for the remembrance of Me.

- Remembering, therefore, His death, resurrection, and ascension, we await His coming in glory.

- Pour out The Holy Spirit, that by this Holy Communion we may know the unity we share with all your people in the body of your Son, Jesus Christ our Lord.

- Through Him, with Him, in Him, in the unity of The Holy Spirit, all glory and honor is yours, almighty Father, now and forever!

[C] Amen!

LORD'S PRAYER - SING

INVITATION TO COMMUNION

P Come to the Banquet, for all is now ready!

C Thanks be to God!

All Baptized Christians who believe in Jesus Christ as Lord and Savior are welcome at the Lord's Table. We receive His continuing forgiving presence in our lives, along with His mercy, salvation, and promise of eternal life. You are also invited to come forward for a blessing. Pick up a communion wine cup from the cup stand. Receive the host bread from the Communion Assistant and the wine from the Pastor. Tell the Communion Assistant if you prefer gluten-free bread and the Pastor if you prefer grape juice. Return your used cup to the tray from the Communion Assistant.

HOLY COMMUNION HYMN/CHOIR ANTHEM

TABLE BLESSING

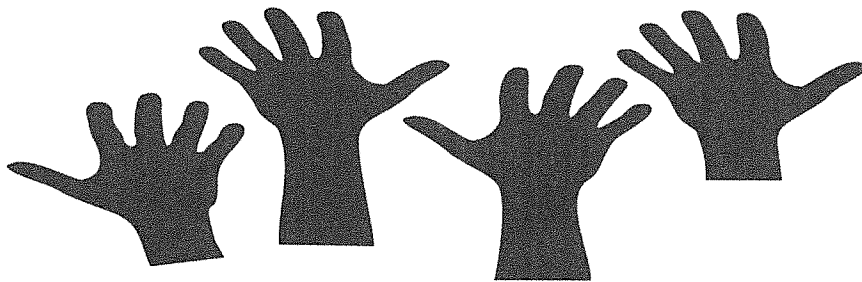
P The Body and Blood of our Lord and Savior Jesus Christ strengthen us and keep us in His grace now and forever!

C Amen!

THE SENDING

BLESSING - SING - Stand As You Are Able

C Blessed be the Name of the Lord; He is worthy to be praised and adored; So we lift up holy hands in one accord, singing, "Blessed be the Name, blessed be the Name, blessed be the Name of the Lord!" We are Jesus strong! Amen!



SENDING HYMN/CHOIR ANTHEM

FINAL SENDING

P Continue to bring Christ to all people today and everyday! Go in Peace! Share the good news!

C We will with thanks to GOD! Amen!

LESSONS & FINANCIALS

Time After Pentecost, August 31, 2025



Worship Services
with Holy Communion
At 9:00 am & 10:30am

Christ Lutheran Church
15699 SE 80th Avenue
Summerfield, FL 34491
352-307-6900
Mailing Address
P.O. Box 693,
Summerfield, FL 34492

Website: christlutheranchurchelcm.org

*Bringing Christ To All People Today
And Every Day*

GOSPEL: St. Luke 14:1, 7-14

L When invited to a Pharisee's home for a meal, Jesus observes guests jockeying for position at the table. Jesus uses the opportunity to teach His hearers to choose humility rather than self-exaltation. Jesus also makes an appeal for hosts to imitate gracious hospitality to all people in need.

L The Holy Gospel according to St. Luke the 14th Chapter.

C Glory to you, O Lord.

L ¹On one occasion when Jesus was going to the house of a leader of the Pharisees to eat a meal on the sabbath, they were watching him closely. ⁷When he noticed how the guests chose the places of honor, he told them a parable. ⁸"When you are invited by someone to a wedding banquet, do not sit down at the place of honor, in case someone more distinguished than you has been invited by your host; ⁹and the host who invited both of you may come and say to you, 'Give this person your place,' and then in disgrace you would start to take the lowest place. ¹⁰But when you are invited, go and sit down at the lowest place, so that when your host comes, he may say to you, 'Friend, move up higher'; then you will be honored in the presence of all who sit at the table with you. ¹¹For all who exalt themselves will be humbled, and those who humble themselves will be exalted." ¹²He said also to the one who had invited him, "When you give a luncheon or a dinner, do not invite your friends or your brothers or your relatives or rich neighbors, in case they may invite you in return, and you would be repaid. ¹³But when you give a banquet, invite the poor, the crippled, the lame, and the blind. ¹⁴And you will be blessed, because they cannot repay you, for you will be repaid at the resurrection of the righteous."

L The Gospel of the Lord.

C Praise to you, O Christ.

FIRST LESSON: Jeremiah 2:4-13

L The Lord God speaks through the prophet Jeremiah to both the northern kingdom of Israel and the southern kingdom of Judah about how the Lord God was faithful in leading the Hebrew Nation through the wilderness into the promised land. Jeremiah calls upon the heavens to witness the incredible foolishness of the Lord God's people who, under the flawed leadership of priests, rulers, and prophets, willingly abandon the Lord God's life-giving water for leaky cisterns.

L ⁴Hear the word of the LORD, O house of Jacob, and all the families of the house of Israel. ⁵Thus says the LORD: What wrong did your ancestors find in me that they went far from me, and went after worthless things, and became worthless themselves? ⁶They did not say, "Where is the LORD who brought us up from the land of Egypt, who led us in the wilderness, in a land of deserts and pits, in a land of drought and deep darkness, in a land that no one passes through, where no one lives?" ⁷I brought you into a plentiful land to eat its fruits and its good things. But when you entered you defiled my land, and made my heritage an abomination. ⁸The priests did not say, "Where is the LORD?" Those who handle the law did not know me; the rulers transgressed against me; the prophets prophesied by Baal, and went after things that do not profit. ⁹Therefore once more I accuse you, says the LORD, and I accuse your children's children. ¹⁰Cross to the coasts of Cyprus and look, send to Kedar and examine with care; see if there has ever been such a thing. ¹¹Has a nation changed its gods, even though they are no gods? But my people have changed their glory for something that does not profit. ¹²Be appalled, O heavens, at this, be shocked, be utterly desolate, says the LORD, ¹³for my people have committed two evils: they have forsaken me, the fountain of living water, and dug out cisterns for themselves, cracked cisterns that can hold no water.

L Word of God, word of life.

C Thanks be to God.

PSALM: Psalm 81:1, 10-16

I feed you with the finest wheat and satisfy you with honey from the rock. (Ps. 81:16)

¹Sing with joy to ¹ God our strength
and raise a loud shout to the ¹ God of Jacob.
¹⁰**"I am the LORD your God, who brought you out of the ¹ land of Egypt.
Open your mouth wide, and ¹ I will fill it.**
¹¹Yet my people did not ¹ hear my voice,
and Israel would ¹ not obey me.
¹²**So I gave them over to the stubbornness ¹ of their hearts,
to follow their ¹ own devices.**
¹³Oh, that my people would lis- ¹ ten to me,
that Israel would walk ¹ in my ways!
¹⁴**I would quickly sub- ¹ due their enemies
and turn my hand a- ¹ gainst their foes.**
¹⁵Those who hate the LORD would ¹ cringe in fear,
and their punishment would ¹ last forever.
¹⁶**But I would feed you with the ¹ finest wheat
and satisfy you with honey ¹ from the rock."**

SECOND LESSON: Hebrews 13:1-8, 15-16

L The conclusion of the letter to the Hebrews contains teachings for the conduct of a holy life, all of which are shaped by God our Father's love toward us in His Son Jesus Christ.

L ¹Let mutual love continue. ²Do not neglect to show hospitality to strangers, for by doing that some have entertained angels without knowing it. ³Remember those who are in prison, as though you were in prison with them; those who are being tortured, as though you yourselves were being tortured. ⁴Let marriage be held in honor by all, and let the marriage bed be kept undefiled; for God will judge fornicators and adulterers. ⁵Keep your lives free from the love of money, and be content with what you have; for he has said, "I will never leave you or forsake you." ⁶So we can say with confidence, "The Lord is my helper; I will not be afraid. What can anyone do to me?" ⁷Remember your leaders, those who spoke the word of God to you; consider the outcome of their way of life, and imitate their faith. ⁸Jesus Christ is the same yesterday and today and forever. ¹⁵Through him, then, let us continually offer a sacrifice of praise to God, that is, the fruit of lips that confess his name. ¹⁶Do not neglect to do good and to share what you have, for such sacrifices are pleasing to God.

L Word of God, word of life.

C Thanks be to God.



FINANCIAL HIGHLIGHTS for 8/31/25 BULLETIN

	<u>Operating Funds</u>
Balance @ 01/01/25	\$ 90,689
YTD Income	\$ 247,865
YTD Expenses	\$ 242,697
Balance @ 8/24/2025	<u>\$ 95,857</u>

Offering for 8/24/2025

Operating Fund	\$ 2,687
Loose	\$ 24
Mortgage Fund	\$ 550

Designated Giving:

- Food For The Poor	\$ 100
- Salvation Army	\$ 40
- Lutheran World Relief	\$ 15
- ELCM Missions	\$ 15
- Fellowship	\$ 11
- Feed My Starving Children	\$ 2,340
- Worship & Music - Broadcasting Equipment	\$ 140

Total Offering	<u>\$ 5,922</u>
-----------------------	------------------------

FM SC Net Fundraising for 2026 Pack:	\$ 27,875
---	------------------

Mortgage Debt Balance as of 8/15/2025	\$ 817,367
--	-------------------

2025 Annual Giving Sustained Increase-31 Giving Units, Total	\$ 31,341
---	------------------

Note: If anyone would like further details on Church financials, please see Barb LeFevre, Treasurer.

CHURCH INFORMATION & EVENTS-August 31, 2025

Meetings—Monday, September 1—**OFFICE CLOSED**, Tuesday, September 2—Worship & Music—11am, Pastor's Bible Study—2pm, Thursday, September 4—Finance—10am, Friday, September 5—FMSC—1pm. Michele Harney, 352-307-6900.

Hearing Aid Devices—We have Blue Tooth and T Coil. In case your connection isn't working we have some really nice headphones you can use. Joe Pence, Facilities Manager, 352-307-6900.

Feed My Starving Children—The net proceeds collected to date are \$27,895 towards our January 2026 goal of \$35,000 goal. Mark Ferrera, FMSC Chair, 407-616-1576.

2025 UPCOMING EVENTS AT CLC



Children & Youth Ministry



*Prayer Shawl
BP CLINIC*

OTHER CLC EVENTS

Blood Mobile—Sunday, September 7th, 8-12:30pm

Spaghetti Dinner w/Dessert Sale & Auction, Friday, September 19, Carry Out 4:30 Eat In 5pm \$15 for 1 \$25 for 2 (FMSC)

Scooter the DJ—Saturday, September 20, 6-9pm, American Legion, Tickets \$10 (FMSC)

Joyful Praise Quartet—Sunday, September 21, 3:30pm (FMSC)

G.I.F.T. Ministry Event—Saturday, September 27-3-6 pm (Youth Ministry)

Ice Cream Social & Juke Box Bingo—Sunday, October 5, 1pm (FMSC)

Halloween Boo Fest—Saturday, October 18, 1-6pm (Youth Ministry)

Moonlighters Concert—Sunday, October 26, 3pm (snacks/beer/wine) (FMSC)

Blood Mobile—Sunday, November 2, 8-12:30pm

Social & Pastor Derrel/Elvis— Sunday, November 2 at 1pm (FMSC)

Joyful Praise Quartet—Sunday, November 9 at 3:30pm (FMSC)

Putt Putt Golf—Thursday, November 13 at 3pm, Lunch to follow (FMSC)

Thanksgiving Party—Saturday, November 22—Set Up—1pm, Party—3-6pm (Youth Ministry)

Social & Juke Box Bingo—Sunday, Sunday, December 7 at 1pm (FMSC)

Christmas with Santa & Pizza—Saturday, December 20 from 1-6pm (Youth Ministry)

Recurring Monthly Events for 2025:First Sunday of Every Month—
Second Sunday of Every Month, Third Sunday of Every Month—BP
Check—10am—Library, Fourth Sunday of Every Month -

Second Wednesday—Prayer Shawl Meeting—11:30am

CONTACTS

G.I.F.T. Minister—Skyler Forsythe,
352-299-5471

Family Ministers—Ashley Runyon, 980
-925-9959

Medical & Prayer Shawl, Darlene
Baney, Coordinator, 419-367-0373.

FMSC, Mark Ferrera,
Chair, 407-616-1576

Fellowship—Kay Bertzyk, 352-245-
0346 or Joe Capelli, 352-445-2616,
Co Chairs.

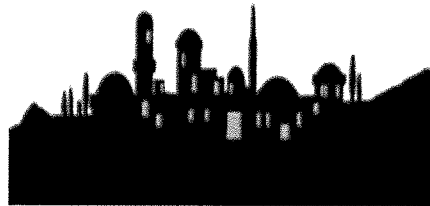
CHURCH INFORMATION & EVENTS CONTD.

Prayer Shawls-On the window side of the Fellowship Hall there are Prayer Shawls ready to be given to people who you feel might like to wrap themselves in Prayer. Please feel free to take one. Just let us know where you sent it. We need more shawls. Please join the Prayer Shawl Meeting the 2nd Wednesday of the month at 11:30am. to help make shawls. **Darlene Baney, Coordinator, 419-367-0373.**

Cub Scout Troop 42-Cub Scout Pack 42 resumed meeting on Monday nights at 6:30 pm. Cub Scout Pack 42 is having School Night for Scouting at Weirsdale Elementary School on Thursday night August 28 and at Harbour View Elementary School on Wednesday night September 10th. The Pack Committee continues to meet on the second Thursday night of the month at 6:30 pm at Chtist Lutheran Church." **Joel Best, Coordinator, 321-439-1096.**

Cross Makers-We need the small yarn crosses. If you need supplies see Michele in the office. **Michele Harney, Coordinator, 325-307-6900**

Walk to Bethlehem-Let's arrive in Bethlehem on Christmas Day. If we all join in the 2929 miles is easy, of course that does not include the ocean miles! Along the way we will learn about other countries and cultures. Sign up sheet and upcoming info are on the table in Fellowship Hall. **Darlene Baney, Coordinator, 419-367-0373.**



Live Plant Garden-The calendar has openings for IMO/IHO Live Plant Gardens. Please sign up for available dates in the Fellowship Hall. **Michele Harney, Parish Admin. Minister, 352-307-6900.**

Phil's Friends-If someone you know has cancer, volunteers in our Hope Centers create and assemble hopeful care packages with comforting items that our friends with cancer need and enjoy. **Linda Scholfield, Coordinator, 352-307-3063.**

COLLECTIONS

Cell Phones-We will still be collecting cell phones. They are taken to Interfaith. **Michele Harney, Parish Administration Minister, 352-307-6900.**

Domestic Violence Center (C.A.S.A.)-We are collecting items at this time. They need Cleaning Supplies, Hygiene Items, Diapers and Wipes, Paper Towels, Paper Napkins & Toilet Paper. Clean and like new condition business attire is also needed. **Cindy Kelly, Coordinator, 440-221-4027.**

Hands of Mercy Everywhere-Needed: Paper Towels, Paper Napkins & Toilet paper. **Cindy Kelly, Social Ministry Chair, 440-221-4027.**

St. Theresa Roman Catholic Church Food Pantry-Thank you for continuing to donate. Keep those donations coming. Non-perishable supplies are always needed. Be sure to check the expiration date. Questions call **Pastor Dave Connell, 352-307-6900.**

Interfaith Shower Ministry in Ocala-for the homeless. We collect supplies: bath towels and wash cloths, men's socks and underwear, personal and full size shampoo, conditioner, body wash, soap, deodorant, tooth brushes, and tooth paste, and men's shoes. **Susan Blusewicz, Interfaith Shower Ministry Coordinator, 352-674-9434.**

Interfaith Free Clinic Medical Center- needs any Over The Counter medicines that are **NOT** opened and **NOT** expired. Cold medicine, cough drops, regular aspirin and low dose aspirin are needed too. **NO RX MEDS.** **Michele Harney, Parish Administration Minister, 352-307-6900.**

We acknowledge a gift to Feed My Starving Children:

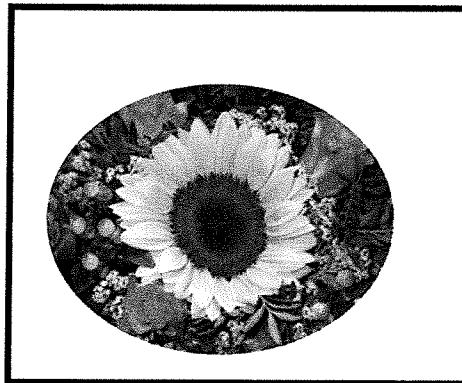
In Memory Of: Nick Fischer
By: Jean Fischer (wife)

We Acknowledge a gift to the Mortgage Fund:

In Honor Of: Darlene Baney
By: Carolyn Wright

**The Live Plant Garden Is Given:
To the Glory of God
&**

In Memory Of: Jim Dalrymple
By: Kathy Dalrymple (wife)



We express Christian Sympathy to the family and friends of:



Diana Riffle-Parishioner Member Vicky Lotz's friend not on our prayer list with terminal cancer and in Hospice care at home died.

Cards to:

Rich Riffle & Family-7233 Cobiack Drive, St., James City, FL 34491

John & Vicky Lotz-10736 SE 178th Street, Summerfield, FL 34491



Ron Blake- CLC Parishioner Member's Celebration of Life is on Friday, November 28 at 1pm at CLC.

PRAYERS

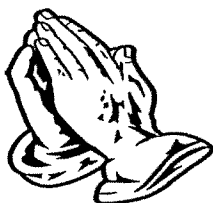
Pray - Council, Ministry Team Leaders / Teams, and Parishioners - Today for: Dotty Smith; Steve & Ann Smith; Louise Soltys; Randy & Rosie Specht; Mike & Pam Stell; Charlie Stinson; Tom & Bonnie Taylor; Chuck & Mary Thorson; Art & Elsie Tibaldi; Terry & Rose Townsend; and all baptized, confirmed, married, memorialized, new parishioners, and all at Christ Lutheran Church.

Give Thanks - Healing: No one.

Pray - Parishioners (short term): Sandie Capelli (back spinal discs cyst removal repair surgery 9/16 - Shands Hosp.); Martha Fernez (facial nose squamous cancer removal repair surgery rehab; radiation therapy rehab & skin graft plastic repair surgery pending); Ken Geach (both legs cath rehab; back spinal discs pain medication therapy rehab); Jim Hopper (internal cancer next steps pending); Earl Howell (fractured tailbone & 2 pelvis fractures health issues rehab - Freedom Pointe Rehab # 100); Ed Israel (right shoulder pain MRI test results w/orthopedic Dr. pending); Dick Knight (back cyst recurrence removal repair surgery rehab); Larry Lee (neck spinal discs pain repair surgery next steps w/surgeon Dr. pending; 2nd opinion w/another surgeon Dr. 9/23 - Shands Hosp.); Lu Lickas (heart blood clot filter insertion surgery rehab); Susan Long (right elbow & internal health issues next steps w/orthopedic Dr. 9/18); John Lotz (internal health issue repair surgery 9/18 - W. Marion Comm. Hosp.); Christine Messersmith (fractured pelvis health issues rehab - Freedom Pointe Rehab # 154); Frank Neumann (right knee replacement repair surgery pending); Perry Olyer (back spinal discs pain next steps w/surgeon Dr. pending); Custer Redman (add'l internal cancer medication rehab); Ashley Runyon (left wrist carpal tunnel repair surgery rehab; internal non-cancer health issue repair surgery 12/1 - Moffitt Cancer Center); John Simmons (post-previous surgeries chest pain scar tissue removal repair surgery & add'l incision multiple area infections & 8 add'l infection removal & repairs surgeries health issues rehab - Select Specialty Hosp. # 205); Tom Taylor (add'l ongoing internal health issues rehab - Bridgewater Rehab # 527); and Carolyn Wright (heart health issues tests results w/cardiologist Dr. 9/5).

Pray - Parishioners (long term - hospital): No one.

Pray - Parishioners (long term - Hospice): No one.



Attendance: 9am: 77
10:30am: 44 Total: 121
YouTube: 32

LESSONS FOR NEXT WEEK
Jeremiah 18:1-11
Psalm 139:1-6, 13-18
Philemon 1-21
Gospel-St. Luke 14:25-33

2026 Christ Lutheran Church Estimated Giving Form

To help build the 2026 Budget and Forecast, we are asking you to give us an estimate of your Operating Fund and Mortgage Fund contributions for the coming year. This is only an estimate and is NOT a legally binding obligation. If you are uncomfortable turning in a signed form, it is acceptable to submit it unsigned. Please place this form in an envelope and put it in the collection marked "2026 Giving Estimate" or you can mail it to:

Christ Lutheran Church

P.O. Box 693,

Summerfield, FL 34492.

As always, thank you for your continued support and help.

Kay Bertzyk, Financial Secretary (352) 245-0346

Operating Fund Annual Estimate \$ _____

Mortgage Fund Annual Estimate \$ _____

Name or Envelope # (Optional)



2026 Christ Lutheran Church Estimated Giving Form

To help build the 2026 Budget and Forecast, we are asking you to give us an estimate of your Operating Fund and Mortgage Fund contributions for the coming year. This is only an estimate and is NOT a legally binding obligation. If you are uncomfortable turning in a signed form, it is acceptable to submit it unsigned. Please place this form in an envelope and put it in the collection marked "2026 Giving Estimate" or you can mail it to:

Christ Lutheran Church

P.O. Box 693,

Summerfield, FL 34492.

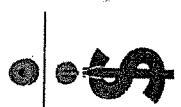
As always, thank you for your continued support and help.

Kay Bertzyk, Financial Secretary (352) 245-0346

Operating Fund Annual Estimate \$ _____

Mortgage Fund Annual Estimate \$ _____

Name or Envelope # (Optional)



Stewardship Principle No. 1 - Respond Gratefully: Respond gratefully to what God has first given us. All that we do is a response to God's grace. Everything we are, have, and use comes from God. Best of all, God gives the gift of Jesus Christ and the community of believers. It all begins with God. Our confession of faith in Jesus Christ as our Lord and Savior is not of our doing. Grateful stewards put God first.

"but they gave themselves first to the Lord." 2 Corinthians 8:3

Stewardship Principle No. 2 - Sacrifice Proportionately: Sacrifice proportionately as Christ sacrificed for us. For our sake Jesus gave up everything to make us rich through the cross and the resurrection. We are called to sacrifice so others may share in God's word and blessings.

"they gave according to their means, and even beyond their means." 2 Corinthians 8:3

Stewardship Principle No. 3 - Give Willingly: Give willingly as moved by The Holy Spirit. We have been prepared to give of ourselves. We give our time, talents, and resources freely.

"For, as I can testify, they voluntarily gave" 2 Corinthians 8:3

Stewardship Principle No. 4 - Share Abundantly: Share abundantly as we have received. The purpose of these gifts is for the good of the community of God. We give to build up the body of Christ. We use and share our gifts for the benefit of all.

"and God is able to provide you with every blessing in abundance, so that by always having enough of everything, you may share abundantly in every good work" 2 Corinthians 8:3

Stewardship Principle No. 5 - Give Proportionately: Give proportionately is our way of giving in relation to our abundance. We are to give according to our "means", not according to an income or a budget.

"If the eagerness is there, the gift is acceptable according to what one has -- not according to what one does not have." 2 Corinthians 8:12

Stewardship Principle No. 6 - Commit Intentionally: Commit intentionally means making a statement about your intent and following through. As members in the Body of Christ, we are asked to make a commitment of our time, talents, and resources as a faithful response to God and as a statement of support of God's work.

"arrange in advance for the bountiful gift that you have promised." 2 Corinthians 8:12

Stewardship Principle No. 7 - Contribute Regularly: Contribute regularly means practicing our stewardship on a daily basis. By doing so this become a lifestyle.

"On the first day of every week, each of you is to put aside and save whatever extra you earn." 1 Corinthians 16:2

Stewardship Principle No. 8 - Accept A Challenge: Accept a challenge means recognizing the dynamic nature of our faith. As our faith grows so will our blessings and our responsibilities.

"... the one who sows sparingly will also reap sparingly, and the one who sows bountifully will also reap bountifully" 2 Corinthians 9:6

Stewardship Principle No. 1 - Respond Gratefully: Respond gratefully to what God has first given us. All that we do is a response to God's grace. Everything we are, have, and use comes from God. Best of all, God gives the gift of Jesus Christ and the community of believers. It all begins with God. Our confession of faith in Jesus Christ as our Lord and Savior is not of our doing. Grateful stewards put God first.

"but they gave themselves first to the Lord." 2 Corinthians 8:3

Stewardship Principle No. 2 - Sacrifice Proportionately: Sacrifice proportionately as Christ sacrificed for us. For our sake Jesus gave up everything to make us rich through the cross and the resurrection. We are called to sacrifice so others may share in God's word and blessings.

"they gave according to their means, and even beyond their means." 2 Corinthians 8:3

Stewardship Principle No. 3 - Give Willingly: Give willingly as moved by The Holy Spirit. We have been prepared to give of ourselves. We give our time, talents, and resources freely.

"For, as I can testify, they voluntarily gave" 2 Corinthians 8:3

Stewardship Principle No. 4 - Share Abundantly: Share abundantly as we have received. The purpose of these gifts is for the good of the community of God. We give to build up the body of Christ. We use and share our gifts for the benefit of all.

"and God is able to provide you with every blessing in abundance, so that by always having enough of everything, you may share abundantly in every good work" 2 Corinthians 8:3

Stewardship Principle No. 5 - Give Proportionately: Give proportionately is our way of giving in relation to our abundance. We are to give according to our "means", not according to an income or a budget.

"If the eagerness is there, the gift is acceptable according to what one has -- not according to what one does not have." 2 Corinthians 8:12

Stewardship Principle No. 6 - Commit Intentionally: Commit intentionally means making a statement about your intent and following through. As members in the Body of Christ, we are asked to make a commitment of our time, talents, and resources as a faithful response to God and as a statement of support of God's work.

"arrange in advance for the bountiful gift that you have promised." 2 Corinthians 8:12

Stewardship Principle No. 7 - Contribute Regularly: Contribute regularly means practicing our stewardship on a daily basis. By doing so this become a lifestyle.

"On the first day of every week, each of you is to put aside and save whatever extra you earn." 1 Corinthians 16:2

Stewardship Principle No. 8 - Accept A Challenge: Accept a challenge means recognizing the dynamic nature of our faith. As our faith grows so will our blessings and our responsibilities.

"... the one who sows sparingly will also reap sparingly, and the one who sows bountifully will also reap bountifully" 2 Corinthians 9:6



Join us for "Joyful Praise Quartet!"
High energy, contemporary Gospel
Music!

Sunday, September 21
3:30 pm in the Sanctuary
(Free Will Offering-Supporting FMSC
& the Quartet.)

See you there!

**Questions: Pastor Dave, 352-804-
3054.**



Join us for "Joyful Praise Quartet!"
High energy, contemporary Gospel
Music!

Sunday, September 21
3:30 pm in the Sanctuary
(Free Will Offering-Supporting FMSC
& the Quartet.)

See you there!

**Questions: Pastor Dave, 352-804-
3054.**

SPAGHETTI DINNER

Fundraiser for Feed My Starving Children

Join us on Friday, September 19 at 5pm
to dine-in and 4:30pm to carry out.

Dinner includes Spaghetti, Meat Balls,
Salad, Garlic Bread, Dessert (\$3) and a
Drink! Red wine \$3 donation.

There is also a dessert auction.

Tickets on sale in the Narthex. Bring a
friend. Get your ticket quick before they
sell out. \$15 for 1, \$25 for 2.

Questions:

Mark Ferrera, FMSC Chair

407-616-1576



SPAGHETTI DINNER

Fundraiser for Feed My Starving Children

Join us on Friday, September 19 at 5pm
to dine-in and 4:30pm to carry out.

Dinner includes Spaghetti, Meat Balls,
Salad, Garlic Bread, Dessert (\$3) and a
Drink! Red wine \$3 donation.

There is also a dessert auction.

Tickets on sale in the Narthex. Bring a
friend. Get your ticket quick before they
sell out. \$15 for 1, \$25 for 2.

Questions:

Mark Ferrera, FMSC Chair

407-616-1576



SCOOTER THE DJ

Fundraiser for Feed My Starving Children

Join us on Saturday, September 20 at 6pm for a night of music and dancing at the American Legion Post 347, 699 W. Lady Lake Blvd. Lady Lake, FL 32159. Cash Bar and Snacks available for purchase. Tickets on sale in the Narthex. Bring a friend. Get your ticket quick before they sell out. \$10 per person.

Questions:

Mark Ferrera, FMSC Chair

407-616-1576



SCOOTER THE DJ

Fundraiser for Feed My Starving Children

Join us on Saturday, September 20 at 6pm for a night of music and dancing at the American Legion Post 347, 699 W. Lady Lake Blvd. Lady Lake, FL 32159. Cash Bar and Snacks available for purchase. Tickets on sale in the Narthex. Bring a friend. Get your ticket quick before they sell out. \$10 per person.

Questions:

Mark Ferrera, FMSC Chair

407-616-1576



Live Oaks Community Church

2025 Meal Pack

EVENT-Feed My Starving Children

LOCATION-Live Oaks Community Church

12070 CR 103

Oxford, FL 34484

DATES-Tuesday, September 9, Wednesday, September 10 & Thursday, September 11

TIMES-Tuesday-September 9-12-2pm, 3-5pm,

Wednesday-September 10-9-11am, 12-2pm & 3-5pm

Thursday, September 11-9-11am, 12-2pm, & 3-5pm

To Sign Up:

Contact Pastor Jim Erb: 815-541-0788 or email him at revjerb51@gmail.com

Or

Go to this website:

[https://www.fmssc.org/volunteer-listing/?](https://www.fmssc.org/volunteer-listing/?search_term=34491&search_start=2025-08-01&search_end=2025-09-30&miles=25&chosen_mode=Near%20Location&users_zip=32812)

[search_term=34491&search_start=2025-08-](https://www.fmssc.org/volunteer-listing/?search_term=34491&search_start=2025-08-01&search_end=2025-09-30&miles=25&chosen_mode=Near%20Location&users_zip=32812)

[01&search_end=2025-09-30&miles=25&chosen_mode=Near%](https://www.fmssc.org/volunteer-listing/?search_term=34491&search_start=2025-08-01&search_end=2025-09-30&miles=25&chosen_mode=Near%20Location&users_zip=32812)

[20Location&users_zip=32812](https://www.fmssc.org/volunteer-listing/?search_term=34491&search_start=2025-08-01&search_end=2025-09-30&miles=25&chosen_mode=Near%20Location&users_zip=32812)

Or

Put info in the Offering Plate for Pastor Dave to sign you up. Be sure all info is there including your full name, email address, phone number and circle the dates and times you are signing up for.



Shepherd's Lighthouse

5930 SE Robinson Rd, Belleview, FL 34420

Phone: (352) 347-6575

July is Hurricane Supplies month at Shepherd's Lighthouse. Help us prepare our shelter and affordable housing options for any weather events that may occur.

We need the following:

- Bottled water
- Non-perishable canned goods
- Batteries
- Flashlights/Solar Lights
- Paper towels/toilet paper/sanitary needs
- 1st Aid supplies
- Baby and children supplies (diapers, bottles, baby food and formula)
- Tarps
- Electronics (weather radios and chargers)

To donate, you can drop them off at my house (call Shepherd's Lighthouse for number) or you can take them to the Lighthouse at 5930 SE Robinson Road in Belleview.

Thank you for your support!

Kathie Niesen, CMP KMN Meetings and Events, 352-347-6575

Pastor Dave Connell, Board Member, 352-307-6900.



Shepherd's Lighthouse

5930 SE Robinson Rd, Belleview, FL 34420

Phone: (352) 347-6575

July is Hurricane Supplies month at Shepherd's Lighthouse. Help us prepare our shelter and affordable housing options for any weather events that may occur.

We need the following:

- Bottled water
- Non-perishable canned goods
- Batteries
- Flashlights/Solar Lights
- Paper towels/toilet paper/sanitary needs
- 1st Aid supplies
- Baby and children supplies (diapers, bottles, baby food and formula)
- Tarps
- Electronics (weather radios and chargers)

To donate, you can drop them off at my house (call Shepherd's Lighthouse for number) or you can take them to the Lighthouse at 5930 SE Robinson Road in Belleview.

Thank you for your support!

Kathie Niesen, CMP KMN Meetings and Events, 352-347-6575

Pastor Dave Connell, Board Member, 352-307-6900.



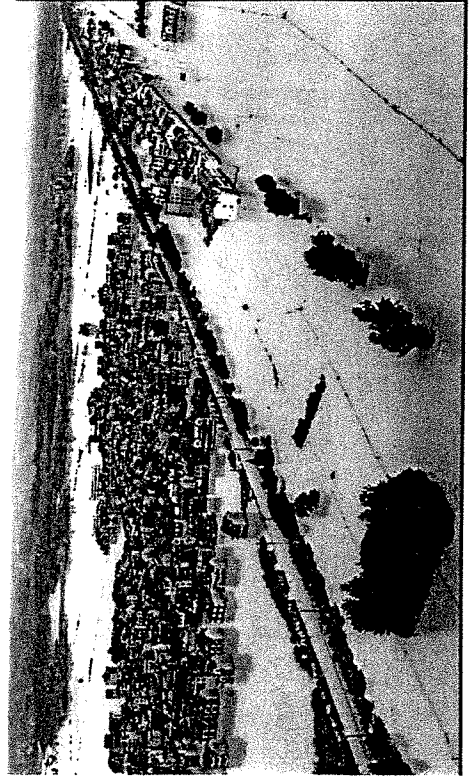
DISASTER RELIEF NUMBERS

National & Worldwide Disasters-People everywhere are in need of HELP. Donations may be made to the following places.

Salvation Army- POB 1959, Atlanta, GA 30301, or thru CLC (be sure to mark envelope clearly):

Lutheran World Relief- 800-597-5972, PO Box 17061, Baltimore, MD 21297.

Samaritan's Purse-mobilizes staff and equipment and enlists thousands of volunteers to provide emergency aid to victims of tornadoes, hurricanes, wildfires, floods, and other natural disasters in the United States. We often stay behind after our initial response to rebuild or restore houses for needy families. PO Box 3000, Boone, NC 28607 828.262.1980



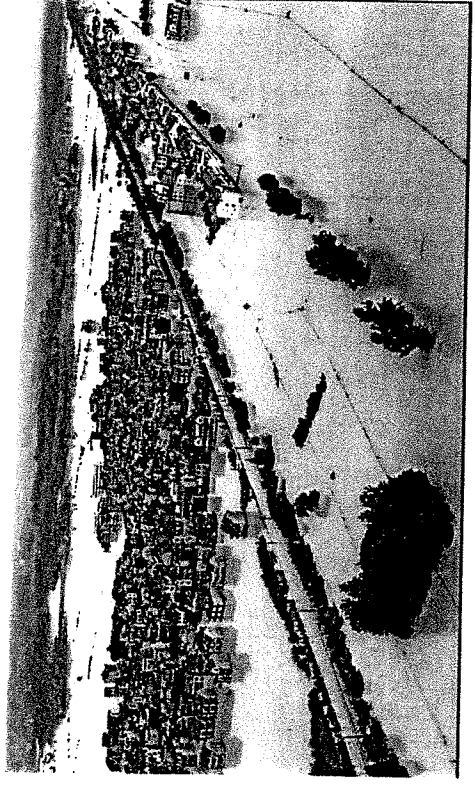
DISASTER RELIEF NUMBERS

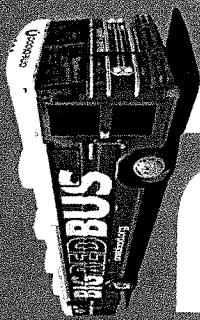
National & Worldwide Disasters-People everywhere are in need of HELP. Donations may be made to the following places.

Salvation Army- POB 1959, Atlanta, GA 30301, or thru CLC (be sure to mark envelope clearly):

Lutheran World Relief- 800-597-5972, PO Box 17061, Baltimore, MD 21297.

Samaritan's Purse-mobilizes staff and equipment and enlists thousands of volunteers to provide emergency aid to victims of tornadoes, hurricanes, wildfires, floods, and other natural disasters in the United States. We often stay behind after our initial response to rebuild or restore houses for needy families. PO Box 3000, Boone, NC 28607 828.262.1980

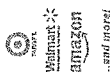




DONATE BLOOD

Donors
Receive

\$20
eGift CARD



- PLUS -



- PLUS -



Christ Lutheran Church
Sunday, September 7
8:00 AM - 12:30 PM

All donors will receive*:

- **\$20 eGift Card**
- **OneBlood T-shirt**
- **Wellness Checkup** including blood pressure, pulse, temperature, iron count, and cholesterol screening.

Fact: Only 3% of those who are eligible actually donate blood.



Appointments are encouraged, please visit **oneblood.org/donate-now** and use sponsor code **10200**

ID REQUIRED

*One offer per donor per donation. No cash value. Not transferable. Gifts may vary. For more information please visit oneblood.org/details.



HYMNS FOR SUNDAY, AUGUST 31

Quiet Moments-Seek Ye First-Duet: Sharon Ellis, Susan Hopper

1. Have You Thanked the Lord ELW 829
2. Lord, Be Glorified ELW 744
3. **Communion:** A. On Eagle's Wings ELW 787 B. Oh, Sing to God
Above ELW 555
4. We All Are One in Mission ELW 576