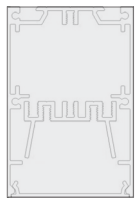


## Snapline R

- Crafted from anodised aluminium extrusion
- Designed for direct surface, wall and suspended fixations
- Integrated LED converter standard, Class II remote options for arduous environments
- Quality 24V LED array achieves pixel free diffusion, \*up to 2000lm/m
- Direct clip fixation for surface mounting on request
- Options available for exterior applications - IP56

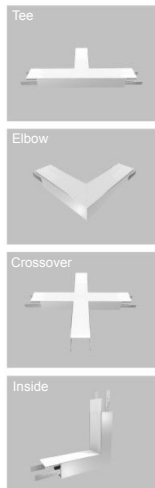
MODEL	LED	LENGTH	COLOUR TEMPERATURE	Lumens*	WATTS
SNR	24V - DC	1000mm	3000K	2000	22W
	Zhaga - CC		4000K		
			5000K		
SNR		2500mm	6000K	2500	55W
SNR		3000mm		6000	66W

### Geometry



75mm

55mm

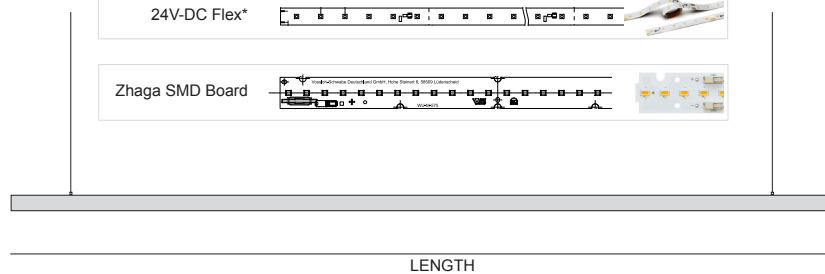
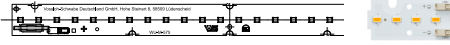


### LED Engine options

24V-DC Flex\*

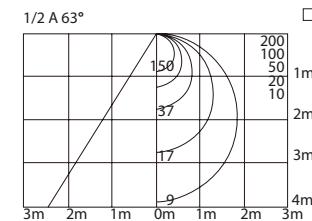


Zhaga SMD Board



### Photometric data

#### Light Intensity distribution



#### Candlepower Distribution

