

# OPERATING THEATRE Equipment Catalogue



An Innovation to assist.

Created by Anton Vick – An unassisted stand-alone project

Au – Phone 0499 350 781

## Contents

1. Baby Warmer – Panda / Giraffe.....	4
2. Baby Shuttle.....	4
3. Bair Hugger.....	4
4. Body-Jet Evo.....	5
5. Core Drill Console.....	5
6. Colposcope.....	5
7. Condoratone / Dyonics Shaver / Smith & Nephew Shaver .....	6
8. Cusa Clarity / Integra Cusa Clarity .....	6
9. Cusa Excel + .....	6
10. CMac.....	7
11. Diathermy Machine.....	7
12. Diathermy Machine (Endoscopy) / ERBE Machine.....	7
13. Endo Stack.....	8
14. Flexi Stack.....	8
15. Fluid Management System - Smith and Nephew.....	8
16. Fluid Management System – FMS Duo .....	9
17. FMS - Fluid Management System – Fluent - Myosure .....	9
18. Foot Pump / Foot Compression Device .....	9
19. Harmonic / Harmonic Scalpel Machine / Ethicon Hamonic .....	10
20. Hover Matt Machine / Pump / Inflator .....	10
21. Light Source (Portable) .....	10
22. Max Fax Headring.....	11
23. Max Fax Trolley / Surgicpro Implant Drill / Piezio Variosurg .....	11
24. Medtronic IPC / Medtronic Drill / Midas Rex .....	11
25. Microscope – ENT Head and Neck .....	12
26. Microscope – ENT / Laser .....	12
27. Microscope – Eyes .....	12
28. Microscope – Gromets .....	13
29. Microscope – Plastics .....	13
30. Myosure (old).....	13
31. Myosure / Fluent / FMS / Fluid Management System / HOLOGIC.....	14
32. Novasure.....	14
33. Paediatric Monitor / Paeds Monitor .....	14
34. Plaster Saw .....	15
35. Robot / da Vinci .....	15
36. SCDS Machine / Leg Compression Device .....	15
37. Smoke Evacuator.....	16
38. Sonopet.....	16
39. Stryker Stack / Mobile Stack .....	16
40. Suction – Portable / Emergency Backup Suction.....	17
41. Thunderbeat – Olympus 400.....	17

<b>42. Thunderbeat - Olympus 410 (Urology)</b> .....	17
<b>43. Tissel / DuploSpray</b> .....	18
<b>44. Tourniquet Machine</b> .....	18
<b>45. Ultrasound</b> .....	18
<b>46. Ultrasound – Urology / BK Medical</b> .....	19
<b>47. Vapr Vue</b> .....	19
<b>48. Versajet</b> .....	19
<b>49. Warewolf</b> .....	20
<b>50. Warmcloud</b> .....	20
<b>51. Xray – Mini C Arm / Orthoscan</b> .....	20
<b>52. Xray / C Arm- (Most commonly used)</b> .....	21
<b>53. *** Development Status</b> .....	21

## 1. Baby Warmer – Panda / Giraffe



### Other Names:

Panda / Giraffe

### Accessories:

Sometimes the Shuttle

### Regular Locations ([search Locations](#))

Theatre 1 / Between 9 & 10 / Theatre 10

Birth Suite

[Home](#)

## 2. Baby Shuttle



### Other Names:

Shuttle for Panda or Giraffe

### Accessories:

Attached Oxygen / Medical Air

### Regular Locations ([search Locations](#))

Outside Theatre 1

Birth Suite 17 / 18

[Home](#)

## 3. Bair Hugger



### Other Names:

????

### Accessories:

Warming Blanket / Cover

### Regular Locations ([search Locations](#))

Main Storeroom

In most Theatres & Anaesthetic Bays

[Home](#)

## 4. Body-Jet Evo



### Other Names:

????

### Accessories:

Cannisters

### Regular Locations (search Locations)

Main Storeroom

[Home](#)

## 5. Core Drill Console



### Other Names:

????

### Accessories:

Foot Pedal (Sometimes)

### Regular Locations (search Locations)

Main Storeroom

In General surgery Theatres inc ENT

[Home](#)

## 6. Colposcope



### Other Names:

????

### Accessories:

????

### Regular Locations (search Locations)

Main Storeroom / Between Theatre 15-16 / Gynae Theatres

[Home](#)

## 7. Condoratone / Dyonics Shaver / Smith & Nephew Shaver



### Other Names:

????

### Accessories:

Sometimes needed - Pedal (oval shaped)

### Regular Locations ([search Locations](#))

Main Storeroom / Theatre 11-12 / Ortho Theatres

[Home](#)

## 8. Cusa Clarity / Integra Cusa Clarity



### Other Names:

Integra Cusa Clarity

### Accessories:

????

### Regular Locations ([search Locations](#))

Between Theatre 3 & 4

## 9. Cusa Excel +



### Other Names:

????

### Accessories:

????

### Regular Locations ([search Locations](#))

Theatre Storerooms

[Home](#)



## 10. CMac



### Other Names:

????

### Accessories:

Blades (Ask what blade is needed)

### Regular Locations (search Locations)

Main Recovery / Airway Room

[Home](#)

## 11. Diathermy Machine



### Other Names:

????

### Accessories:

Diathermy Plate and Cable. Bipolar and Monopolar pedals

### Regular Locations (search Locations)

Main Storeroom or most Operating Theatres

[Home](#)

## 12. Diathermy Machine (Endoscopy) / ERBE Machine



### Other Names:

????

### Accessories:

Diathermy Plate and Cable. Bipolar and Monopolar pedals

### Regular Locations (search Locations)

Endoscopy Department

[Home](#)

## 13. Endo Stack



### Other Names:

????

### Accessories:

????

### Regular Locations (search Locations)

Main Storeroom or Corridor down from Staff Lunch Room

[Home](#)

## 14. Flexi Stack



### Other Names:

????

### Accessories:

????

### Regular Locations (search Locations)

Main Storeroom or Corridor Nere TL Office

[Home](#)

## 15. Fluid Management System - Smith and Nephew



### Other Names:

????

### Accessories:

????

### Regular Locations (search Locations)

Main Storeroom

[Home](#)



## 16. Fluid Management System – FMS Duo



### Other Names:

????

### Accessories:

????

### Regular Locations (search Locations)

Main Storeroom

[Home](#)

## 17. FMS - Fluid Management System – Fluent - Myosure



### Other Names:

????

### Accessories:

????

### Regular Locations (search Locations)

Main Storeroom

Between Theatre 15 & 16

[Home](#)

## 18. Foot Pump / Foot Compression Device



### Other Names:

????

### Accessories:

Pump Tubing

### Regular Locations (search Locations)

Outside all Theatres / In anaesthetic bays / Corridor between C and D Block

[Home](#)

## 19. Harmonic / Harmonic Scalpel Machine / Ethicon Hamonic



### Other Names:

Ethicon Generator

### Accessories:

Device Adaptor

### Regular Locations (search Locations)

Main Storeroom or most Theatres

[Home](#)

## 20. Hover Matt Machine / Pump / Inflator



### Other Names:

????

### Accessories:

Hover Matt

### Regular Locations (search Locations)

Main Storeroom or outside Theatres

[Home](#)

## 21. Light Source (Portable)



### Other Names:

????

### Accessories:

Device Adaptor

### Regular Locations (search Locations)

Main Storeroom or most Theatres

[Home](#)

## 22. Max Fax Headring



### Other Names:

????

### Accessories:

????

### Regular Locations (search Locations)

On shelf / Racks behind theatre 16

On theatre 2's stack

[Home](#)

## 23. Max Fax Trolley / Surgicpro Implant Drill / Piezio Variosurg



### Other Names:

Implant Drill / Console

### Accessories:

????

### Regular Locations (search Locations)

Between Theatre 15 & 16

[Home](#)

## 24. Medtronic IPC / Medtronic Drill / Midas Rex



### Other Names:

????

### Accessories:

????

### Regular Locations (search Locations)

Corridor outside TL Office / Main Store Room /  
ENT Theatre / Store Nere Theatre 5

[Home](#)

## 25. Microscope – ENT Head and Neck



### Other Names:

Zeiss - Tivato 700

### Accessories:

2 x Eye Viewing Attachments

### Regular Locations (search Locations)

Corridor outside TL Office / ENT Theatres

[Home](#)

## 26. Microscope – ENT / Laser



### Other Names:

Zeiss - Tivato 700

### Accessories:

1 x Eye Viewing Attachments

### Regular Locations (search Locations)

Corridor outside TL Office / ENT Theatres

[Home](#)

## 27. Microscope – Eyes



### Other Names:

Zeiss – Opmi Lumera 700

### Accessories:

?????

### Regular Locations (search Locations)

Corridor outside TL Office / Theatre 13 Eyes

## 28. Microscope – Gromets



### Other Names:

????

### Accessories:

????

### Regular Locations (search Locations)

Corridor outside TL Office

[Home](#)

## 29. Microscope – Plastics



### Other Names:

Zeiss – Opmi Vario 700

### Accessories:

????

### Regular Locations (search Locations)

Corridor outside TL Office

[Home](#)

## 30. Myosure (old)



### Other Names:

????

### Accessories:

????

### Regular Locations (search Locations)

Main Storeroom / Nere Gynae Theatre

[Home](#)

### 31. Myosure / Fluent / FMS / Fluid Management System / HOLOGIC

**Other Names:**

Fluent

**Accessories:**

????

**Regular Locations (search Locations)**

Main Storeroom

Between Theatre 15 & 16

[Home](#)

### 32. Novasure

**Other Names:**

????

**Accessories:**

????

**Regular Locations (search Locations)**

Main Storeroom

In General surgery Theatres Ect

[Home](#)

### 33. Paediatric Monitor / Paeds Monitor

**Other Names:**

????

**Accessories:**

Stats probe lead

**Regular Locations (search Locations)**

Equipment store near staff lunchroom

[Home](#)



## 34. Plaster Saw



### Other Names:

????

### Accessories:

????

### Regular Locations (search Locations)

Main Storeroom

In Orthopaedic surgery Theatres Ect

[Home](#)

## 35. Robot / da Vinci



### Other Names:

Robotic Surgery

### Accessories:

2<sup>nd</sup> Surgeon Console / Stryker portable monitor

### Regular Locations (search Locations)

Cold end back corridor

Extra console in cold end meeting room

[Home](#)

## 36. SCDS Machine / Leg Compression Device



### Other Names:

????

### Accessories:

SCD Tubing / SCDS

### Regular Locations (search Locations)

Outside all Theatres / In anaesthetic bays /  
Corridor between C and D Block

[Home](#)

## 37. Smoke Evacuator



### Other Names:

????

### Accessories:

Replacement Filter

### Regular Locations ([search Locations](#))

Main Storeroom / in most theatres (below diathermy machine)

[Home](#)

## 38. Sonopet



### Other Names:

????

### Accessories:

Foot Switch / Insert

### Regular Locations ([search Locations](#))

Neuro / Neuro Store in front of MRI

[Home](#)

## 39. Stryker Stack / Mobile Stack



### Other Names:

????

### Accessories:

????

### Regular Locations ([search Locations](#))

Corridor near staff lunchroom / Main Storeroom / In Theatres

[Home](#)

## 40. Suction – Portable / Emergency Backup Suction



### Other Names:

????

### Accessories:

Suction Cannisters

### Regular Locations (search Locations)

Hot End – Between Theatre 1&2

Hot End – Between Theatre 9&10

Hot End Storeroom

[Home](#)

## 41. Thunderbeat – Olympus 400



### Other Names:

????

### Accessories:

???

### Regular Locations (search Locations)

Main Storeroom / Between Theatre 3 &4 / General surgery theatres

[Home](#)

## 42. Thunderbeat - Olympus 410 (Urology)

Please Insert  
Picture

### Other Names:

????

### Accessories:

???

### Regular Locations (search Locations)

Main Storeroom / Nere Theatre 19 & 20

[Home](#)

## 43. Tissel / DuploSpray



### Other Names:

????

### Accessories:

????

### Regular Locations (search Locations)

Main Storeroom / Between Theatres 3 & 4 /  
Between Theatres 15 & 16

[Home](#)

## 44. Tourniquet Machine



### Other Names:

Torniquet

### Accessories:

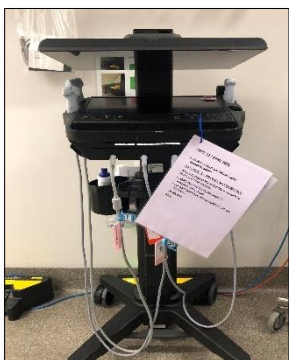
Tourniquet Cuffs / Wraps

### Regular Locations (search Locations)

Main Storeroom / Ortho & General Theatres

[Home](#)

## 45. Ultrasound



### Other Names:

????

### Accessories:

Assorted Probes

### Regular Locations (search Locations)

Ultrasound Storeroom (near Staff lunchroom)  
In all Anaesthetic Bays and Theatres

[Home](#)

## 46. Ultrasound – Urology / BK Medical



### Other Names:

????

### Accessories:

????

### Regular Locations (search Locations)

Neer Theatres 19 & 20 / Main Storeroom

[Home](#)

## 47. Vapr Vue



### Other Names:

????

### Accessories:

Foot Switch

### Regular Locations (search Locations)

Main Theatre Storeroom

[Home](#)

## 48. Versajet



### Other Names:

????

### Accessories:

Foot Pedal

### Regular Locations (search Locations)

Main Storeroom / Neer Theatres 7 & 8

[Home](#)

## 49. Warewolf



### Other Names:

????

### Accessories:

Foot Pedals

### Regular Locations (search Locations)

Main Storeroom / Neer Theatres 11 & 12 and 17 & 18 or other Ortho Theatres

[Home](#)

## 50. Warmcloud



### Other Names:

????

### Accessories:

Warmcloud Inflation Matt

### Regular Locations (search Locations)

Main Storerooms

## 51. Xray – Mini C Arm / Orthoscan



### Other Names:

????

### Accessories:

Radiographer (No one else can operate this)

### Regular Locations (search Locations)

Cold End – Front Corridor

[Home](#)



## 52. Xray / C Arm- (Most commonly used)



### Other Names:

????

### Accessories:

Radiographer (No one else can operate this)

### Regular Locations (search Locations)

Hot End – Near Hybrid and Theatre 5

Cold End – Near Theatre 15 & 16

Cold End – Front Corridor

## 53. \*\*\* Development Status

### Update Log

Content Creator	Version	Status	Date
Anton Vick	4.003	Live - Active and Current	10/06/2025
Anton Vick	4.005	Initial Deployment	13/06/2025

### Access Path

WWW.//

[Home](#)