

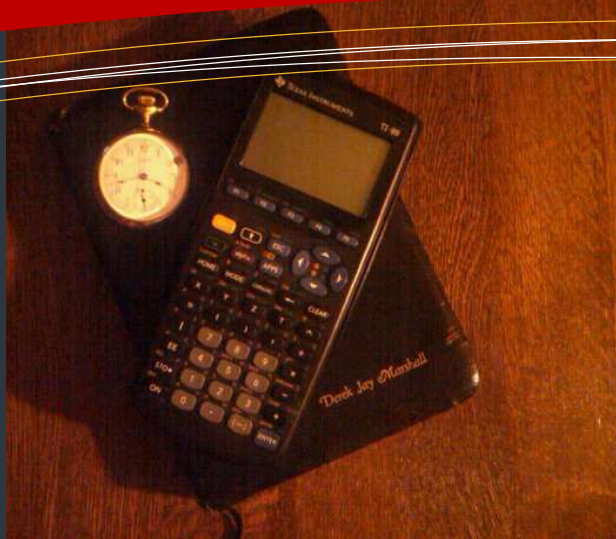
## What is on DEREK'S DESK This Week?

This week should be a real treat because I will share the highlights of a major discovery I made just a few weeks ago: Solomon's Molten Sea.

### Another Example of the Periodic Table of the Elements in the Bible

Last issue I showed a mathematical connection between the Periodic Table of the Elements and the first three days of the Literal Seven-Day Creation described in Genesis. I have discovered several more examples of the Periodic Table pattern in the Word and I am sharing another of these today.

It is important for me to point these examples because the Bible is a source of facts and information from the Creator Himself that is verifiable and directly observable by laypeople and researchers who employ the scientific method.



## this issue

Solomon's Molten Sea: Details? **P.1**

The Molten Sea is a Periodic Table? **P.2**

New Creation Research: Out Front **P.3**

## Solomon's Molten Sea: Details?

When Solomon built his temple, he used his God-endowed wisdom and the talents of others to create a structure so perfect that God Himself occupied it.

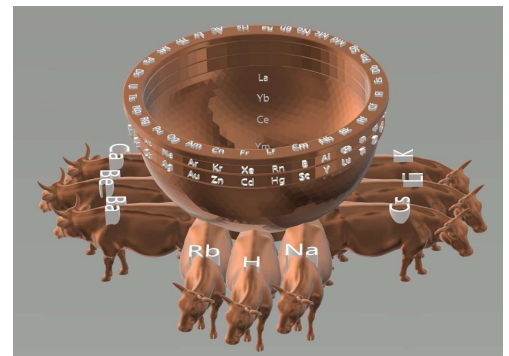
The Account of the building of Solomon's Temple given in 1 Kings 6 and 7 contains a treasure-trove of information valuable to an engineer: i.e. specifications and dimensions of the temple and its contents. I have found whenever dimensions are given of anything in the Bible, they "fit" into a narrative that echoes throughout the scripture across times, across authors.

Whenever a temple is built, it must conform to the Body of Christ, especially if God is going to inhabit it, as He did the Tabernacle and later Solomon's Temple:

1 Cor. 6:19: What? know ye not that your body is the temple of the Holy Ghost which is in you, which ye have of God, and ye are not your own?

The above reference gives the one-to-one correspondence between the Body and the Temple. I have seen this in exquisite detail and will share it in future issues as I build upon this topic.

The Molten Sea was a stopping place for the High Priest to wash his feet and hands before entering the Presence of God, much like the Earth is a stopping



place for us to be cleansed (through Christ) before we enter the Kingdom of God. And it is not hard to understand that the Earth is our temple: A place in which we reside and meet with God.

The Molten Sea has a very simple dimensional description: 10 cubits across, 30 cubits around, five cubits high. Also, there are two bands of "knops" surrounding the vessel just under the fluted rim, the count thereof being "ten in a cubit" for a total of 300 per ring with each ring also being 30 cubits each. The vessel sits upon the backs of 12 cattle—just the count of the cattle, no dimensions. I employ the simple literal dimensions and quantities given in the Word and two calculated "missing" quantities to show something astounding and *never discovered*.



## Principles of New Creation Research

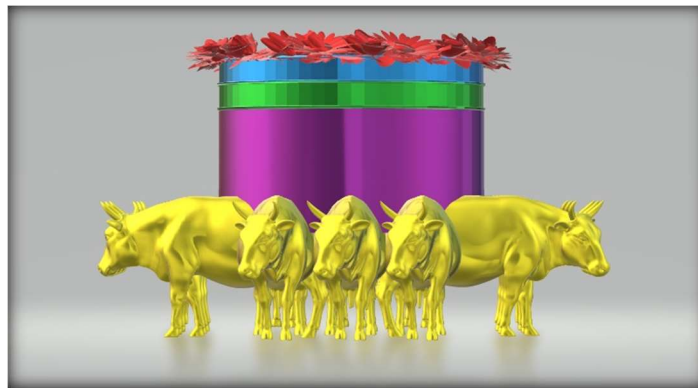
Creation Science research should agree with the Word of God, direct observation, and examples in nature:

The Word of God is the key. I have come to believe that "one cannot know the Creation unless one knows the Creator". I will always provide a Biblical principle for my ideas with references to the applicable passages.

The Bible says that one can come to know Him by observing nature. Therefore, I will always present an accessible example in Nature that illustrates my ideas.

I will always provide references to observations made by scientists who use the scientific method and author textbooks or other peer-reviewed literature.

I know all too well that not everyone likes math, not everyone understands mathematical principles or can "see" math in action around us or in Nature. But the Bible provides dates, numbers, dimensions and mathematical ideas, even *before their time*—*Could Moses have been a mathematician?* Therefore, I will always show the math behind my ideas to respect the qualitative and quantitative information given in Scripture.



Molten Sea Model

A connection between Solomon's Molten Sea (MS) dimensional information and the Periodic Table of the Elements (PTOE) has been found. We see qualitative characteristics of the orbitals that are resident in the MS. Also, the quantities that the Bible gives in 1 Kings 7 are used directly to give the s,p,d,f of the entire PTOE **exactly** to the final element of the PTOE, Element 118, Oganesson.

**The 12 Oxen: YELLOW: The 6 "s-orbitals" of 2 elements each.**

The s-orbitals help make up the valence shell and assist in covalent bonding (electron sharing). These orbitals are spherical in shape and are calculated via quantum mechanics. The shape of the orbital shows where it is most likely to find an electron.

It is interesting to note that s-orbital electrons DO NOT have angular momentum or magnetic moment nodes ( $l=m=0$ ). The bowl is a half-sphere where there will be angular measurements. Since the oxen are separate from the bowl, there are no angular measurements. See the periodic table to the right—The 12 elements highlighted in yellow are filling the s-orbitals.

**The 30 cubits of "Top Knops": BLUE: The 5 "p-orbitals" of 6 each.**

The p-orbitals make up the rest of the valence shell and are instrumental in ionic bonding (electron transfer). These orbitals have l and m values, and therefore have angular occupancies. P-orbitals are always separated by 90°. Since the bowl rests upon the backs of oxen situated at 90°, the oxen may determine where the 0° is on the bowl. The 30 elements highlighted in blue are filling the p-orbitals.

**The 30 cubits of "Bottom Knops": GREEN: The 3 "d-orbitals" of 10 elements each.**

The d-orbitals are key in metallic bonding and help make up the special properties in transition metals. See the 30 elements highlighted in green.

## IS THE MOLTEN SEA A PERIODIC TABLE?

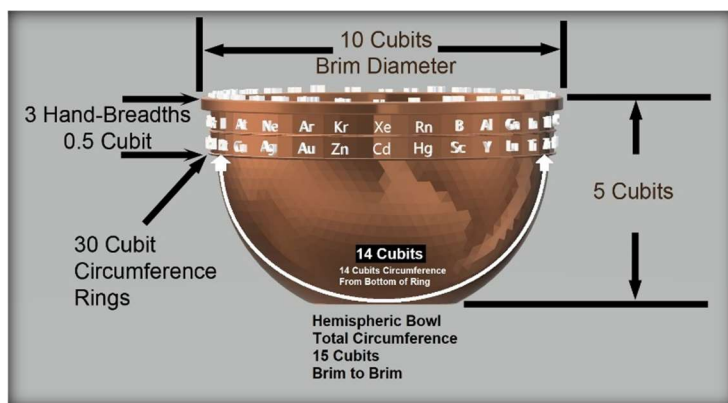
I will compare the Molten Sea dimensions in 1 Kings 7 to The Periodic Table of the Elements.

**The 14 cubits of surface under the knops: PURPLE: The "f-orbital" of 14 elements.**

This f-orbital of the Lanthanides are buried deep below the the valence electrons in the s and p-orbitals. See above that the the first f-orbital is calculated as the circumference of the bowl's depth below the brim and two knop rings, 14 CU. See this orbital highlighted below in light purple.

**The 31.4 cubits of brim: RED: The 32 7<sup>th</sup>-period (unstable, man-made, man-induced) elements.**

The brim is also described in 2 Chron. 4 as having been *worked* into daisy-leaf shapes (the rest of the bowl was cast). The brim was split, irregular material—worked by man. Note that these elements in most cases are man-made and in all cases unstable. **Notice that the entire periodic table is EXACTLY completed with the red elements below ending with 118.**



**Periodic Table of the Elements**

# New Creation Research: Out Front

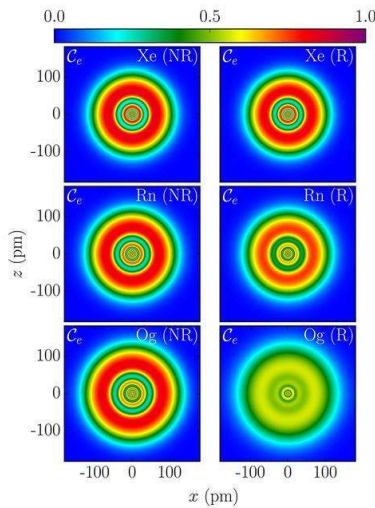
Immense Oganesson Projected to have No Electron Shells

By Philip Ball 9 October 2017

“Theory predicts that element 118 would be surrounded by a smear of electrons rather than have distinct orbitals.”

I found the above article by Philip Ball citing research by theoretical chemist Peter Schwerdtfeger of Massey University in New Zealand, and nuclear physicist Witold Nazarewicz of Michigan State University predicting that Oganesson (Og), Element 118 (Uuo in the periodic table above before it was officially named) will not have distinct electronic orbitals.

They say instead Og/Uuo will have a “smear” of electrons due to relativistic effects. See the picture below, the bottom row, right. The electron occupancies of “Og” are fuzzy.



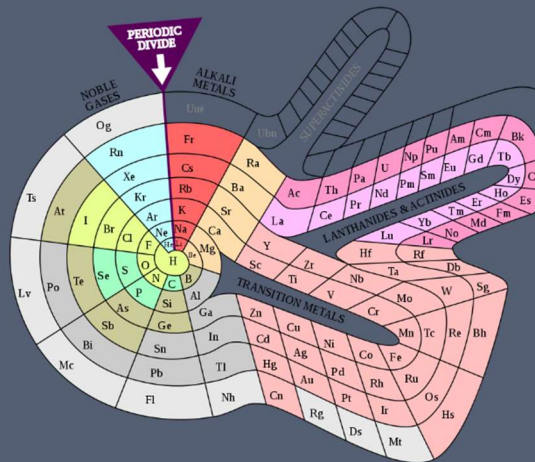
Solomon was a King of Israel 3000 years ago. This is when the Molten Sea was made. Therefore, an iconic structure of the PTOE was available at that time for someone with wisdom to understand.

Additionally, if you look my Molten Sea Model on the previous page, the rim dimension is 31.4 CU, represented by the red elements in Period 7 above. So, we see that the final full cubit 31 for Element 117 Tennessine (Ts/Uus) is there, but we see only 0.4 CU for Oganesson Og/Uuo. I predict something is there, but incomplete. The article I am citing also predicts that the electronic configuration of Og/Uuo will be unique in that it will be missing electron shells.

## This Issue’s Q&A in New Creation Research

**Q: How can a bowl-shape be the same as a Periodic Table?**

A: There are many versions or arrangements of the Periodic Table of the Elements. One example was published in 1964 by Theodor Benfey (see picture to the right). It is a two-dimensional spiral (I like it already) that also includes a “Periodic Divide” which is also seen in the Creation Function as the transition from Night to Day. Benfey’s spiral shows seven rotations, and has a neat “branching” of the transition metals, lanthanides and actinides—Showing that a circular diagram can show more information than a table.



## EYE ON IT Patriarchal Age Decay was Logarithmic

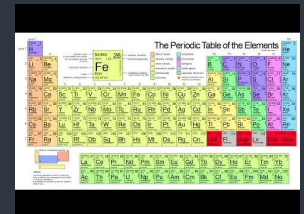
The Biblical patriarchs’ longevity from Noah through Joseph declines by logarithmic curve (exponential decay) given by Lifespan (years) =  $6664 \times e^{-dob/\tau}$  where  $e = 2.718...$  is nature’s constant, and  $dob$  is the patriarchs’ dates of birth since Adam, and  $\tau =$  exponential time constant = 563 years. The equation was obtained by the natural logarithms’ linear regression  $\ln(\text{lifespan}) = 8.804 - 0.00177 \cdot \text{dob}$ . Having an exponential curve brings it in line with my Creation Function.

<https://creationresearch.org/crs-q-abstracts-2016-volume-53-number-3-winter/>

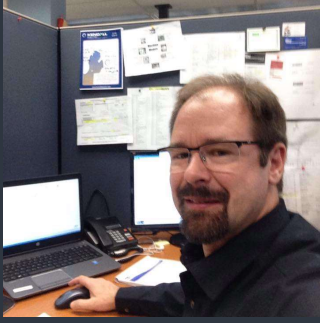
## YOUTUBE Derek’s Picks

Here you will find links to YouTube videos that will give supporting information related to this issue.

## Metals in the Periodic Table



Produced by Doug Sharp and Rich Geer of Revolution Against Evolution (RAE). RAE interviewed me last year about my New Creation work. This is a good companion video to understand this issue.



## Who is Derek?

Derek Marshall of East Lansing, MI is an electrical engineer who holds a bachelor's degree in Physics from Michigan State University. An inventor and former Marine, Derek discovered the Creation Function in 2005 and has applied it to many of the Bible's more difficult topics as well as questions in Modern Physics and Chemistry.

## Upcoming Articles

- **The Periodic Table in Daniel 2**

The Image in Nebuchadnezzar's dream is a surprisingly accurate Periodic Table, as interpreted by Daniel, a science student.

- **Did God Already Tell Us About His Particle?**

The Higgs Boson was predicted by the Creation Function in 2006. Its mass was obtained shortly thereafter using Creation Function Mathematics.

- **Noah's Ark and the Ark Atomic Model**

Noah's Ark is a highly accurate and predictive atomic model. And research is ongoing with no end in sight regarding the exquisite detail of this new discovery in New Creation Research.

## Credits/Links

- **Pictures...**

Molten Sea 3D Image: [CreationFunction.com](http://CreationFunction.com), Derek Marshall

Circular Periodic Table: [www.en.wikipedia.org/wiki/Alternative\\_periodic\\_tables](http://www.en.wikipedia.org/wiki/Alternative_periodic_tables)

- **Articles...**

Oganesson: <https://www.chemistryworld.com/news/immense-oganesson-projected-to-have-no-electron-shells/3008104.article> (Orbital picture included in this link)

**Derek's Desk** Issue 02 Week 13, 2018 Derek J. Marshall (C) 2018 All Rights Reserved



**CreationFunction.com**  
New Creation Research