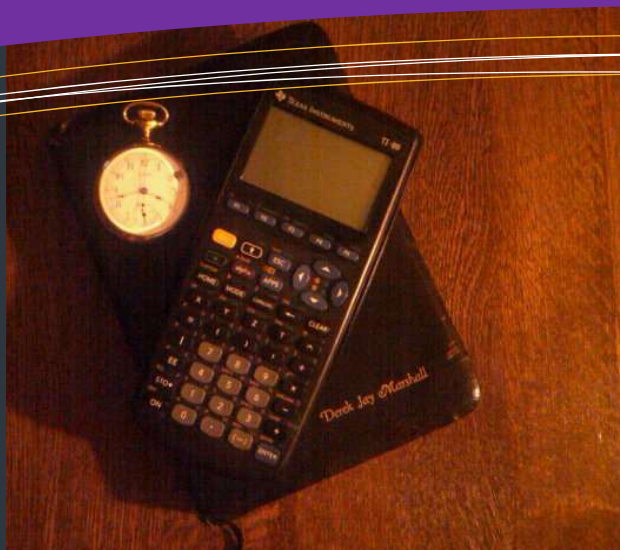


What is on DEREK'S DESK Today?

I found two more symbols in the Bible that relate to my focus on comparing the Atom to the Word of God. The Flying Roll and The Woman in the Ephah in Zechariah 5 are separate visions, but in the same chapter. These images render an exciting mixture of prophecy and numerical correlations to the other iconography in the Bible we have studied.

Another Amazing Example of the Common Numerical Themes in the Bible

Last issue I showed an amazing connection between Noah's and the Periodic Table of the Elements (PTOE). Today I bring you the Flying Roll and the Woman in the Ephah. We see an amazing correlation between the Flying Roll, the Ark Nuclear Model, and prophecy in the Revelation. Later, this correlation is expanded to the Woman in the Ephah, a container for "mixed" grains.



this issue

The Flying Roll in Zechariah 5 **P.1**

The Roll, The Sea, and The Ephah **P.2**

OutFront: Depleted Uranium in Iraq **P.3**

The Flying Roll in Zechariah 5

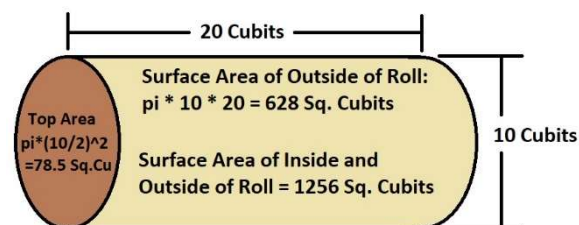
God revealed to Zechariah, a Hebrew prophet, some very unique image. A "flying roll" is a prophetic view of the World's fate during the End Times. This article shows how another of these icons given by God in the Bible have far-reaching significances beyond the immediate storylines.

The account of the Flying Roll of Zechariah given in Zechariah 5 contains a treasure-trove of information valuable to an engineer: i.e. specifications and dimensions of the two-sided roll. I have found whenever dimensions are given of anything in the Bible, they "fit" into a narrative that echoes throughout the scripture across times, across authors.

The Flying Roll in Zechariah 5 was 20 cubits long and a width of 10 cubits. Since the roll is cylindrically-shaped, I can calculate its surface area. This gave an amazing result of 628 Sq. Cubits, which is very close to the Half-Ark Model Frame quark load of 624 (see [DsD 4](#)). When we examine the prophecies, we realize that these two seemingly disparate structures are related.

The Ark was an instrument of God for salvation from judgement. It was Noah's house for over 1 year and became the basis of post-Flood world reconstruction.

The Flying Roll Dimensional Analysis



This roll-shaped object is a decree from God, who is literally installing judgement into the house of the "liar and thief". This is speaking of when the antichrist unlawfully occupies the Temple over the course of 1260 days and lies to humanity. The roll has an inside and an outside. If you calculate the total area of both sides you get 1256 Sq. cubits, which is exactly a full ark after removing the 8-cubit door positioned on the side of the 2nd deck.

So here is the scenario—The Bible says in Rev. 11:2,3 and many other places, that it will take 42 Hebrew months (1260 days) to load 1256 elements of judgement into an antichrist-occupied, wide-open-door Hebrew temple frame measuring 1256 cubital elements.



The Woman's Dimension in the Bible

The Word of God places Woman in a very consistent and sacred place in the World. There are numbers in the Bible that describe the influence of Woman and we will compare these to everyday experience.

We meet Woman in the Garden of as she is created from the Man's rib. The rib of a man is located in the "brass" portion of Man's body (see [DsD 3](#) and Q&A) corresponding to the numbers 29,30. I literally place the foot of woman at this position, as if she is coming from his side.

Micah 4:13 The daughter of Zion having feet of brass.

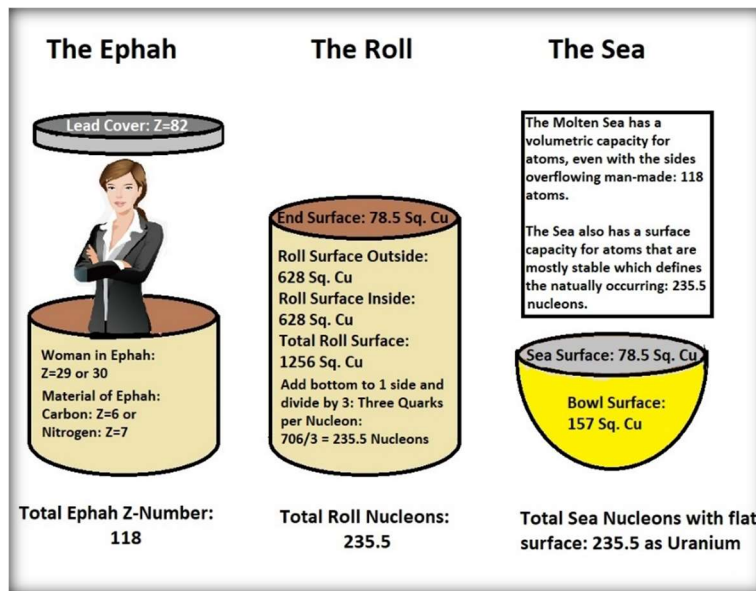
Ex. 38:8 Laver made of woman's brass mirrors (image of Woman)

Rev 12:1 Woman standing on the moon representing "monthly" cycle of around 29-30 days, just like the Moon's orbital cycle.

Also, in Rev. 12:6, Woman is related to this discussion of 1260 days. Before the Second temple in Jerusalem can be falsely inhabited by the antichrist, Holy Jerusalem, aka "The Bride of Christ" Rev. 21:9-10, Micah 4:9-10 must give birth to Christ aka "The High Priest", who escapes. And then she must evacuate her end, the Woman's Court.

So as Satan goes after the Woman in the Temple, she escapes also and is given a precise area in the wilderness to move to while the Tribulation is occurring above.

There is more to Woman's role to be read in upcoming DsD 7.



THE ROLL, THE SEA, AND THE EPHAH

Numerical connections between The Flying Scroll and Ephah described in Zechariah, and The Molten Sea of Solomon's Temple have been found.

The Molten Sea and the Ephah:

The Molten Sea in [DsD 2](#) and the Ephah are both containers. The Molten sea has a circumference of 30 cubits and is made of brass which corresponds to z-numbers 29 and 30.

We have established that the range of Woman is 30 cubits, and in [DsD 2](#), we established that the Brass Sea represented the Earth.

The Ephah is a bushel-basket made to carry mixed grain. It is made of dry organic materials, mostly Carbon corresponding to z-number 6, while the lead cover corresponds to the z-number 82.

This combination of the Ephah, Woman and Lead, or numbers $6+30+82 = 118$ also correlates to the Molten Sea's capacity to hold 118 elements described in [DsD 2](#).

The Roll Form and the Ephah:

Zechariah 5 has two prophecies that are not only related by being in the same chapter, but I have found more correlations. The Roll had interesting dimensions stated as 10 cubits by 20 cubits, the same dimensions as Solomon's Temple Porch (1 Kings 6:3) where the Law was read and later, where Jesus taught in the 2nd Temple. The connection is that this porch is in the Woman's Court.

Another connection is that one side of the roll is 628 cubital elements, meant for Woman's side of the Temple. So, the Roll could be the ephah sealed in lead. Remember from [DsD 4](#) that Lead 208 (Half-Ark) has 624 quarks.

Micah 4:9-10 also correlates the Flying Roll to the Ephah. Once the Woman escapes Holy Jerusalem she goes to the "field" where she is delivered and redeemed in Babylon.

The Zechariah 5:11 prophecy also has the ephah being flown to "Shinar"; an ancient term for Babylon or modern-day Iraq.

The Roll Form and the Molten Sea:

Recall that the Flying Roll cylindrical surface area is $31.4 * 20 = 628$ Sq. cubits. If you take into consideration the area of one end of the roll, i.e. $(3.14 \text{ Cu} * 25 \text{ Cu} = 78.5 \text{ Sq. Cu})$ and add that result to the 628 Sq. Cu you obtain 706.5 Sq. Cu. If you take that as a quark count as we have so far for surfaces and divide by 3, you get 235.5 nucleons, the atomic mass of Enriched Uranium.

You may ask why I am adding an end to the Roll. The roll is an object placed in a house. Just like if you describe a house by its walls, once the walls are filled in, the floor dimensions are defined automatically. So, it is ok for me to consider the floor once the roll is placed. If you read Zech 5:4, it even sounds like something radioactive is being placed in the house.

Now compare also to the Molten Sea half sphere surface area: $(4 * 3.14 * 25/2) = 157 \text{ Sq. Cu}$. Add the surface area of water surface, same as the roll = 78.5 Sq. Cu. Adding $157 + 78.5 = 235.5$ nucleons, again the atomic mass of Enriched Uranium.

OutFront: Depleted Uranium in Iraq

Two related End-Times prophecies in Zechariah 5 may have predicted the air-lifting, large-scale use and proliferation of U238 in Iraq during the Gulf War.

Public Health:

Depleted Uranium

"The U.S. military uses tank armor and some bullets made with depleted uranium (DU) to penetrate enemy armored vehicles and began using DU on a large scale during the Gulf War.

The process of manufacturing enriched uranium from natural uranium used in nuclear reactors or weapons leaves "depleted" uranium. DU has 40 percent less radioactivity, but the same chemical toxicity as natural uranium." Source: U.S. Department of Veterans Affairs



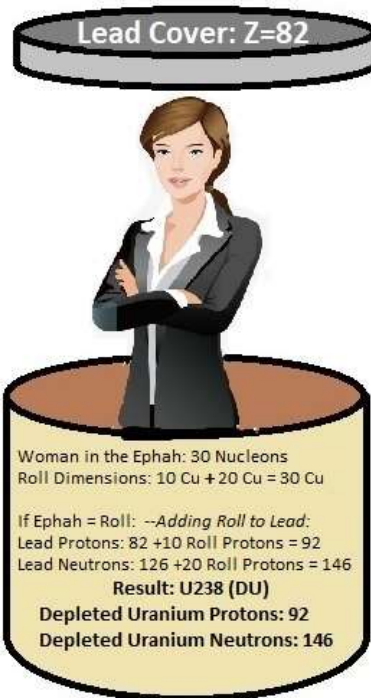
There are four reasons why I believe this prophecy is related to what is going on in Iraq:

1) There is a measuring basket and it has a woman in it. The range of Woman is 30 Cubits as previously discussed. Since the Woman fits inside, I attribute to her an atomic weight of 30. Put the Lead top on the ephah. Add 30 to the atomic weight of Lead and you get U238 aka DU.

2) If the Woman is wrapped in the roll is the same as the Ephah, you get two dimensions 10 and 20 Cubits. If you add 10 protons to Lead, you get Uranium. If you further add 20 Neutrons, you get U238 aka DU.

3) The creation of a wicked seed: The container with the woman inside, fertilized (marked) with the Man's side of the Temple, The Roll. Sealed in Lead and to be planted in Iraq, "This is their resemblance...Wickedness!" a picture of the people during the Tribulation.

4) One woman in the basket, but it takes two women to lift and carry her to "Shinar", which is modern-day Iraq. Uranium happens to be twice the density of Lead, meaning a talent of DU is twice as heavy as that of Lead.

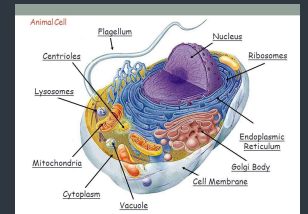


EYE ON IT

Discovery of Design: Bacteria Micro-motors

Donald DeYoung & Derrik Hobbs, 2009, pp 12, 13

"Many microscopic forms of life propel themselves through liquids using protein assemblies called molecular motors. The organisms include certain bacteria and mitochondria, which exist within most living cells. The motor is in the form of a rapidly spinning filament called a flagellum, which functions much like a ship's propeller. A central shaft made of protein material spins as rapidly as 100,00 RPM..."



YOUTUBE

Derek's Picks

The Molten Sea



Produced by Doug Sharp and Rich Geer of Revolution Against Evolution (RAE). RAE interviewed me recently about my New Creation work. This compares the Molten Sea in Solomon's Temple to the PTOE.

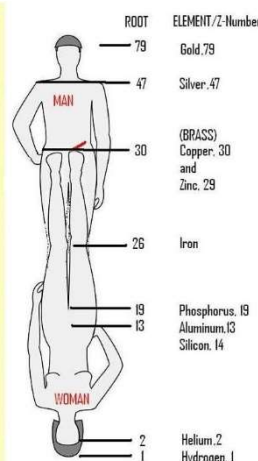
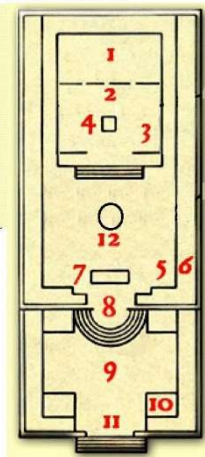
This Issue's Q&A in New Creation Research

Q: Where in the world do you get the dimensions of Woman?

A: We said we meet Woman in the Garden of as she is created from the Man's rib. The rib of a man is located in the "brass" portion of Man's body (see DsD 3) corresponding to the numbers 29,30. If we literally place the foot of woman at this position, as if she is coming from his side where Christ was pierced on the Cross. Interestingly, we see the feet of man when he is born to be coming from the appropriate place of Woman. The legend on the left places Women at the opposite end of the 2nd Temple as the priests and where they served.

Relative Positions of Post-Fall man and Woman in the Creation

1. Holy of Holies
2. Veil (Curtain)
3. Holy Place
4. Altar of Incense
5. Court of Priests
6. Court of Israel
7. Altar of Sacrifice
8. Nicanor Gate
9. Court of Women
10. Wood
11. Gate Beautiful
12. Laver





Who is Derek?

Derek Marshall of East Lansing, MI is an electrical engineer who holds a bachelor's degree in Physics from Michigan State University. An inventor and former Marine, Derek discovered the Creation Function in 2005 and has applied it to many of the Bible's more difficult topics as well as questions in Modern Physics and Chemistry.

Upcoming Articles

- **Derek's Desk Issue 6: The Antediluvian Earth.**

There was a Beginning and an Earth with similar content as today, but vastly different Physics and constituency. This Earth was completely destroyed by the Flood.

- **Derek's Desk Issue 7: The Flood: Wetting the Earth**

There was a universal particle flood and a literal, global water flood. The particle flood portion is commonly referred to as "The Big Bang" and has been mistaken for Origins.

- **Derek's Desk Issue 8: The Flood: Drying the Earth**

The Earth was reborn, and reformed. It is our Modern Cosmology, the Matter, Space, and Time we live in today.

Credits/Links

- **Pictures...**

-The Q&A Temple Diagram is a composite created by Derek of several graphics on the Web in the public domain.

-Woman in ephah: www.pngtree.com

-Animal Cell: www.slideplayer.com

-Depleted Uranium Slide: www.image.slidesharecdn.com/dorman-uranium-101119152211-phpapp02/95/uranium-josh-dorman-9-638.jpg

- **Articles...**

- "Eye on It": *Discovery of Design*, Donald DeYoung & Derrik Hobbs, 2009, pp 12,13

- Public Health: www.publichealth.va.gov/exposures/depleted_uranium

Derek's Desk Issue 05 July, 2018 Derek J. Marshall (C) 2018 All Rights Reserved



CreationFunction.com
New Creation Research