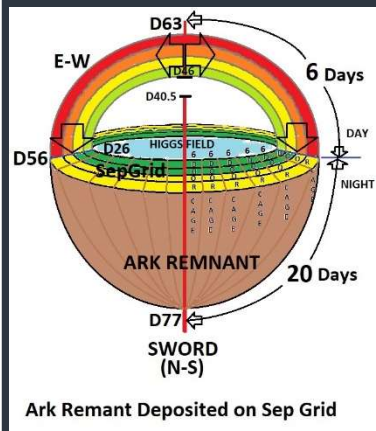


What is on DEREK'S DESK (DSD) Today?

Now that we have a completed Diagram, we can begin to apply the Creation Function (CF) to try to understand the concept of "Geological Time".

Another Example of the Common Numerical Themes in the Bible

Last issue I released brand new findings that the animals featured in prophecy have chromosomal counts that correlate to the important demarcation points given by the Creation and the Flood. Today, I release more new findings that major Geological Time events correlate qualitatively and quantitatively with the events listed in scripture during the Flood.



this issue:

Dinosaurs and Geological Time

Did Animals Leave the Ark Before Noah? **P.1**

Geological Time and The Diagram **P.2**

OutFront: Are Dinosaurs Birds? **P.3**

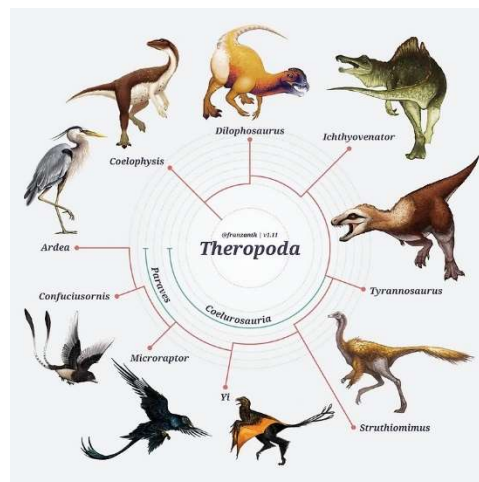
Did Animals Leave the Ark Before Noah?

Introduction: Animals that Leave Ark Early Are Changed.

In previous DsD Issues I have said that Noah's Ark was a temple. Noah and the animals came into the Ark for salvation just as we come to Christ and reside in Him. So, to leave the Ark prematurely is a grave matter. The previous DsD Issue showed that our DNA is mapped out on the Diagram. So, for a creature to leave the Ark prematurely while their DNA is still being dried by God could change the creature's attributes.

After 40 Days, Noah Opens the Window for Bird Season.

The first opportunity for animals to leave the Ark was when Noah opened the window to release two birds. Only one was brought back into the Ark. Eventually the Dove came back with a Good Report, because she was seeking Rest. I believe that the Raven was seeking food. Having found none, it returned and gave a Bad Report, and was not allowed back into the Ark. However, other small animals heard the bad report of how they were going to become food for the larger animals, and became frightened. The Bible does not explicitly say this, but it is a common theme: Numbers 13:31-33.



After the Second Drying Phase, Noah Removes the Hull of the Ark

Gen 8:13 "...Noah removed the covering of the Ark, and looked, and, behold, the face of the ground was dry." This is what the small animals saw also and I believe many departed as Noah slowly, over 56 Days, removed the hull of the Ark as God finished drying the place where the Ark remnant was to imprint. I believe they left because they were told by the Raven that they could be big and that they could eat and not be eaten, if they followed him away from the Ark. This, I believe, was how the dinosaurs came to exist.

After 56 Days with No Hull, The Ark is Emptied:

Gen 8:17 When God finally finished drying the Earth, those animals that left early were turned to stone and frozen in the Earth. God told Noah to come out of the Ark and "bring forth...every living thing THAT IS WITH THEE...". Not all animals Noah had originally were still with him when they were told by God that the Earth was ready to occupy. The problem was that the Earth was already occupied by "wild beasts" and God had to rid the Earth of the satanic occupants via drying.



The Diagram

We see that demarcation points established during the Flood also correspond to geological "Deep Time" boundaries.

The Diagram has 3 complete God-ordained dimensions, all very large logarithmic spirals: The E-W, N-S, and SepGrid. Review DsD7, DsD8, DsD9 for more on The Diagram.

What is important here today is that there are special points on the Diagram established at Creation and the Flood that are meaningful in the physical and spiritual World. It is a new discovery that these points are also shared by the concepts of Deep Time. The following is an overview of these special points from the Day 1 center of the Diagram out:

Day 3: Aka ROOT 19 where the stone hits the Daniel image on the feet. This becomes a mountain (or a stone) that fills the whole Earth. DsD1, DsD3

Day 40-46: The Wilderness. Corresponds to Day 1-6 of the Original Creation now destroyed and dried by God.

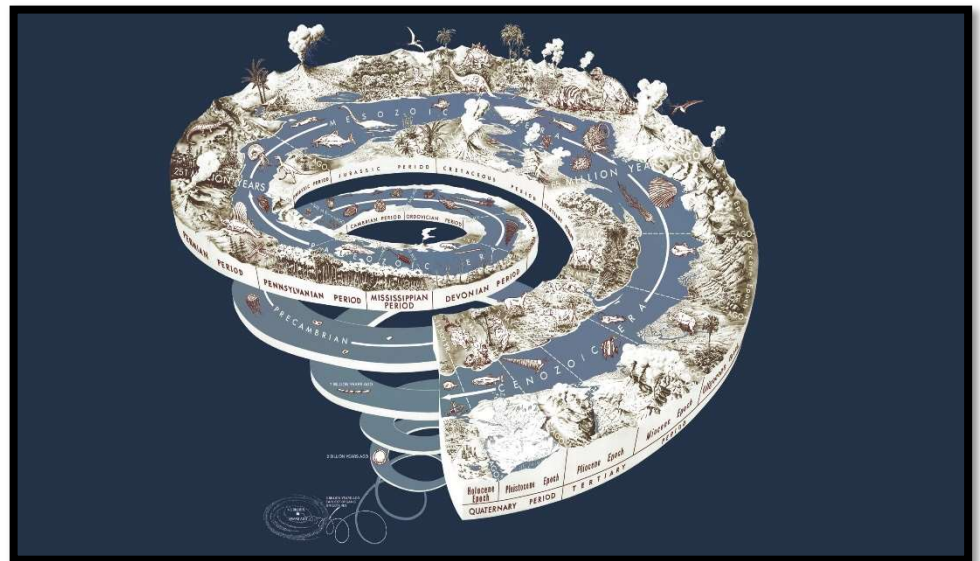
Day 46/47: The "mountain that filled the Earth" is where the Ark landed after 40 Days. DsD7

Day 56/57: The top of the SepGrid established by the Ark Remnant imprinting itself on the Earth. Last Drying Phase, 57 Days. DsD9

Day 63/64: The Ark door and waterline. DsD7

Day 77: The top of the Ark after it lands. The Ark Window. DsD8

Day 110: This comes from the first 150 Days of the Flood after the initial 40 N-S. These 110 days the Ark "went upon the waters". This established 47 Days SepGrid and 63 Days E-W. Border of Heaven.



GEOLOGICAL TIME AND THE DIAGRAM

Radiometric Dating, Noah's Ark and the Diagram:

The origin of the "Deep Time" concept was radiometric dating, the measure of the relative proportions of radioactive isotopes in a sample. However, it is not time we are seeing, instead, very large quantities of atoms. And since Noah's Ark is an atomic model resident in the Diagram, a 3-D logarithmic spiral, we can correlate very large quantities of atoms using the Creation Function.

The Richter Scale: How to Work With Large Numbers:

One example of working with and expressing large variance in quantities is the Richter Scale which is a Base-10 logarithmic scale.

Avogadro's Number and the Final Drying of Earth: SepGrid

Avogadro's Number (AVO) relates the mass of a compound to its much smaller atomic mass. One molecule of water has a mass of 18AMU. Using AVO, we find that one "mole" of water is 18 grams. AVO relates to 54 CF Days. In fact, it also relates Day 3 to Day 56/57, the top of SepGrid and Further relates Day 56 to Day 110.

According to the Creation Function and the Diagram, it has been 23.5 CF Days since the Deep Time's "Beginning of the Universe". Here a few of many examples are given of how this "Deep Time" concept is only a misinterpretation of the evidence.

Day 63 through Day 46 is 65 Million Deep Years, KT Boundary, End of Dinosaurs

A fundamental change has occurred post-Flood in how we count rotations of the spiral on the SepGrid because it now makes a rotation every 365 Days (1 Year). And using the CF computation $\ln(65 \text{ million})$ we get a result of 18 CF rotations. If we go backwards from the Ark Door at NS Day 63 through 18 rotations it takes us through NS Day 46 where the Ark rested. This is the KT Boundary when a "meteor" hit the Earth. If you recall from DsD8 the black bird never returned to the Ark and flew "to and fro" until the waters were dried from the Earth. DsD7 shows that the Raven could have flown all the way down through N-S Day 46.

Day 63 to Day 43 is 500 Million Deep Years, Cambrian Period

Another example is that 500 Million years is 20 CF rotations taking us back to Day 43. This corresponds to Pre-Flood Day 3 of the Original Creation when first life was formed. This is because the Flood added 40 Days to the Original Creation, and I find a correspondence between the 6-Day Creation and Days 40 through 46 Post-Flood.

Day 63 through Day 42 is 4.7 Billion Deep Years, The Beginning of the Solar System:

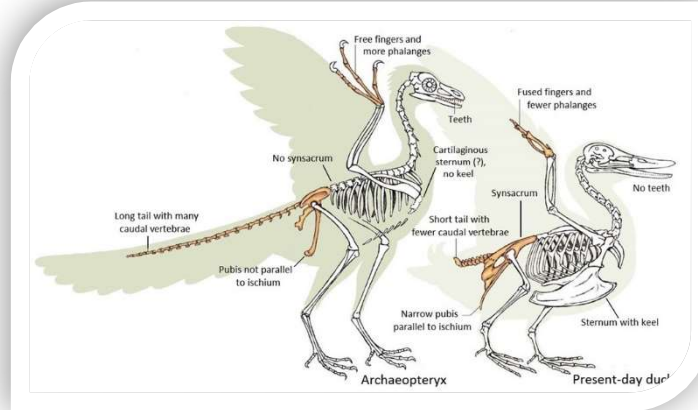
Another example is that 4.7 Billion years is 22 CF rotations taking us back through Day 42. This corresponds to Pre-Flood Day 2 of the Original Creation when the firmament "waters above" were formed.

Day 63 through Day 40 is 14.7 Billion Deep Years, The Beginning of the Universe

Another example is that 14.7 Billion years is 23.5 CF rotations taking us back through Day 40.5. This corresponds to Pre-Flood Day 1 of the Original Creation: The Beginning when Light was formed.

OutFront: Are Dinosaurs Birds?

For centuries, scientists have studied dinosaurs, notably those belonging to sub-order *Theropoda*, noting their striking resemblance to birds. While evolutionists struggle with new discoveries of feathered dinosaurs, and soft tissue, New Creation flips the paradigm regarding origins, using the same evidence.



Many Similarities Between Dinosaurs and Birds

UC Berkley (ucmp.berkeley.edu) has a neat "DinoBuzz" article listing the similarities of birds and dinosaurs. This is both an exhaustive list and really only dealing with one type of dinosaur, Theropods, among whom the popular *Tyrannosaurus Rex* is a member. Here is the list of similarities: Pubis, Elongated Forelimbs, Large Eye Orbits, Flex Wrist, Hollow Thin Bones, 3-fingered opposing hands, Reduced tail, Elongated Feet, S-shaped curved neck, Erect digitigrade (elevated ankle) stance, eggshell structure, teeth, functional wing structure for flight (without flight), expanded sinuses, 5+ bones in sacrum, strap-like scapula, fused clavicles, hinge-like ankle, secondary bony palate, and most strikingly, feathers.

Evolution: Birds Came from Dinosaurs

This is the common story given by evolutionists simply because dinosaurs are buried deeper into the Earth than birds are. Dinosaurs appear in the geological column below the Cretaceous-Tertiary boundary, a demarcation seen world-wide characterized by a thin layer of Iridium ($Z=77$). Of course, we know that this column is not always in the proper order, but this does not dissuade evolutionists from using it anyway to date organismal samples found. Since dinosaurs and birds are so similar and dinosaurs are older than birds because of their position in the column, then birds must have evolved from dinosaurs, according to modern and even theistic evolutionists.

New Creation: Dinosaurs Came from Birds and Small Ark Animals

What I am proposing is that since dinosaurs are so bird-like, why not flip the paradigm and consider that they somehow came from birds. These DNA changes would be degradations, not improvements or increases in complexity. The reason that this would happen would be that while God is still drying the SepGrid, organisms are changing their position on the Diagram instead of staying put in the Ark. We saw from DsD11 that an organism's DNA (both types) are spread across the Diagram. So, while God was in the final 56-Day drying phase, the DNA of everything in the Ark was being reformed for life on the Post-Flood Earth. Therefore, to change position on the Diagram is to change DNA.

FIBONACCI CORNER

The Spiral Cactus.



The beautiful spiral shape of the cacti above, shows the CF in action.

YOUTUBE

Derek's Picks

Dinosaur Peptide Preservation and Degradation

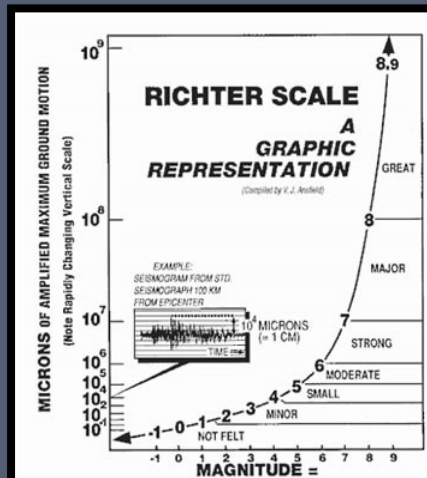


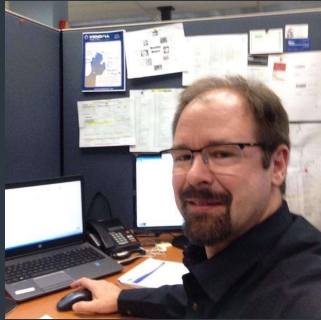
Produced by Revolution Against Evolution (RAE). Hosts Doug Sharp and Rich Geer discuss if "Is it possible for intact peptides, DNA, collagen and osteocytes to be preserved for 68 million years. The iDINO project investigates the fragile nature of biological material and eliminates the possibility that these materials could be preserved for deep time."

This Issue's Q&A in New Creation Research

Q: What does it mean what something is logarithmic?

A: The Richter Scale is an example of a Base-10 logarithmic scale. Richter goes from -1 to above 9 with each increase representing a 10-fold increase in intensity. This scale needs to be logarithmic because the amount of energy in "The Big One" is much greater than that of a minor tremor. How does one represent such large energy differences in a scale that only goes from 1 to 10? Logarithms and exponentials. An exponential is set up like this: $\text{BASE}^{\text{exponent}}$. For example, $10^0 = 1$, $10^1 = 10$, $10^2 = 100$, $10^3 = 1000$, ..., $10^9 = 1000000000$. So, I can represent quantities with differences as vast as 1 to 1000000000 using a 1 to 10 scale. Just like 1-7 Days in the CF represents ROOT quantities 1 to 1674, being a BASE-e logarithmic scale itself.





Who is Derek?

Derek Marshall of East Lansing, MI is an electrical engineer who holds a bachelor's degree in Physics from Michigan State University. An inventor and former Marine, Derek discovered the Creation Function in 2005 and has applied it to many of the Bible's more difficult topics as well as questions in Modern Physics and Chemistry.

Upcoming Articles

- **Derek's Desk Issue 13: The Rapture**

A completely new view of the Rapture using the Biblical Scripture, CF, Ark Remnant, and the Diagram. It is shown why the Rapture, the removal of the Body of Christ, a.k.a The Church, must take place before the Great Tribulation can possibly occur. This sets the stage for some of the most mind-expanding findings of my Creation Function work.

- **Derek's Desk Issue 14: UFO's and ET in the Bible**

Are there UFO's in the Bible? What about Extra-Terrestrial and Celestial Beings? You may be very surprised at the possibilities.

- **Derek's Desk Issue 15: The Antichrist and the Mark of the Beast**

What can the Creation Function and The Diagram tell us about the Antichrist. Can we fulfill the Revelation 13:18 challenge to count the number of the Beast?

Credits/Links

- **Pictures**

Spiral Cactus: http://www.liflfe.com/Encyclopedia/CACTI/Family/Cactaceae/33151/Cereus_forbesii_var._spiraliforme

Bird and Dino: <http://people.eku.edu/ritchisong/554notes1.html>

Therapods: <http://franzanth.com/> This artist has some really neat stuff—Check out his website!

Richter Scale: <https://www.quora.com/Why-isn-t-the-Richter-scale-a-linear-scale>

Geological Time Spiral: <https://pubs.usgs.gov/gip/2008/58> This deep time spiral comes as a poster at the USGS Website.

All other graphics by Derek

Derek's Desk Issue 12 February 2019 Derek J. Marshall (C) 2019 All Rights Reserved



CreationFunction.com
New Creation Research