

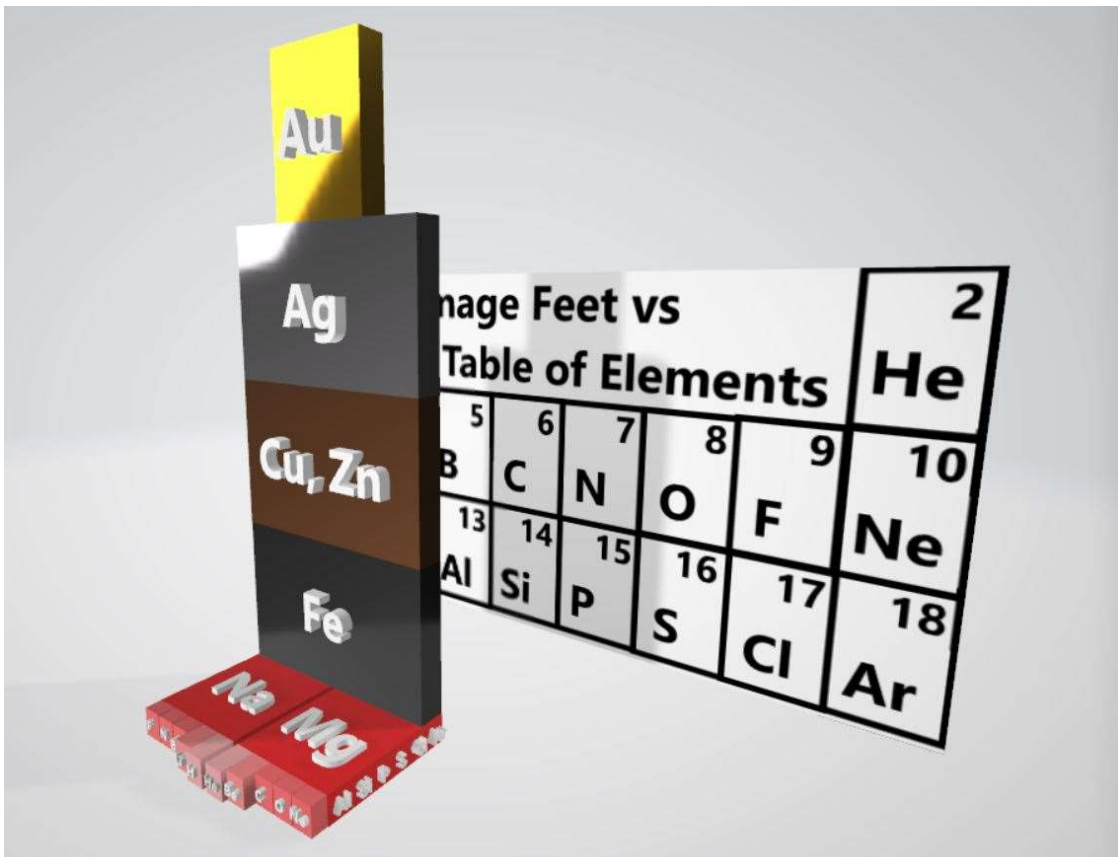
THE PERIODIC TABLE FOUND IN DANIEL

Mr. Derek Marshall, CreationFunction.com

8/14/2021

REVOLUTION AGAINST EVOLUTION 8/24/2021 SHOW PITCH

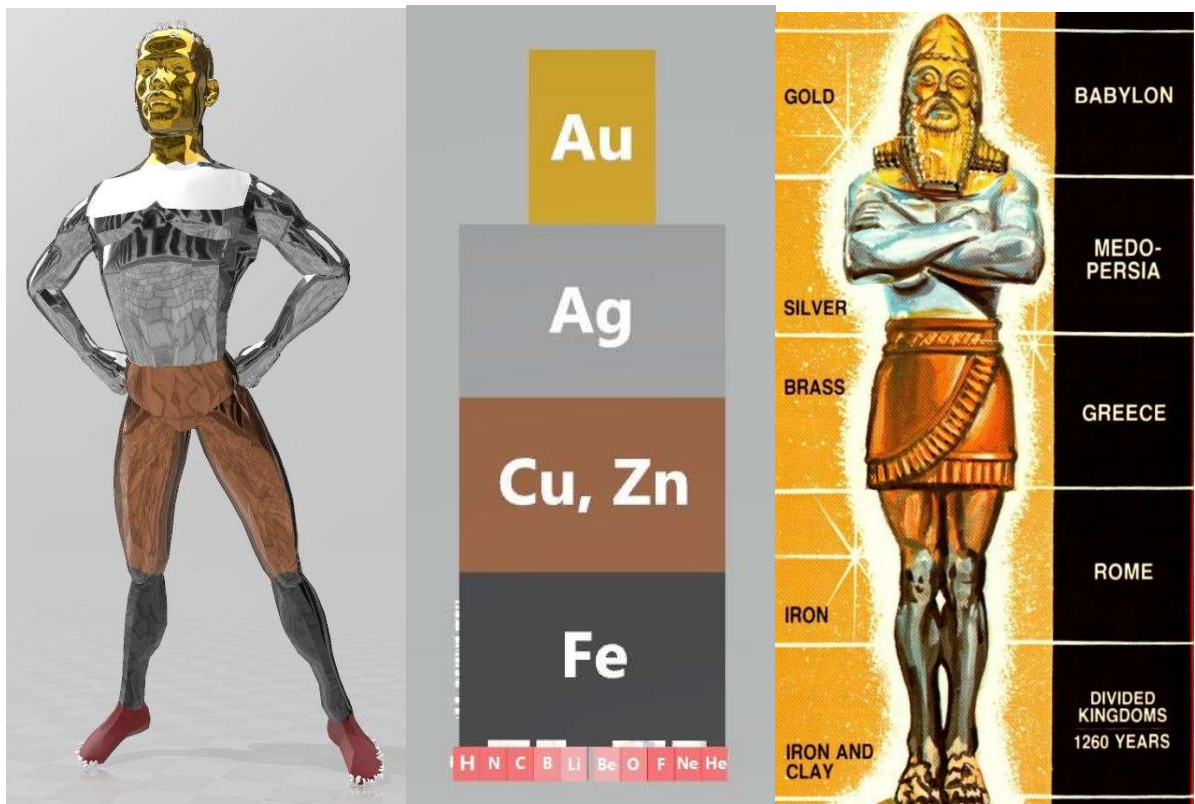
1. The Image of Nebuchadnezzar featured in the dream that Daniel interpreted in Chapter 2 was a prophetic message foretelling the rise and subsequent fall of 5 world kingdoms, the last still to be realized. The statue in the dream had five distinct sections, each made of a different material: A Head of Gold, Breast/Arms of Silver, Belly/Thighs of Brass, Legs of Iron, Feet parts of Iron and Clay. From a science perspective, these are listed in reverse Periodic Table of Elements (PTOE) order. An investigation was made to determine if there are any other similarities to the PTOE.
2. The dimensions of the statue that Nebuchadnezzar made are interesting, with a height of 60 cubits, and breadth of 6 cubits. If also we consider the Image's two feet and ten toes, an accurate model of the PTOE from Hydrogen to Gold is developed, paralleling the Image's five main features.
3. This Daniel Image model is more than just a list of elements in order. The model also demonstrates the following unique features of the PTOE: The first four s-orbitals, three p-orbitals, and d-orbital are shown in PTOE order. Also, Group 11, the transition from metals to semi-metals, the elemental composition of clay, the Pauli Exclusion Principle, elemental abundances, relative sizes of the atoms from left to right on PTOE, missing Pm, and the nuclear "Knee of Stability" at Iron are shown.



1. The Image of Nebuchadnezzar's Dream: A Prophecy of World Kingdoms

i The Image of Nebuchadnezzar featured in the dream that Daniel interpreted in Chapter 2 was a prophetic message foretelling the rise and subsequent fall of 5 world kingdoms, the last still to be realized.

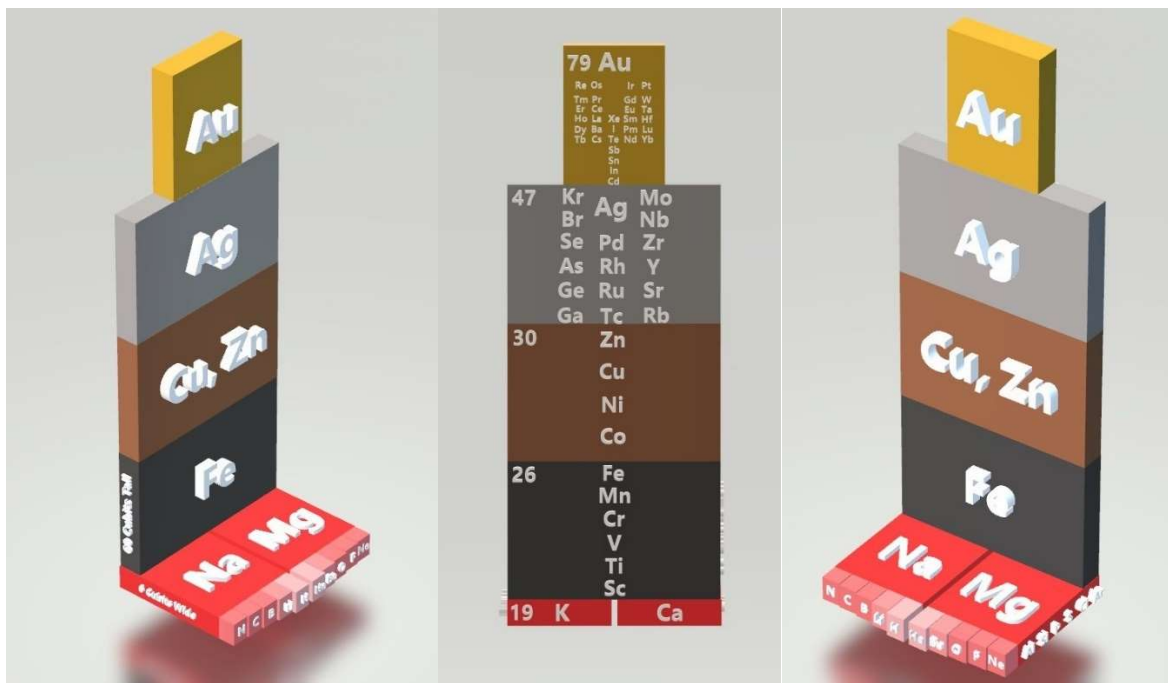
- A. **Nebuchadnezzar had a dream** and wished to have it interpreted. However, he couldn't remember the dream. Daniel was brought in to interpret the dream and tell the King what it was.
- B. **The prophetic interpretation** thereof was a preview of all of the World Kingdoms that were to come. The prophecy is astonishingly accurate through the looking glass of history, and the last kingdom is yet to come. Therefore, it benefits us to understand all we can about this vision, in whatever form it may take.
- C. **Gold; Assyrian Empire** (Rich's Input)
- D. **Silver; Medio-Persian Empire** (Rich's Input)
- E. **Brass; Greek Empire** (Rich's Input)
- F. **Iron; Roman Empire** (Rich's Input)
- G. **Iron/Clay: Divided Kingdom** (Future)
- H. **History is not the focus of this presentation**; However, it is essential to show that these things actually happened. This history adds weight to what we will discuss next.
- I. **Elements are in reverse Periodic Table (PTOE) order.** The PTOE was not discovered until the 19th Century A.D.



2. A Statue Built by Man: Dimensions and Structure Similar to Periodic Table

i The dimensions of the statue that Nebuchadnezzar made are interesting, with a height of 60 cubits, and breadth of 6 cubits. If we consider the Image's two feet and ten toes, an accurate model of the PTOE from Hydrogen to Gold is realized, paralleling the Image's five main features. **DISCLAIMER:** This work does not suggest that the Image in Nebuchadnezzar's Dream was anything other than what the Bible says it was. We are simply pointing out that the pattern prophesied parallels that of the PTOE.

- A. **Prophecy:** Periods during which Kingdoms Ruled. PTOE also organized in order of Periods (Periodic)
- B. **Period 6 of PTOE:** Gold Head: Au, atomic number 79
- C. **Period 5 of PTOE:** Silver Breast and Arms: Ag, Atomic Number 47
- D. **Period 4 of PTOE:** Brass Belly and Thighs: Cu & Zn, Atomic Numbers 29, 30
- E. **Period 4 of PTOE:** Iron Legs: Fe, Atomic Number 26
- F. **Period 3, 2, 1 of PTOE:** Clay, Mixed Feet: Si, Al, Mg, Atomic Numbers 14, 13, 12, resp.
- G. **60 Cubits High**, so $79 - 60 =$ Atomic Number 19, at Heel
- H. **6 Cubits Wide**, so $19 - 6 =$ Atomic Number 13, at Foot. Six bones side of foot.
- I. **Clay** is comprised of largely Silica, Aluminum, and Magnesium. Atomic Numbers 14, 13, 12 respectively. This arrangement put clay on the foot, consistent with Daniel 2.
- J. **Two feet;** Magnesium, Atomic Number 12, the other could be Sodium, Atomic Number 11.
- K. **Ten toes**, representing elements Neon to Hydrogen, Atomic Numbers 10 to 1, respectively. These are a mixture of metals and non-metals, consistent with the description in Daniel 2, "Clay mingled with the *strength of Iron.*"
- L. **This is the general structure of the model.** However, many more features of this structure genuinely make it attractive as a 3-dimensional PTOE.



3. The Daniel Periodic Table Model: Image Structure Follows Periodic Table Structure: 12 Points

i The model also demonstrates the following unique features of the PTOE: The first four s-orbitals, three p-orbitals, and d-orbital are shown in PTOE order. Also, Group 11, the transition from metals to semi-metals, relative elemental size from left to right on PTOE, the Pauli Exclusion Principle, elemental abundances, missing Pm, and the nuclear "Knee of Stability" at Iron, similarity to the Creation Function, and potential for Period 7 are shown.

- A. **PTOE's orbital structure is followed** through Element 30, Zn. One can precisely count through the Toes, Feet, Leg, Thigh, and Belly structure using the PTOE.
- B. **The first four "s-orbitals"**, 1s, 2s, 3s, 4s. (8 elements)
- C. **The first two "p-orbitals"**, 2p, 3p, 4p (12 elements)
- D. **The first "d-orbital"**, 3d (10 Elements)
- E. **Group 11**, Gold, Silver, and Copper (Brass)
- F. **Atomic Radii**. Atoms trend smaller from left to right on PTOE, larger top to bottom. H, He little toes smallest. Li, Be large. B, C, N, O, F, Ne smaller, Na, Mg largest.
- G. **The transition from Alkaline metals** (Mg, Atomic Number 12) to Aluminum 13. to semi-metals (Silicon, 14) from top of foot to side dimension
- H. **Pauli Exclusion Principle, Hund's Rule**. The manner in which electronic orbitals are populated is followed. The left foot is left spin, and the right foot is right spin.
- I. **Abundances**. The closer the elements are to the base (Earth), the more abundant in the crust of the Earth. Elemental abundances drop of severely after Zinc, Atomic Number 30, at the top of the thigh.
- J. **Missing Promethium**, (Synthetic) Atomic Number 61. The actual number of Elements from 79 to 19 (inclusive) would be 61. Promethium is not Young-Earth stable (Half-Life = 17.7 years), and only a few hundred grams exist on Earth naturally at any given time. Since all that exists is synthetic, we could eliminate it as part of the Image structure. I leave it in the Gold Head for reference. That this "knockout" element is accounted for in the prophecy is impressive.
- K. **"Knee of Stability"** Iron, Atomic number 26, is located at the knee of the statue. Iron has the most stable nucleus as its average binding energy per nucleon is the highest of all the elements. What this creates is a "knee" towards which elements decay, either by fusion (Elements 1 – 25) or by fission (elements 27 - 118). This knee is consistent with the Daniel 2 prophecy, which describes the "strength of Iron" and how it "subdueth all things". Furthermore, when the stone hits the Image on the foot, all of the other elements above shatter (like fission) with the Iron and the Clay. *Also, 26 bones in foot.*
- L. **Follows the Creation Function:** 2, 10, 18, 30 Pattern of Image same as CF
- M. **PTOE Limited?** Does the Daniel Table stop at Gold, Au, Atomic Number 79? Recall Solomon's Molten Sea Model went to 118. Refer to Daniel 2 vs Daniel 7 Table. In scripture, Daniel 7 follows the same periodic pattern as Daniel 2. The first two Beasts of Daniel 7, when added to Daniel 2 data, extends the PTOE model to Atomic Number 118. Amazingly, the subsequent 3 Beasts which would create an overlap with periods already covered by the Image, are numerically cancelled out. These illustrate the correspondence between Daniel chapters 2 and 7.

Daniel 7 Beasts Chromosomes	Daniel 7 +/- Modifier	Daniel 2 Number	Total	PTOE Period
Lion, 38	Wings, 2	Gold, 79	$38 + 2 + 79 = 119$ (118 minus Pm)	118 , PTOE Period 7 Added
Bear, 37	Ribs, 3	Silver, 47	$37 + 3 + 47 = 87$ (86 minus Pm)	86 , PTOE Period 6 Capped
Leopard, 38	4 Wings/4 Heads	Brass, 30	$38 - 8 - 30 = 0$	<i>Dan. 7 Period 3 = Dan. 2 Period 3</i>
Iron Beast, 26	None	Iron, 26	$26 - 0 - 26 = 0$	<i>Dan. 7 Period 4 = Dan. 2 Period 4</i>
11 Horns, 2 Eyes, 1 Mouth	None	Clay, 14	$14 - 0 - 14 = 0$	<i>Dan. 7 Period 5 = Dan. 2 Period 5</i>

30 Zn
Cu
Ni
Co
26 Fe
Mn
Cr
V
Ti
Sc
19 K Ca

1	Daniel Image Feet vs Periodic Table of Elements																2
H																	He
3	4	5	6	7	8	9	10									11	12
Li	Be	B	C	N	O	F	Ne									Na	Mg
11	12	13	14	15	16	17	18									19	20
Na	Mg	Al	Si	P	S	Cl	Ar									K	Ca

1	Daniel Image Feet vs Periodic Table of Elements																2
H																	He
3	4	5	6	7	8	9	10									11	12
Li	Be	B	C	N	O	F	Ne									Na	Mg
11	12	13	14	15	16	17	18									19	20
Na	Mg	Al	Si	P	S	Cl	Ar									K	Ca
		Sc	Ti	V	Cr	Mn	Fe	Co	Ni	Cu	Zn						
		44.956	47.867	50.942	51.996	54.938	55.845	58.933	58.933	63.546	65.38						

Al Si P S Cl Ar

1	Daniel Image Feet vs Periodic Table of Elements																2
H																	He
3	4	5	6	7	8	9	10									11	12
Li	Be	B	C	N	O	F	Ne									Na	Mg
11	12	13	14	15	16	17	18									19	20
Na	Mg	Al	Si	P	S	Cl	Ar									K	Ca