



Professional tips on
handling and maintenance

contact**forte**

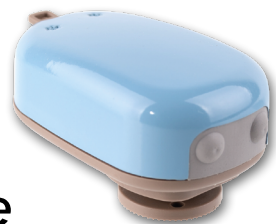
contact forte – Professional tips on handling and maintenance



contact forte, the hearing aid system for all ages, offers everyday practicality and a high level of comfort. Thanks to this flexible, digital hearing system and its numerous functions, you as hearing aid acoustician or ENT specialist are able to offer a product that will make everyday life

much easier for hearing-impaired patients. In order to get the best out of the **contact forte**, we'll make sure to inform you here of all the necessary tips and tricks concerning handling and care so that you too are a pro when it comes to handling the contact forte properly.

contact*forte*



Wearing options	Page 3
Attaching	Page 5
Removing	Page 6
Cleaning and maintenance	Page 6
Important tips	Page 6

Wearing options

for contact forte

contact forte can be worn in a variety of ways. Using a simple adapter, the compact product can be elegantly attached to a hairband, headband or softband, for example. This accessory comes in a range of colours and models and is available from the [BHM-Shop](#). Please make sure you order the correct size. It is also possible, however, to wear the product with your favourite cap or hat, or even to customise your own accessories. Here are all the wearing options:

Headband

Our headband is available in several colours and can be used for both unilateral (monaural) and bilateral (binaural) hearing loss. An adapter with a magnetic snap mechanism is incorporated on two sides, onto which you can attach and remove the **contact forte** quickly and easily.



Hairband

Another way to wear the **contact forte** is to use a hairband, which has an adapter with a magnetic snap mechanism for attaching the **contact forte** on one (monaural) or both sides (binaural).



Softband

When purchasing a softband, it is important to consider whether the **contact forte** is to be used on just one side or both sides. Monaural (unilateral) and binaural (bilateral) softbands are available to order from the [BHM-Shop](#).



Glasses

contact forte can also be worn with your favourite pair of glasses. To do this, there are special glasses adapters, which can be attached to the glasses as an end piece. These contain an adapter with a magnetic snap mechanism, so that you can wear your **contact forte** on one or both sides.



Personalised options

BHM adapters can also be used to make personalised headbands or softbands.

[Adapters for softbands can be ordered here >>](#)

[Adapters for headbands here >>](#)

Adhesive adapters

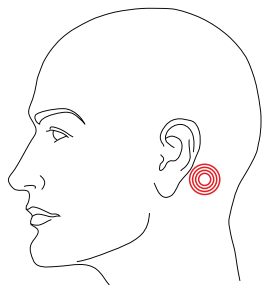
contact forte can also be worn directly behind the ear – easy and quick to apply using an adhesive adapter. The adapter can be worn for several days, and can withstand contact with water when showering or swimming. However, the auditory amplification is somewhat lower with the adhesive adapter.

There is a specific adhesive adapter for the left ear and a specific adhesive adapter for the right ear. When ordering, please check which side it is for.

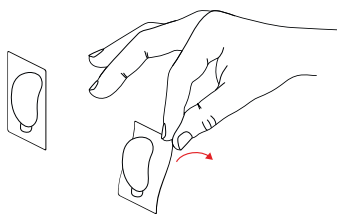


Using the adhesive adapters

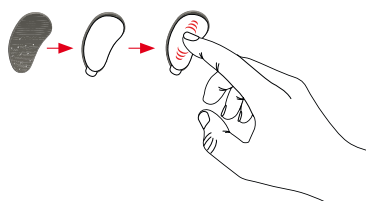
1. Find a suitable spot behind your ear and clean thoroughly with a mild soap to remove any residue from oils or creams, etc. The area must be bare with no hair; if necessary, please shave this area. Wait until the area has fully dried, then attach the adhesive adapter only if the skin is healthy.



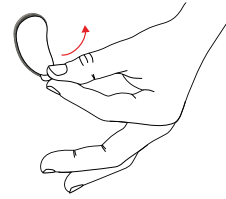
2. Peel the large protective film from the sticker, and ensure that the exposed sticky surface remains clean.



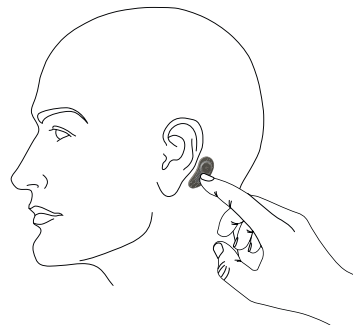
3. Place the sticky side onto the adhesive pad and firmly rub the sticker down.



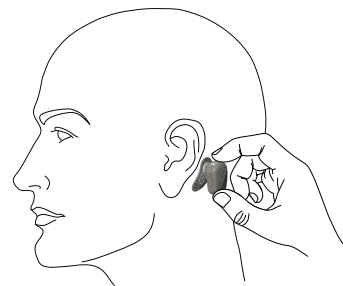
4. Now peel the small protective film from the sticker itself and ensure that the exposed sticky surface remains clean.



5. Place the adhesive adapter onto your chosen spot behind the ear and press the system firmly down for approx. 5 seconds.



6. Then simply snap the hearing system onto the adhesive adapter using the coupling.



General information about the adhesive adapter:

The adhesive adapter can be worn on the skin for several days. The adhesive pad is intended for multiple use; the sticker is intended for single use. After being used several times, the sticker will no longer be effective. There is a risk that hearing may be insufficient, or that the device will be lost. Purchasing a small stock of stickers is therefore recommended.

After use, gently remove the adhesive adapter from the skin. Remove the sticker from the adhesive pad and dispose of it properly.

Then clean the adhesive pad with a cleaning wipe or a clean cloth and store it in a safe, preferably dust-free place out of reach of children.

Attaching the contact forte

Whichever option the customer chooses, the process for attaching the **contact forte** to, and removing it from, the adapter is the same.

Preparing the accessory

To position the accessory (headband, hairband, etc.) on the head correctly, the incorporated adapter must be placed behind the ear on the head. Please ensure that the microphones point downward and that they are level with one another when in an upright position.

For optimum performance, the **contact forte** device should not make contact with the auricle, glasses, head coverings or clothing.

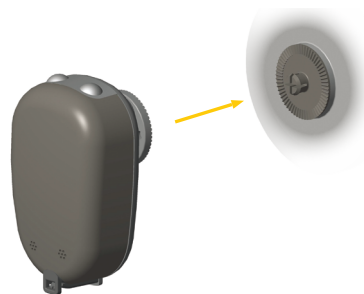
To adjust the angle, please use the ratchet to adjust the hearing system. The **contact forte** can be adjusted to your personal preferences in 6-degree increments.



For babies and children, please make sure that the product is repositioned at regular intervals in order to prevent deformations to the soft cranial bone.

Attaching the contact forte to the adapter

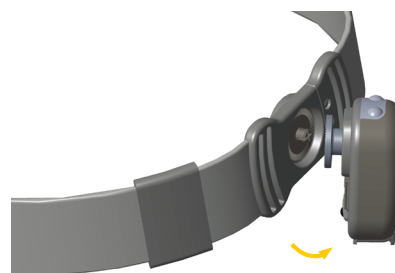
After positioning the selected accessory on the head correctly, simply place the hearing system onto the mechanism (conductor plate) integrated into the accessory using the magnetic snap connector (coupling).



CAUTION: Remove your hearing system before showering, bathing or visiting a sauna, and before applying body care products, hairspray or make-up powder. These kinds of deposits may soil your hearing system and prevent it from functioning smoothly.

Removing the contact forte

To remove **contact forte**, do not simply pull the hearing system from the adapter – it will detach more easily by tilting it to the side.



[Watch the video on how to stop contact forte >>](#)

Maintenance, cleaning and storage of contact forte

contact forte should be cleaned at least once a day. To allow the moisture present in the device to evaporate, a [dry case](#) is useful; storing the product with the battery compartment left open is also advisable.

[Please view the video below to find out exactly how >>](#)



Important tips

1. Find the best position for every patient. Its position on the skull should mould well to the curvature of the adapter and maximise the adhesive surface without any hair underneath it.
2. Avoid any tractive force on the adapter: this will shorten its lifespan.
3. Let your patient practise how to attach and remove the device from the adapter properly.

Notice

The **BHMFit** fitting software for **contact forte** is now also available with **ASHA** (Audio Streaming for Hearing Aids), the new Bluetooth standard for connecting Android devices to hearing aids. We would be happy to add this function to the previous software version. Please contact our customer service: **+43 (0)3359 200 78 0** or order@bhm-tech.at.

Personalised advice or appointment

Can we be of any assistance during the purchasing process for **contact forte**?
Then please contact us directly on **+43 (0)3359 200 78 0** or order@bhm-tech.at.

