

The World Of  
WALL PANEL



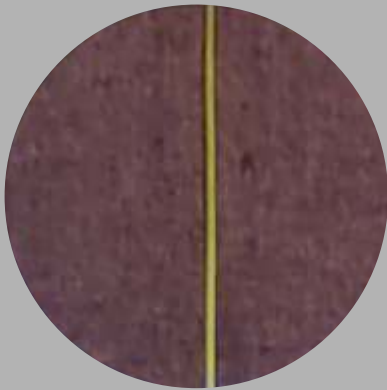
ALASKA  
ACOUSTIC WALLCOVERING

The logo for ALASKA ACOUSTIC WALLCOVERING features the word "ALASKA" in a large, bold, serif font. A thin, dark, curved line arches over the letters, ending in a small, four-pointed star. Below "ALASKA", the words "ACOUSTIC WALLCOVERING" are written in a smaller, bold, sans-serif font.

STC<sup>®</sup>  
WALLPAPER

The logo for STC WALLPAPER features a stylized graphic of two overlapping triangles, one dark and one light, forming a larger triangle. To the right of this graphic, the letters "STC" are written in a large, bold, serif font, with a registered trademark symbol (®) to the upper right. Below "STC", the word "WALLPAPER" is written in a smaller, bold, sans-serif font.

# MULTI-FUNCTION



## SELF ADHESIVE

Backing with glue  
Easy to install



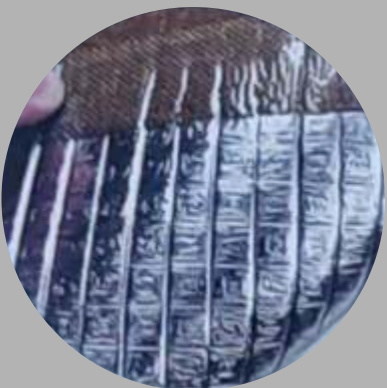
## WATER PROOF & ACOUSTIC ABSORPTION

XPE Layer absorb the sound  
around & High-quality fabric  
No discoloration



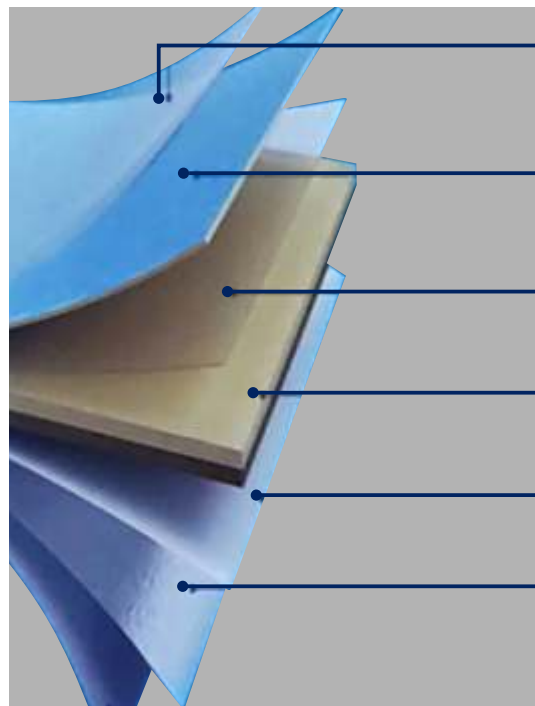
## FREE CUTTING

Simple installation



## ALUMINUM BACK GLUE

Repeated pasting



### PROTECT LAYER

PEPP antibacterial

### FLAX LAYER

High strength

### PSA HOT MELT ADHESIVE LAYER

Environmental

### XPE LAYER

New material, heat insulation & Acoustic insulation

### ALUMINUM FOIL LAYER

Anti-corrosion, moisture-proof, heat preservation

### GLUE LAYER

PSA hot melt adhesive

# PRODUCT PARAMETERS

ITEM: Wall Cloth

THICKNESS: 5mm( $\pm 3\%$ )

FUNCTION: Anti-Corrosion,  
Moisture-Proof,  
Heat Preservation,  
Sound-Proof

INSTALL: Self Adhesive

MATERIAL: Flax+XPE

SIZE (W\*L) /ROLL: 0.65\*2.8m( $\pm 2\%$ )

# INSTALLATION

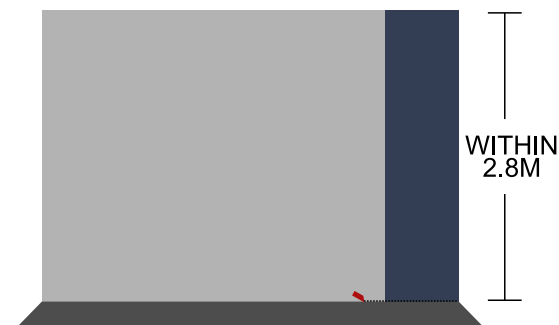
## OPENING THE GOOD LIFE



**STEP 1**  
MEASURE THE HEIGHT  
OF THE WALL TO  
DETERMINE WHETHER  
THE HEIGHT IS WITHIN 2.8M



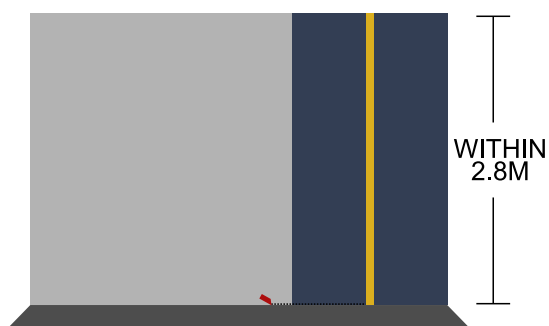
**STEP 2**  
TEAR OFF THE BACK PAPER ABOUT 10CM  
FROM THE BACK OF THE PRODUCT AND  
STICK IT TO THE WALL. THE TOP MUST BE  
ALIGNED. TEAR THE BACK PAPER AND STICK  
IT AT THE SAME TIME, IT CAN BE SMOOTHEN  
BY HAND OR FLAT APPLIANCE



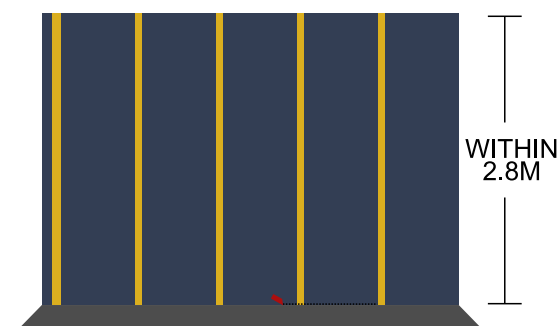
**STEP 3**  
STICK IT TO THE BOTTOM,CUT OF THE  
EXCESS PART NEATLY WITH AN ART KNIFE,  
AND THEN SMOOTHEN IT



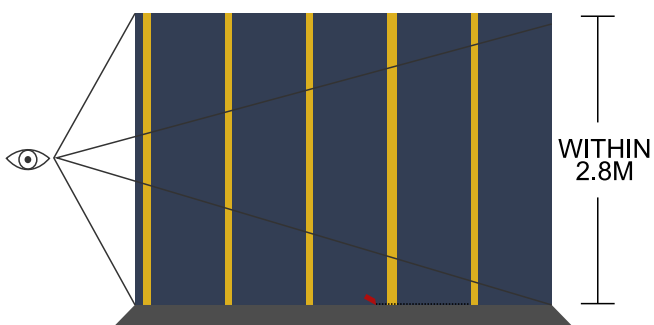
**STEP 4**  
TEAR OFF THE STICKER ON THE BACK OF  
THE DECORATIVE STRIP,STICK IT DIRECTLY  
ON THE WALL ALONG ONE SIDE OFTHE  
PRODUCT, ALIGN, STICK  
AND SMOOTHEN IT



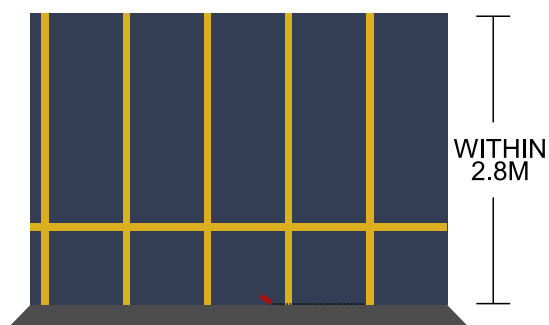
**STEP 5**  
OPEN ONE ROLL AGAIN, ALIGN, PASTE  
AND SMOOTHEN ALONG ONE SIDE OF  
THE DECORATIVE STRIP



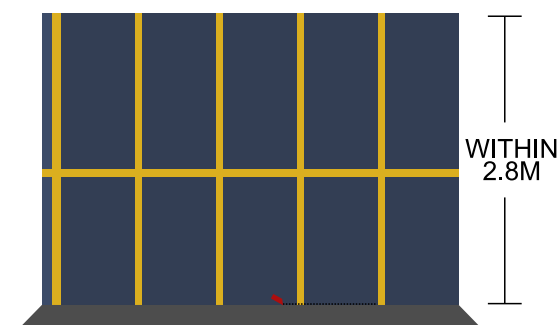
**STEP 6**  
REPEAT THE ABOVE STEPS AND PAY  
ATTENTION TO THE FLATNESS OF THE  
JOINT TO ACHIEVE THE  
BEST PRODUCT EXPERIENCE



**STEP 7**  
CHECK THE PRODUCTS ON THE WALL  
AND COMPLETE THE PASTING



**STEP 8**  
YOU CAN ALSO PUT DECORATIVE STRIP  
LINE THIS WAY AS SHOWN  
IN PICTURE ABOVE



## Decorative strip optional color

**Gold**



**Silver**





ALASKA  
ACOUSTIC WALLCOVERING

AW01

Opening The Good Life





ALASKA  
ACOUSTIC WALLCOVERING

AW02

Opening The Good Life

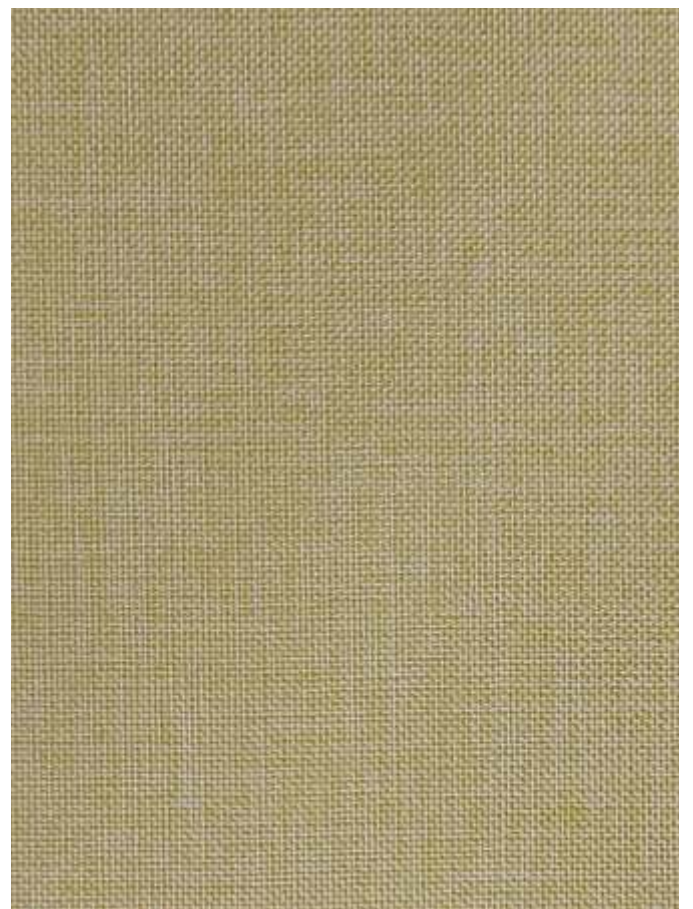




ALASKA  
ACOUSTIC WALLCOVERING

AW03

Opening The Good Life







ALASKA  
ACOUSTIC WALLCOVERING

AW04

Opening The Good Life







ALASKA  
ACOUSTIC WALLCOVERING

AW05

Opening The Good Life



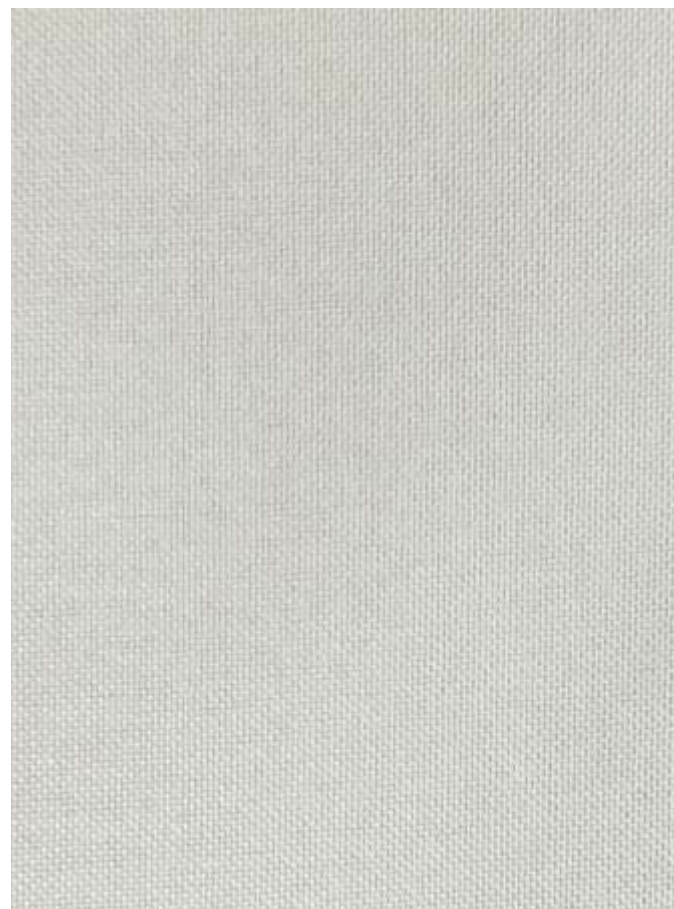


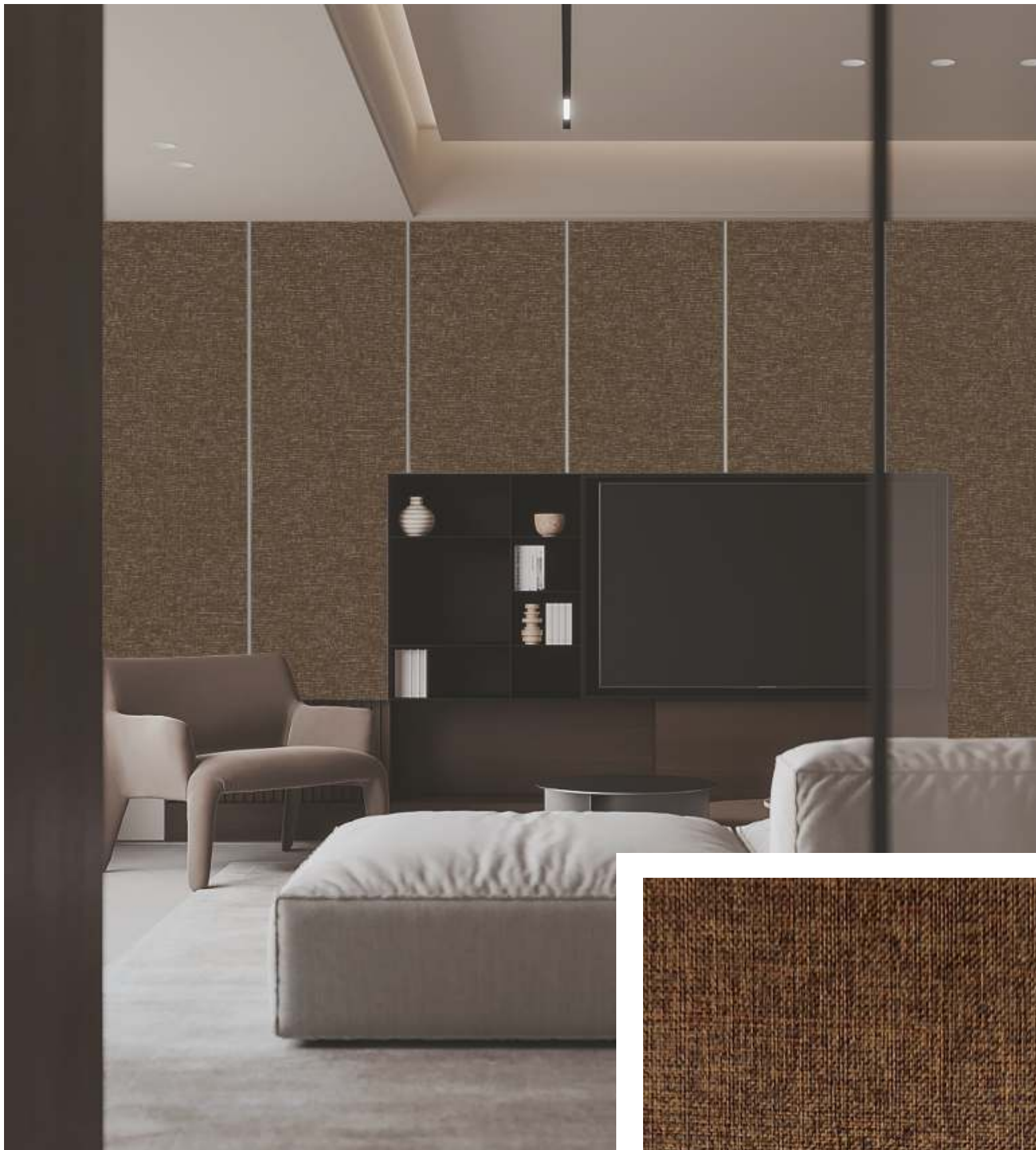


ALASKA  
ACOUSTIC WALLCOVERING

AW06

Opening The Good Life





ALASKA  
ACOUSTIC WALLCOVERING

AW07

Opening The Good Life





ALASKA  
ACOUSTIC WALLCOVERING

AW08

Opening The Good Life





ALASKA  
ACOUSTIC WALLCOVERING

AW09

Opening The Good Life







ALASKA  
ACOUSTIC WALLCOVERING

AW10

Opening The Good Life







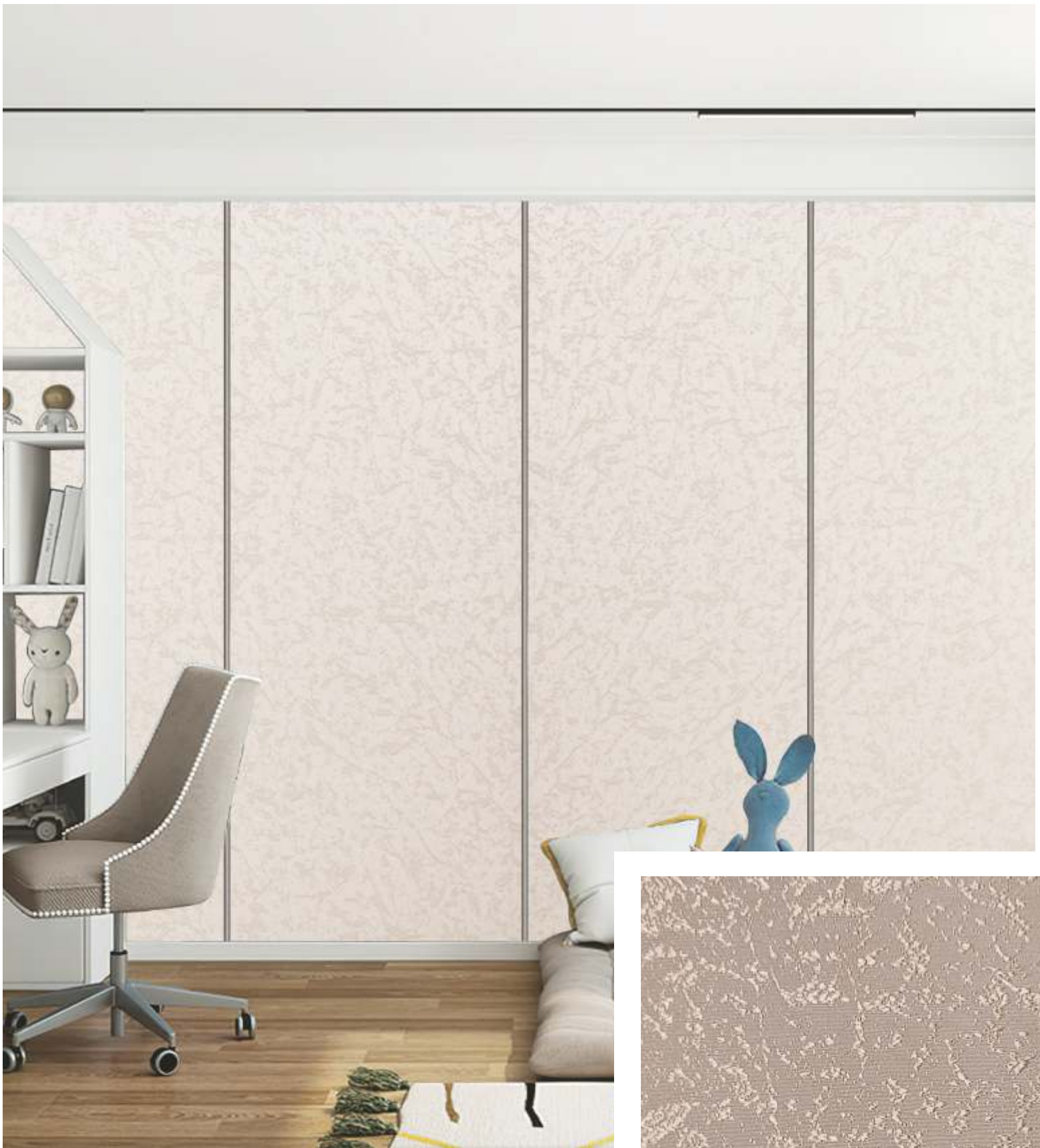
ALASKA  
ACOUSTIC WALLCOVERING

AW11

Opening The Good Life







ALASKA  
ACOUSTIC WALLCOVERING

AW12

Opening The Good Life





**ALASKA**  
ACOUSTIC WALLCOVERING

AW13

Opening The Good Life







**ALASKA**  
ACOUSTIC WALLCOVERING

AW14

Opening The Good Life

