

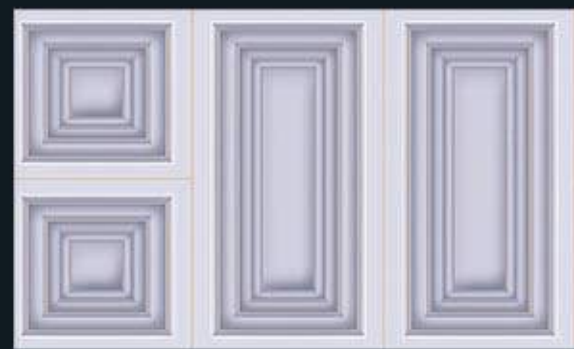


TRENDS

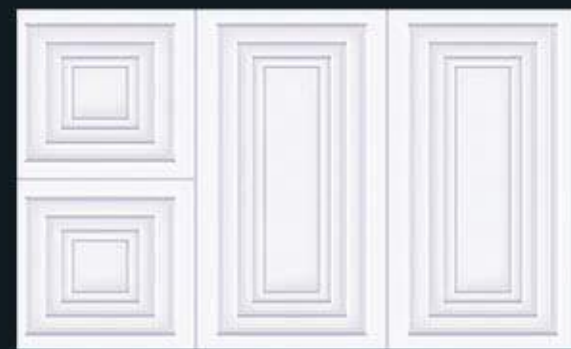
We will wholeheartedly Sincere for you to create a different art,
Different worlds of the home environment.



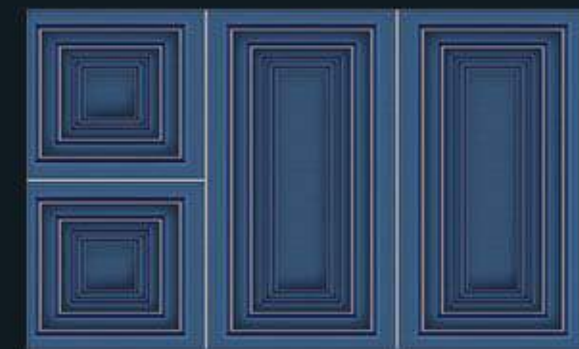
PAGE:01 BT-001



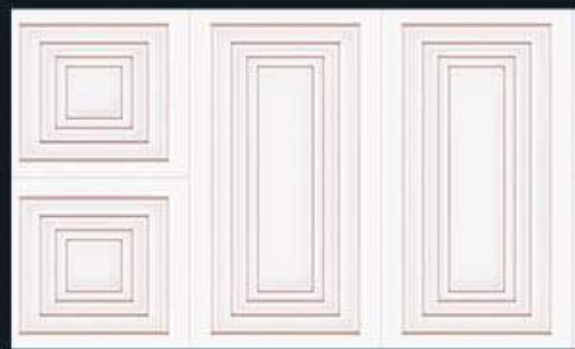
PAGE:02 BT-002



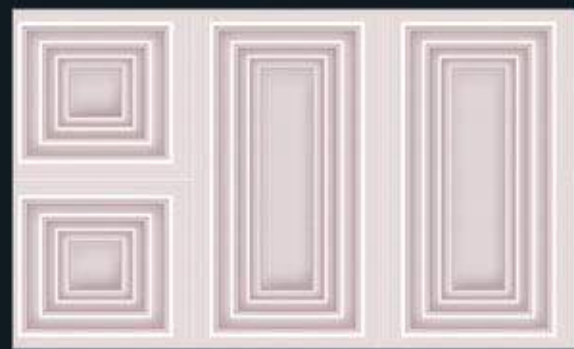
PAGE:03 BT-003



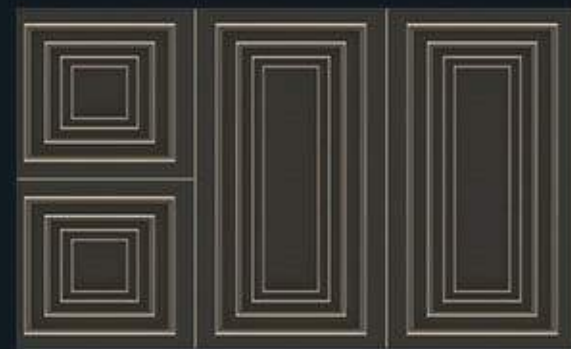
PAGE:04 BT-004



PAGE:05 BT-005



PAGE:06 BT-006



PAGE:07 BT-007



PAGE:08 BT-008



PAGE:09 BT-009



PAGE:10 BT-010



PAGE:11 BT-011



PAGE:12 BT-012



PAGE:13 BT-013



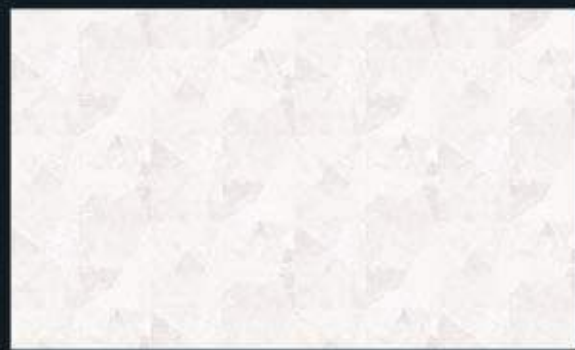
PAGE:14 BT-014



PAGE:15 BT-015



PAGE:16 BT-016



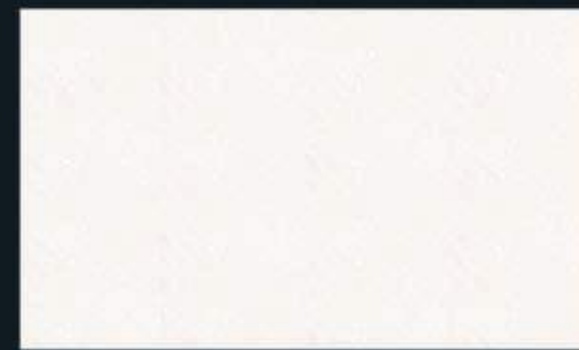
PAGE:17 BT-017



PAGE:18 BT-018



PAGE:19 BT-019

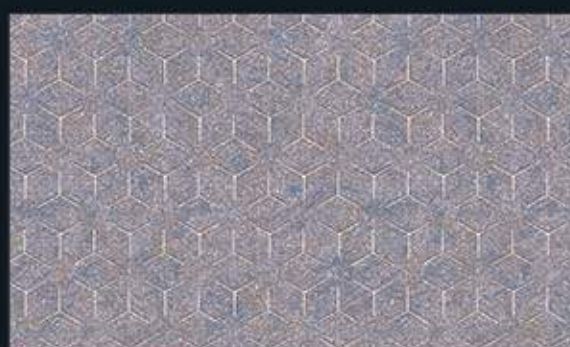


PAGE:20 BT-020



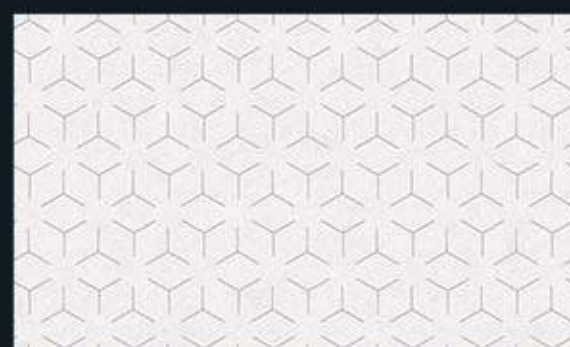
PAGE:21

BT-021



PAGE:22

BT-022



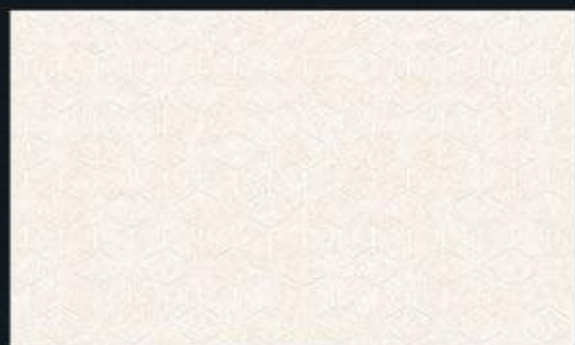
PAGE:23

BT-023



PAGE:24

BT-024



PAGE:25

BT-025



PAGE:26

BT-026



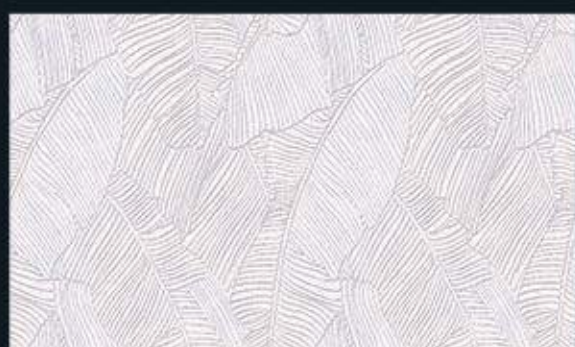
PAGE:27

BT-027



PAGE:28

BT-028



PAGE:29

BT-029



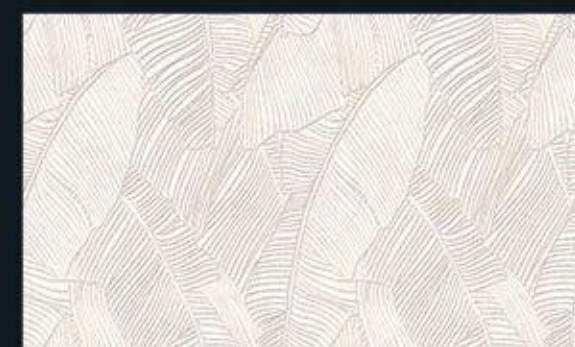
PAGE:30

BT-030



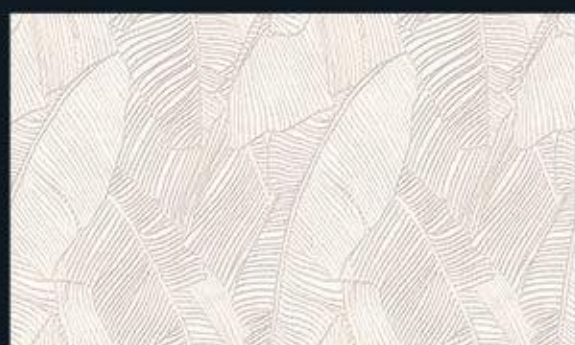
PAGE:31

BT-031



PAGE:32

BT-032



PAGE:33

BT-033



PAGE:34

BT-034



PAGE:35

BT-035



PAGE:36

BT-036



PAGE:37

BT-037



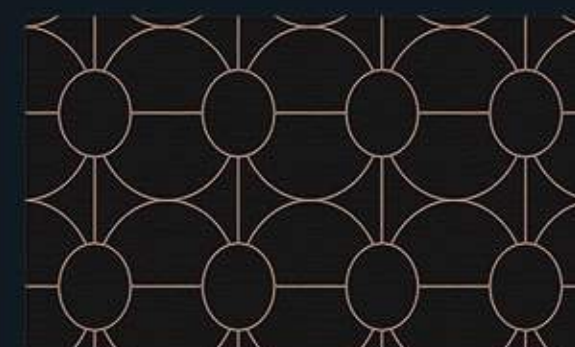
PAGE:38

BT-038



PAGE:39

BT-039

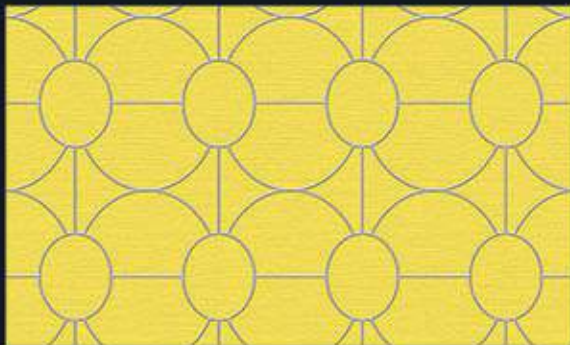


PAGE:40

BT-040



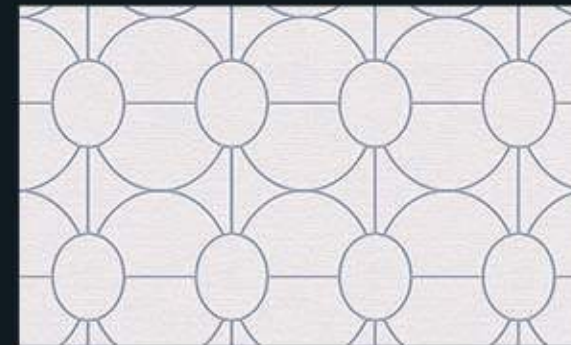
b | Beyond Trends



PAGE:41 BT-041



PAGE:42 BT-042



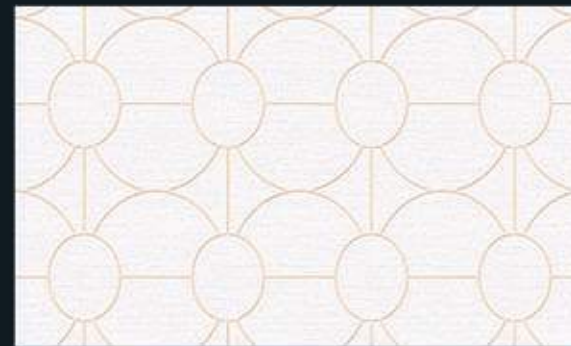
PAGE:43 BT-043



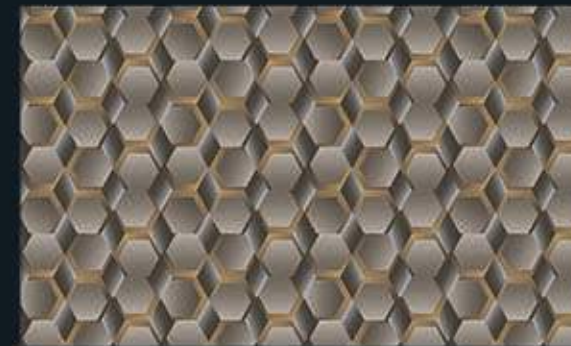
PAGE:44 BT-044



PAGE:45 BT-045



PAGE:46 BT-046



PAGE:47 BT-047



PAGE:48 BT-048



PAGE:49 BT-049



PAGE:50 BT-050



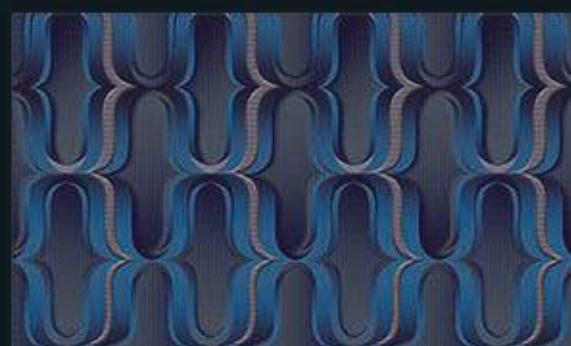
PAGE:51 BT-051



PAGE:52 BT-052



PAGE:53 BT-053



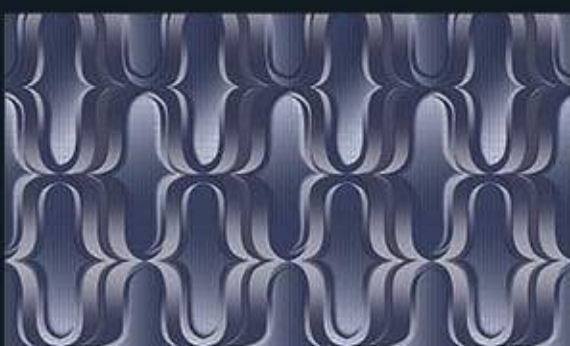
PAGE:54 BT-054



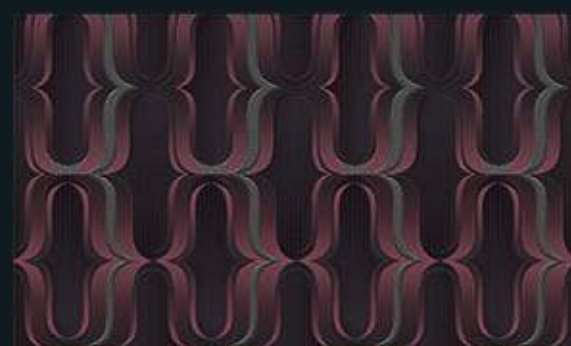
PAGE:55 BT-055



PAGE:56 BT-056



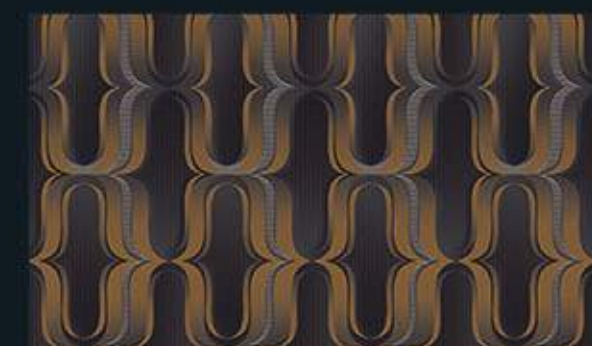
PAGE:57 BT-057



PAGE:58 BT-058



PAGE:59 BT-059



PAGE:60 BT-060

TRENDS

The sense and image aroused by the visible world, that is, the physical world, is difficult to describe,
or even impossible to describe with definition and vocabulary.

In fact, it is totally different from what we feel in our daily life, because the world we see is determined by shape, color,
space and light... I believe that nothing is more abstract and unreal than the world we see.

Light luxury | ideas for the House

a soft colour



High grade greycolor



Elegant colors



墙纸反贴，三边留3厘米

We will wholeheartedly Sincere for you to create a different art,
Different worlds of the home environment.





Light luxury | ideas for the House

a soft colour

High grade greycolor

Elegant colors

TRENDS

The sense and image aroused by the visible world, that is, the physical world, is difficult to describe, or even impossible to describe with definition and vocabulary.

In fact, it is totally different from what we feel in our daily life, because the world we see is determined by shape, color, space and light.... I believe that nothing is more abstract and unreal than the world we see.



Light luxury | ideas for the House

a soft colour

High grade greycolor

Elegant colors

TRENDS

The sense and image aroused by the visible world, that is, the physical world, is difficult to describe, or even impossible to describe with definition and vocabulary. In fact, it is totally different from what we feel in our daily life, because the world we see is determined by shape, color, space and light... I believe that nothing is more abstract and unreal than the world we see.

TRENDS

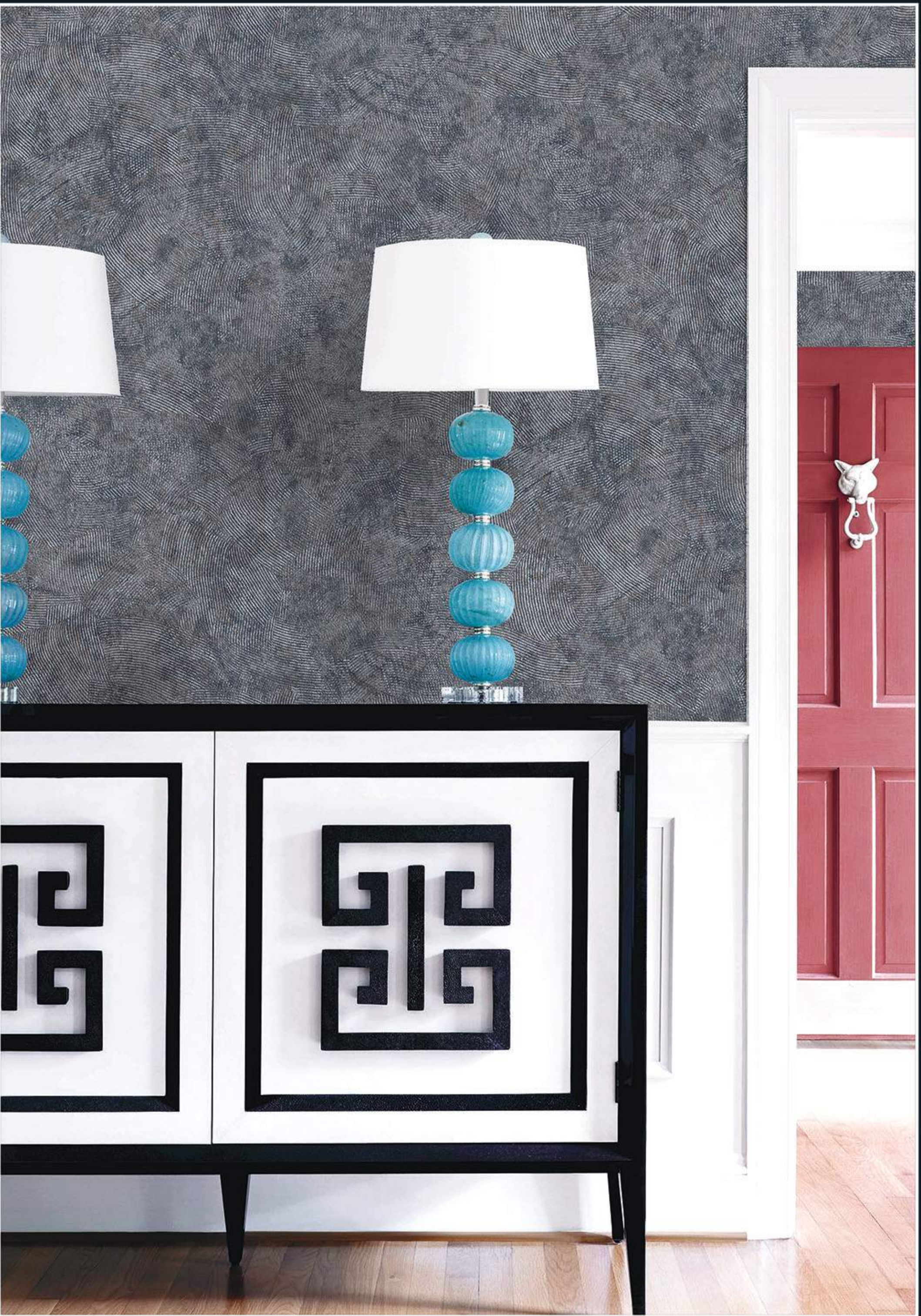
We will wholeheartedly Sincere for you to create a different art,
Different worlds of the home environment.





TRENDS

The sense and image aroused by the visible world, that is, the physical world, is difficult to describe,
or even impossible to describe with definition and vocabulary.
In fact, it is totally different from what we feel in our daily life, because the world we see is determined by shape, color,
space and light... I believe that nothing is more abstract and unreal than the world we see.



TRENDS

We will wholeheartedly Sincere for you to create a different art,
Different worlds of the home environment.



TRENDS

The sense and image aroused by the visible world, that is, the physical world, is difficult to describe,
or even impossible to describe with definition and vocabulary.
In fact, it is totally different from what we feel in our daily life, because the world we see is determined by shape, color,
space and light... I believe that nothing is more abstract and unreal than the world we see.





Light luxury | ideas for the House

a soft colour

High grade greycolor

Elegant colors

TRENDS

The sense and image aroused by the visible world, that is, the physical world, is difficult to describe, or even impossible to describe with definition and vocabulary. In fact, it is totally different from what we feel in our daily life, because the world we see is determined by shape, color, space and light... I believe that nothing is more abstract and unreal than the world we see.



TRENDS

We will wholeheartedly Sincere for you to create a different art,
Different worlds of the home environment.

6 | Beyond Trends



Light luxury | ideas for the House

a soft colour

High grade greycolor

Elegant colors

TRENDS

The sense and image aroused by the visible world, that is, the physical world, is difficult to describe, or even impossible to describe with definition and vocabulary. In fact, it is totally different from what we feel in our daily life, because the world we see is determined by shape, color, space and light... I believe that nothing is more abstract and unreal than the world we see.

墙纸反贴

GIACOMO

We will wholeheartedly Sincere for you to create a different art,
Different worlds of the home environment.



MR
DESIGN WALLPAPER





Light luxury | ideas for the House

a soft colour

High grade greycolor

Elegant colors



TRENDS

We will wholeheartedly Sincere for you to create a different art,
Different worlds of the home environment.

b | Beyond Trends



Light luxury | ideas for the House

a soft colour

High grade greycolor

Elegant colors



TRENDS

We will wholeheartedly Sincere for you to create a different art,
Different worlds of the home environment.

6 | Beyond Trends



TRENDS

The sense and image aroused by the visible world, that is, the physical world, is difficult to describe,
or even impossible to describe with definition and vocabulary.
In fact, it is totally different from what we feel in our daily life, because the world we see is determined by shape, color,
space and light... I believe that nothing is more abstract and unreal than the world we see.

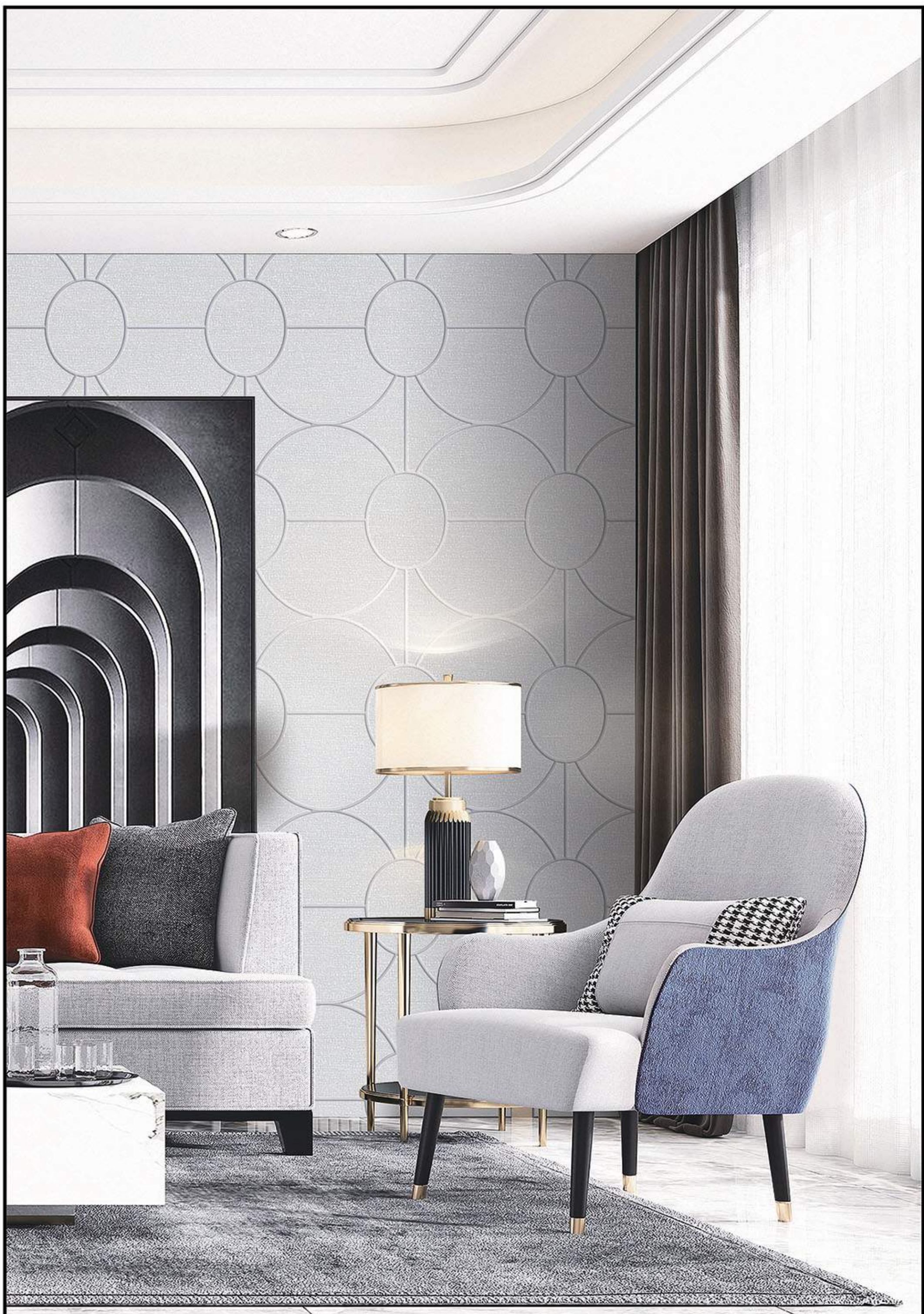
TRENDS

We will wholeheartedly Sincere for you to create a different art,
Different worlds of the home environment.



GIACOMO

We will wholeheartedly Sincere for you to create a different art,
Different worlds of the home environment.



NR
DESIGN WALLPAPER



TRENDS

We will wholeheartedly Sincere for you to create a different art,
Different worlds of the home environment.

GIACOMO

We will wholeheartedly Sincere for you to create a different art,
Different worlds of the home environment.



MR
DESIGN WALLPAPER

TRENDS

We will wholeheartedly Sincere for you to create a different art,
Different worlds of the home environment.



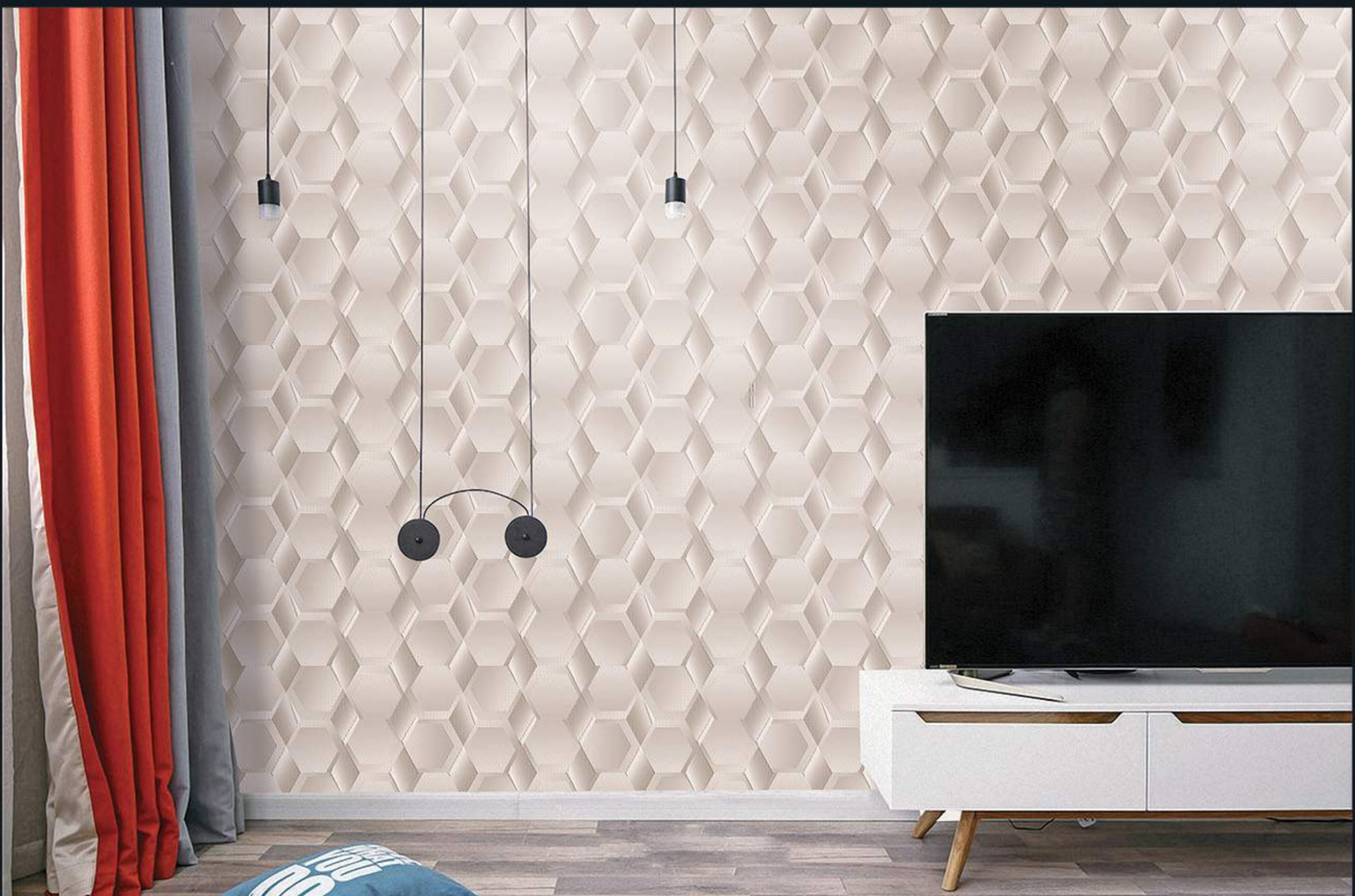


Light luxury | ideas for the House

a soft colour

High grade greycolor

Elegant colors



TRENDS

We will wholeheartedly Sincere for you to create a different art,
Different worlds of the home environment.

b | Beyond Trends



Light luxury | ideas for the House

a soft colour

High grade greycolor

Elegant colors



TRENDS

We will wholeheartedly Sincere for you to create a different art,
Different worlds of the home environment.

b | Beyond Trends

GIACOMO

We will wholeheartedly Sincere for you to create a different art,
Different worlds of the home environment.



MR
DESIGN WILDMAN

TRENDS

We will wholeheartedly Sincere for you to create a different art,
Different worlds of the home environment.



PAGE	PATTERN	PAGE	PATTERN	PAGE	PATTERN
1	BT-001	21	BT-021	41	BT-041
2	BT-002	22	BT-022	42	BT-042
3	BT-003	23	BT-023	43	BT-043
4	BT-004	24	BT-024	44	BT-044
5	BT-005	25	BT-025	45	BT-045
6	BT-006	26	BT-026	46	BT-046
7	BT-007	27	BT-027	47	BT-047
8	BT-008	28	BT-028	48	BT-048
9	BT-009	29	BT-029	49	BT-049
10	BT-010	30	BT-030	50	BT-050
11	BT-011	31	BT-031	51	BT-051
12	BT-012	32	BT-032	52	BT-052
13	BT-013	33	BT-033	53	BT-053
14	BT-014	34	BT-034	54	BT-054
15	BT-015	35	BT-035	55	BT-055
16	BT-016	36	BT-036	56	BT-056
17	BT-017	37	BT-037	57	BT-057
18	BT-018	38	BT-038	58	BT-058
19	BT-019	39	BT-039	59	BT-059
20	BT-020	40	BT-040	60	BT-060

PATTERN AND SPACING OF WALLPAPER



→|← 64CM



→|← 64CM



→|← 64CM



→|← 64CM



→|← 64CM



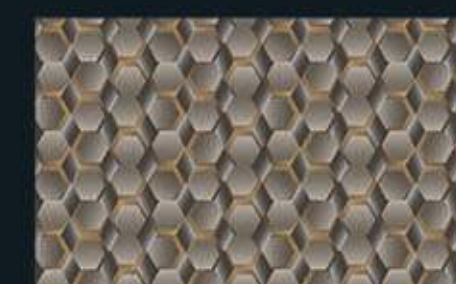
→|← 64CM



→|← 64CM



→|← 53CM



→|← 64CM