

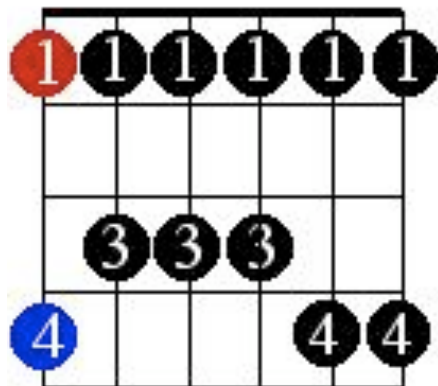
Here we have the 5 Boxes/Forms/Positions of a Pentatonic Scale

The Red Root Note is the Minor Root

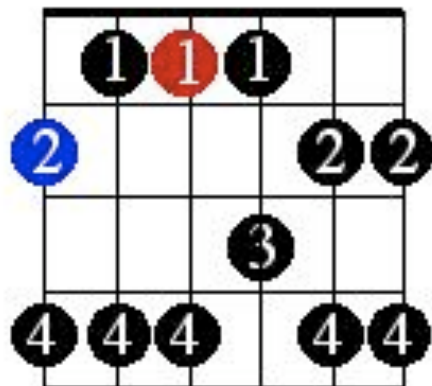
The Blue Root is the Major Root Note

Same Scale, just a different starting point.

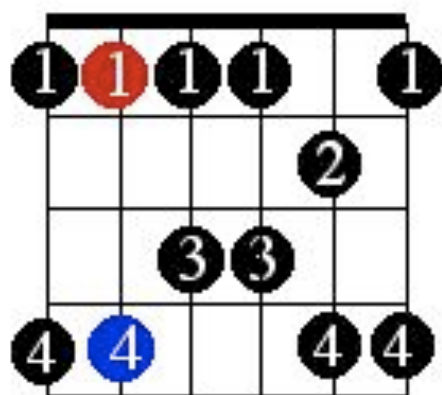
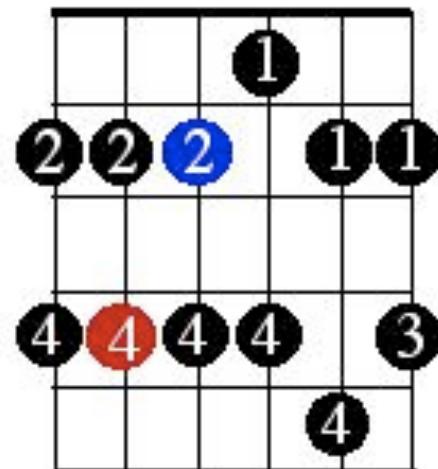
Form #1



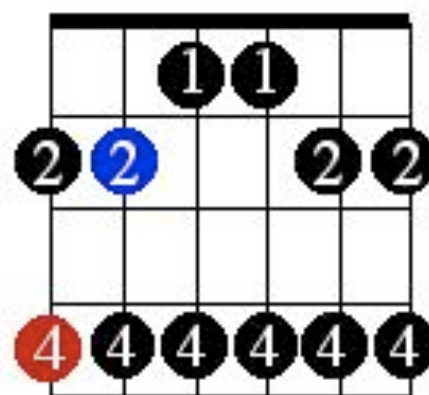
Form #2



Form #3



Form #4



Form#5

They All Click Together, Go Slow and make sure you can see how the all stack together.

