

# DAMPF

## BLUETOOTH RECEIVER/AMPLIFIER



Dimensions / Weight: 16.2cm x 6.9cm x 2.2cm (LxWxH) / 140 grams

Power supply input: 110-240 VAC, output 12V DC

2x 20W RMS output

Bluetooth range is about 15m (using the internal ceramic antenna)

Plastic casing in order to meet NEN1010 standards (non-metal required)

Special power supply specifically for audio devices

High quality removable connector

AUX input and automatic switching between Bluetooth and AUX

Easily switchable between mono and stereo

Volume limiting per channel

Extremely power efficient (0.8W in listening mode)

Easy-to-fit through holes in the housing

Easy to program individual name and PIN code for optimised control

Only high quality components from top renowned manufacturers are used

CE certified

The robust design of the Dampf unit features a Bluetooth Engine with internal ceramic antenna, pre-amplifier, 40 W power amplifier and a controller. An additional device (e.g. TV or tablet) can be connected through AUX-in (3.5mm audio jack). A multiplexer switches automatically between Bluetooth and Aux audio. 1-6 speakers can be connected in mono or stereo.

Stable Bluetooth connectivity, simplicity for both guest and provider, and superb efficiency characterise Dampf. Dampf also allows for easy configuration of name and pin-code (pairing protection), volume limitation per channel, and setting the number of Bluetooth users it remembers.

Due to the internal controller and its reliability the Dampf unit is a professional alternative to consumer Bluetooth audio speakers and amplifiers. The system is designed and produced in The Netherlands.

**Applications:** hotel rooms and suites, short and long-stay apartments, spa and wellness, offices and work hubs, professional kitchens, conference and meeting spaces, small retail shops, bars and lounges.

### References

Hotel Arts Barcelona (Ritz Carlton)  
 Bilderberg Rotterdam  
 Luxury Suites Amsterdam  
 Leonardo Hotel Hamburg  
 Beach hotel Domburg  
 Banks Mansion Amsterdam  
 Landscape de Wilmersberg  
 Sofitel Legend The Grand  
 Michelberger Berlin  
 Hotel Café Royal London  
 WestCord Hotels

Swissotel Amsterdam  
 Carlton Ambassador The Hague  
 City Hub Amsterdam and Rotterdam  
 Villa la Roche (restaurant)  
 Mercure Essen Plaza  
 Suite Hotel Pincoffs  
 City of Dreams – Morpheus  
 Four points by Sheraton  
 Conservatorium Hotel Amsterdam  
 Hotel Lutetia Paris  
 Bilderberg Wientjes



Dampf is developed and manufactured in the Netherlands.



Only premium components from top brands.

# DAMPF INN audio sets

## Integrated speakers



### INN Speakers



### Technical specifications

Weight:	0.4 kg	1.08 kg	1.52 kg
Dimension:	Ø116mm(4.6") * 58mm (2.3")	Ø196mm(7.7") * 75mm(3")	Ø227mm(9") * 87mm(3.4")
Cutout Size:	Ø 100 mm (4")	Ø179mm (7")	Ø210mm(8.3")
Woofer Size:	3"	5.25"	6.5"
Tweeter Size:	0.5"	0.75"	0.75"
Freq. Response (±3db):	130 Hz-20 K Hz	70 Hz-20K Hz	60 Hz-20K Hz
Efficiency:	90dB	90dB	90dB
RMS Power:	20W	40W	60W
Nominal Impedance:	8Ω	8Ω	8Ω
Grill Colour:	any colour of RAL chart	any colour of RAL chart	any colour of RAL chart

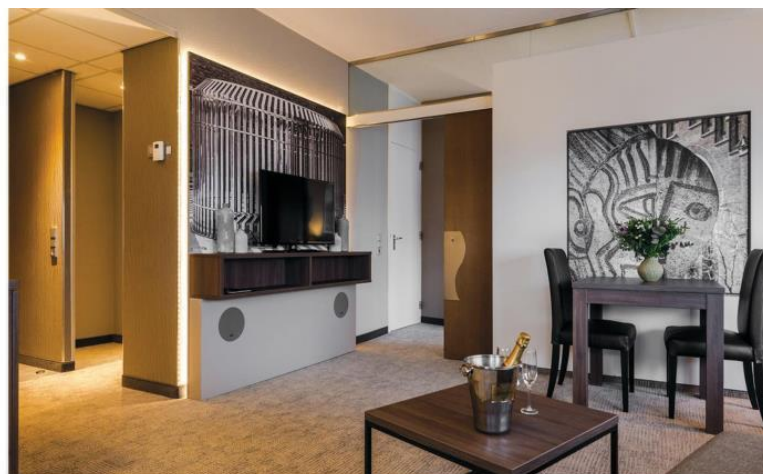
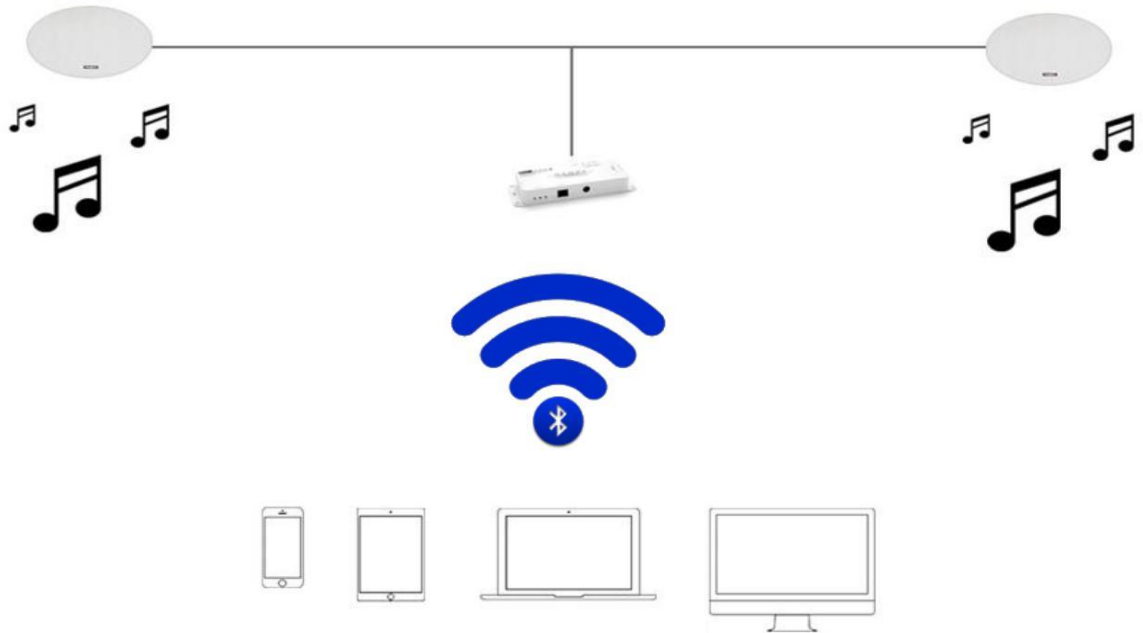
### Key features:

- Full range, 2-way Kevlar ceiling/wall speaker
- Removable grill
- Available in any RAL colour
- Dog legs for easy installation
- Kevlar woven cone woofer
- Speaker wire included
- Up to 4 speakers can be connected per system
- Available in different sizes and models depending on requirements

### 1x Dampf INN audio set includes:

- 1x Dampf Bluetooth Receiver/Amplifier
- 1-6x INN speaker
- 1x 12VDC power supply
- Speaker cable
- Room Card (for hotels)

How does INN work?



# DAMPF DOS audio set

Wall mounted speakers small

DAMPF

DOS



## Dampf DOS accessories

Wall bracket (included)



Grey, white or black desk-stand (optional)



## How does DOS work?



## Technical specifications

Weight:	1.45 kg
Dimension:	HxLxD (mm): 132x134x110
Woofer Size:	3.5"
Tweeter Size:	0.5"
Freq. Response ( $\pm 3\text{db}$ ):	110Hz – 20kHz
Efficiency:	90dB
RMS Power:	25W
Nominal low Impedance:	8 $\Omega$
Nominal high Impedance:	70V/100V line (only when using passive DOS speaker)
Colour:	Black or White

### Key features:

- Full range, 2-way loudspeaker, 25W RMS
- 3,5" woofer / 0,5" tweeter
- Made of reinforced ABS
- Available in black or white
- 8  $\Omega$  and 100 V line operating switch
- Accessories for wall-mounting included
- IP54 class outdoor rating
- Protective front grill with anti-rust treatment
- Available in black and white
- Up to four DOS speakers can be connected per system

### 1x Dampf DOS audio set includes:

- 1x Dampf Bluetooth Receiver/Amplifier
- 1-4x DOS speaker
- Wall mount
- 1x 12VDC power supply
- Speaker cable
- Room Card (for hotels)



# DAMPF ONE audio set

Wall mounted speakers large



## Dampf ONE accessories

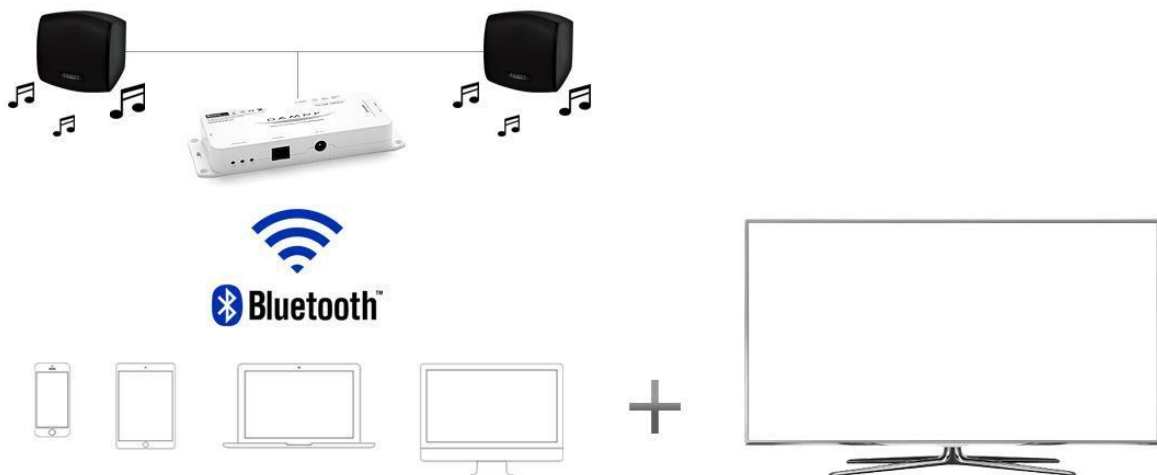
Wall bracket (included)



Grey, white or black desk-stand (optional)



## How does ONE work?



**Technical specifications:**

Weight:	2.3 kg
Dimension:	HxLxD (mm): 242x242x163
Woofer Size:	6,5"
Tweeter Size:	1"
Freq. Response ( $\pm 3\text{db}$ ):	90Hz – 20kHz
Efficiency:	92.5dB
RMS Power:	50W
Nominal low Impedance:	8 $\Omega$
Nominal high Impedance:	100V line (only when using passive ONE speaker)
Colour:	Black or White

**Key features:**

- Full range, 2-way loudspeaker, 50W RMS
- 6,5" woofer / 1" tweeter
- Made of reinforced ABS
- Available in black or white
- 8  $\Omega$  and 100 V line operating switch
- Accessories for wall-mounting included
- IP54 class outdoor rating
- Protective front grill with anti-rust treatment
- Available in black and white
- Up to four ONE speakers can be connected per system

**1x Dampf ONE audio set includes:**

- 1x Dampf Bluetooth Receiver/Amplifier
- 1-4x ONE speaker
- Wall mount
- 1x 12VDC power supply
- Speaker cable
- Room Card (for hotels)

