



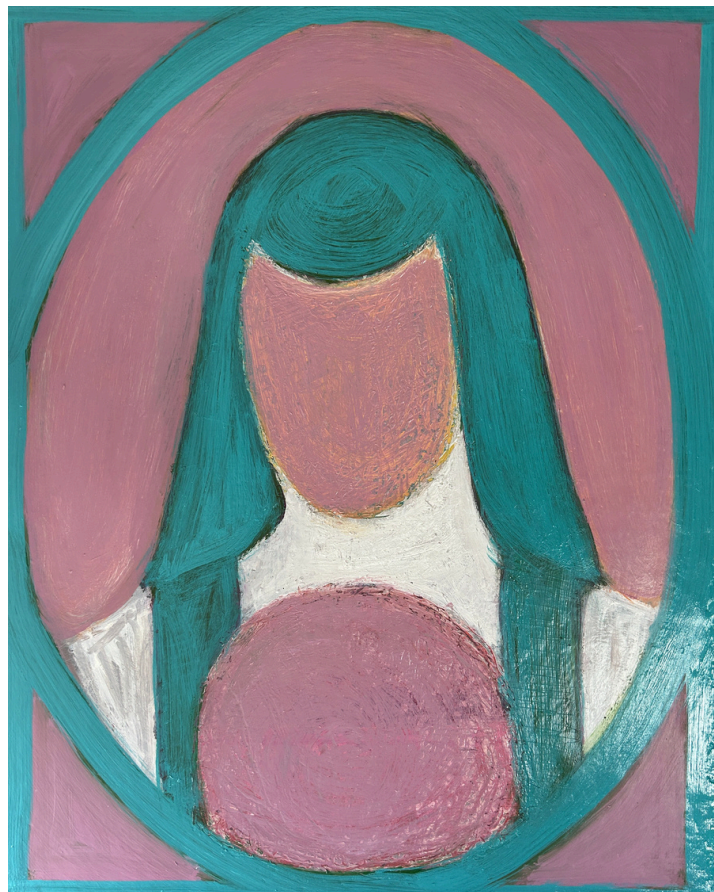
PORT- RAITS

2008-2023



Techniques employed:

- Oil on wooden panel
- Cochineal ink on paper
- Ink & wax on paper
- Ink on paper





LIGU- RIA

2025

Techniques
employed:

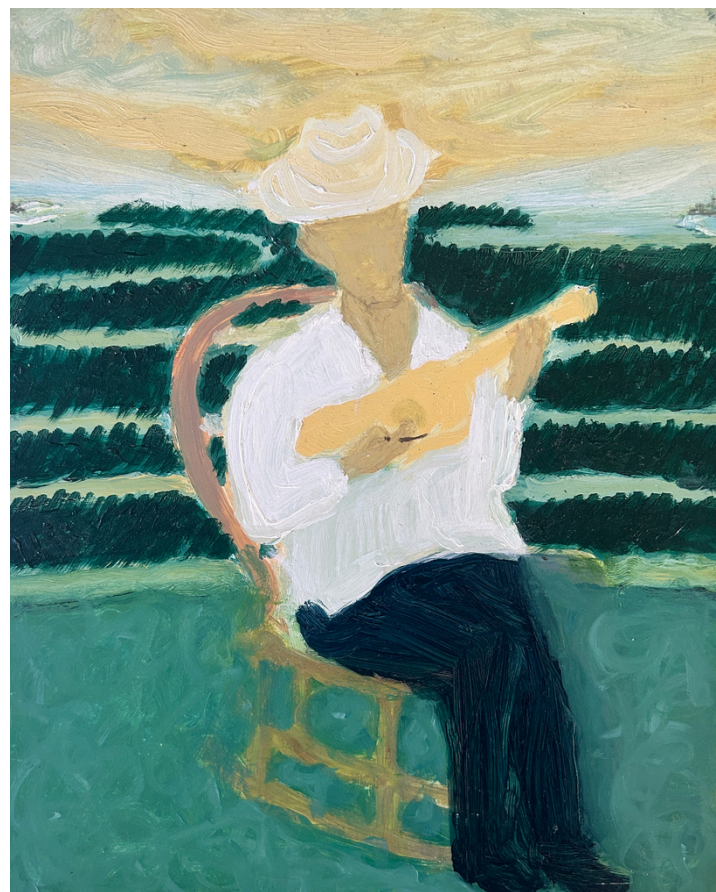
- Acrylic on
canvas
- Acrylic and
pastels on
canvas





VERA- CRUZ

2022-23



Techniques
employed:

- Oil on wooden panel
- Oil on cardboard
- Acrylic on canvas



