



SILVERI ENGINEERING & TRADING

FUEL & OIL TRANSFER | AUTO LUBE | SINGLE POINT LUBRICATORS | FIRE SUPPRESSION | WORKSHOP EQUIPMENT



LUBRICATION HOSE & FITTINGS



PRODUCT INFORMATION CATALOGUE

2023

www.silverieng.com





100-057-NUT | SE&T | HOSE STUD 45°
GROOVED | D 6 | H 24 | L 15 | HOSE Ø 4



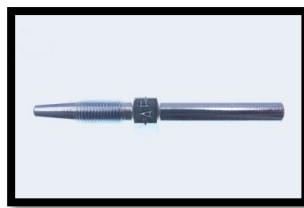
3511-116 | SE&T | HOSE STUD 90°
GROOVED, BLACK | D 6 | H 17 | L 28 |
HOSE Ø 4



100-053-NUT | SE&T | HOSE STUD 90°
GROOVED | D 6 | H 28 | L 37 | HOSE Ø 4



100-054-NUT-SW | SE&T | HOSE STUD
STRAIGHT GROOVED, BLACK | D 6 | L 52,5
| L1 21,5 | HOSE Ø 4



100-051-NUT-SW | SE&T | HOSE STUD
STRAIGHT GROOVED, BLACK | D 6 | L 61
| L1 30 | HOSE Ø 4



100-061 | SE&T | HOSE STUD STRAIGHT |
L 56 | L1 25 | HOSE Ø 4



3511-114 | SE&T | HOSE STUD 90° JIC | D
JIC 37° 7/16 | H 20,7 | L 25,7 | HOSE Ø 4



3510-114 | SE&T | HOSE STUD
STRAIGHT JIC | D JIC 37° 7/16 | L 27,5 |
SW 14 | HOSE Ø



100-050-SW | SE&T | SCREW SLEEVE
BLACK | L 28 | SW 12 | HOSE Ø 4



100-050 | SE&T | SCREW SLEEVE | L 28 |
SW 12 | HOSE Ø 4



100-001 | SE&T | 8.6MM ODX4.1MM
ID HIGH PRESSURE HOSE - 840 BAR | Ø
4 | GREASE FILLED



100-002 | SE&T | 8.6MM X 4.1MM HIGH
PRESSURE HOSE - 840 BAR | Ø 4 | UN-
FILLED

[Click on this LINK](#) for X-REF information for other brands: LINCOLN, BEKAMAX, ALEMITE, VOGAL, PIRTEK, AFLFO, IFS, GRACO



**SE-ST JIC908.6SS STAINLESS 90 DEG7/16
JIC REUSABLE HOSE END FOR 8.6; JIC
FEM 90DEG DN4 HOSE (1PC) 4.1 ID**



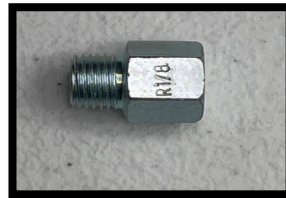
**SE-ST JIC8.6SS STAINLESS STRAIGHT
7/16 JIC REUSABLE HOSE END FOR 7/16"
JIC FEM STR DN4 HOSE (1PC) 4.1 ID**



**SE-SE SSSS STAINLESS STEEL SCREW
SLEEVE FERRULE SUIT 8.6 OD DN4
HOSE.**



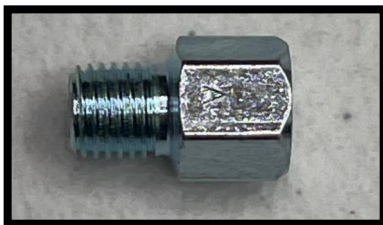
**100-141 |SE&T | ADAPTER – EXTENSION-
PIECE | G M 10 X 1 TAP | G1 M 10 X 1 L
L23 | SW 13**



**2510-106 |SE&T | ADAPTER – EXTEN-
SION-PIECE | G M 10 X 1 TAP | G1 RP
1/8 BSP L L 18 | SW 13**



**100-120 |SE&T | ADAPTER – EXTEN-
SION-PIECE | G M 6 X 1 TAP | G1 M 8 X
1 L L 19 | SW 11**



**100-130 |SE&T | ADAPTER – EXTENSION
-PIECE | G M 8 X 1 TAP | G1 M 8 X 1 L L
18 | SW 11**



**100-170 |SE&T | ADAPTER – EXTENSION-
PIECE | G M 8 X 1 TAP | G1 RP 1/8 BSP L
L 23 | SW 13**



**106-003-RVL |SE&T | NON-RETURN
VALVE 24° WITH CLAMPING RING | LL |
D 6 | G M 10 X 1 | BLK**



**106-110 |SE&T | STRAIGHT QUICK CON-
NECTOR | D 6 | L 29,5**



**106-054 |SE&T | QUICK CONNECTOR
STRAIGHT | D 6 | G R 1/8 BSP TAP | SW
12**



**106-051 |SE&T | QUICK CONNECTOR
STRAIGHT | D 6 | G M 6 X 1 TAP | SW
12 |**

[Click on this LINK](#) for X-REF information for other brands:LINCOLN, BEKAMAX, ALEMITE , VOGAL, PIRTEK, AFLFO, IFS, GRACO



**106-052 | SE&T | QUICK CONNECTOR
STRAIGHT | D 6 | G M 8 X 1 TAP | SW 12**



**106-053 | SE&T | QUICK CONNECTOR
STRAIGHT | D 6 | G M 10 X 1 TAP | SW
12**



**106-104-NPT | SE&T | ELBOW MALE
SCREW-IN FITTING | LL | D 6 | G 1/8
NPT | SW 11 | SW1 12**



**106-101 | SE&T | ELBOW MALE SCREW-
IN FITTING | LL | D 6 | G 6 X 1 TAP | SW
11 | SW1 12**



**106-105-L | SE&T | ELBOW MALE SCREW-
IN FITTING | L | D 6 | G R 1/4 BSP TAP |
SW 12 | SW1 14**



**106-104 | SE&T | ELBW MALE SCREW-IN
FITTING | LL | D 6 | G R 1/8 BSP TAP |
SW 11 | SW1 12**



**106-103 | SE&T | ELBOW MALE SCREW-
IN FITTING | LL | D 6 | G 10 X 1 TAP |
SW 11 | SW1 12**



**106-102 | SE&T | ELBOW MALE SCREW-IN
FITTING | LL | D 6 | G 8 X 1 TAP | SW 11 |
SW1 12**



**106-102-8X1,25 | SE&T | ELBOW MALE
SCREW-IN FITTING | LL | D 6 | G 8 X
1,25 TAP | SW 11 | SW1 12**



**100-823 | SE&T | ADAPTER 45° | G M 10
X 1 TAP | G1 M 8X1 | L 23 | SW 13**



**100-723 | SE&T | ADAPTER 90° | G M 10 X
1 TAP | G1 M 8 X 1 | SW 23 | SW 12**



**100-822 | SE&T | ADAPTER 45° | G M 8
X 1 TAP | G1 M 8X1 | L 23 | SW 13**

[Click on this LINK](#) for X-REF information for other brands: LINCOLN, BEKAMAX, ALEMITE, VOGAL, PIRTEK, AFLFO, IFS, GRACO



100-722 | SE&T | ADAPTER 90° | G M 8 X 1 TAP | G1 M 8 X 1 | SW 23 | SW 12



106-154 | SE&T | ELBOW QUICK CONNECTOR | D 6 | G R 1/8 BSP TAP | SW 10



106-153 | SE&T | ELBOW QUICK CONNECTOR | D 6 | G M 10 X 1 TAP | SW 10



106-151 | SE&T | ELBOW QUICK CONNECTOR | D 6 | G M 6 X 1 TAP | SW 10



106-152 | SE&T | ELBOW QUICK CONNECTOR | D 6 | G M 8 X 1 TAP | SW 10



106-114 | SE&T | ELBOW QUICK CONNECTOR PIVOTABLE | D 6 | G R 1/8 BSP TAP | SW 13



106-113 | SE&T | ELBOW QUICK CONNECTOR PIVOTABLE | D 6 | G M 10 X 1 TAP | SW 13



106-111 | SE&T | ELBOW QUICK CONNECTOR PIVOTABLE | D 6 | G M 6 X 1 TAP | SW 13



106-112 | SE&T | ELBOW QUICK CONNECTOR PIVOTABLE | D 6 | G M 8 X 1 TAP | SW 13



106-210 | SE&T | CUTTING RING | LL | D 6



100-050-SW | SE&T | SCREW SLEEVE BLACK | L 28 | SW 12 | HOSE Ø 4



100-050 | SE&T | SCREW SLEEVE | L 28 | SW 12 | HOSE Ø 4

[Click on this LINK](#) for X-REF information for other brands: LINCOLN, BEKAMAX, ALEMITE, VOGAL, PIRTEK, AFLFO, IFS, GRACO



100-003 | SE&T | PLASTIC TUBE PA 12 HL
SEMI-RIGID DIN 73378 | D 6 | S 1,5 |
BLACK | UNFILLED



100-004 | SE&T | PLASTIC TUBE PA 12 HL
SEMI-RIGID DIN 73378 | D 6 | S 1,5 |
BLACK | FILLED



100-006 | SE&T | PLASTIC TUBE PA 12
HIPHL FLEXIBLE DIN 73378 | D 4 | S
0,85 | BLACK |



100-141 | SE&T | ADAPTER – EXTENSION-
PIECE | G M 10 X 1 TAP | G1 M 10 X 1 L
L23 | SW 13



100-040 | SE&T | SPIRAL WRAP | D 6 | L
10 | S 1



100-243-SW | SE&T | CLOSURE PLUG
STEEL BLACK | G M 10 X 1 | L 4,5



106-004-NPT | SE&T | STRAIGHT MALE
SCREW-IN FITTING | LL | D 6 | G 1/8 NPT
| SW 11 | SW1 12



106-001 | SE&T | STRAIGHT MALE
SCREW-IN FITTING | LL | D 6 | G M 6 X
1 TAP | SW 11 | SW1 12



106-002 | SE&T | STRAIGHT MALE
SCREW-IN FITTING | LL | D 6 | G M 8
X 1 TAP | SW 11 | SW1 12



106-003 | SE&T | STRAIGHT MALE SCREW-
IN FITTING | LL | D 6 | G M 10 X 1 TAP |
SW 11 | SW1 12



106-004 | SE&T | STRAIGHT MALE
SCREW-IN FITTING | LL | D 6 | G R 1/8
BSP TAP | SW 11 | SW1 1



106-005 | SE&T | STRAIGHT MALE
SCREW-IN FITTING | LL | D 6 | G R
1/4 BSP TAP | SW 11 | SW1 12

[Click on this LINK](#) for X-REF information for other brands: LINCOLN, BEKAMAX, ALEMITE, VOGAL, PIRTEK, AFLFO, IFS, GRACO



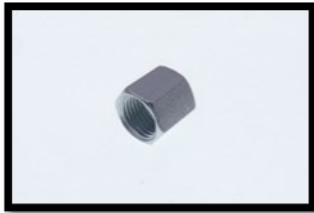
106-000 | SE&T | STRAIGHT TUBE CON-
NECTOR | LL | D 6 | D1 6



106-221-L | SE&T | BULKHEAD STRAIGHT
| L | D 6 | L 48



106-300 | SE&T | EQUAL TEE CON-
NECTOR | LL | D 6



100-006 | SE&T | COUPLING NUT 24° | LL
| D 6 | SW 12

[Click on this LINK](#) for X-REF information for other brands: LINCOLN, BEKAMAX, ALEMITE, VOGAL, PIRTEK, AFLFO, IFS, GRACO

GREASING BLOCKS



GREASING BLOCK 1	100-210-1	G M 10 x 1 D 2 x 6,5 20x20
GREASING BLOCK 1	5029-111	G 1/8 BSP D 2 x 6,5 20x20
GREASING BLOCK 2	100-210-2	G M 10 x 1 D 2 x 6,5 20x20
GREASING BLOCK 2	5029-112	G 1/8 BSP D 2 x 6,5 20x20
GREASING BLOCK 3	5029-103	G M 10 x 1 D 2 x 6,5 20x20
GREASING BLOCK 3	5029-113	G 1/8 BSP D 2 x 6,5 20x20
GREASING BLOCK 4	5029-114	G 1/8 BSP D 2 x 6,5 20x20
GREASING BLOCK 4	5029-124	G 1/8 NPT D 2 x 6,5 20x20
GREASING BLOCK 5	5029-115	G 1/8 BSP D 2 x 6,5 20x20
GREASING BLOCK 6	5029-116	G 1/8 BSP D 2 x 6,5 20x20
GREASING BLOCK 6	5029-126	G 1/8 NPT D 2 x 6,5 20x20
GREASING BLOCK 9	5029-119	G 1/8 BSP D 2 x 6,5 20x20
GREASING BLOCK 9	5029-129	G 1/8 NPT D 2 x 6,5 20x20
GREASING BLOCK 1 - 316	5029-211	G M 10 x 1 D 1 x 6,5 25x25
GREASING BLOCK 1 - 316	5029-311	G 1/8 BSP D 1 x 6,5 25x25
GREASING BLOCK 1 - 316	5029-301	G 1/8 BSP D 2 x 6,5 25x25
GREASING BLOCK 2 - 316	5029-212	G M 10 x 1 D 2 x 6,5 25x25
GREASING BLOCK 2 - 316	5029-312	G 1/8 BSP D 2 x 6,5 25x25
GREASING BLOCK 3 - 316	5029-213	G M 10 x 1 D 2 x 6,5 25x25
GREASING BLOCK 3 - 316	5029-313	G 1/8 BSP D 2 x 6,5 25x25
GREASING BLOCK 4 - 316	5029-214	G M 10 x 1 D 2 x 6,5 25x25
GREASING BLOCK 4 - 316	5029-314	G 1/8 BSP D 2 x 6,5 25x25
GREASING BLOCK 5 - 316	5029-215	G M 10 x 1 D 2 x 6,5 25x25
GREASING BLOCK 5 - 316	5029-315	G 1/8 BSP D 2 x 6,5 25x25
GREASING BLOCK 6 - 316	5029-216	G M 10 x 1 D 2 x 6,5 25x25
GREASING BLOCK 6 - 316	5029-316	G 1/8 BSP D 2 x 6,5 25x25
GREASING BLOCK 8 - 316	5029-218	G M 10 x 1 D 2 x 6,5 25x25
GREASING BLOCK 8 - 316	5029-318	G 1/8 BSP D 2 x 6,5 25x25

CROSS REFERENCE CHART

The chart has been provided for purpose of guiding customers for quick-reference in order to assist in identifying parts for other product brands.

Every effort has been made in order to ensure accuracy.

[Click on this LINK](#) for X-REF information for other brands: LINCOLN, BEKAMAX, ALEMITE, VOGAL, PIRTEK, AFLFO, IFS, GRACO

SILVERI ENG	LINCOLN	BEKAMAX	ALEMITE	VOGAL	PIRTEK	AFLO	IFS	GRACO
106-101	02-223-13023-2	04012200406	CE6M6	406-445	PCL10510	LC-99-CF906M	12-CLME06M06	17R574
106-102	02-223-13023-3	04012200506	CE6M8	406-435	PCL10513	LC-99-CF908M	12-CLME06M08	17R576
106-102-8x1,25	02-223-13763-4							
106-103	02-223-13021-3	04012200306	CE6M10	406-425	PCL10506	LC-99-CF9010M	12-CLME06M10	17R578
106-105-L	02-223-12380-6			406-415W	PCL10601			17R572
106-104	02-223-12485-9	04012200606	CE6B18	406-455W	PCL10605	LC-99-CF901/8	12-CLME0602	17L546
106-001	02-223-12533-9	04012000406	CS6M6	406-443	PCL10107	LC-99-SCF6M	12-CLMC06M06	17R573
106-002	02-223-13023-1	04012000506	CS6M8	406-433	PCL10110	LC-99-SCF8M	12-CLMC06M08	17R575
106-003	02-223-12271-7	04012000306	CS6M10	406-423	PCL10105		12-CLMC06M10	17R577
106-006-L								
106-005	02-223-12477-8			406-513W	PCL10201	LC-99-SCF1/4		17R571
106-004	02-223-12270-7	04012000606	CS6B18	406-423W	PCL10207	LC-99-SCF1/8	12-CLMC06M02	17L548
106-210	02-223-12295-2	04031520305			PCL12005	LC-99-CO	12-CLTO	
100-050	02-432-23031-1	100121200	HSL83	853-540-010	PCL39201	LC-99-SS	12-CLSLEEVE	
100-050-SW	02-432-23031-1	100121200	HSL83			LC-99-SS	12-CLSLEEVE	17L648
100-057-NUT	02-532-32183-1			853-380-004		LC-99-HS456MCG	12-CLPHS45-25	
3511-116	02-532-30739-1			853-380-003				17R566
100-053-NUT	02-532-30738-1				PCL39229		12-CLPHSE-37	
100-054-NUT								
100-051-NUT								
100-050	13-432-23031-7/16				PCL39201		12-CLSLEEVE	
3510-114	13-432-24162-7/16	BT0544	HSTJ716		PCL10311	LC-98-BT0544	12-CLH08J07	
3511-114	13-532-30738-7/16	BT0566			PCL10312	LC-98-BT0566		
106-300	02-223-12484-9			406-407			12-CLT06	
106-000	02-223-12482-9	04013600306		406-406	PCL10801	LC-99-C6M	12-CLJ06	
106-221-L	02-223-12368-4	04014701006		406-416	PCL11201	LC-99-BHS6M	12-CLBTJ06	
100-061						LC-99-HSS08M		
100-120	02-304-19787-1						12-CLASM06M08-19	
100-130	02-712-12723-7							
100-170	02-304-19167-1							
100-141	02-304-19509-1	4011600206			PCL12607			
2510-106	02-304-19230-1							
100-722	02-432-24043-1				PCL13403		12-CLA90M08M08	
100-723	02-432-24052-1				PCL13405			
100-822	02-432-24050-1	100210085			PCL13106		12-CLA45M08M08	
100-823	02-432-24051-1	100210080			PCL13102		12-CLA45M10M08	
106-051	02-226-13752-8	04062326-HP			PCL14102	LC-99-PISC6M	12-CLPMC06M06	
106-052	02-226-13752-7	04062322-HP			PCL14101	LC-99-PISC8M	12-CLPMC06M08	
106-053	02-226-13752-6	04062324-HP			PCL14103	LC-99-PISC10M	12-CLPMC06M10	
106-054	02-226-13752-9	04062348-HP			PCL14104	LC-99-PISC1/8	12-CLPMC0602	
106-151	02-226-13753-7	04062330-HP			PCL14202	PL-99-PIEC906M	12-CLPME06M06	
106-152	02-226-13753-8	04062332-HP			PCL14201	PL-99-PIEC908M	12-CLPME06M08	
106-153	02-226-13753-6	04062334-HP			PCL14203	PL-99-PIEC9010M	12-CLPME06M10	
106-154	02-226-13753-4	04062328-HP			PCL12404	PL-99-PIEC901/8	12-CLPME0602	
106-111	02-226-13756-7					PL-99-PISWC906M	12-CLPME06M06S	
106-112	02-226-13756-4					PL-99-PISWC908M	12-CLPME06M08S	
106-113	02-226-13756-5					PL-99-PISWC9010M	12-CLPME06M10S	
106-114	02-226-13756-8					PL-99-PISC901/8	12-CLPME0602S	
106-110	02-226-13773-3					LC-99-PIC6M	12-CLPJ06	
106-003-RRV				VPKM-RV-S4				
106-003-RVL	02-504-30344-4							