



CHALET MANUAL



Chalet Guide – Spa on the River – Scott

Hello and welcome to Chalet Scott!

Thank you for choosing our chalet. We hope you have a stay that meets your expectations! This manual is intended to be a reference tool during your stay at our chalet. You will find a range of information that will be useful if you have any questions.

The Chalet

The chalet is located at 42 Chemin de la Traverse, Scott, Quebec, G0S 3G0.

- **Arrival Time:** From 5:00 PM
- **Departure Time:** Before 11:00 AM

Contact Us

You can reach us at any time via the following contact information:

- **Cell Phone:** (1-418) 931-7589. Available for calls or text messages.
- **Landline:** (1-418) 648-9490. Available for calls only.
- **Email:** locations@gestionchouinardvoyer.com or louise.chouinard@gmail.com

High-Speed Internet

The chalet is equipped with high-speed Telus Wi-Fi.

- **Network Name:** TELUS4334
- **Network Password:** henri422

Access to the Chalet – The Key

Upon arrival at the chalet, the key will be located in the secure box illustrated below.



The 4-digit access code will be provided to you via email after the full payment of your stay. Upon arrival, you can enter this code and lower the black lever to obtain the key.

Barbecue

In spring, summer, and fall, you will find two propane tanks for the BBQ at the chalet. In the rare event that you run out of propane, you can either refill the tanks or exchange an empty one for a full one at the local convenience store. Just keep your receipt and send it to us at locations@gestionchouinardvoyer.com or louise.chouinard@gmail.com.

We will reimburse you upon receipt. The BBQ's electric starter might be faulty, as they struggle to survive the winters. A long-handled lighter will be provided at the chalet to light the BBQ manually.

Entertainment

The chalet is equipped with a smart TV connected to the internet. Netflix access will be provided for free as the chalet no longer has a DVD/Blu-Ray player. A cable decoder with access to a large selection of channels will also be provided. Books by major authors and board games are available for your enjoyment.

Sanitary Facilities

The chalet is not connected to the municipal sewer system. Therefore, please ensure that only toilet paper is disposed of in the toilets.

- No tissues
- No wet wipes
- No makeup remover pads
- No feminine hygiene products
- No other products other than the toilet paper provided by the owner

Provided Equipment

The chalet is fully equipped. You only need to bring your groceries; we take care of the rest!

- Basic food items such as flour, salt, pepper, spices, etc., are provided and should be in sufficient quantity upon your arrival. However, we do not guarantee them.
- Shampoo, conditioner, and body soap are provided.
- Complete bedding is provided, including indoor towels.

Bedding – Sheets and Blankets

Upon arrival, you will find a bag on each bed. This bag contains all the sheets and blankets necessary for that bed. You can make the beds as needed during your stay. Upon departure, simply strip the used beds and leave the sheets and blankets on the beds.

Towels

Indoor towels are provided for the chalet. Before leaving, if possible, we ask you to wash and dry the towels you have used. If you are unable to wash and dry the towels, please leave them on the used beds.

Parking

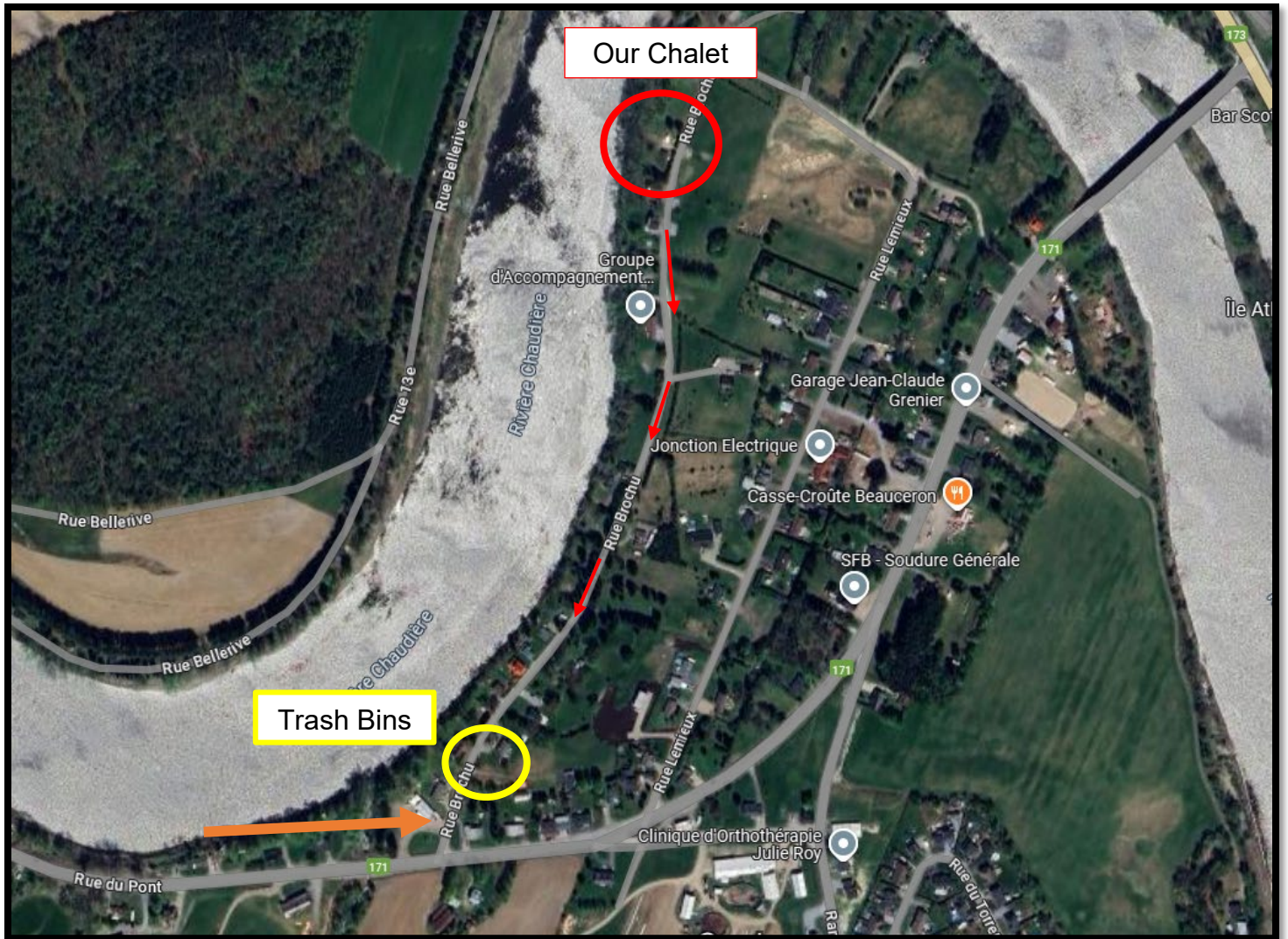
Parking for your cars should be in the gravel/dirt area of the entrance. Parking is not allowed on the lawn.

Heat Pump – Air Conditioning and Auxiliary Heating

The procedure for operating the heat pump effectively is located on the refrigerator at the chalet. You can refer to it when you arrive. Note that in winter, the heat pump will stop functioning when the ambient temperature reaches -15 degrees Celsius. At that time, use only the electric heating.

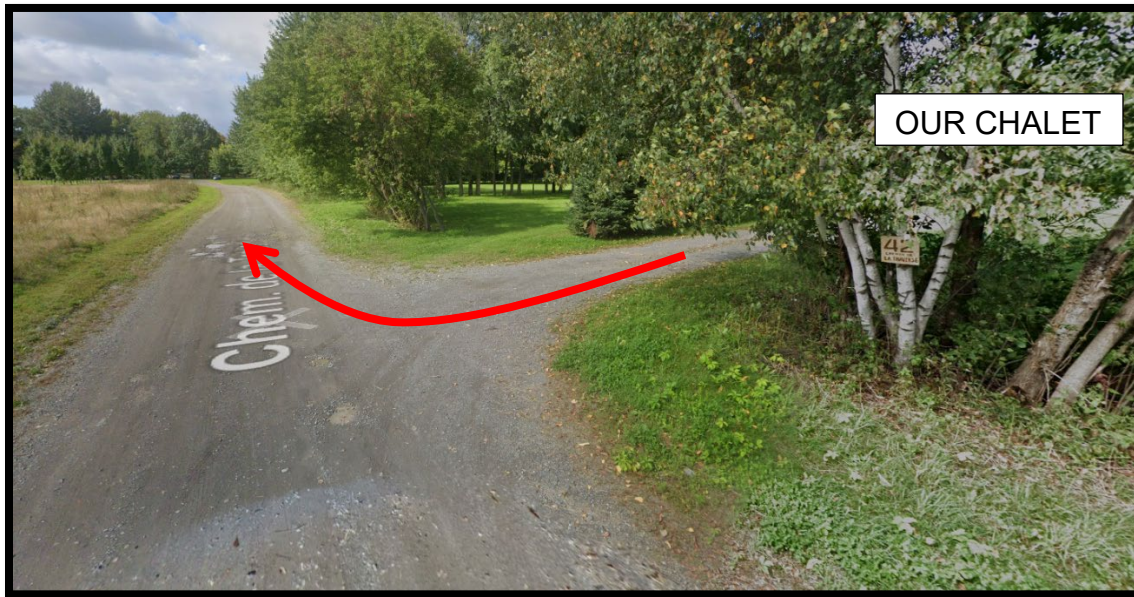
Waste – Trash and Recycling

Since our chalet is located in a recreational area, garbage and recycling collection service is not offered directly at the chalet. You will need to take your waste and recycling to the communal bins located on Brochu Street near the intersection with Route du Pont (Route 171). The location of the trash bins is marked on the map below with a yellow circle, while the recycling bin is marked with an orange arrow.



To easily reach the different bins, here are the directions:

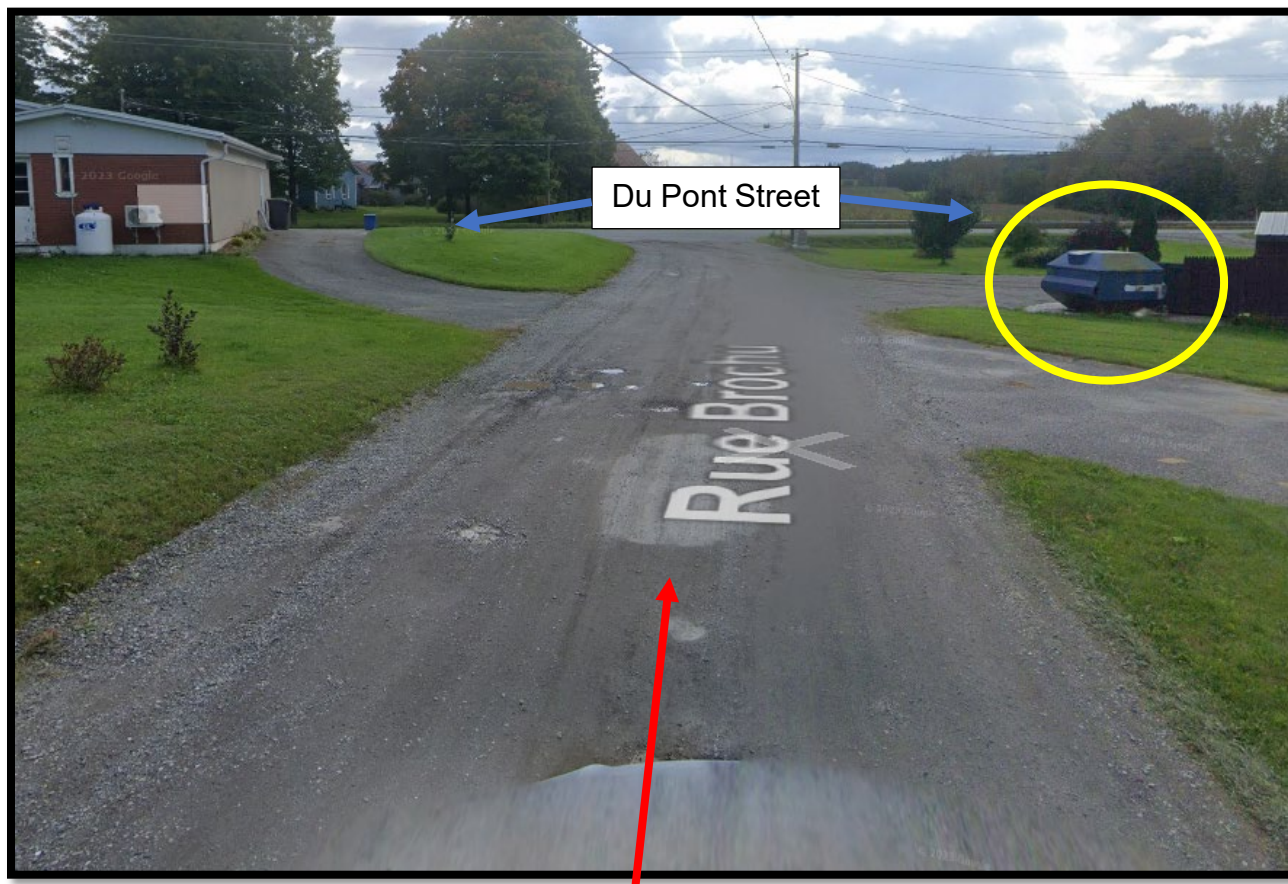
1. When you exit the chalet parking lot, turn right onto Chemin de la Traverse.



2. Follow Chemin de la Traverse until you see the bins below on your left.
These are the trash bins only.



3. Finally, continuing towards Route du Pont, you will find the recycling bin on your right.



La Rivière-Chaudière – Proximity (Danger)

Our chalet is located directly along the Chaudière River. It is both majestic and dangerous. No access to the river should be attempted, and a minimum distance of several meters should be maintained between you and the riverbank at all times to avoid any unfortunate accidents.

Parents must exercise constant supervision of their children outdoors to prevent any accidents. Several access points to the river have been developed by the municipality and/or local residents.

It is possible to swim or engage in paddleboarding, kayaking, motorized sports, etc., but not from our property. Gestion Chouinard-Voyer Inc. assumes no responsibility in this regard.

Indoor Wood Fireplace

Firewood for the indoor fireplace is not provided unless otherwise agreed with the owner. If you wish to light fires indoors, please use wood specifically intended for this purpose.

The wood provided for the outdoor fireplace should not be used indoors. It is wet and of lower quality, and burning it indoors would produce intense black smoke and cause damage that will be cleaned at the tenant's expense. Please do not burn more than 2-3 logs at a time in the indoor fireplace.

A metal ash bucket will be provided to clean the fireplace after use. You will be responsible for the use of the fireplace.

Outdoor Wood Fireplace

Firewood for the outdoor fireplace is not provided by default. However, we will try to supply you with enough for your stay. If you run out of wood, please let us know, and we will arrange for more to be delivered as quickly as possible. In Quebec, SOPFEU manages the risks and restrictions related to outdoor fires. If you wish to light a fire outdoors, you must do so in the designated space (brick fireplace).

It is mandatory to use the spark screen. You should also ensure that it is allowed via the following site: SOPFEU | Restrictions. Gestion Chouinard-Voyer Inc. assumes no responsibility in this regard. The tenant assumes all risks and civil liabilities related to any outdoor fires they may light.

Quality of Life Regulation – Municipality of Scott (RM 454-2022)

The Municipality of Scott wants everyone residing in its territory, whether temporarily or permanently, to be well informed about its quality of life regulations. As a tenant of Chalet Scott – Spa on the River, you must consult and adhere to the regulation during your stay.

You received this regulation in PDF format (GCV_004) when you made your reservation. The regulation can be found at the following address:

[Adoption-reglement-454-2022.pdf \(municipalitescott.com\)](#)

www.municipalitescott.com/wp-content/uploads/2022/08/Adoption-reglement-454-2022.pdf