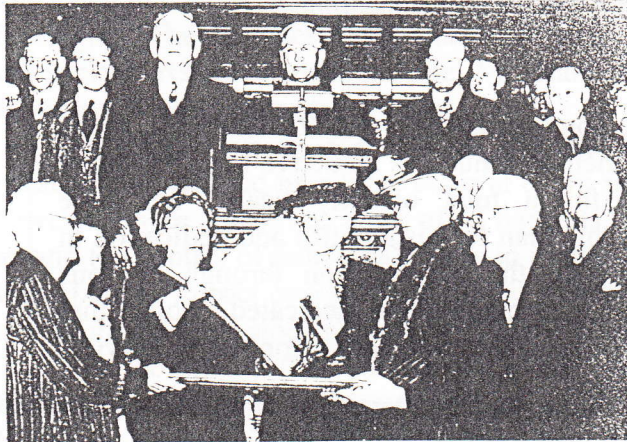


spiritual crisis that was coming with World War II. During the war, the Church was the anchor that helped the people through this time of shock, grief and loss for the congregation, the city and the world. As time went on, Central began to strengthen and times became financially better. When the war was over, the Church helped people return to normal life.

Over the years, the mortgage debt was removed and the mortgage burned on Monday May 3rd, 1948. It was now possible to start to replace, to repair and to improve. Many special bequests and donations were given. The heating system of the whole building which consisted of several hand-fired furnaces was worn out and was a fire hazard. Murray Stewart was chairperson of this undertaking and in 1949 a new, modern system was installed for \$20,000. It was even controlled by a thermostat!



THE MORTGAGE BURNING

Mrs. Wear, the mother of Jim & Tom was given the honour of placing the mortgage in the fire.

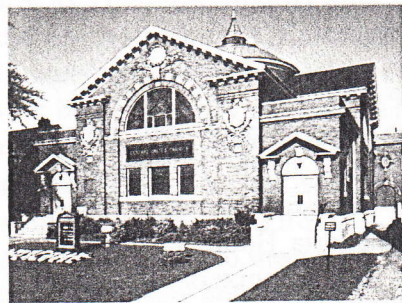
DATE:

MAY 3RD, 1948

Dr. Mick, minister

Dr. King, organist

Due to a donation from Mr. and Mrs. W.J. Garrett, a small chapel was made from two of the Sunday school classrooms. In 1959, Mrs. T. Ouellette donated the money for new chandeliers in the sanctuary in memory of her husband. About the same time, donations from the Gundy Estate paid to replace paneling. The Cherney estate paid for a Pulpit and Communion Table.



Central United had become the "Mother Church" in this area for the United Church of Canada. At that time it had the largest auditorium and the most up to date equipment.

Most importantly, the congregation was eventually able to have a special memorial tribute to the young men from the congregation who were cut off in their prime as they gave their lives in the cause of freedom during the two world wars. After each war, the finances had not been available to do this. Now things were a little different.

No one had forgotten that during the First World War, many of Central's young men died on the battlefield. Memorial services were held in the church whenever a son was killed. As well, during other conflicts more of the young men of the congregation were lost in battle. Thus, in 1959, they decided to dedicate a specific place as a Memorial Centre. Mr.

and Mrs. W.H. Downey and their daughters Mrs. G. Thomas and Mrs. N. V. Roe and their husbands had offered to donate money for this memorial. The decision was made to place the memorial in the North-East corner of the sanctuary. This was designed and built.

Two bronze plaques were placed "in proper order" and "suitable wood trim" finished it. A stained glass window was installed which lights up from within. It is called "The Remembrance Corner." Two brass vases were the gift of Mrs. Arthur J. Welsh. One is inscribed in memory of her brother, Captain James S. Wear. The other is in memory of her husband, Arthur J. Welsh and her mother and father, Mr. and Mrs. Thomas J. Wear.

This corner has become important to the congregation because the first plaque commemorates those lost in the First World War and the second one recognizes the great sacrifices made by our young men in the Second World War. It is a visible reminder of the sacrifices that have been made for the cause of peace and freedom. They paid such a high price on our behalf!

IN MEMORY OF THE FALLEN IN WORLD WAR I



TO THE GLORY OF GOD

And in the Memory of the Men of this
Congregation who died in the Great War
during the years 1915-1918
for Faith and Freedom

CAPTAIN JAMES SYMINGTON WEAR
20th Batt. Courcellette, Sept. 15, 1918

PRIVATE JAMES ROY MATTHES
19th Batt. Courcellette, Oct. 1 1916

LIEUTENANT LINCOLN GEORGE HUTTON
1st Batt. Souchez, Dec. 13, 1916

SERG. MAJOR VIVIAN EGERTON CADMAN, W.O.
Can. A.M.C. Can. No.2 Stat. Hospital, Dec. 28, 1916

CORPORAL ALBERT E. LIPSEY
20th Batt. Amiens, Aug. 8, 1918

PRIVATE JOHN ALEXANDER BRETT
15th Batt. Keithwood, Sept. 27, 1918

PRIVATE EDWIN ROSSLYN FLEMINGTON
44th Batt. Cambrai, Sept. 28, 1918

PRIVATE JAMES CARMAN HUSSER
Can. Engineers, died in hospital, Oct. 18, 1918

LIEUTENANT PERCY CHARLES HEATHERS
R.A.F. died in hospital, Feb. 22, 1918

IN MEMORY OF THE FALLEN IN WORLD WAR II



MEMORIAL.— This is the special "Corner of Remembrance" recently unveiled at Central United Church in honor of those members of the congregation who gave their lives in both World Wars. Rev. J. W. Houston is reading the plaque on the left, inscribed: "To Our Heroic Dead," which lists those who died during World War II. On the right, inscribed "To the Glory of God," is the list of casualties from World War I. The stained glass window in the centre consists of a figure in robes, symbolizing peace and faith.

THE PLAQUES TO OUR HEROIC DEAD 1939-1945

RONALD MEASOR, LAC. Aug. 30, 1941	ARTHUR G. HURD, TPR. Dec. 9, 1943
THOMAS E. ELLIOTT, FLT. SGT. Nov. 8, 1941	JOHN C. McNARY, P/O May 2, 1944
CARMEN E. POST, PTE Aug. 19, 1941	STANLEY W. SMITH, P/O May 29, 1944
MERWYN R. THOMPSON, P/O Jan. 23, 1943	JOHN A. CUROE, PTE. Aug. 4, 1944
JACK MEASOR, SGT. May 4, 1943	DONALD R. SMITH, L/CPL Aug. 23, 1944
ROLPH H. KING, W/O June 23, 1943	CHARLES M. KENDALL, F/O Nov. 21, 1944
JAMES RONALD LONG, ABS. Sept. 20, 1943	GEORGE M. FIFE, F/O Jan. 12, 1945
J.A. KENNEDY, SPR Oct. 26, 1943	C. WILLIAM FRASER, P/O Mar. 11, 1945

IN LOVING GRATITUDE

Several years later, in time for Canada's Centennial, 1967, The Pioneer Corner was built in the opposite corner to that of the Memorial Corner. "The Sower" window was placed in gratitude to God for the rich and abundant heritage handed down by those who have worshipped here in years past. The Congregation and the whole community of Windsor have been enriched by this. The window was designed in Canterbury, England, and portrays the birds and flowers of Essex County. The words of St. Paul, 1 Cor: 3:5, "...I planted, Apollo watered, but God gave the increase," are inscribed on it. It is here that the Memorial Book is placed that is a record of all the donations of special gifts and endowments that have been given for the ongoing work of our Church.



The Centennial

Anniversary 1967

MARKING THE 163RD YEAR OF SERVICE TO
THE COMMUNITY OF WINDSOR, ONTARIO
BY THE NOW, CENTRAL UNITED CHURCH

Service of Dedication

Of The Pioneer Corner

Sunday, Oct. 22ND, 1967

PIONEER CORNER

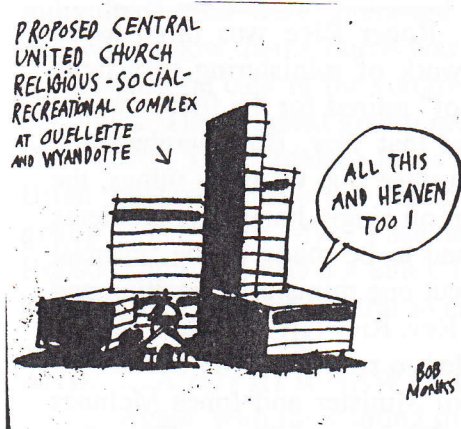
COMMEMORATING ALL WHO HAVE SERVED
OUR MASTER IN THIS PLACE SINCE THAT
FIRST SERVICE IN 1804

Built of oak with natural finish and located
in the south east corner of the sanctuary.

It matches the design of the Remembrance Corner to make a
matched pair.

CENCOURSE

In 1974, during the ministry of Rev. Don Wilson, the next massive renovation was undertaken. It had become obvious that a great many repairs were needed not only to the sanctuary but also to Wesley Hall. It was a dream of Rev. Wilson to do something more with the aging Wesley Hall facility than just surface repairs. He shared his dream with the Executive and thus began a mammoth project that was first called "Project Central Concourse." At the onset, many people wondered if it could work. Others scoffed. Still others were just plain envious. Many chuckled when it hit "bumps in the road." A cartoon in the Windsor Star summed up some of the attitudes of the community. It could probably be likened to Noah building his Ark in the desert. At one point the rules for the CMHC funding were changed and nearly ended the endeavor. However, there was much needed and timely intervention by the Hon. Herb Gray. After a great deal of planning, and with the tremendous dedication of a group of the executive of the board (Allen C. Brown, Dr. J.E. Prince, Dr. John Hoffman, Cec. Tucker, Norm Kelk, Rev. Don Wilson and Rev. Florence Hunter), the project slowly proceeded. It was led by a capable businessman, Victor Childerhose. By this time, it was called, The Cencourse Project.



The total commitment required for this project was estimated to be \$332,000. This was a staggering amount of money and certainly a long way from the emergency that was encountered in 1904 after the fire. It was even more overwhelming than the impending disaster with the finances in 1929-1934. Understandably, there was great trepidation. At this time, Rev. Don Wilson was the minister and was a man of great vision and faith. He was also supported by an executive who could see the possibilities and had the business knowledge that would be needed.

Thus, in spite of the difficulties, and with the aid of Canada Mortgage & Housing of Government Canada, under the spiritual guidance of Rev. Don Wilson and the astute business abilities of Victor Childerhose, it was finished in 1980. Finally! Norm Kelk, who had been active from the beginning, became chairperson of the board of Cencourse. This is a position that he still holds.

These dedicated individuals worked for ten long years to see their dream



VICTOR
CHILDERHOSE



NORM
KELK

CECIL
G.
TUCKER



DR. JOHN
HOFFMAN



DR. J. E
PRINCE



REV. DON
WILSON



REV.
FLORENCE
HUNTER

It must be stated that the overall endeavor did take a large toll on the physical health of those leaders. Don Wilson was very seriously impacted and had near-fatal heart problems in 1980 because he was not only "knee-deep" in the "project" but, at the same time, ministered to an 800 plus congregation. He was blessed to have Rev. Florence Hunter

“soldiering” beside him and assistance from his sister, Rev. Nettie Hoffman, nevertheless, he was the leader of the team and the one bearing the major burden.

PROPOSED CENCOURSE PROJECT



In 1981, major changes began to take place. Rev. Roger Rice was hired as an assistant minister to help Rev. Wilson with the ongoing work of ministering to a large congregation. At the same time, Rev. Florence Hunter “sort of” retired for the first time and began her ministry to Cencourse residents. In September of that year, Bob Barnhart, the organist, left. During 1982, financial difficulties began to surface due to many things, the economy; the major commitments that the Church had taken on single-handedly; problems in personnel, etc. It was decided that significant changes had to be made in the financial structure in order to survive. One of the first things was to cut one ministerial position and have visitation and some other duties covered by volunteers. Rev. Rice left in 1982.

Rev. Wilson’s health was deteriorating and he decided to retire in 1983 because of these health problems. Rev. Nettie Hoffman became Interim Minister and Innes McInnes became visitation minister. Barbara Alderidge was hired as Director of Music. For a few months in 1984, Rev. John Sloan took over as Interim Minister.

In May, 1985, Rev. Donald Hull became the Senior Minister. During the summer, Barbara Alderidge quit her position as Music Director and Ruth Lavery took over as interim Director of Music in August. In December, her position was confirmed as the permanent Minister of Music.

Things began to thrive, again. The congregation grew, the choir grew, the Sunday school grew. It was decided in 1989 that perhaps an assistant was needed for Rev. Hull since he was also pursuing his doctorate (as was the organist). The Rev. Bea Ash came as the assistant. This was a crucial time because it was the year that the congregation of Giles Blvd. United had applied and the offer was accepted to reunite with its mother congregation. This meant that there would be a sudden inclusion of a new group of parishioners grieving over the necessity of giving up the struggle and closing their beloved church.

The new group brought with it the 3rd Scout Troop. This proved to be a bit of a planning challenge given the fact that the Cencourse situation was not conducive to cubs and scouts running through the meeting rooms. Nevertheless, the merger was completed rather successfully as the people gradually assimilated.

Not long after this merger happened, Calvary United, the other sibling congregation to which Central had given birth, closed and some of the members from there came to join "the mother" congregation. These were interesting days but they were working well until Rev. Hull, after much soul-searching, decided to return to the Anglican Church. The charge was declared vacant and cleared which meant that Rev. Ash left, as well.

ANOTHER NEW BEGINNING

In 1990, Central was without a minister, but it kept open and functioning with the use of talented, qualified lay persons from its own congregation until Rev. Gani Lazaro was appointed as the Interim Minister. Then, just as things were proceeding in the search for a new minister, the Chairperson of the Board, Lloyd Lavery, died in February 1991. Sue Riseborough, the previous Chairperson valiantly stepped in and took over. Rev. Gani blessed us with his presence and his healing spirituality until Rev. Craig Drummond was called.

THE PASTORAL CARE TEAM

One of the groups that started when Rev. Nettie Hoffman and Innes McInnis were overseeing the congregation was the Pastoral Care Team. This was a group of dedicated individuals who were interested in visitation of the sick and the care of members who needed to know their Church was interested in them. Innes trained the group to visit and the proper pastoral care of the congregation. This tradition of lay persons visiting members still continues. **The original group members were:** Edna McLeod (deceased), Maxine Snedden, Bob Gilroy, Bob Erdelan, Ernie Marks (deceased), Betty Rutherford, Katherine Shepherd, Brian Lochhead, Georgia Campeau, Myra Fazekas and Jim Wear. **More recently, the group consists of:** Myra Fazekas, Kay Christie, Millie Davies, Sheldon Gould and Marj Robson (until she was not able). I am sure that this continuing tradition plays a large role in keeping the family of Central so caring and close to one another

AND,ANOTHER NEW BEGINNING

Again, with the coming of Craig Drummond a circle has been completed. Craig was one of Central's own candidates for ministry. He was ordained in a service at Central in 1978. He is still the Pastor in 2004. From the time that Craig arrived, he has had an uphill struggle for many reasons. **First**, all downtown churches have to redefine themselves and their ministry in the present situation; **Second**, lack of parking in downtown areas plagues the congregation; **Third**, the ethnic culture of the area is changing; **Fourth**, the social culture of the downtown is changing drastically. The challenge is how to respond to these dramatic changes in meaningful ways as we realize how desperately the presence of the Church of Jesus Christ is needed in this confused, downtown situation. Some new outreach programs have been initiated, such as, "Baby Formula Program;" Vacation Bible School in the summer; changing the traditional Lenten Wednesday service and lunch to a Bible Study and lunch this year. Other important additions are the monthly Prayer and Healing service and the regular inclusion of "The Prayers of the People" (requests on behalf of individuals who are sick or in need of a special "touch" from God) in the Sunday service. We are striving to measure up to these tasks. The tireless, continuous work of the members is incredible. Some of the most outstanding in this category must be highlighted for posterity.