

## **Defined Precinct Boundaries for MVVCSO Voting Membership**

Voting Membership eligibility within the Montezuma Valley Volunteer Community Service Organization (MVVCSO) shall be limited to residents within the geographical area ("Precinct") described by the following boundaries:

### **West Boundary:** (illustration 2)

Commencing at the Grapevine Canyon Road intersection with County Highway S22 (approximate coordinates 33.212566, -116.564884), extending eastward.

### **East Boundary:** (illustration 3)

Commencing at the Jasper Trail intersection providing access to Grapevine Canyon from County Highway S22 (approximate coordinates 33.210537, -116.491476), extending westward.

### **North Boundary:** (illustration 4)

Commencing at the San Ysidro Mountain landmark (approximate coordinates 33.253091, -116.498830), extending southward.

### **South Boundary:** (illustration 5)

Commencing at the outer perimeter of the property located at 37620 Montezuma Valley Road (approximate coordinates 33.169260, -116.520066), extending northward.

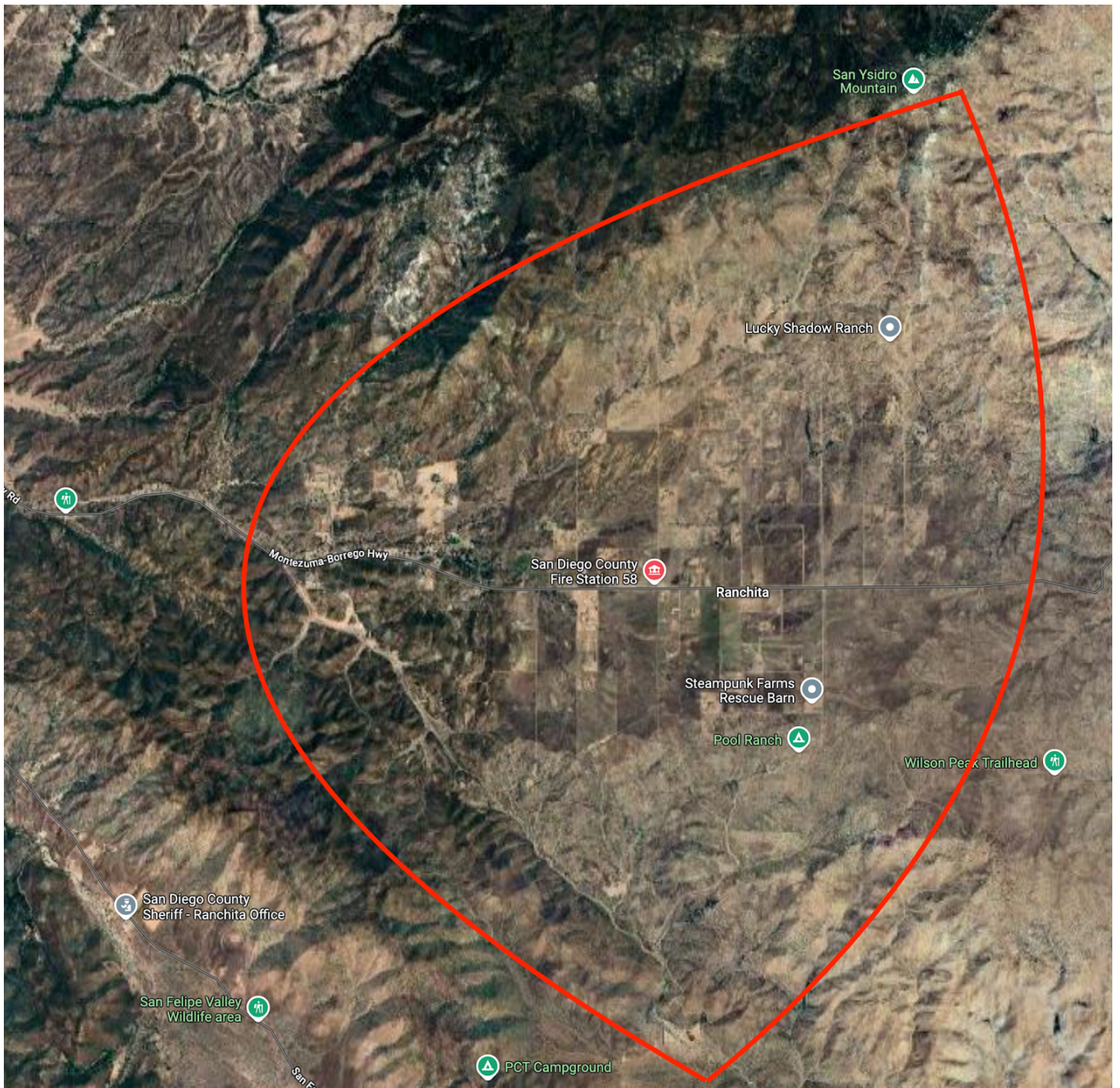
### **Illustration** (illustration 1)

An accompanying illustration is maintained to depict the approximate precinct boundaries, which include non-linear arcs connecting the defined points.

## **Boundary Adjustments**

Should lawful development occur outside the precinct boundaries over time, the MVVCSO Board shall utilize relevant policies and procedures, in compliance with applicable laws, to redefine and incorporate these developments within the precinct as appropriate.

(illustration 1)

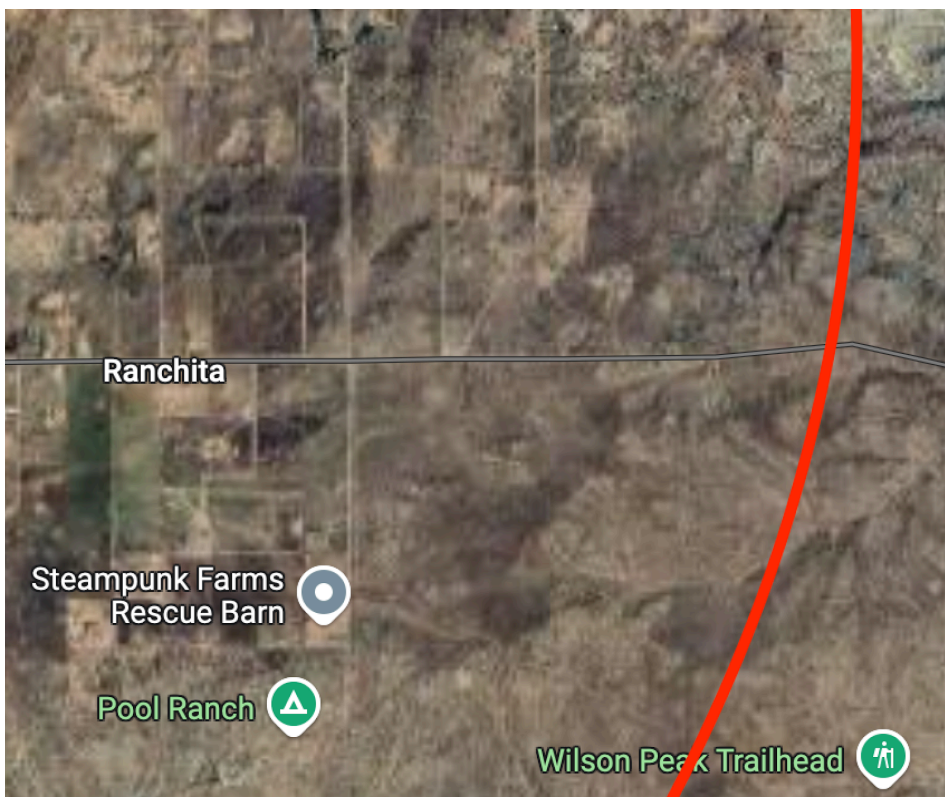




(illustration 2)

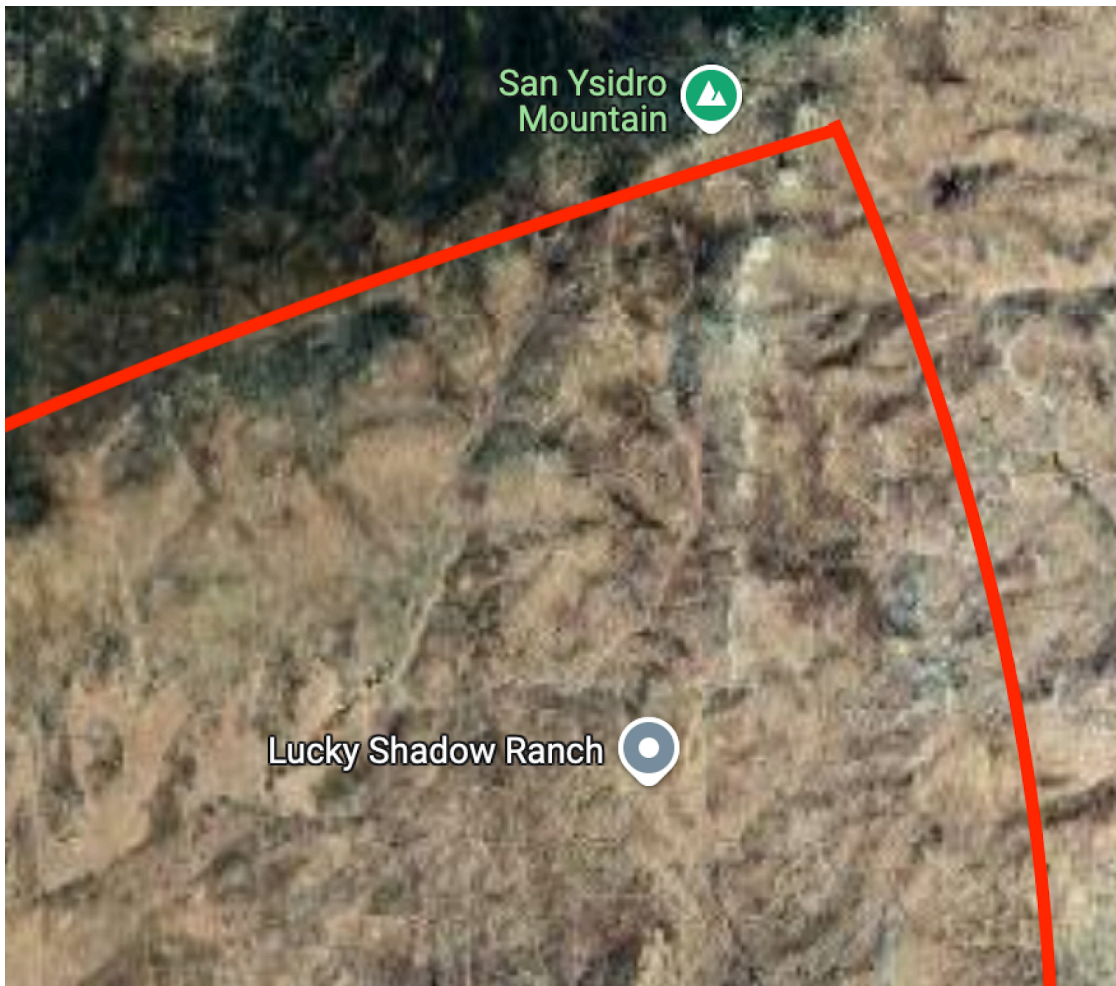


(illustration 3)





(illustration 4)



(illustration 5)

