

Baby Crackers

In A shoe box with a heating pad under half of the box.

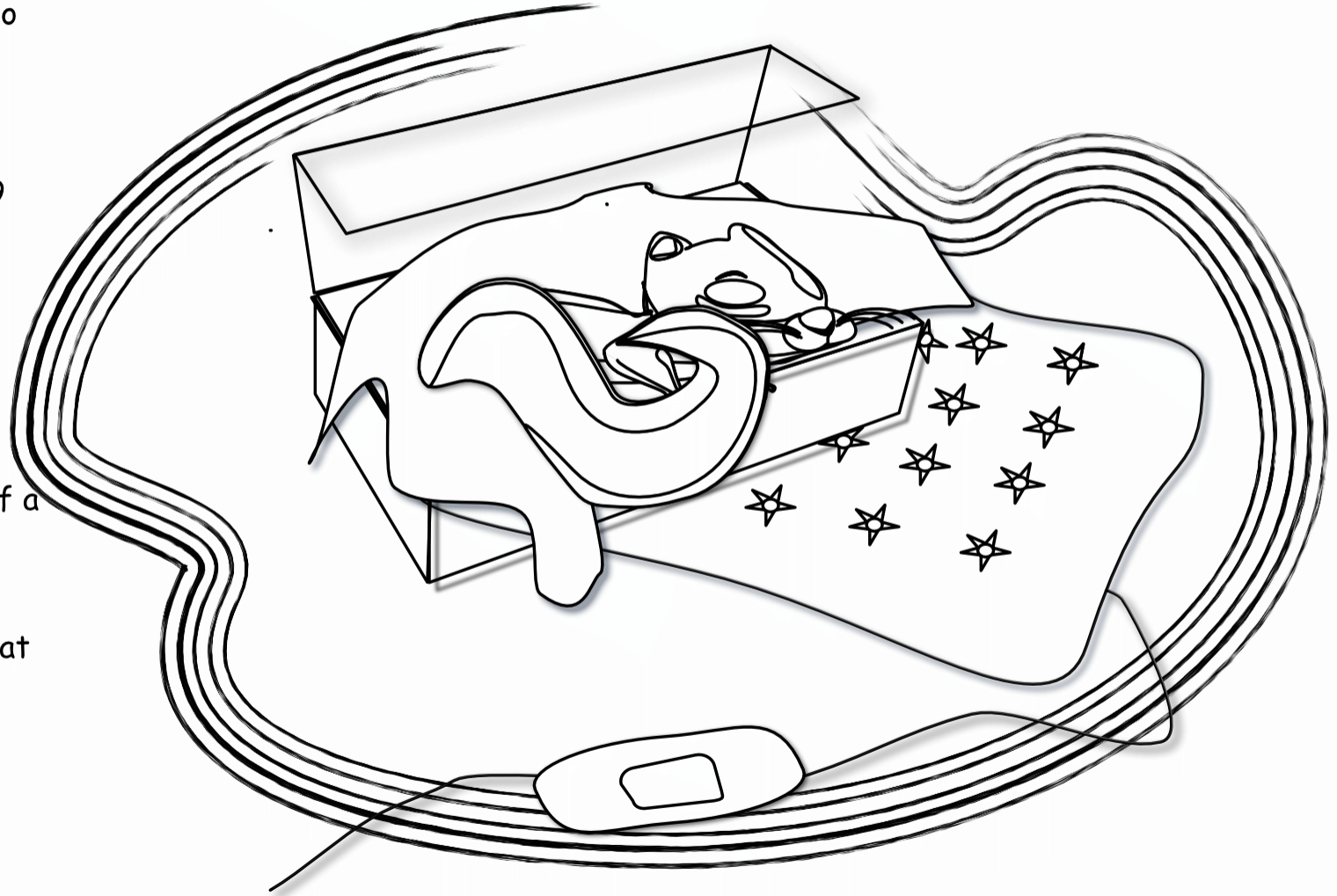
Do you remember Why?

Baby squirrels don't generate their own heat so you must do that for them. In the wild a squirrel will cuddle with siblings (brother and sisters).

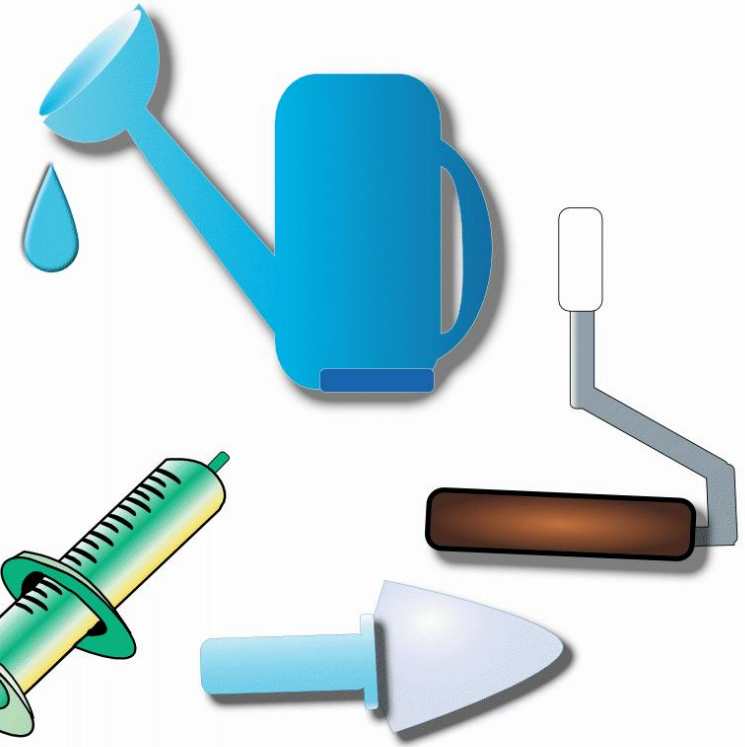
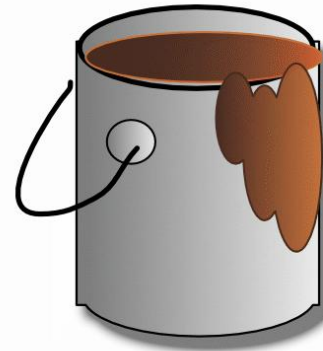
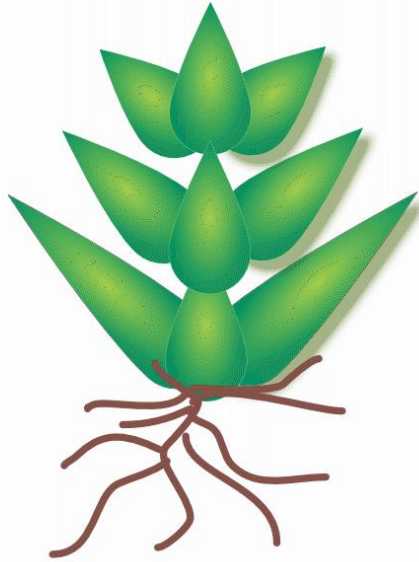
Baby squirrels should be incubated at about 99 °F (37 °C). It is important to create the right environment for your baby squirrel's good health.

Crackers heating pad was placed on one side. This way if he gets too hot he can simply crawl away from the pad. The heating pad was under the container, not inside with the baby to protect him from getting exposed to too hot of a temperature.

Other barn yard animals need extra heat if parents are not around. Baby chicks need a heat lamp. Baby humans may be put in a incubator.



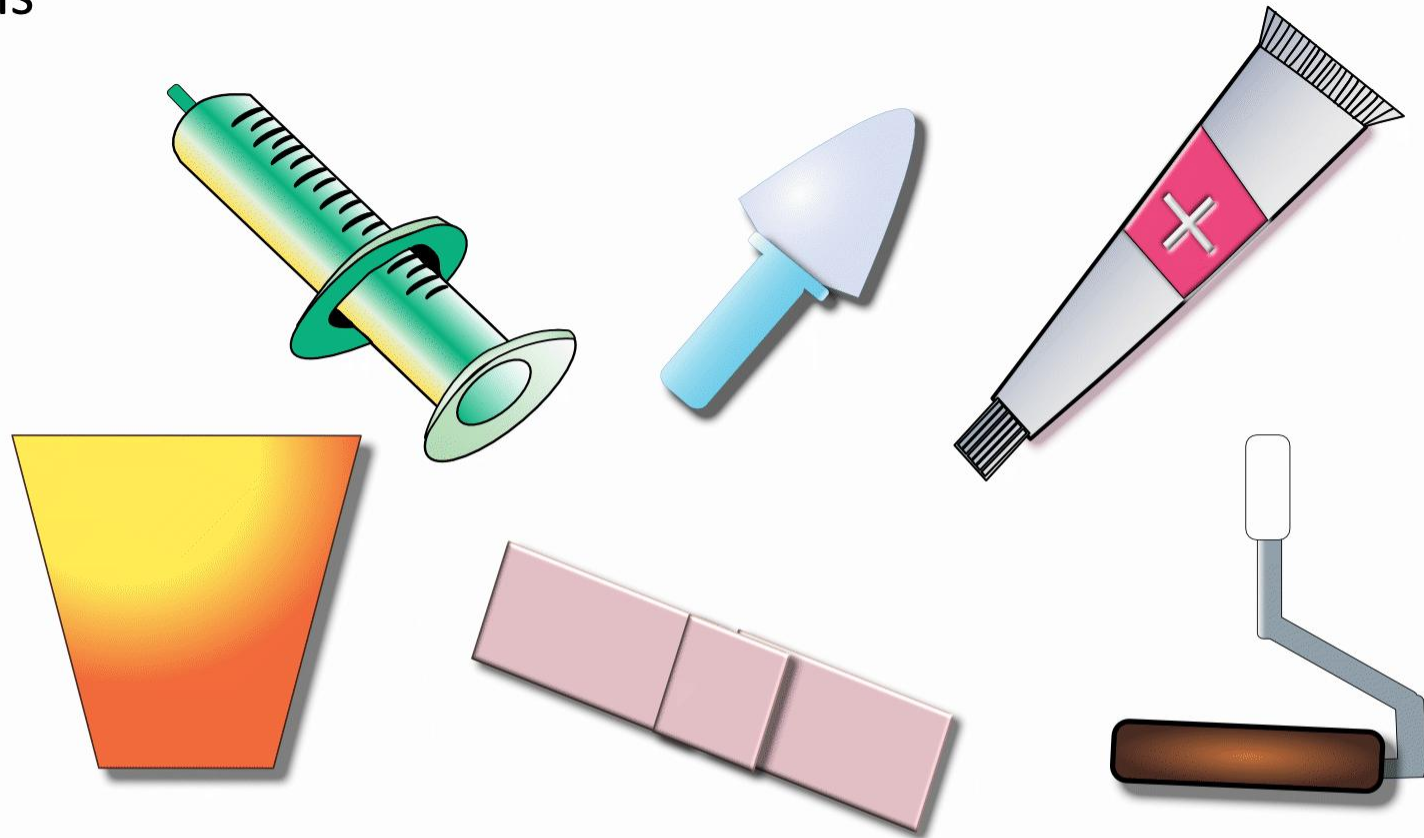
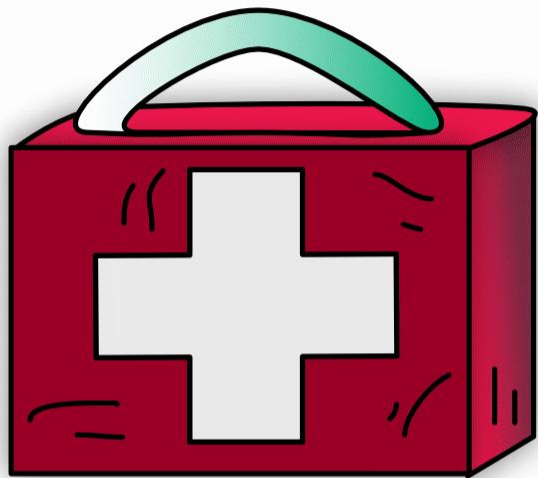
Draw a line from the plant to items that are used in **Gardening or helping growing a plant:**



Can you think and list other things?



Draw a line from the medicine kit to items that are used in **Medical Treatment**:



Can you think and list other things?

