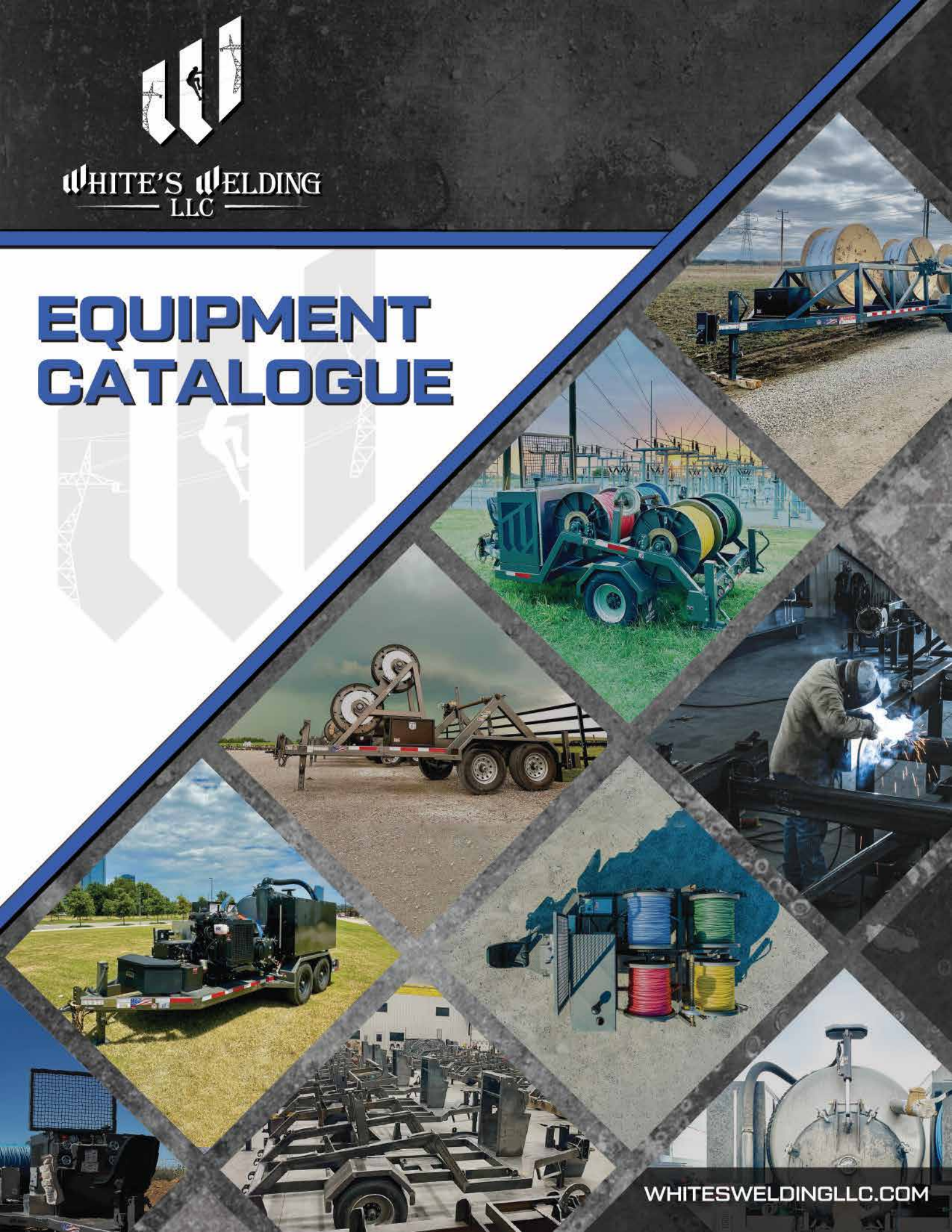




WHITE'S WELDING
LLC

EQUIPMENT CATALOGUE



WHITESWELDINGLLC.COM



OUR MISSION

White's Welding, LLC is a premier welding and fabrication company with over two decades of experience designing and building sophisticated equipment for a variety of different industries. With a focus on the energy sector, **White's Welding** has 3 main divisions:

- Electrical Utility Trailer Manufacturing
- Oilfield Equipment Manufacturing
- Diversified Service and Repair

White's Welding has a long and established history, serving many areas including the Energy Sector, US Armed Forces, Manufacturing and Agricultural Industries.

Founded in 2000, **White's Welding** and our partners have built a solid and dependable reputation among our customers. We employ high quality, experienced welders from a variety of industry related backgrounds to ensure the highest quality craftsmanship on all our products. In-house engineering supports any research, development and design requirements our customers may have.

Our goal is to provide the highest quality products and services to our customers, while keeping safety and integrity at the forefront of our business.

WHITE'S WELDING
LLC





Model 2K4DP

2K 4 DRUM OVERHEAD PULLER



DIMENSIONS AND WEIGHTS

Length: 15' 5" **Width:** 94" OAW
Height: 8' 11" **G.V.W.R.:** 11,400 lbs.
Empty Weight: 6000 lbs.
Payload: Approximately 5,400 lbs.

UNIT PERFORMANCE

Continuous Torque Rating: 36,000 in. lbs
Line Speed: 4 mph average
Actual Full Drum Pull Rating: 2,000 lbs

PULLING REEL SPECIFICATIONS

Quantity: Four
Reel Diameter: 36" OD
Reel Inside Width: 30 1/4"
Core Diameter: 10 3/4"
Approximate Line Capacity:
9000 ft. of 1/2" synthetic rope
Reel Brakes:
Hydraulic actuated caliper from
operator station with 16" diameter Disc
Reel Engagement: Mechanical clutch
engage with lockout function

STANDARD FEATURES

Engine: 49 hp water cooled diesel
Levelwind: Automatic lead screw
Running Gear: One 10,000 lb. single wheel
axle with oil bath hubs
Brakes: 12 1/4" x 5" electric with
self-charging break-away system
Landing Gear: 12,000 lb. static drop leg jack
Rear Jacks: Spring loaded retraction,
manual pin type
Wheels: 16" 8-hole Steel
Tires: 235/80R 16" 14-Ply
Frame: 5x3 rectangular tubing
Lights: Sealed beam with waterproof
wiring in nylon tubing
Controls: Electric over hydraulic joystick for
payout and take up. HP limiting function to
allow operator maintainable line speed from
full drum to empty drum
Pressure Control:
Hydraulic pressure control valve
Hydraulics: Closed loop hydrostatic hydraulic
drive. Integrated 4.4 gal hydraulic tank and
cooler. Hydraulic gearbox with sprocket chain
driven drums. Emergency shut down feature
for operator safety





Model 4K4DP

4K 4 DRUM OVERHEAD PULLER

DIMENSIONS AND WEIGHTS

Length: 21' **Width:** 101" OAW
Height: 9' 3" **G.V.W.R.:** 23,000 lbs.
Empty Weight: 15,500 lbs.
Payload: Approximately 7,500 lbs.

UNIT PERFORMANCE

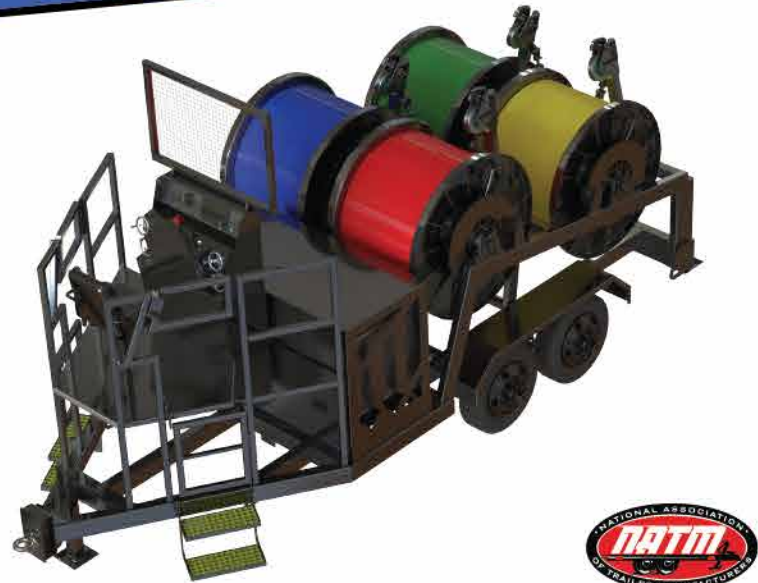
Continuous Torque Rating: 108,000 in. lbs
Line Speed: 4 mph average
Actual Full Drum Pull Rating: 4,000 lbs

PULLING REEL SPECIFICATIONS

Quantity: Four **Reel Diameter:** 54" OD
Reel Inside Width: 31 1/2"
Core Diameter: 10 3/4"
Line Capacity:
15,000 ft. of 5/8" synthetic rope
Reel Brakes: Hydraulic actuated caliper from operator station with 30" diameter Disc
Reel Engagement: Mechanical clutch engage with lockout function

STANDARD FEATURES

Engine: 74 hp water cooled diesel
Levelwind: Four independent electric over hydraulic levelwind arms that can be manually operated or auto adjusting



Running Gear: Two 10,000 lb. single wheel axle with oil bath hubs
Brakes: 12 1/4" x 3-3/8" electric with self-charging break-away system
Landing Gear/Outriggers: Three independent electric over hydraulic 10,000 lb. hydraulic jacks that can be manually operated with built in function of an automatic leveling
Wheels: 17" Steel Disc
Tires: 235/75R 17.5" 18-Ply
Frame: 6x4 frame with 6x3 reel supports
Lights: Sealed beam with waterproof wiring in nylon tubing
Controls: Electric over hydraulic joystick for payout and take up. HP limiting function to allow operator maintainable line speed from full drum to empty drum. 11" touch screen for operating and monitoring. Manual and automatic levelwind joystick paddles. Custom keypads for hydraulic jack and engine operations on console and at lower level for convenient access.
Pressure Control: Hydraulic pressure control valve
Hydraulics: Closed loop hydrostatic hydraulic drive. Integrated 4.4 gal hydraulic tank and cooler. Hydraulic gearbox with sprocket chain driven drums. Emergency shut down feature for operator safety.





Model 36BWT

36" BULL WHEEL TENSIONER



DIMENSIONS AND WEIGHTS

Length: 16' **Width:** 90" OAW
Height: 8' 11" **G.V.W.R.:** 18,250 lbs.
Empty Weight: 3800 lbs.
Payload: Approximately 14,450 lbs.

STANDARD FEATURES

Running Gear: Two 8,000 lb. single wheel axle with oil bath hubs
Brakes: 12 1/4" x 5" electric with self-charging break-away system
Landing Gear: 12,000 lb. static drop leg jack
Rear Jacks: Manual pin type
Wheels: 16" 8-hole Steel
Tires: 235/80R 16" 14-Ply

UNIT PERFORMANCE

Continuous Rated Tension: 3,000 lbs
Line Speed: 0-4 mph

REEL CAPACITY

Maximum Reel Diameter: 72"
Maximum Reel Width: 55"
Maximum Reel Weight: 10,000 lbs
Shaft Diameter: 2-7/16"
Shaft Loading: Quick change reel shaft with accompanying hooks
Reel Brake: Manual hand crank caliper with 16" diameter bronze rotor

BULLWHEEL SYSTEM

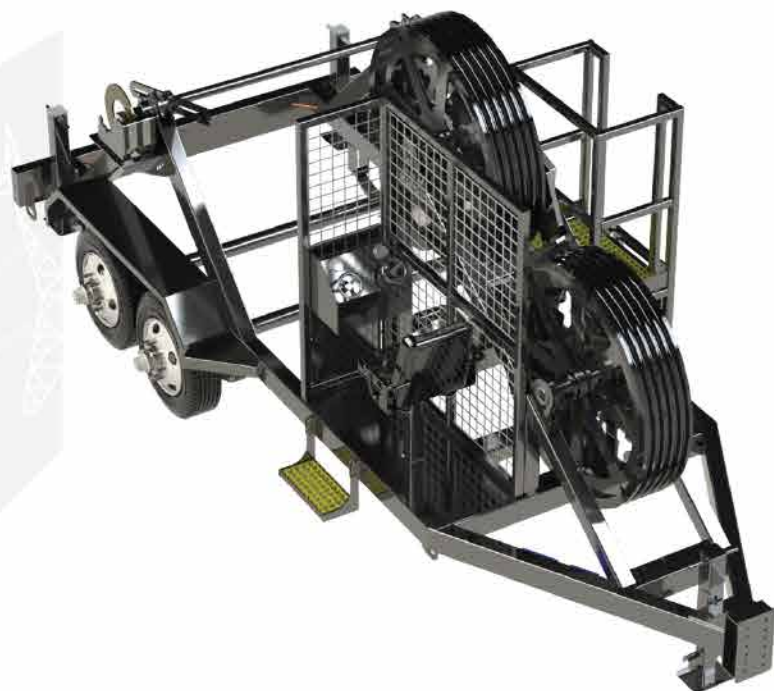
Reel Diameter: 36" OD
Reel Width: 8"
Conductor Grooves: 4 at 1.25"
Bullwheel Brakes: Hydraulic actuated calipers from operator station with 24" diameter stainless steel rotors
Conductor Guide: 4 roller fairlead to insure proper alignment
Toolbox: 18"x18"x30"





Model 52BWT

52" BULL WHEEL TENSIONER



DIMENSIONS AND WEIGHTS

Length: 20' 5" **Width:** 100" OAW
Height: 9' 9" **G.V.W.R.:** 20,500 lbs.
Empty Weight: 7100 lbs.
Payload: Approximately 13,400 lbs.

STANDARD FEATURES

Running Gear: Two 10,000 lb. single wheel axle with oil bath hubs
Brakes: 12 1/4" x 3-3/8" electric with self-charging break-away system
Landing Gear & Rear Jacks: 12,000 lb. static drop leg jack
Wheels: 17.5" Disc Steel Wheel
Tires: 235/75R 17.5" 18-Ply
Frame: 6x4 rectangular tubing
Lights: Sealed beam with waterproof wiring in nylon tubing
Toolbox: 18"x18"x30"

UNIT PERFORMANCE

Continuous Rated Tension: 5,000 lbs
Line Speed: 0-4 mph

REEL CAPACITY

Maximum Reel Diameter: 96"
Maximum Reel Width: 60"
Maximum Reel Weight: 12,000 lbs
Shaft Diameter: 2 5/8"
Shaft Loading: Quick change reel shaft with accompanying hooks
Reel Brake: Hydraulic actuated calipers from operator station with 16" diameter bronze rotor

BULLWHEEL SYSTEM

Wheel Diameter: 52" OD **Wheel Width:** 12"
Conductor Grooves: 5 at 1-1/2" diameter
Bullwheel Brakes: Hydraulic actuated calipers from operator station with 36" diameter A588 rotors
Conductor Guide: 5 roller fairlead to insure proper alignment with quick flip latch to allow operator to run left or right hand lay cable





Model 4RTBT

4 REEL TRAILER/BRAKE TENSIONER



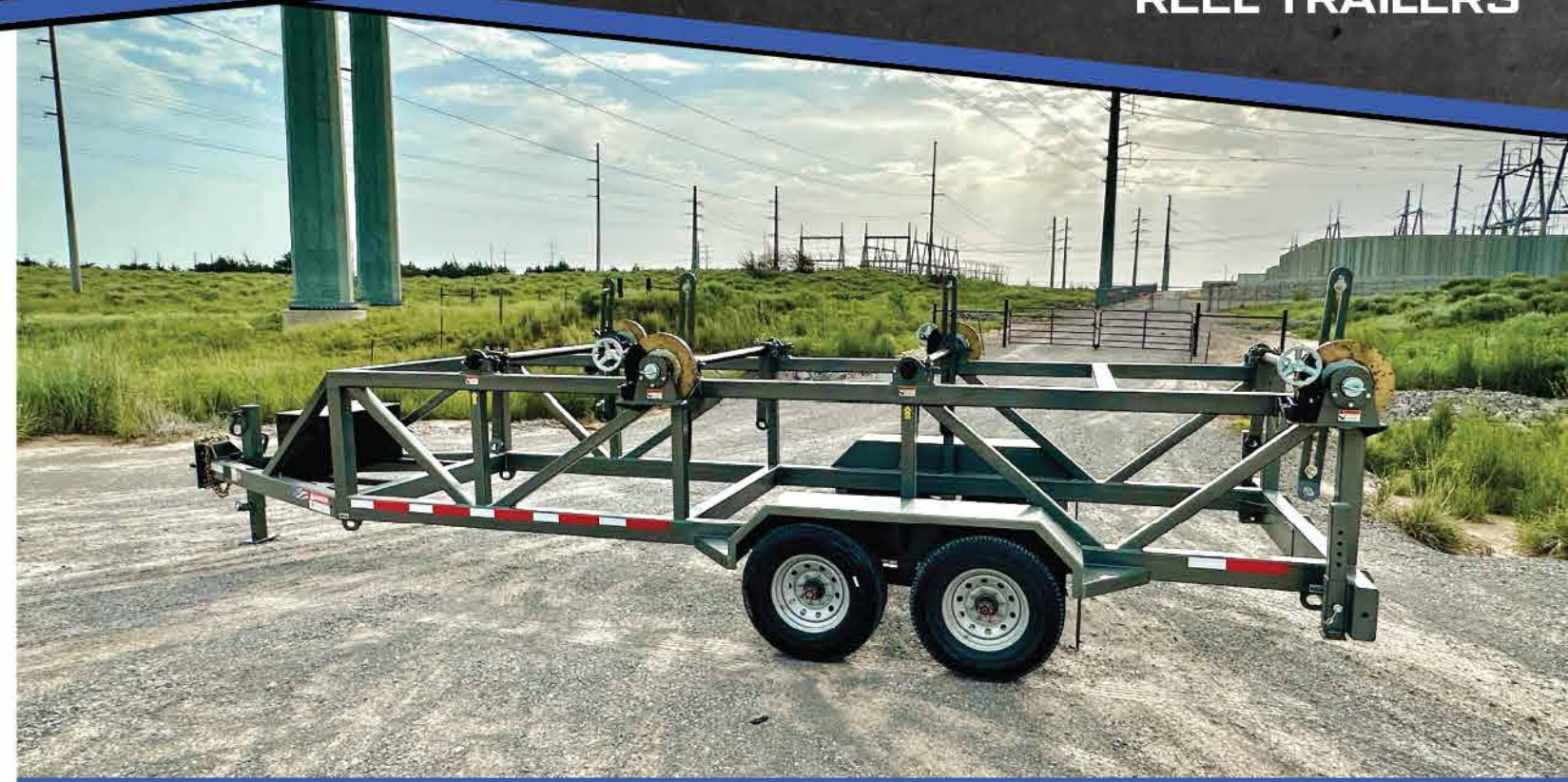
SPECIFICATIONS

Length: 27'
Width: 99" OAW
Height: 7' 2"
Running Gear: Two 8,000 lb. single wheel axle with oil bath hubs
Brakes: 12 1/4" x 5" electric with self-charging break-away system
Landing Gear: 12,000 lb. static drop leg jack
Rear Jacks: Manual pin type
Wheels: 16" 8-hole Steel
Tires: 235/80R 16" 14-Ply
Frame: 6x4x3/16 with 4x4x3/16 posts and 3x3x3/16 diagonal rectangular tubing
Coupling System: 42,000 lb capacity x 2 1/2" pintle eye, adjustable in 2 1/4" increments

Lights: Sealed beam with waterproof wiring in nylon tubing
G.V.W.R.: 18,240 lbs.
Empty Weight: 5000 lbs.
Payload: Approximately 13,240 lbs.

CAPACITY

Quantity: Four
Max. Reel Diameter: 48"
Max. Reel Width: 58"
Max. Reel Weight: 3,300 lbs. (each)
Quantity: Three
Max. Reel Diameter: 72"
Max. Reel Width: 58"
Max. Reel Weight: 4,400 lbs. (each)
Spindle Diameter: 2 7/16" w/ locking collars
Reel Brakes: Manually actuated caliper 16" diameter Disc
Reel Loading: Quick change type without adjusting reel brake assembly





Model 2RTBT

2 REEL TRAILER/BRAKE TENSIONER



SPECIFICATIONS

Length: 25' 7"
Width: 100" OAW
Height: 7' 3"
G.V.W.R.: 18,250 lbs.
Empty Weight: 4700 lbs.
Payload: Approximately 13,550 lbs.
Running Gear: Two 8,000 lb. single wheel axle with oil bath hubs
Brakes: 12 1/4" x 3-3/8" electric with self-charging break-away system
Landing Gear & Rear Jacks: 12,000 lb. static drop leg jack
Wheels: 16" 8-hole Steel
Tires: 235/75R 16" 14-Ply
Frame: 6x4 with 6x4 diagonals

Coupling System: 42,000 lb capacity x 2 1/2" pintle eye, adjustable in 2 1/4" increments
Lights: Sealed beam with waterproof wiring in nylon tubing

CAPACITY

Quantity: Two
Max. Reel Diameter: 120"
Max. Reel Width: 60"
Max. Reel Weight: 6,500 lbs. (each)
Spindle Diameter: 2 5/8" with locking collars
Reel Brakes: Manually actuated caliper 16" diameter Disc
Reel Loading: Quick change type without adjusting reel brake assembly

OPTIONS

- Hydraulic Overspin Breaks
- Custom Paint Color





Model 8KSLSR

8K SINGLE REEL TRAILER



DIMENSIONS AND WEIGHTS

Length: 10' 6" **Width:** 99.5" OAW
Height: 5' 6" **G.V.W.R.:** 9,100 lbs.
Empty Weight: 1550 lbs.
Payload: Approximately 7,500 lbs.

STANDARD FEATURES

Running Gear: Two 4,000 lb. single wheel axle with oil bath hubs
Brakes: 12 1/4" x 3-3/8" electric with self-charging break-away system
Landing Gear: 12,000 lb. static drop leg jack
Rear Jacks: Manual pin type
Wheels: 16" 8-hole Steel
Tires: 235/80R 16" 14-Ply
Frame: 6x4 rectangular tubing
Lights: Sealed beam with waterproof wiring in nylon tubing
Toolbox: 18"x18"x30"

UNIT PERFORMANCE

Continuous Rated Tension: 3,000 lbs
Line Speed: 0-4 mph

REEL CAPACITY

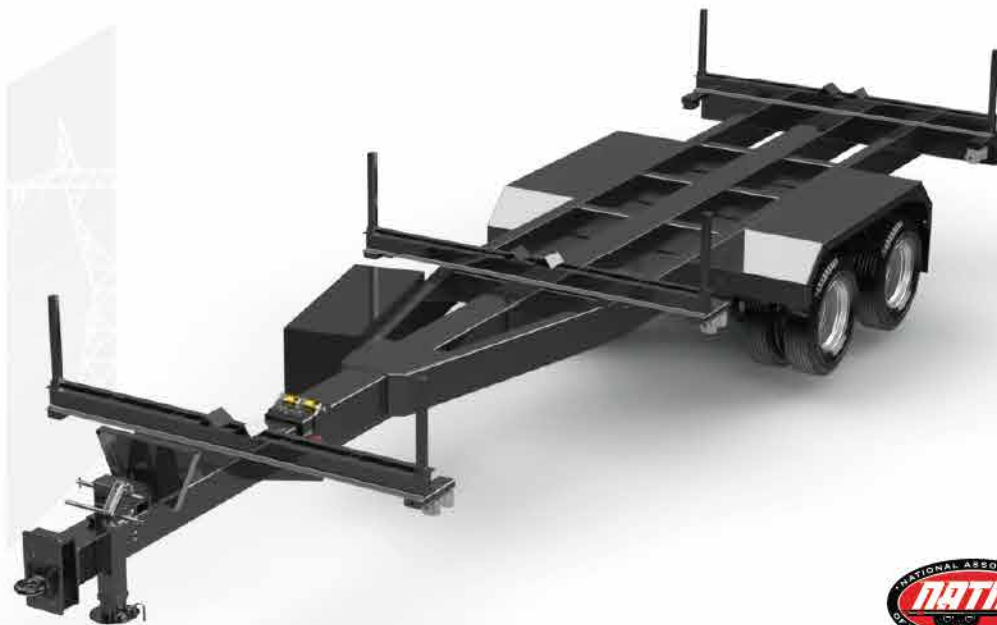
Maximum Reel Diameter: 120"
Maximum Reel Width: 64"
Maximum Reel Weight: 7,500 lbs
Shaft Diameter:
2 7/8" w/ pinned reel shaft latches
Reel Loading:
5 position hydraulic lift reel carrier
Hydraulics:
Two independent 2" x 20" stroke hydraulic cylinders each controlled by its own manual double acting hydraulic hand pump. A 3.25-gallon hydraulic tank





Model PT24K

24K POLE TRAILER

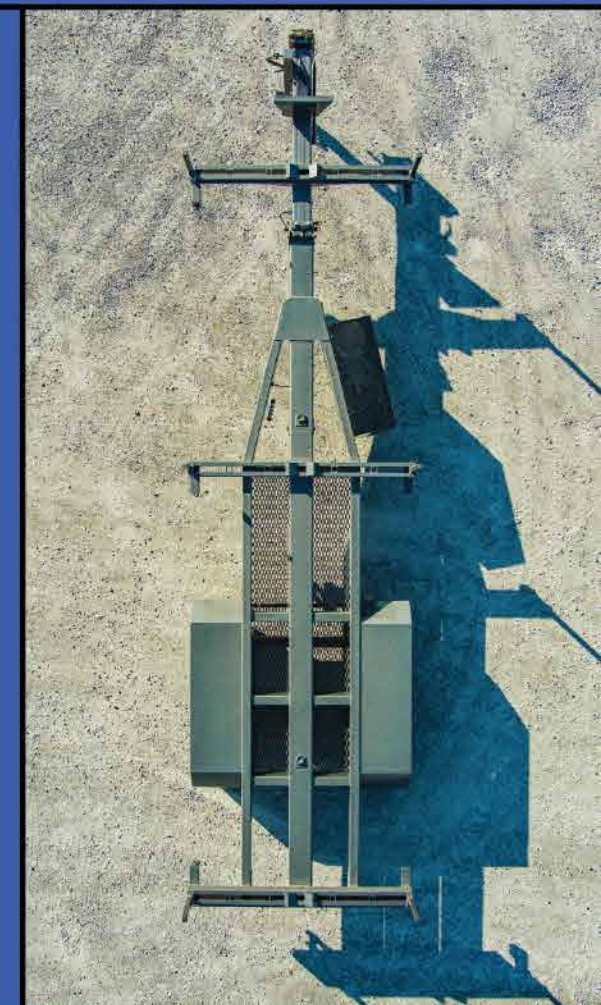


SPECIFICATIONS

Length	Extendable length from 31' to 47' (7 pinpoints with 6 equal intervals @ 32" apart)
Width	8' OAW, with 95" Bolsters OAW (90.5" useable width)
Running Gear	Two 12,000 lb. dual wheel axle with oil bath hubs
Brakes	12 1/4" x 5" electric with self-charging break-away system
Landing Gear	12,000 lb. static drop leg jack
Wheels	16" 8-hole Steel
Tires	235/80R 16" 14-Ply
Tongue	8" x 1/4" and 10 x 1/4" square tube; telescopes on rollers and UHMW
Frame	10" x 4" x 3/16" & 8" x 4" x 3/16" Rectangular Tubing
Coupling System	42,000 lb capacity x 2 1/2" pintle eye, adjustable in 2 1/4" increments
Lights	Sealed beam with waterproof wiring in nylon tubing
G.V.W.R.	26,000 lbs.
Empty Weight	6500 lbs.
Payload	Approximately 19,500 lbs.
Misc.	Tie down straps, wheel chocks, safety chains, slide intube stanchions with keeper pins

OPTIONS

15,000 lb. axle / Additional length / Electric over hydraulic disc or drum brakes
Extended storage area / Custom paint color / Additional Toolbox / Sliding Stanchions





Model PT15K

15K POLE TRAILER

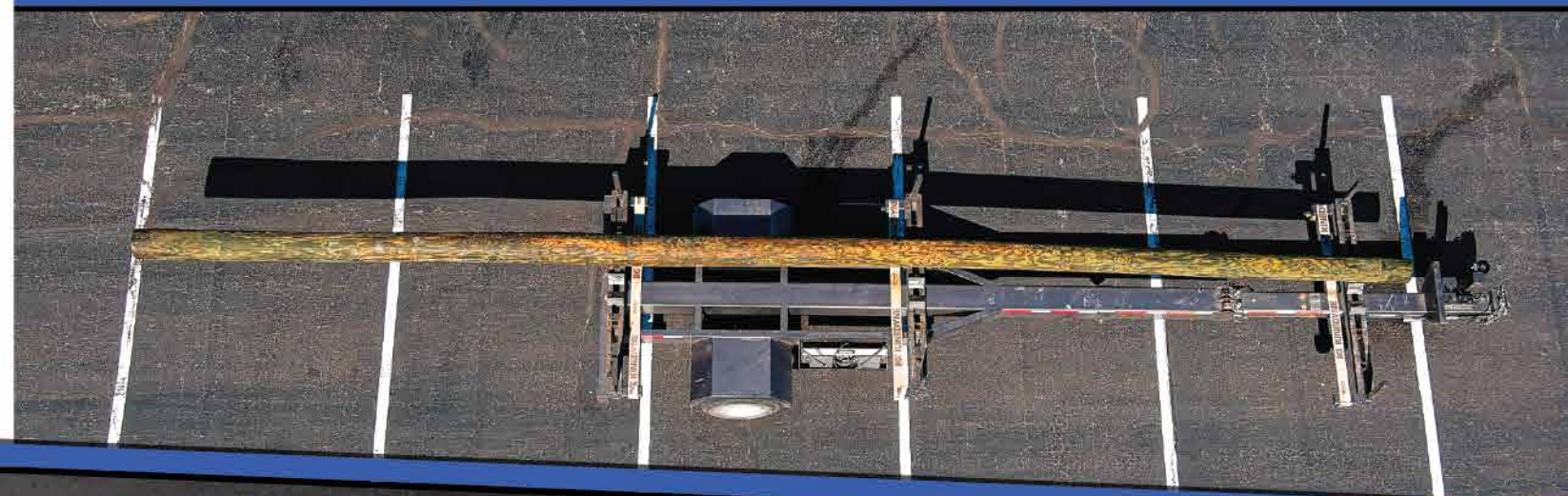


SPECIFICATIONS

Length	Extendable length from 26.5' to 41.5' (7 pinpoints with 6 equal intervals @ 30" apart)
Width	82" OAW, with 81" Bolsters OAW (77.5" useable width)
Running Gear	One 15,000 lb. dual wheel axle with oil bath hubs
Brakes	12 1/4" x 5" electric with self-charging break-away system
Landing Gear	12,000 lb. static drop leg jack
Wheels	16" 8-hole Steel
Tires	235/80R 16" 14-Ply
Tongue	8" x 1/4" and 10 x 1/4" square tube; telescopes on rollers and UHMW
Frame	10" x 4" x 3/16" Rectangular Tubing & C 10 x 20 C-Channel
Coupling System	42,000 lb capacity x 2 1/2" pintle eye, adjustable in 2 1/4" increments
Lights	Sealed beam with waterproof wiring in nylon tubing
G.V.W.R.	17,000 lbs.
Empty Weight	4200 lbs.
Payload	Approximately 12,800 lbs.
Misc.	Tie down straps, wheel chocks, safety chains, slide intube stanchions with keeper pins

OPTIONS

Additional length / Electric over hydraulic disc or drum brakes / Extended storage area
Custom paint color / Toolbox / Sliding Stanchions





Model 14KUPT

14K UTILITY POLE TRAILER



SPECIFICATIONS

Length	Extendable length from 20' to 30' (3 pinpoints with 2 equal intervals @ 60" apart)
Width	88" OAW, with 88" Bolsters OAW (84.5" useable width)
Running Gear	Two 7,000 lb. single wheel tandem Torflex axles with oil bath hubs
Brakes	12" x 2" electric with self-charging break-away system
Landing Gear	12,000 lb. static drop leg jack
Wheels	16" 8-hole Steel
Tires	235/80R 16" 14-Ply
Tongue	6 x 4 x 1/4 and 8 x 6 x 3/16 rect. tube; telescopes on rollers and UHMW
Frame	6 x 2 x 1/4 rectangle tube with 3" channel supports in bed
Utility Bed	9' Long x 64" Wide x 15" High with reinforced fold down tailgate
Coupling System	42,000 lb capacity x 2 1/2" pintle eye, adjustable in 2 1/4" increments
Lights	Sealed beam with waterproof wiring in nylon tubing
G.V.W.R.	16,100 lbs.
Empty Weight	4000 lbs.
Payload	Approximately 12,100 lbs.
Misc.	Tie down straps, wheel chocks, safety chains, slide in tube stanchions with keeper pins

OPTIONS

10K HD Axles / Air Brakes / Additional storage boxes / Rear and side steps with removable safety handles / Reel stands / Swing away jack / Additional length / Custom paint color





Model 16KUPT

16K UTILITY POLE TRAILER



SPECIFICATIONS

Length	Extendable length from 25' 10" to 41' (7 pinpoints with 6 equal intervals @ 30" apart)
Width	88" OAW, with 88" Bolsters OAW (84.5" useable width)
Running Gear	Two 8,000 lb. single wheel axles with oil bath hubs
Brakes	12 1/4" x 5" electric with self-charging break-away system
Landing Gear	12,000 lb. static drop leg jack
Wheels	16" 8-hole Steel
Tires	235/80R 16" 14-Ply
Tongue	7 x 4 x 1/4 and 8 x 6 x 3/16 rect. tube; telescopes on rollers and UHMW
Frame	6 x 3 x 1/4 rectangle tube
Coupling System	42,000 lb capacity x 2 1/2" pintle eye, adjustable in 2 1/4" increments
Lights	Sealed beam with waterproof wiring in nylon tubing
G.V.W.R.	18,000 lbs.
Empty Weight	4800 lbs.
Payload	Approximately 13,200 lbs.
Misc.	Tie down straps, wheel chocks, safety chains, slide in tube stanchions with keeper pins

OPTIONS

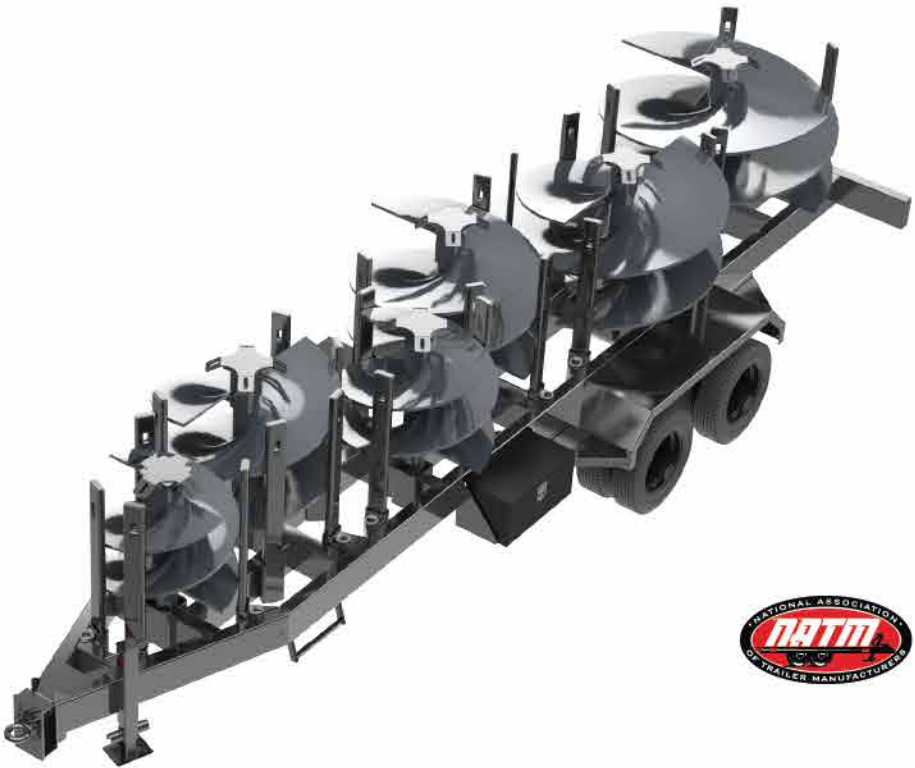
10K HD Axles / Air Brakes / Additional storage boxes / Rear and side steps with removable safety handles / Reel stands / Swing away jack / Additional length / Custom paint color





Model
6AT

CUSTOM
AUGER TRAILER



SPECIFICATIONS

Length	30'
Width	95"
Running Gear	Two 12,000 lb. dual wheel axle with oil bath hubs
Brakes	12 1/4" x 3-3/8" electric with self-charging break-away system
Landing Gear	12,000 lb. static drop leg jack
Wheels	16" 8-hole Steel
Tires	235/80R 16" 14-Ply
Frame	10" x 4" x 1/4" A500 Rectangular Tubing
Coupling System	42,000 lb capacity x 2 1/2" pintle eye, adjustable in 2 1/4" increments
Lights	Sealed beam with waterproof wiring in nylon tubing
G.V.W.R.	24,000 lbs.
Empty Weight	7500 lbs.
Payload	Approximately 16,500 lbs.
Misc.	Can safely secure both core bit as well as conventional augers, tie down chains, boomer ratchet binders, wheel chocks, safety chains, slide in tube stanchions, Kelly staub tie downs, toolboxes

OPTIONS

Options - 15,000 lb. axle / Additional length / Electric over hydraulic disc or drum brakes
Custom paint color / Additional auger storage / Custom layouts

Terex Utilities is the exclusive distributor of White's Welding Auger Trailers





Model 6AT24KH

24K HYBRID AUGER TRAILER



SPECIFICATIONS

Length	30'
Width	95"
Running Gear	Two 12,000 lb. dual wheel axle with oil bath hubs
Brakes	12 ¼" x 5" electric with self-charging break-away system
Landing Gear	12,000 lb. static drop leg jack
Wheels	16" 8-hole Steel
Tires	235/80R 16" 14-Ply
Frame	10" x 4" x 1/4" A500 rectangular tubing
Coupling System	42,000 lb capacity x 2 ½" pintle eye, adjustable in 2 ¼" increments
Lights	Sealed beam with waterproof wiring in nylon tubing
G.V.W.R.	27,500 lbs.
Empty Weight	7500 lbs.
Payload	Approximately 20,000 lbs.
Configuration	Model built as shown will hold a: 36", 48", 42", 54", 60" & 72". However, it can be built to custom configurations to fit your needs
Misc.	Can safely secure both core bits as well as conventional augers, tie down chains, boomer ratchet binders, wheel chocks, safety chains, slide in tube stanchions, Kelly staub tie downs, toolboxes

OPTIONS

15,000 lb. Axle / Additional length / Electric over hydraulic disc or drum brakes / Custom paint color
Additional auger storage / Custom layouts

Terex Utilities is the exclusive distributor of White's Welding Auger Trailers





Model CV500

COMMAND VAC VACUUM EXCAVATOR



DIMENSIONS AND WEIGHTS

Length: 21' 6" **Width:** 98.5"
Height: 7' 6" **G.V.W.R.:** 18,400 lbs.
Empty Weight: 7,700 lbs.
Payload: Approximately 10,700 lbs.

UNIT PERFORMANCE

High Pressure Wash Pump:

Flow Rate: 4 GPM
Pressure: 4000 PSI Adjustable

Vacuum:

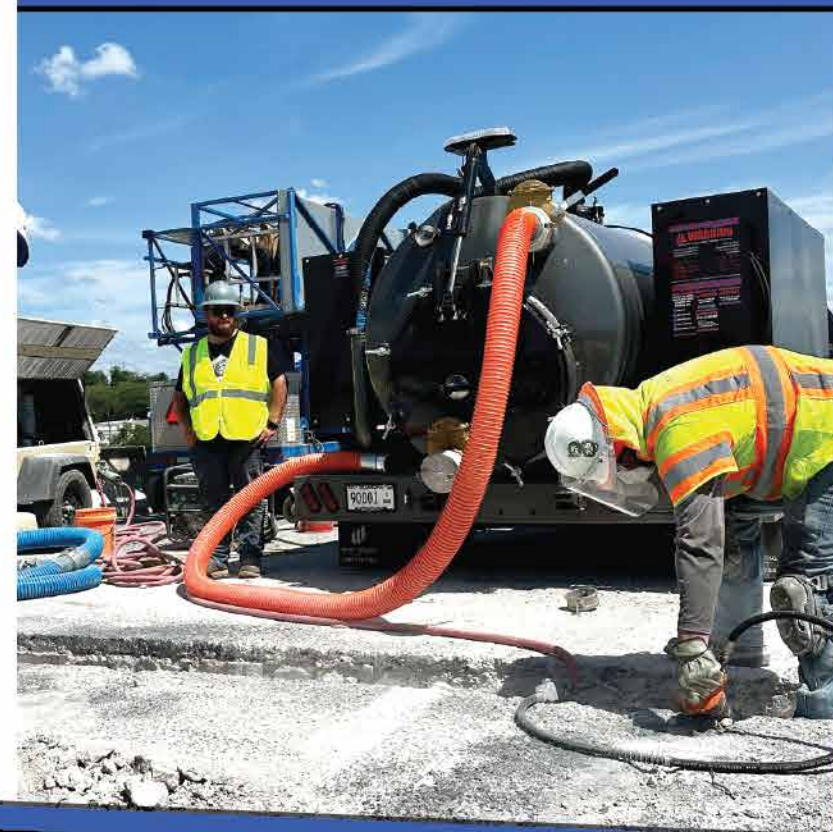
Filters: .5 micron **Hose Length:** 20'
Hose Diameter: 3" **Flow Rate:** 431 CFM
Blower Type: Tri-Lobe **Pressure:** 24 inHg

OPTIONS

- 800 Or 500 Gal Spoil Tank • Hot Water Heater
- Custom Paint Color • Manual Boom
- Hydraulic Boom • Jet Wash Downs In Fenders
- Valve Exerciser • Internal Wash Out System

STANDARD FEATURES

Engine: 36.9 hp water cooled diesel
Fuel Tank Capacity: 22 gal
Running Gear: Two 8,000 lb. single wheel axle with oil bath hubs 4" drop
Brakes: 12 1/4" x 3-3/8" electric with self-charging break-away system
Landing Gear: 12,000 lb. static drop leg jack
Wheels: 16" 8-hole Steel
Tires: 235/75R 16" 14-Ply
Lights: Sealed beam with waterproof wiring in nylon tubing
Water Tanks: 400 gallon total
Number of Tanks: 2
Tank Lift: Hydraulic scissor lift for full dump at 50° tilt
Spoil Tank: 650 gallons
Door Type: Hydraulic with 8 manual wing nuts
Wash: Internal wash out system
Thickness: 1/4" allowing for 15 PSI to pressure off and full vacuum
Control Panel: Curbside **Gauges:** Analog





Model CV1000

COMMAND VAC VACUUM EXCAVATOR



DIMENSIONS AND WEIGHTS

Length: 21' 6" **Width:** 98.5"
Height: 7' 6" **G.V.W.R.:** 18,400 lbs.
Empty Weight: 8,500 lbs.
Payload: Approximately 9,900 lbs.

UNIT PERFORMANCE

High Pressure Wash Pump:

Flow Rate: 4 GPM
Pressure: 4000 PSI Adjustable

Vacuum:

Filters: .5 micron **Hose Length:** 20'
Hose Diameter: 4" **Flow Rate:** 1000 CFM
Blower Type: Tri-Lobe **Pressure:** 27 inHg

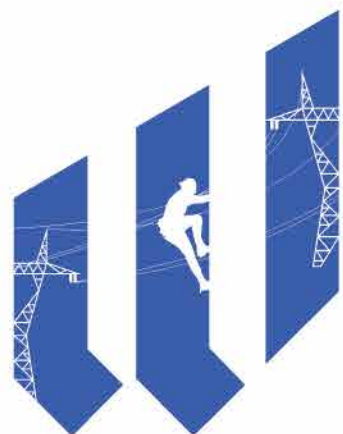
OPTIONS

- 800 Or 500 Gal Spoil Tank • Hot Water Heater
- Semi-Soft Custom Paint Color • Manual Boom
- Jet Wash Downs • Valve Exerciser
- Internal Wash Out System

STANDARD FEATURES

Engine: 70 hp water cooled diesel
Fuel Tank Capacity: 22 gal
Running Gear: Two 8,000 lb. single wheel axle with oil bath hubs 4" drop
Brakes: 12 1/4" x 3-3/8" electric with self-charging break-away system
Landing Gear: 12,000 lb. static drop leg jack
Wheels: 16" 8-hole Steel
Tires: 235/80R 16" 14-Ply
Lights: Sealed beam with waterproof wiring in nylon tubing
Water Tanks: 400 gallon total
Number of Tanks: 2
Tank Lift: Hydraulic scissor lift for full dump at 50° tilt
Spoil Tank: 650 gallons
Door Type: Hydraulic with 8 manual wing nuts
Wash: Internal wash out system
Thickness: 1/4" allowing for 15 PSI to pressure off and full vacuum
Control Panel: Curbside **Gauges:** Analog





WHITE'S WELDING
LLC

CUSTOMER SERVICE

Our equipment is known for its performance, reliability and durability. Our customers count on White's equipment day in and day out. When you're running equipment on a job site, you expect it to perform until the job is done.

If issues arise, we have field service solutions to get your equipment back to work quickly.

SALES

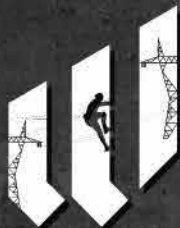
580-571-7784

24/7 DISPATCH

580-216-3033

SERVICE@WHITESENERGY.COM





WHITE'S WELDING
LLC

Phone 580-571-7784

P.O. Box 1761
Woodward, OK 73802



 WHITE'S WELDING, LLC

 WHITE'S WELDING

 WHITESWELDING1

WHITESWELDINGLLC.COM

