

# PFXPP2Bxxxxxxxx00 (PS5000B, Core i7 Model)



## Industrial PC Specifications:

<b>Supported OS</b>	Windows 7 Ultimate (64 bit) Windows Embedded Standard 7 (32 bit/64 bit) MUI Windows Embedded 8.1 Industry (64 bit) Windows 10 IoT Enterprise 2019 LTSC
<b>CPU</b>	<b>Intel Core i7-4650U 1.7 GHz (2 Cores, 4 Threads)</b> 4 MB Intel® Smart Cache Max Turbo Frequency: 3.3GHz Bus Speed: 5 GT/s
<b>Main Memory</b>	8 GB / 16 GB, DDR3L 1600 MHz, SO-DIMM SDRAM 512 KB NVRAM for the user applications
<b>Storage Memory</b>	HDD (500GB / 1TB) / SSD (256GB) x 2, CFast (16GB / 32GB) x 1*1
<b>Graphic Accelerator</b>	Intel HD Graphics 5000
<b>Video Memory</b>	Up to 2 GB, Shared system memory
<b>Graphics</b>	Full HD TFT (1,920 x 1,080 pixels)

### Electrical specifications:

<b>Rated Input Voltage</b>	DC: 24 Vdc ±20 %
<b>Power Consumption</b>	40 W
<b>In-Rush Current</b>	8.9 A

### Environmental specifications:

<b>International Safety Standards</b>	CCC, CE, C-Tick, EAC, ATEX, KC, UL,cUL (60950) Listed, Marine DNV-GL
<b>Surrounding Air Temperature</b>	[Vertically placed (Vertical mounting)] 0 to 55 °C [32 to 131 °F] (When using SSD or CFast) 0 to 45 °C [32 to 113 °F] (When using HDD) 0 to 45 °C [32 to 113 °F] (When using PCI/PCIe) [Horizontally placed (Horizontal mounting)] 0 to 50 °C [32 to 122 °F] (When using SSD or CFast) 0 to 40 °C [32 to 104 °F] (When using HDD)
<b>Storage Temperature</b>	-30 to +70 °C [-22 to 158 °F]
<b>Ambient Humidity</b>	10 to 95 % RH (Wet bulb temperature: 40 °C [104 °F] max. - no condensation)
<b>Storage Humidity</b>	10 to 95 % RH (Wet bulb temperature: 40 °C [104 °F] max. - no condensation)
<b>Pollution Degree</b>	For use in Pollution Degree 2 environment
<b>Air pressure (altitude range)</b>	2,000 m [6,561 ft.] max.
<b>Vibration resistance</b>	[Operation for products with SSD or CF card storage device] 5 to 500 Hz: 2 Grms [Operation for products with HDD storage device] 5 to 500 Hz: 1 Grms
<b>Concussion resistance</b>	IEC 60068-2-27 Ea test
<b>Electromagnetic Compatibility (EMC)</b>	Immunity to High Frequency Interference Electromagnetic Emissions Class A

### Interface specifications:

<b>Serial (COM1)</b>	RS-232C / 422 / 485, Connector: D-Sub 9 pin (plug)
<b>USB Type A</b>	Conforms to USB 3.0 (Type A) x 2 Conforms to USB 2.0 (Type A) x 2
<b>Ethernet (LAN1)</b>	10 / 100 / 1000 Mbit/s (RJ-45 Modular jack)
<b>Ethernet (LAN2)</b>	10 / 100 / 1000 Mbit/s (RJ-45 Modular jack)
<b>Video</b>	Display Port x 2
<b>Expansion slot</b>	PCIe(x1) x 1 + PCIe(x4) x 1 / PCI x 2 / PCI x 1 + PCIe(x4) x 1*1
<b>Internal Expansion</b>	mini PCIe x 2

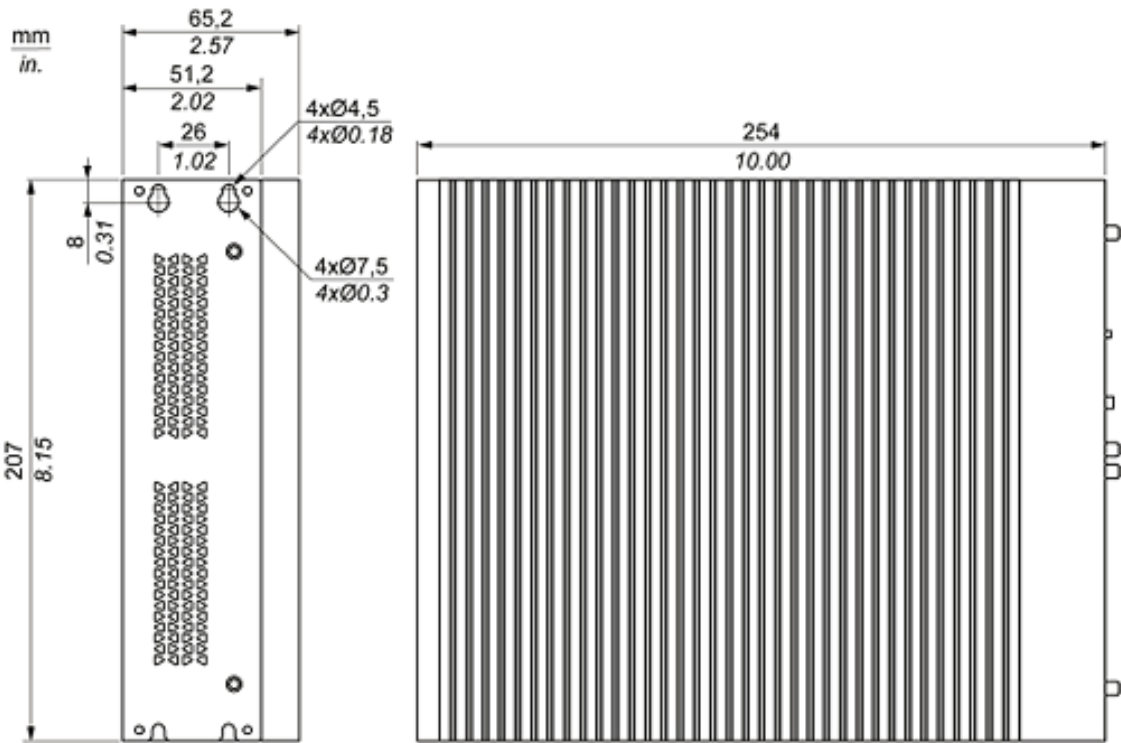
### Structural specifications:

<b>Cooling method</b>	Passive heat sink
<b>Protective structure</b>	IP66 front side of display
<b>Installation Method</b>	Vertically placed (Vertical mounting) Horizontally placed (Horizontal mounting)
<b>External dimensions</b>	0 slot type: W65.2 x H207 x D254 mm [W2.57 x H8.15 x D10 in.] 2 slot type: W103.2 x H207 x D254 mm [W4.06 x H8.15 x D10 in.]
<b>Weight</b>	0 slot type: 3.1 kg [6.8 lb] 2 slot type: 3.9 kg [8.6 lb]

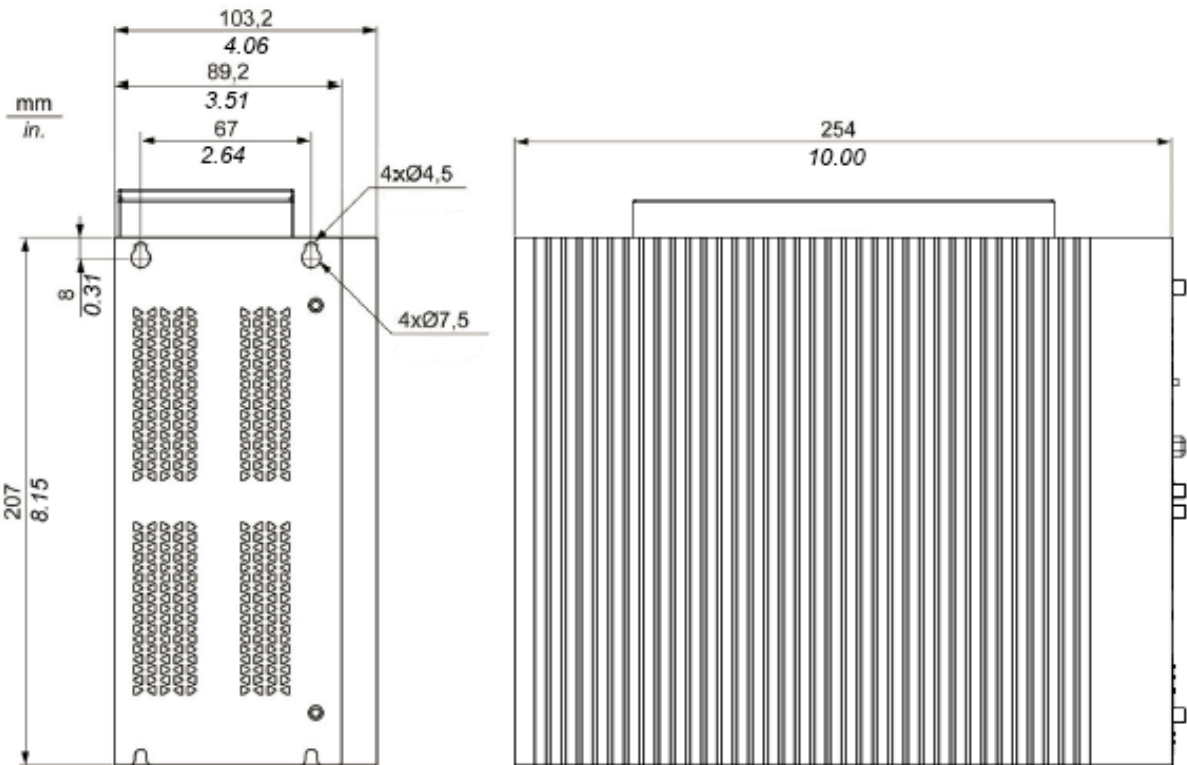
Dimensions:

External Diagram Installation

# 0 Slot Type



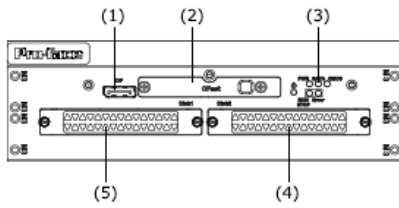
# 2 Slot Type



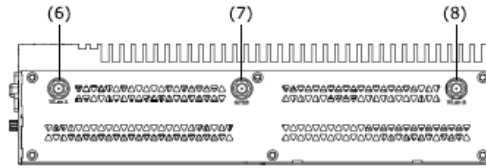
**External dimensions with attached cable / Descriptions**

**0 Slot Type**

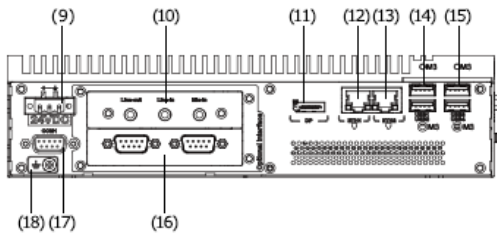
[Side View]



[Top View]



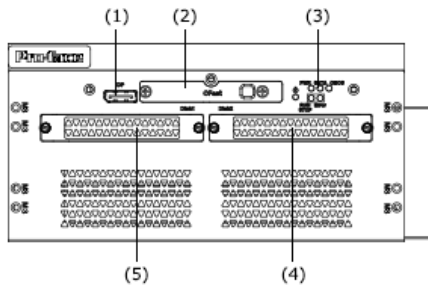
[Bottom View]



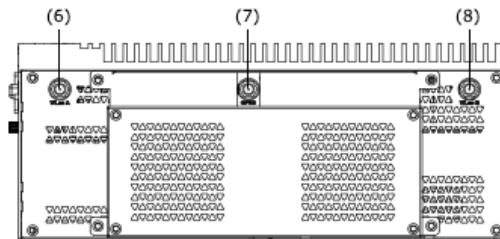
(1) DisplayPort 2 (2) Slide-in CFast slot (3) LEDs and power/reset button (4) HDD/SSD 1 (can be RAID configuration) (5) HDD/SSD 2 (can be RAID configuration) (6) SMA connector for the wireless LAN external antenna (7) SMA connector for the GPRS external antenna (8) SMA connector for the wireless LAN external antenna (9) DC power connector (10) Optional interface 1 (11) DisplayPort 1 (12) Eth1 (10/100/1000 Mbit/s) IEEE1588 (13) Eth2 (10/100/1000 Mbit/s) IEEE1588 (14) USB1 and USB2 (USB 3.0) (15) USB3 and USB4 (USB 2.0) (16) Optional interface 2 (17) COM1 port RS-232/RS-422/RS485 (isolated) (18) Ground connection pin

**2 Slot Type**

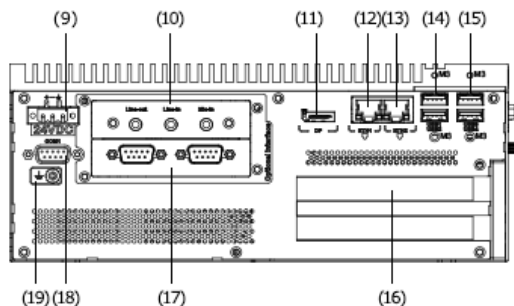
[Side View]



[Top View]



[Bottom View]



(1) DisplayPort 2 (2) Slide-in CFast slot (3) LEDs and power/reset button (4) HDD/SSD 1 (can be RAID configuration) (5) HDD/SSD 2 (can be RAID configuration) (6) SMA connector for the wireless LAN external antenna (7) SMA connector for the GPRS external antenna (8) SMA connector for the wireless LAN external antenna (9) DC power connector (10) Optional interface 1 (11) DisplayPort 1 (12) Eth1 (10/100/1000 Mbit/s) IEEE1588 (13) Eth2 (10/100/1000 Mbit/s) IEEE1588 (14) USB1 and USB2 (USB 3.0) (15) USB3 and USB4 (USB 2.0) (16) PCI/PCIe (peripheral component interconnect express) slots (17) Optional interface 2 (18) COM1 port RS-232/RS-422/RS485 (isolated) (19) Ground connection pin