

PREPARATION:

- 1.1 Wash and degrease a car thoroughly.
- 1.2 Dry the car completely.
- 2 Wipe the surface of the car with Ceramic Pro Cleaner applied on a microfiber towel.
- 3 Make sure there is no dirt or liquid left on the car.



PREPARATION:

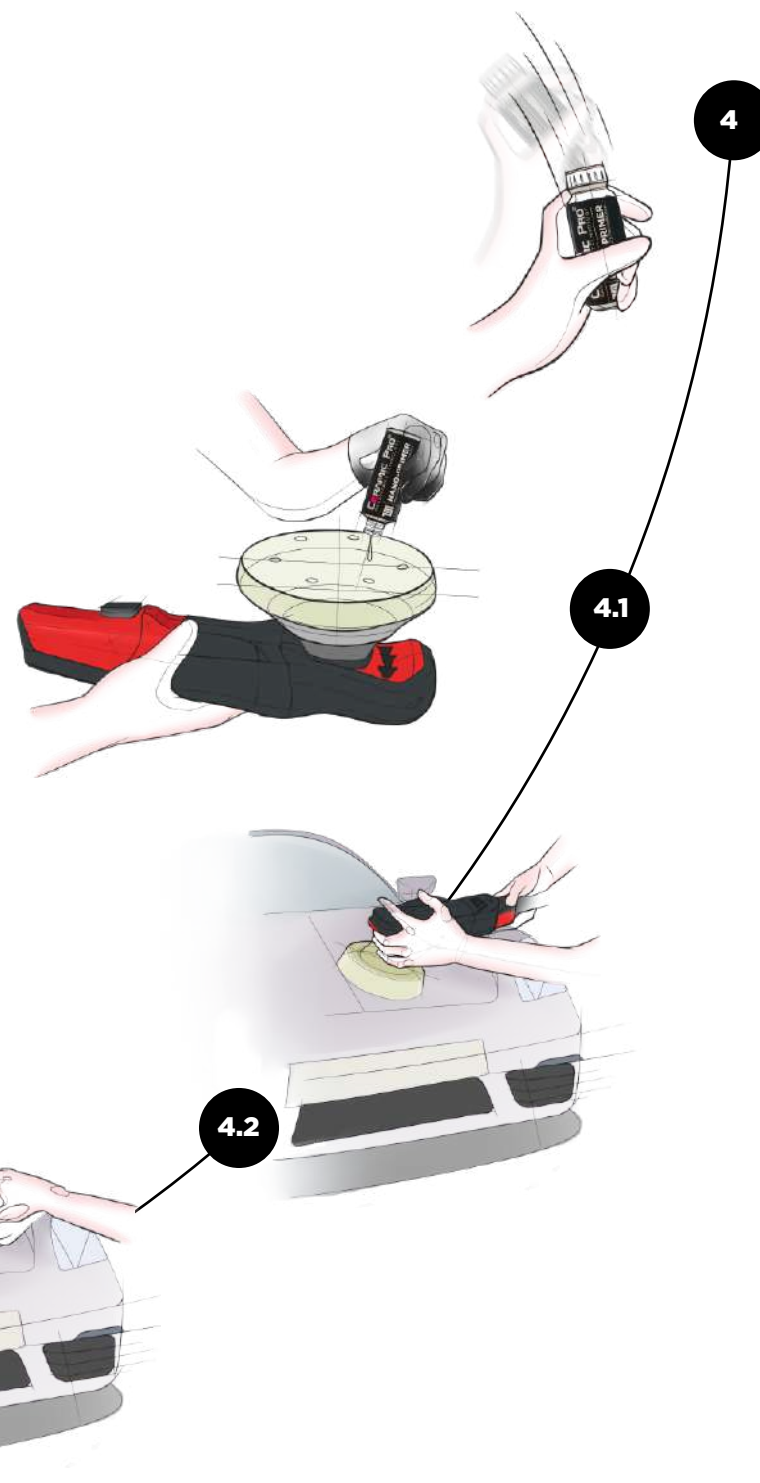
NOTICE! The next steps of the process are only to be performed by trained professionals. Request assistance from a professional in case you do not have relevant experience in car polishing.

4 Shake the Ceramic Pro Nano-Primer bottle for 3-5 minutes right before the application.

4.1 Apply several drops of Ceramic Pro Nano-Primer on a buffing pad of your polishing machine. Use a soft buffing pad.

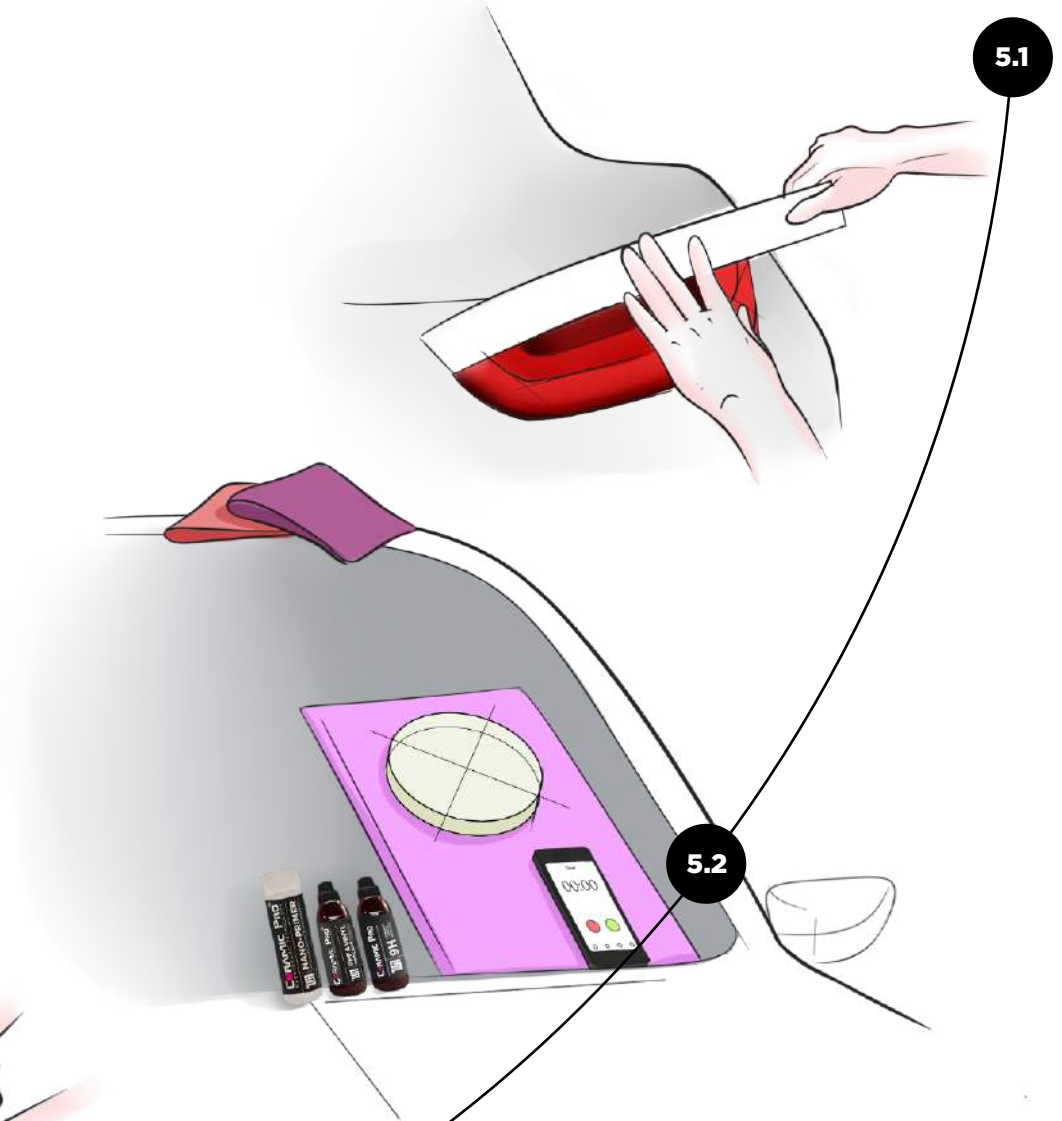
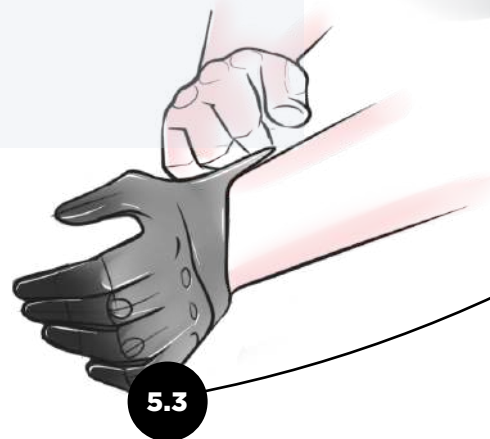
4.2 Apply Ceramic Pro Nano-Primer on a small surface section (no more than 1 sq. m). Spread the product with the polishing machine adjusted to minimum speed (600-1000 RPM) without pressure or heating.

4.3 Spread Ceramic Pro Nano-Primer with a microfiber towel right after buffing. After 1-2 hours you can start applying Ceramic Pro 9H.



PREPARATION:

- 5.1** Cover glass, plastic and rubber elements of the car with an automotive masking tape before applying the product with a spray gun.
- 5.2** Prepare all the tools. It is recommended to put them on car's windshield. You will require two clean microfiber towels, one of them will be used for the final stage: leveling the product. Also, prepare a timer or a mobile phone with a stopwatch function, and a flashlight.
- 5.3** Make sure you wear gloves before applying the coating.



APPLICATION:

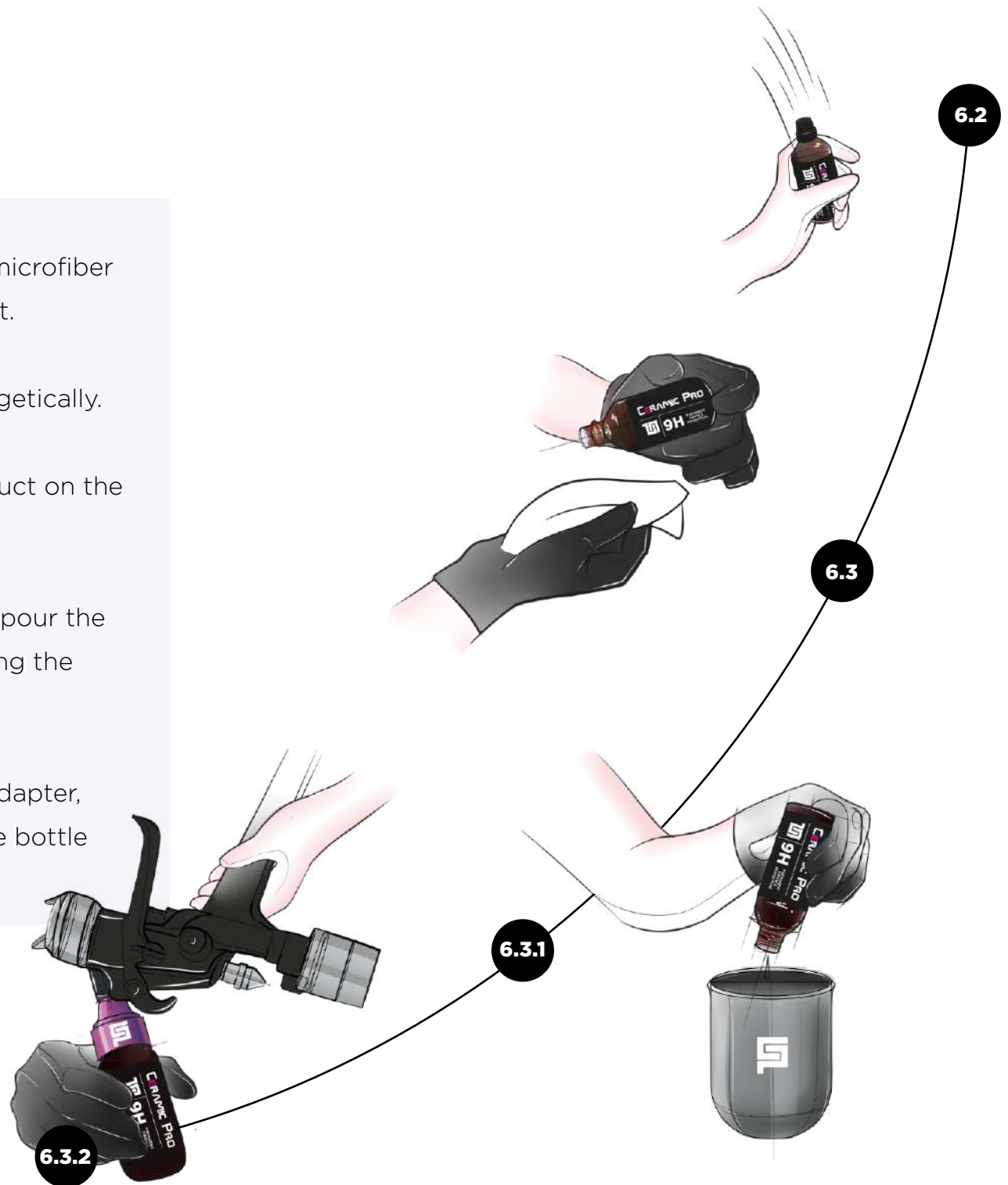
6.1 Cover an applicator pad with a small microfiber cloth that is included in the product kit.

6.2 Shake the Ceramic Pro 9H bottle energetically.

6.3 Apply a generous amount of the product on the pad.

6.3.1 If you use a spray gun for application, pour the product in spray gun's cup after shaking the Ceramic Pro 9H bottle.

6.3.2 If you have a Ceramic Pro spray gun adapter, turn the spray gun over and attach the bottle with the product.



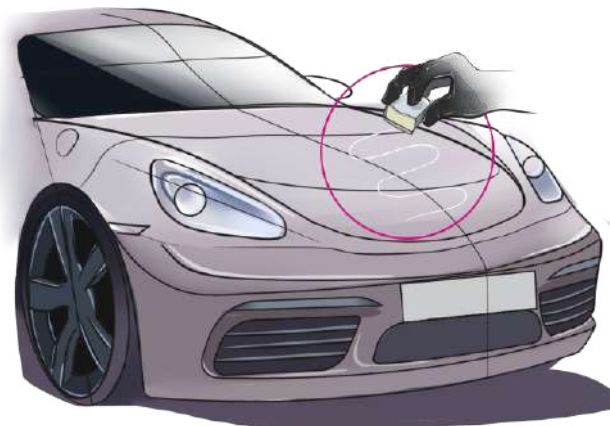
APPLICATION:

7.1 Apply the product with zigzag movements from side to side, without pressure. Work on small segments (no more than 60 x 60 cm); make sure not to leave any part uncoated.

7.2 Apply the product in a cross-hatch pattern.

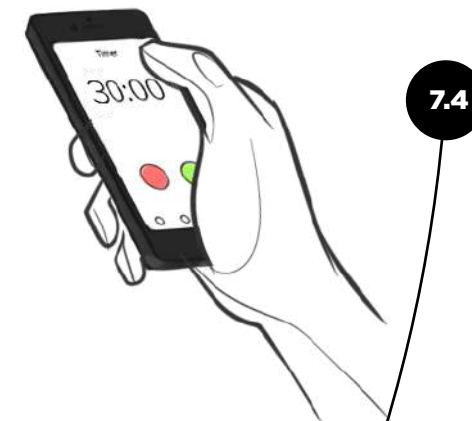
7.2.1 Spray gun application can only be done by a specialist. Segments must overlap in the process of application.

7.3 Make sure the segment's surface is fully covered and no part was missed.



APPLICATION:

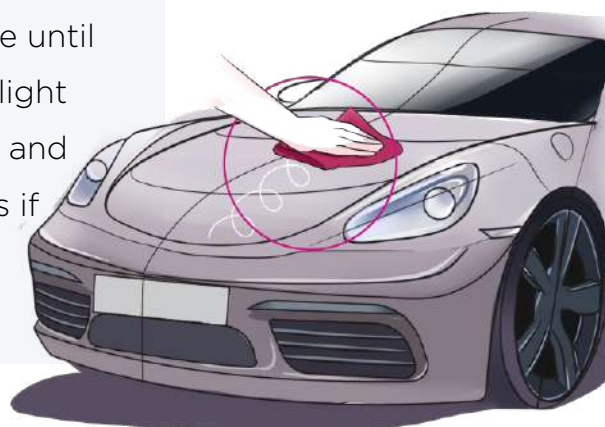
- 7.4** Wait for 30 seconds, use a timer. If the ambient temperature is above 25°C, start leveling the layer right after the application.
- 7.5** After 30 seconds start leveling the product. Start with quick intensive movements without applying any pressure on the towel, and finish with longer movements, extending from side to side of the treated segment. Avoid circular movements.
- 7.6** For the final leveling, take a clean microfiber towel and slightly wipe the treated surface until it becomes perfectly glossy. Use the flashlight to check the surface for roughness, swirls and blurred parts. Repeat the levelling process if required.



7.4



7.5



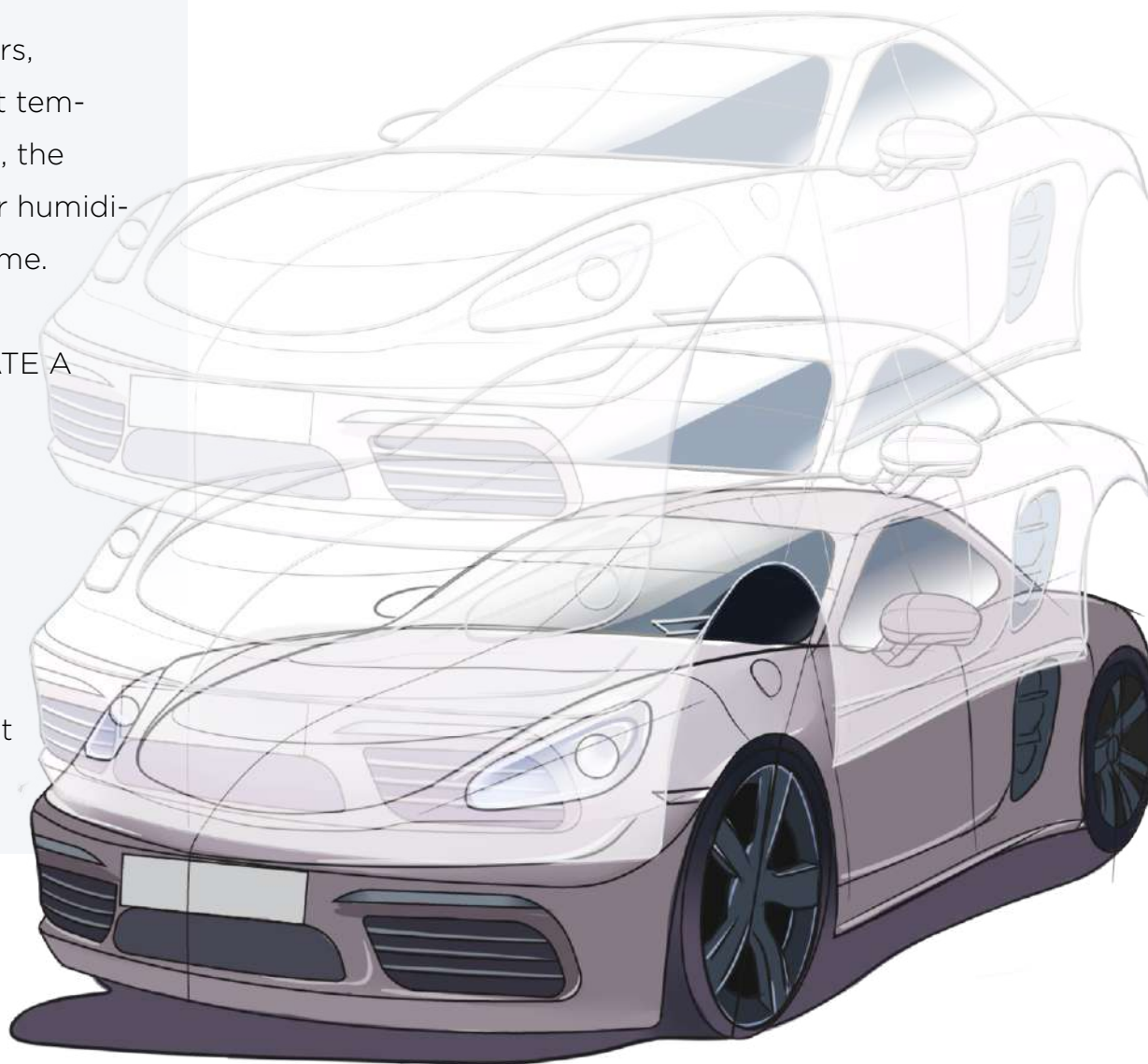
7.6

APPLICATION:

8.1 Apply the next layer in the next 1-2 hours, depending on air humidity and ambient temperature. The higher the temperature is, the quicker the coating crystallizes. High air humidity reduces the coating crystallization time.

8.2 2 LAYERS OF CERAMIC PRO 9H CREATE A PROTECTIVE BASE:

- Superhydrophobic effect
- UV and color fade resistance
- Increased scratch-resistance
- Resistance to chemicals
- Rich and enhanced car paint color
- Deep gloss and “brand new car” effect



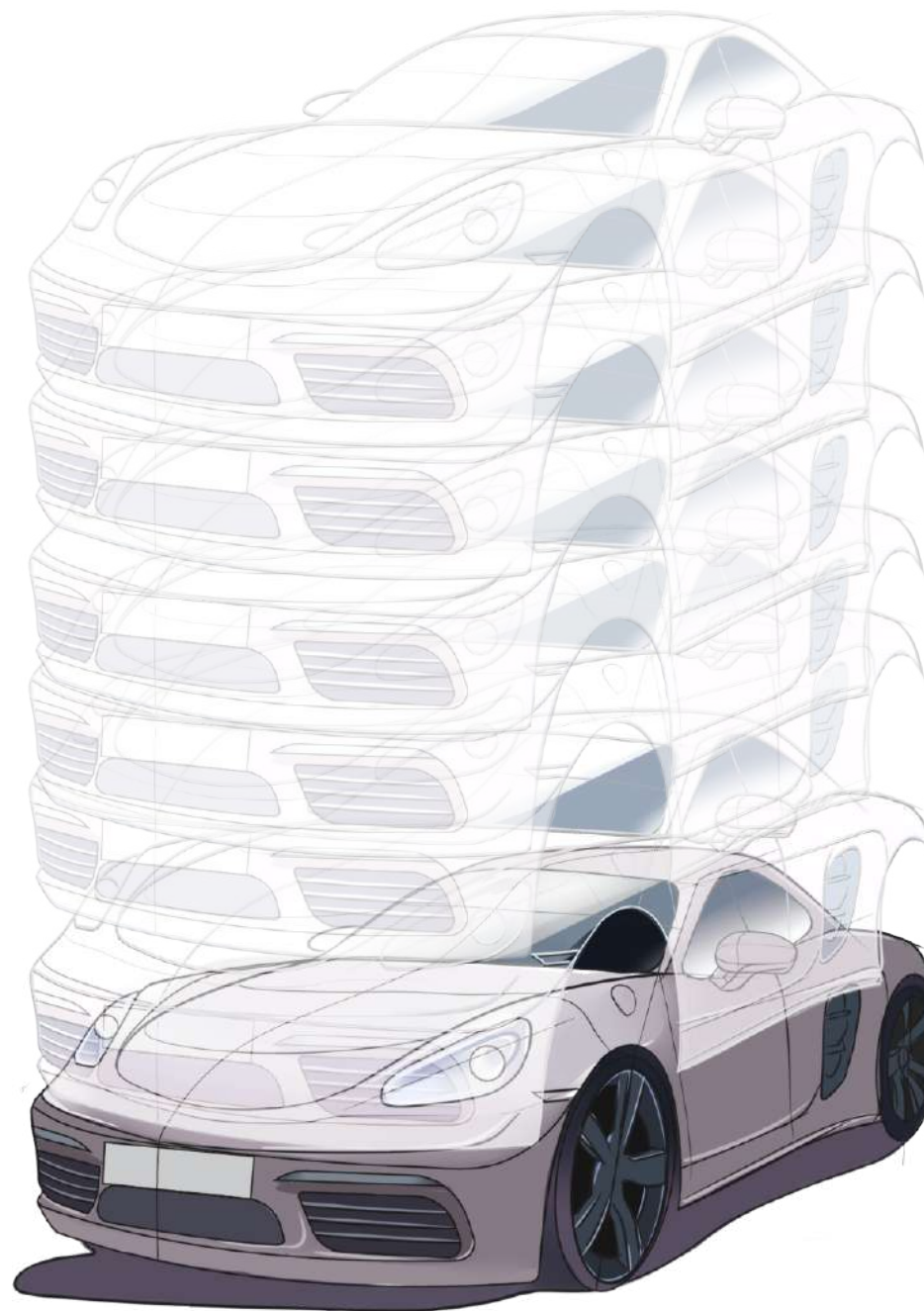
APPLICATION:

4 LAYERS OF CERAMIC PRO 9H ADDITIONALLY ENHANCE:

- Color and gloss depth
- Damage and scratch resistance
- Chemical resistance

6 LAYERS OF CERAMIC PRO 9H ENSURE:

- Preservation of the quality of car factory paint
- Presence of a solid protective coating
- Unsurpassed aesthetic effect
- Anti-graffiti effect
- Increased chemical resistance
- Longevity of the surfaces



APPLICATION:

10 LAYERS OF CERAMIC PRO 9H PROVIDE
MAXIMUM PROTECTION:

- Chemical resistance (including resistance to acids)
- Increased resistance to mechanical damage
- Enhanced anti-graffiti effect
- Flawless beauty of the vehicle

8.3 Apply Ceramic Pro Light for superhydrophobic effect, color depth and extra gloss.

