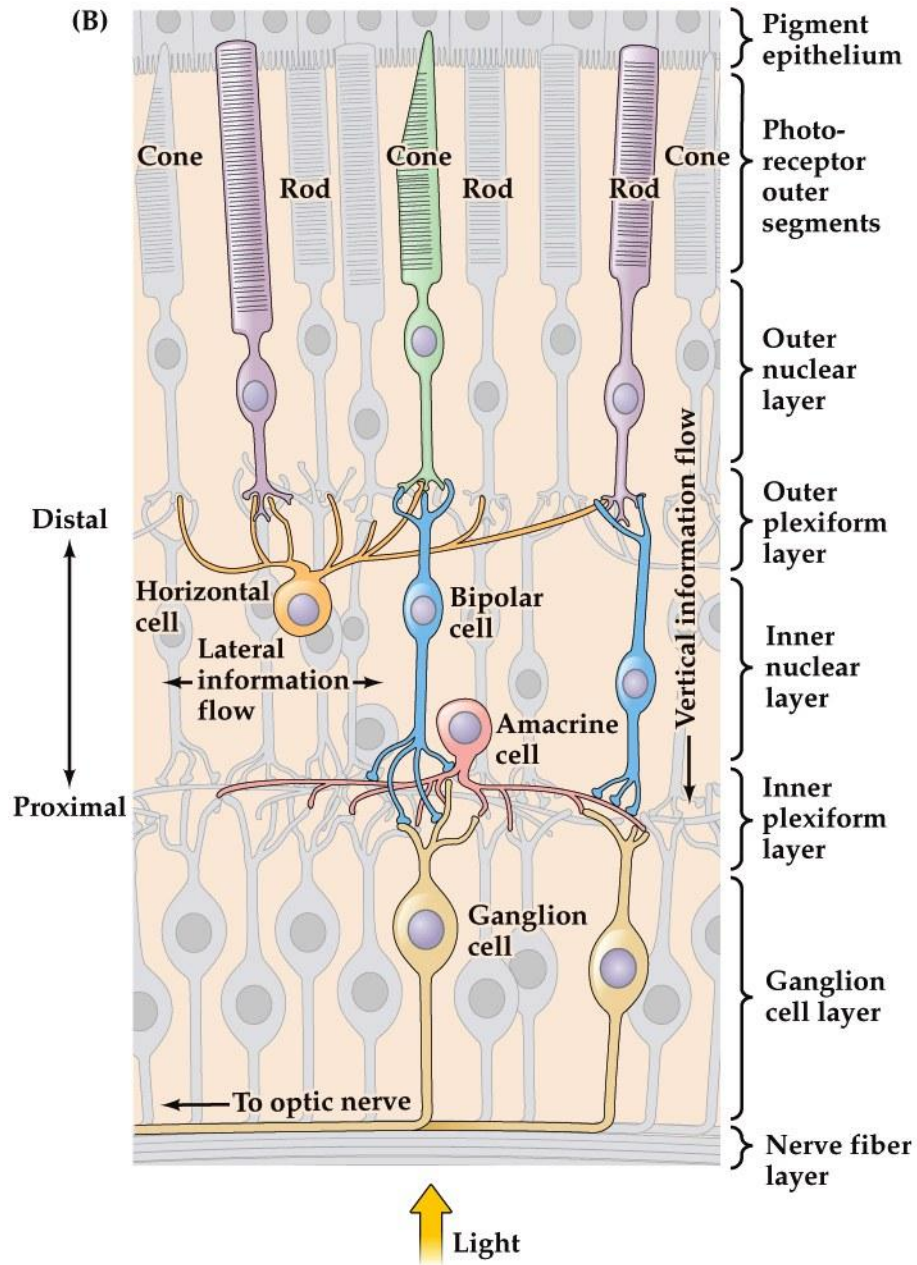
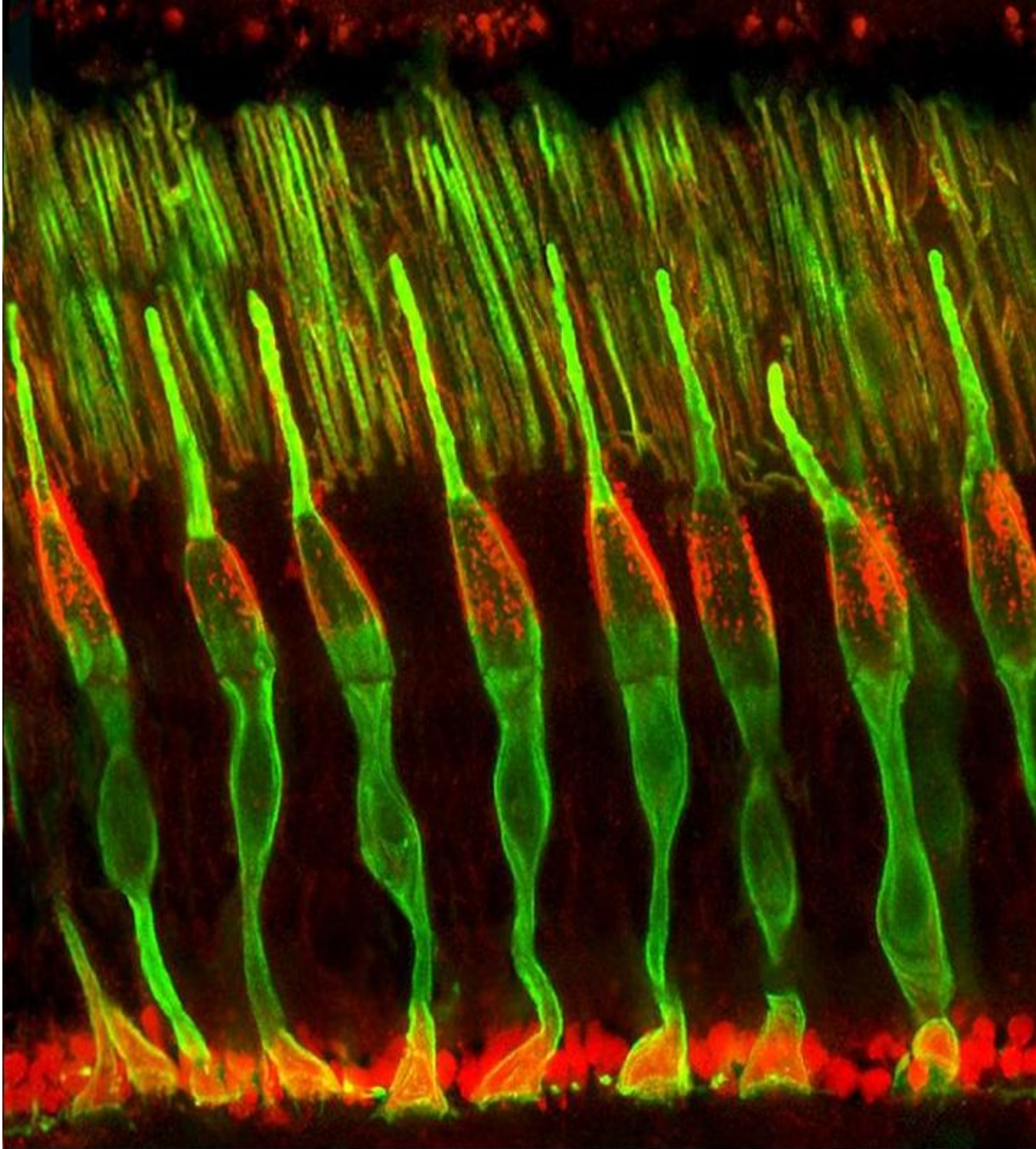


Structure of the retina (Part 2)



NEUROSCIENCE 5e, Figure 11.5 (Part 2)

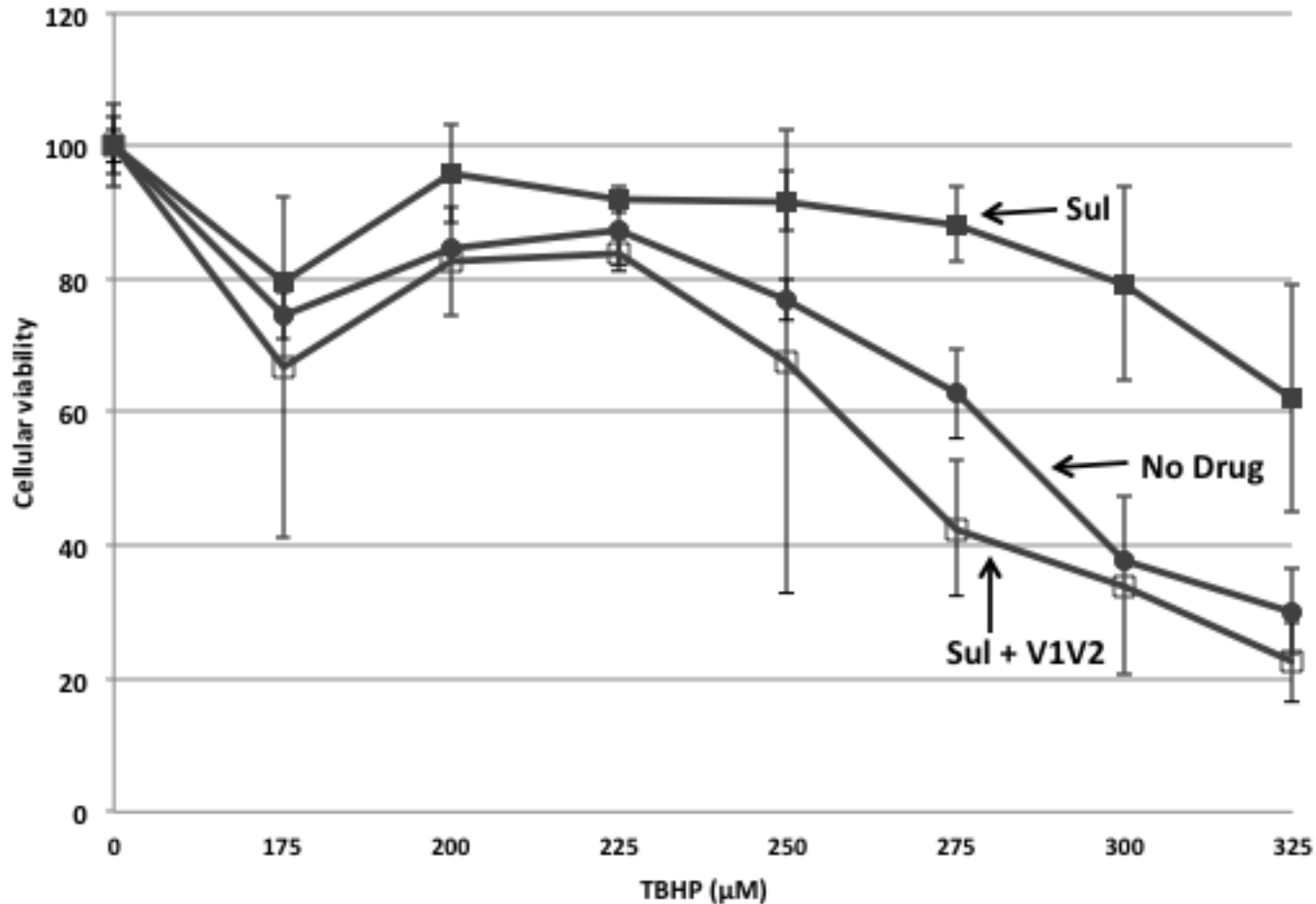
© 2012 Sinauer Associates, Inc.



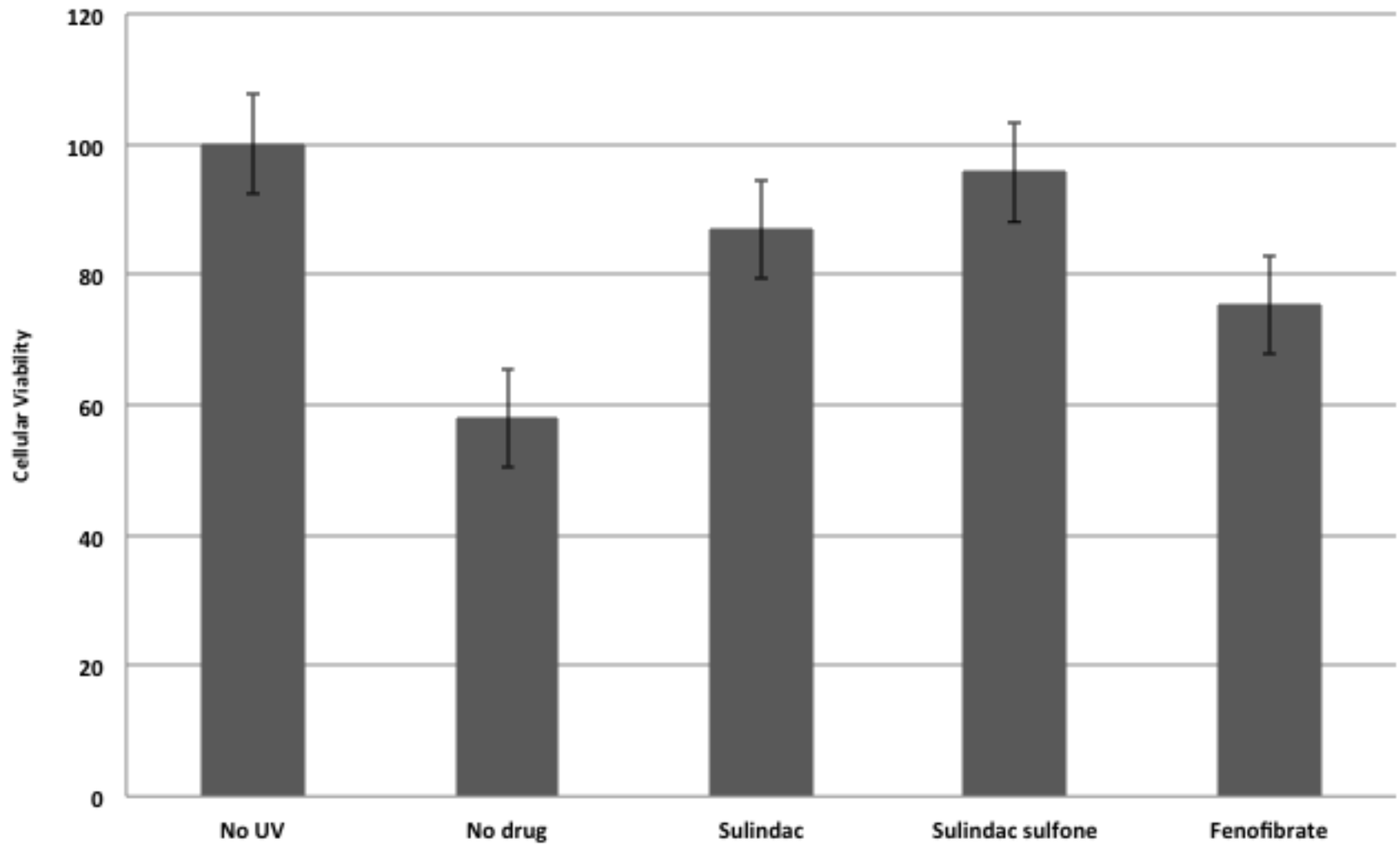
Age-Related Macular Degeneration



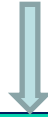
SULINDAC PROTECTION OF RPE CELLS REQUIRES PKC EPSILON



Protection of RPE Cells Against UV Damage by Sulindac and Fenofibrate



Allbino mice acclimatized in normal light cycle for 3 days



Sulindac injected intravitreally



Mice dark adapted for 12hrs



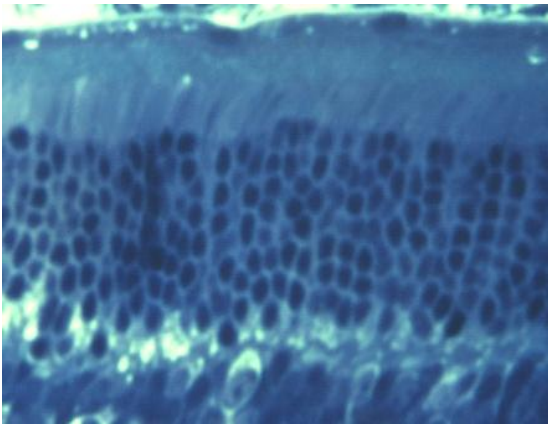
- Pupils dilated and mice
- exposed to 6k lux white light for 1hr



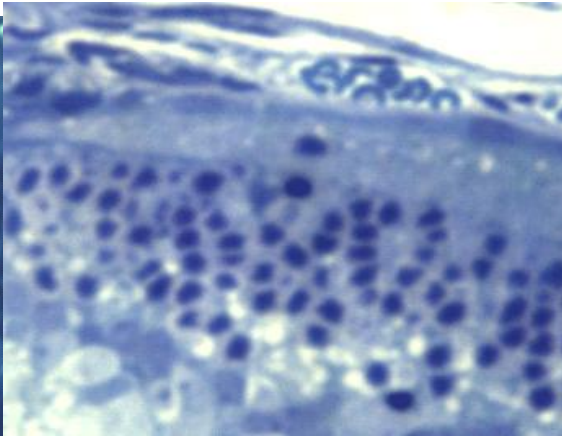
Post exposure wait = 5 days



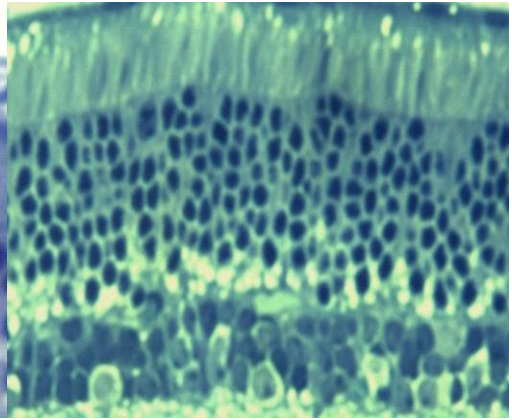
- Retina evaluated for loss of photoreceptor cells
- Western blotting of retinal protein to measure rhodopsin



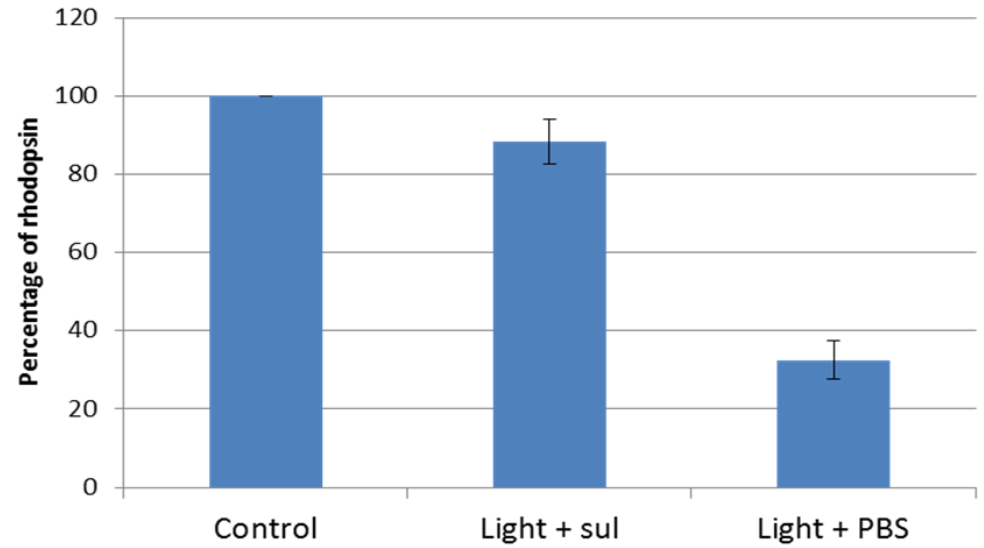
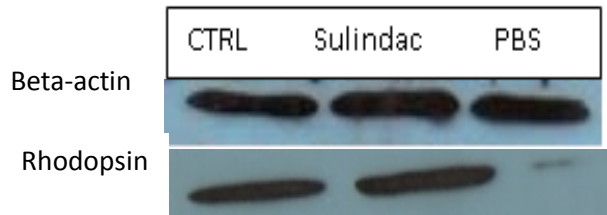
Control (No light)



6K lux Light ~~BS~~



6k Lux light + sulindac



***in vivo* Protection of retinal cells against light damage:** Evidence of *in vivo* protection of photoreceptor cells following intravitreal injection of sulindac is provided by the western blotting of rhodopsin. These results show that in light damage experiments protein from sulindac treated eyes retained about 3 times more rhodopsin in comparison to eyes injected with PBS.