



THE INSPIRED COMMUNITY PROJECT

Providing the Tools
for a Life of Learning

CONTENTS

1. The Journey
2. Our Services
3. Mission, Vision & Values
4. SWOT Analysis
5. The Inspired Community Model
6. Where to Start: The Bronx
7. Our Board of Directors & Partners
8. Publications & Media



THE JOURNEY



**Unimaginable
Joy**



**Unexpected
News**



**Unanswered
Questions**



**Unable to
Accomodate**





THE INSPIRED COMMUNITY PROJECT

Early Intervention & Workforce Development Program
501(c)(3) Nonprofit

OUR SERVICES

EARLY INTERVENTION

There are currently thousands of children in the Bronx who are authorized for services but have no one to deliver them.

Per year we will provide:

- 26,000hrs of Applied Behavior Analysis
- 23,000 hr of Speech Therapy
- 19,500 hrs of Occupational Therapy

FAMILY ADVOCACY COACHING

Families are the key to early intervention. Knowing your rights, what lies ahead & how to navigate difficult waters is essential.

Per year we will:

- Support over 200 families with
- Special Education Roadmaps
- Accessible & Translated Materials

TRAINING & EXCELLENCE

Educational opportunities, paid trainings, career and certification supports are scarce in the Bronx.

We will provide:

- Paid Training
- High-quality & hands on learning
- Certification Support & career advancement.

A circular inset photograph of a young girl with dark, curly hair, wearing a blue and white striped shirt. She is smiling and looking upwards, with her hands raised in a gesture of excitement or play. In front of her is a table covered with various colorful wooden blocks (red, yellow, green, blue, orange). The background is slightly blurred, showing what appears to be a classroom or playroom setting.

OUR PLAN

MISSION

Our mission is to create self-sustaining, hyper-local special education communities. Through direct instruction, high-quality training, hands-on support, and a people-first focus, we are creating a sustainable foundation for future generations within the special education community.

VISION

Our vision is equitable access to special education services and resources. We believe that empowering and fostering professionals and advocates in the community will support and serve its youngest members.



EQUITY

Bringing high-quality therapeutic services, training programs, resources and coaching to the communities in most need.

ADVOCACY

Access to resources is just the beginning. Supports and trainings allow family and community members to grow exponentially.

EMPOWERMENT

Resources and support create a tide of change that will continue to uplift the entire community far beyond its initial impact; continuing for generations.

STRENGTHS

Founded by educators with decades of experience and knowledge not only of early intervention and special education, but business development in the nonprofit space.

WEAKNESSES

Initial funding for startup nonprofits is near impossible. Grants for general operating or staff costs are incredibly hard to find.

SWOT ANALYSIS

OPPORTUNITIES

This blueprint model of "Inspired Community" creates self-sustaining, hyper-local models that can be scaled and replicated to support any community in need.

THREATS

Services are paid for by Medicaid. The government's funding to the Department of Health can vary. Other income is needed.

THE INSPIRED COMMUNITY MODEL

HYPER-LOCAL

Money stays in the community.
Recruiting from the community for
services provided to the community.



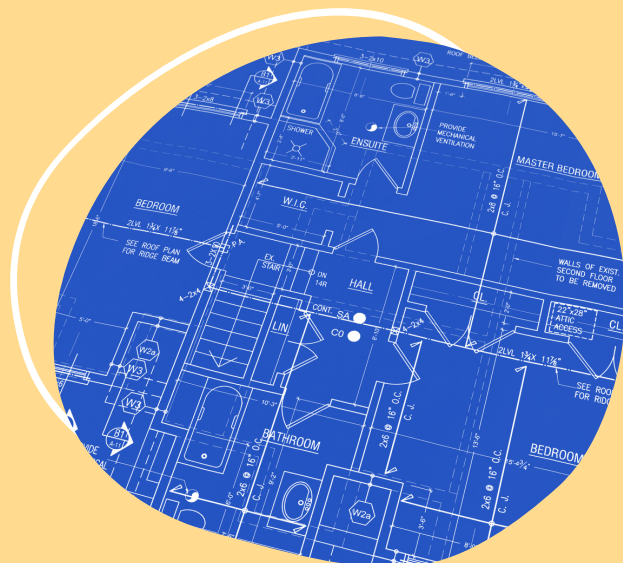
SELF-SUSTAINING

No more fundraising for program costs
Program partners and multiple revenue
streams ensure independent longevity.




BLUEPRINT

The Bronx will serve as a blueprint to bring the community-focused
model to all underserved neighborhoods in NYC.



THE BRONX



#1

HIGHEST

referral rate for Early Intervention services in the entire New York State (not just in the City).



LOWEST

participation in the state due to the lack of programs, trained professionals and those willing to travel to the Bronx.



25%

of Bronx Children

WILL NEVER

even receive even an initial evaluation for services due to the scarcity of access to resources and information.



LIFELONG LEARNER

"Equity in education is a
fundamental human right"

- Jill Moses, Founder & CEO

After 15 years as a Special Educator and Board Certified Behavior Analyst serving the neurodiverse community all over NYC, she has the passion, experience, skillset, and resources to enact true change.

In 2021, she founded the only self-sustaining, female educator & BIPOC led, holistic early intervention program in New York. Not only providing empirically sound therapeutic services to neurodiverse children, but supporting and uplifting community members into special education careers, financial literacy and wellness support.

"It's not about providing a service, it's about enriching
and empowering an entire community."

OUR BOARD



Taina Palombo-Price
[She/Her]
Product Marketing
Leader at Meta & Parent
of Neurodiverse Child



Kristynna Soto-Vaughan
[She/Her]
Neurodivergent,
LGBTQIA, Board Certified
Behavior Analyst & Parent
of Neurodivergent Child



Jen Abrams
[She/Her]
Forensic Accountant
& Parent of
Neurodiverse Child



Kelly Cassaro
[She/Her]
Chief of Learning at
Generation &
Education Equity
Advocate



Susan Minervini
[She/Her]
Former Board Vice
President of Women
for Sobriety & Equity
Advocate

We have a 100% giving Board of Directors

PROGRAM PARTNERS



FAMILY SUPPORT

We partner with community based organizations that provide transition support, wellness support and financial literacy support.

CAREER OPTIONS

Our Training & Excellence program will support our staff to advance their career from \$15/hr entry level positions to becoming highly sought after \$25-\$30/hr certified therapy professionals with our partners.

REVENUE STREAM

Our partners provide us with secondary revenue streams for use of space; shared trainings as well as referral fees for both children and staff that join their programs.



BRONX*Times*

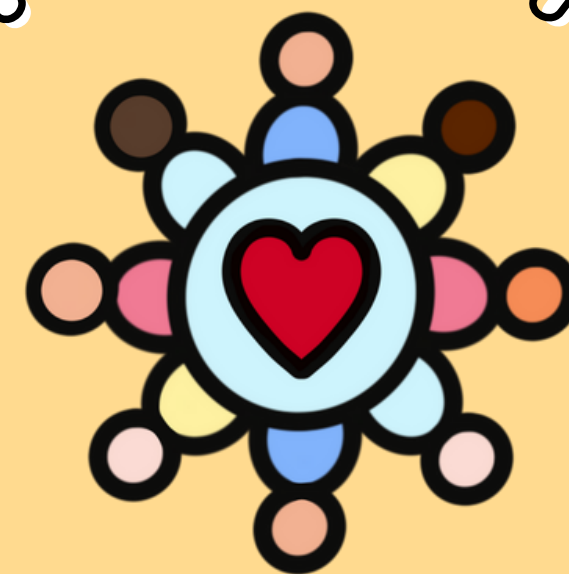
2022
HONOREE
POWER WOMEN
OF THE BRONX



Get Inspired!
Click to check out our recent awards and publications.



GET INSPIRED



JILL@INSPIREDCOMMUNITYPROJECT.ORG
WWW.THEINSPIREDCOMMUNITYPROJECT.ORG