

OUT OF BOUNDS: SUPPORTING YOUTH IN THE JUVENILE JUSTICE SYSTEM

Sheila Stinnett, MA, LPC

Executive Director

Edmond Family Counseling

ssinnett@edmondfamily.org

Introduction



things
about me

A graphic of a dark chalkboard with the words "things about me" written on it. "things" is in a green, hand-drawn, blocky font. "about" is in a white, cursive script font. "me" is in an orange, hand-drawn, blocky font.

Workshop Framework



- ▣ Structure and History of the Oklahoma Juvenile Justice system
- ▣ Red flags for potential juvenile interaction with law enforcement
- ▣ How to support youth and families navigating the juvenile justice system

Parking Lot Procedures



Stats and Facts

Mode = value that occurs most often

Eg. 7, 5, 3, 5, 4, 5
ans = 5

Median = The middle number, Eg. 1, 2, 3, 4, 5
ans = 3

Mean = $\frac{\text{Sum of Numbers}}{\text{Num of Numbers}}$

Eg. $\frac{4 + 5 + 7 + 9 + 10}{5} = \frac{35}{5} = 7$

The Range = largest value - smallest value
2, 5, 7, 9 = $9 - 2 = 7$

Averages



Presenting Data

Bar chart



Pie chart



Sector

Histogram



Like a bar chart with no spaces

Stem & Leaf

0 | 2 5
1 | 3 7 9
2 | 1 4 8 9
3 | 0
4 | 5 6
5 | 7 9

Primary Data = Data you collect your self

Data

Secondary Data = Data you look up in books, newspapers or the internet.

Numerical = Numbers

Categorical = Words

Continuous

Discrete

Ordinal

Collecting Data

Tally chart

Eg

Type	Tally	How many
Bus		5
Car		5
Van		3
Motorcycle		4

Where to Begin



An Abundance of Uncertainty

ARE WE LOOKING AT UP TO
ANOTHER YEAR OF UNCERTAINTY?

MAYBE _
MAYBE NOT



Waltzing Down a Familiar Path



Increases in...

- ▣ Stress
- ▣ Anxiety
- ▣ Depression
- ▣ Reactivity
- ▣ Isolation

Coming Home to Roost



The Fountain of Youth



The Root of the Problem

Developmental

Risk Taking

Novelty Seeking

Reward Sensitive/

Punishment

Insensitive

Environmental

Access/Opportunity

Stability

Peer Relationships

Stress

Trauma History

The Umbrella of Authority



History of Juvenile Justice in Oklahoma



Title X Section 2

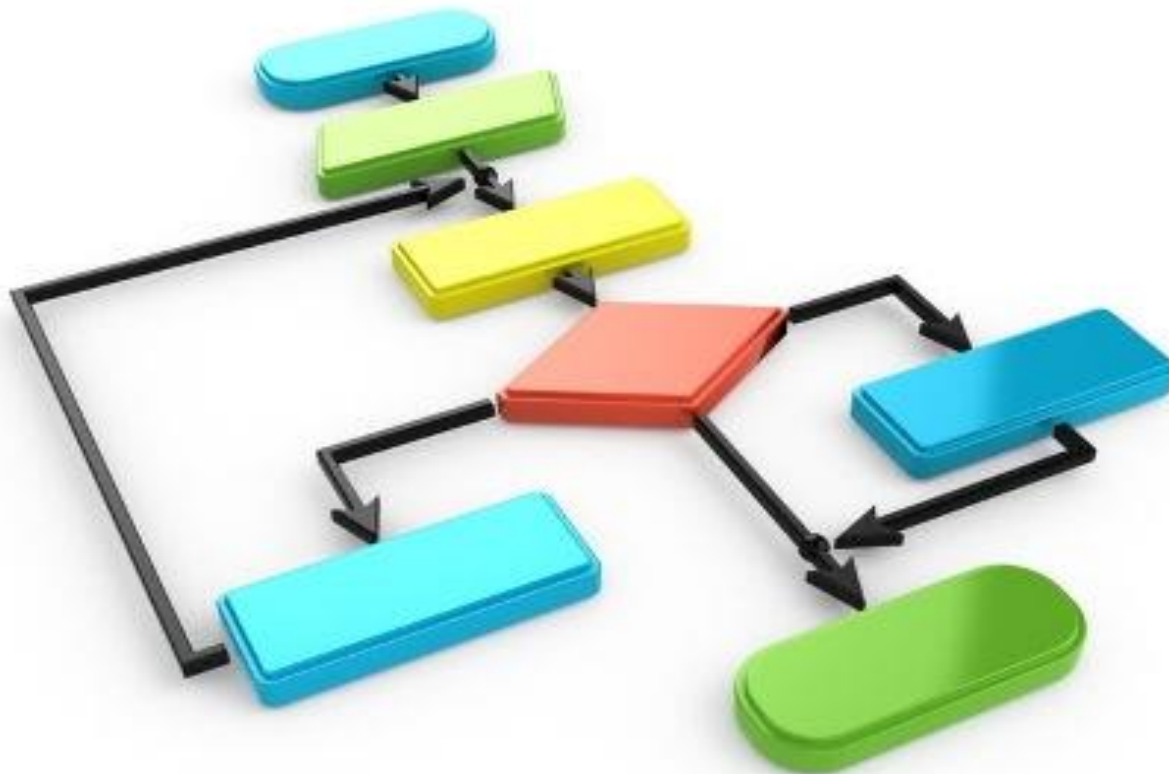
Oklahoma Juvenile Code

- ▣ Sets forth legal processes and procedures for youth
- ▣ Strives to recognize the unique needs of youth
- ▣ Desires to create opportunities for personal and social growth
- ▣ Focuses on individualized treatment
- ▣ Promotes responsibility
- ▣ Seeks to strengthen and preserve family ties when possible
- ▣ Aspires to enhance safety, security and stability

Activity: Show What You Know

VOCABULARY
Words Are
Important!

Understanding the System: Identifying Structure and Flow



Youth in the System



Keys for Success

- ▣ Expanding access to needed resources
- ▣ Having the right mindset
- ▣ Developing appropriate tools
- ▣ Focus on personal responsibility and locus of control
- ▣ Enhancing safety and security



Primary Target Enhancement of Relationships



Life Skill #1

Effective Communication



Life Skills #2

Emotional Regulation



Life Skill #3

Goal-Setting



Life Skill #4

Values Development



Life Skill #5

Pro-active Decision-Making



Substance Use and Juvenile Probation



Successful Probation: Focus on Youth and Family



- ▣ Define your role
- ▣ Support and educate
- ▣ Focus on short term goal completion to enhance motivation
- ▣ Obtain appropriate consent
- ▣ Work to expand access to resources as needed

Successful Probation: Focus on the Juvenile Justice System

- ▣ Learn about the system, reach out, ask questions
- ▣ Be available and accessible
- ▣ Develop a positive relationship with probation/parole/compliance officer
- ▣ Provide requested service documentation in a timely manner



Activity: Digging Deeper



Case Study #1



Case Study #2



Case Study #3



Case Study # 4



Case Study #5



**SHEILA STINNETT, MA, LPC
EXECUTIVE DIRECTOR
EDMOND FAMILY
COUNSELING**

sstinnett@edmondfamily.org