



# Civils Cafe

IAS Study Circle

Have fun. Achieve dreams.

Lead by IAS, IPS, IPos officers

## IMPORTANT CURRENT AFFAIRS FOR PRELIMS VOL 04

- UKRAINE, BLACK SEA AND ITS SURROUNDINGS
- MEDITERRANEAN SEA
- CASPIAN SEA
- INPUT TAX CREDIT
- NASA'S DART MISSION
- NEAR EARTH OBJECTS
- PAKKE TIGER RESERVE
- CLIMATE CHANGE PERFORMANCE INDEX
- ISTANBUL CONVENTION
- OPERATION SAHAYATA



SCAN TO EXPLORE





**IMPORTANT CURRENT AFFAIRS**

**FOR PRELIMS VOL 04**

**Civils Cafe**

IAS Study Circle

Have fun. Achieve dreams.

## EOGRAPHY

### 1. UKRAINE, BLACKSEA AND ITS SURROUNDINGS

**IN NEWS:** Russian troops have been deployed to stations along Ukraine's border, sparking fears among Western leaders and Ukraine itself that Moscow is planning an invasion. Russia seeks assurances from the US that Ukraine will not be inducted into NATO.

#### ABOUT UKRAINE



- It is the second-largest country by area in Europe after Russia, which it borders to the east and north-east.
- The capital is Kyiv (Kiev), located on the Dnieper River in north-central Ukraine.
- **Ukraine is bordered by**
  - **North: Belarus**
  - **East: Russia**
  - **South: Moldova, Romania and coastlines along Sea of Azov and Black Sea**
  - **Southwest: Hungary, Slovakia**

➤ **West: Poland**

- **In the far southeast, Ukraine is separated from Russia by the Kerch Strait, which connects the Sea of Azov to the Black Sea.**

**INDIA AND UKRAINE**

- After the breakup of the Soviet Union, the Government of India recognized the Republic of Ukraine as a sovereign independent country in December 1991
- Ukraine manufactures the R-27 air-to-air missiles which are in use by the IAF on its SU-30MKI fighters
- India is Ukraine's largest export destination in the Asia-Pacific and the fifth largest overall export destination.
- Pharmaceuticals account for the majority of Indian exports to Ukraine.
- India and Ukraine enjoy warm and friendly relations and cooperate in areas like Education, Mutual Legal Assistance and Outer Space cooperation.

**North Atlantic Treaty Organisation (NATO)**

- It is an intergovernmental military alliance between 30 countries across the world.
- Established in: 1949 with headquarters at Brussels in Belgium
- India is not a member country of NATO.

Check: **Minsk Agreements**

**BLACK SEA**

**IN NEWS:** Ukraine and the United States launched joint naval Exercise 'Sea Breeze' in the Black Sea. The exercise has been held since 1997, involving NATO states and their allies.





- The Black Sea, also known as the **Euxine Sea**, is one of the major water bodies and a famous inland sea of the world.
- It is located between Eastern Europe and Western Asia.
- It is surrounded by the Pontic, Caucasus, and Crimean Mountains in the south, east and north respectively.
- The Black Sea is also connected to the **Sea of Azov** by the **Strait of Kerch**.
- **Black Sea connects with the Mediterranean Sea through the Bosphorus Strait, and then through the Sea of Marmara and the Dardanelles Strait (3 Turkish straits systems)**
- **Rivers flowing into Black Sea:** Danube, Dnieper and Don via the Sea of Azov Rioni, Kodori and Inguri Chorokh, Kyzyl-Irmak, Eshil-Irmak, Sakarya, Southern Bug and Dnister
- **Bordering countries of Black Sea are: Russia, Ukraine, Georgia, Turkey, Bulgaria and Romania.**
- This salt water sea happens to be the largest water body with a meromictic basin, which means the movement of water between the lower and upper layers of the sea is a rare phenomenon which is also responsible for its **Anoxic Water**.

### MEDITERRANEAN SEA

- The Mediterranean Sea is a sea connected to the Atlantic Ocean, surrounded by the Mediterranean Basin and almost completely enclosed by land on the north by Southern Europe and Anatolia, on the south by North Africa, and on the east by the Levant.
- The sea is sometimes considered a part of the Atlantic Ocean, although it is usually identified as a separate body of water.
- The countries with coastlines on the Mediterranean Sea are:

**1. Albania**

**12. Lebanon**

**2. Algeria**

**13. Libya**

**3. Bosnia and Herzegovina**

**14. Malta**

**4. Croatia**

**15. Morocco**

**5. Cyprus**

**16. Monaco**

**6. Egypt**

**17. Montenegro**

**7. France**

**18. Slovenia**

**8. Greece**

**19. Spain**

**9. Israel**

**20. Syria**

**10. Italy**

**21. Tunisia**

**11. Turkey**



- In addition, the Gaza Strip (“Palestine” has been associated with the geographical area that currently covers the State of Israel, the West Bank and the Gaza Strip) and the British Overseas Territories of Gibraltar and Akrotiri and Dhekelia have coastlines on the sea.

### **CASPIAN SEA**

- The Caspian Sea is the largest enclosed inland body of water on Earth by area, variously classed as the world’s largest lake or a full-fledged sea.
- It is in an endorheic basin (a basin without outflows) located between Europe and Asia.
- Countries bordering Caspian Sea:
  1. **North east: Kazakhstan**
  2. **South east: Turkmenistan**
  3. **South: Iran**
  4. **West: Azerbaijan**
  5. **North west: Russia**



**PREVIOUS YEAR QUESTIONS**

1) Consider the following pairs: (CSP:2020)

River Flows into:

1. Mekong -- Andaman Sea
2. Thames -- Irish Sea
3. Volga -- Caspian Sea
4. Zambezi -- Indian Ocean

Which of the pairs given above is/are correctly matched?

- (a) 1 and 2 only (b) 3 only (c) 3 and 4 only (d) 1, 2 and 4 only

**Ans: c**

2) Consider the following pairs. (CSP:2018)

Regions sometimes mentioned in the news	Country
Catalonia	Spain
Crimea	Hungary
Mindanao	Philippines
Oromia	Nigeria

Which of the pairs given above are correctly matched?



(a) 1, 2 and 3 (b) 3 and 4 only (c) 1 and 3 only (d) 2 and 4 only

**Ans:c**

3) Consider the following pairs: (CSP: 2019)

	<b>Sea</b>	<b>Bordering country</b>
1	Adriatic Sea	Albania
2	Black Sea	Croatia
3	Caspian Sea	Kazakhstan
4	Mediterranean Sea	Morocco
5	Red Sea	Syria

Which of the pairs given above are correctly matched?

(a) 1, 2 and 4 only (b) 1, 3 and 4 only

(c) 2 and 5 only (d) 1, 2, 3, 4 and 5

**Ans:b**

4) Which of the following has/ have shrunk immensely/dried up in the recent past due to human activities? (CSP:2018)

1. Aral Sea
2. Black Sea
3. Lake Baikal

Select the correct answer using the code given below:

(a) 1 only (b) 2 and 3 (c) 2 only (d) 1 and

**Ans:a**

5) Very recently, in which of the following countries have lakhs of people either Suffered from severe famine / acute malnutrition or died due to starvation caused by war / ethnic conflicts

- (a)Angola and Zambia
- (b)Morocco and Tunisia
- (c)Venezuela and Colombia
- (d)Yemen and South Sudan

**And:d**

6)Consider the following pairs:

	<b>Towns sometimes mentioned in news</b>	<b>Country</b>
1	Aleppo	Syria
2	Kirkuk	Yemen
3	Mosul	Palestine
4	Mozar-i-sharif	Afghanistan

Which of the pairs given above are correctly matched?

- (a) 1 and 2 (b) 1 and 4 (c) 2 and 3 (d) 3 and 4

**Ans: b**

7) Mediterranean Sea is a border of which of the following countries?

(CSP: 2017)

1. Jordan 2. Iraq 3. Lebanon 4. Syria

Select the correct answer using the code given below:

(a) 1, 2 and 3 only (b) 2 and 3 only (c) 3 and 4 only (d) 1, 3 and 4 only

**Ans:c**

8) Which one of the following countries of South-West Asia does not open out to TheMediterranean Sea? (CSP: 2015)

(a) Syria (b) Jordan (c) Lebanon (d) Israel

**Ans: b**

9) Turkey is located between (CSP:2014)

(a)Black Sea and Caspian Sea

(b)Black Sea and Mediterranean Sea

(c)Gulf of Suez and Mediterranean Sea

(d)Gulf of Aqaba and Dead Sea

**Ans:b**

## **INDIAN ECONOMY**

### **3. INPUT TAX CREDIT**

IN NEWS: New norms regarding Input Tax Credit (ITC) blocking by GST field officers were introduced by the Central Board of Indirect Taxes and Customs (CBIC).

## **ABOUT INPUT TAX CREDIT**

- It is the tax which an entity pays on a purchase and the credit of this can be used to reduce liability on sales.
- At the time of paying tax on output one can reduce the tax that has already been paid on inputs .
- Rule 36(4) of the Central GST,2017 provides that the input tax credits can be availed only when a supplier of goods updates and uploads online the details of supplies through each of the bills.
- ITC cannot be available for purchase of personal consumption and business under **composition scheme**.

**COMPOSITION SCHEME:** It is a simple and easy scheme under GST for taxpayers. Small taxpayers can get rid of tedious GST formalities and pay GST at a fixed rate of turnover. This scheme can be opted by any taxpayer whose turnover is less than Rs. 1.5 crore.

- ❖ The following people cannot opt for the scheme-
  - Manufacturer of ice cream, pan masala, or tobacco
  - A person making inter-state supplies
  - A casual taxable person or a non-resident taxable person
  - Businesses which supply goods through an e-commerce operator

## **SCIENCE AND TECHNOLOGY**

### **4. NASA s DART MISSION**

IN NEWS: NASA's launches Double Asteroid Redirection Test (DART) on november 24,2021.

### **ABOUT DART**

- DART is NASA's **First planetary defence test mission**.

- **It is used to deflect asteroid Didymos.**
- **The main aim of the mission is to test the newly developed technology that would allow a spacecraft to crash into an asteroid and change its course.**
- DART is a low-cost spacecraft which carries 10kg of xenon which will demonstrate the agency's new thrusters called **NASA Evolutionary Xenon Thruster–Commercial (NEXT-C) in space.**
- The spacecraft carries **Didymos Reconnaissance and Asteroid Camera for Optical Navigation (DRACO)**, a high resolution imager which will help study impact sites and Didymos surface with real time images.
- DART will also carry a small satellite or CubeSat named **LICIACube (Light Italian CubeSat for Imaging of Asteroids)**. LICIACube is expected to capture images of the impact and the impact crater formed as a result of the collision. It can also capture images of any dust cloud formed during the impact.

### **NEAR EARTH OBJECTS (NEO)**

NASA defines NEOs as comets and asteroids nudged by the gravitational attraction of nearby planets into orbits that allow them to enter the Earth's neighbourhood.

These objects are **composed mostly of water ice with embedded dust particles.**

### **ASTEROID**

Asteroids are rocky objects that orbit the Sun, much smaller than planets. They are also called minor planets. As per NASA, 994,383 is the count for known asteroids, the remnants from the formation of the solar system over 4.6 billion years ago.

### **TYPES OF ASTEROIDS**



- **Trojans**, which are **asteroids that share an orbit with a larger planet**.
- **Near-Earth Asteroids (NEA)**, which have orbits that pass close to the Earth. Those that cross the Earth's orbit are called **Earth-crossers**.

#### **POTENTIALLY HAZARDOUS ASTEROIDS**

- **According to NASA, "Potentially Hazardous Asteroids (PHAs) are currently defined based on parameters that measure the asteroid's potential to make threatening close approaches to the Earth".**

#### **PREVIOUS UPSC QUESTION**

**"The experiment will employ a trio of spacecraft flying in formation in the shape of an equilateral triangle that has sides one million kilometres long, with lasers shining between the craft." The experiment in question refers to \_\_\_\_\_ to \_\_\_\_\_**

**2020**

- (a) Voyager-2**
- (b) New Horizons**
- (c) LISAPathfinder**
- (d) Evolved LISA**

**Ans: d**

## ENVIRONMENT

### **5. PAKKE TIGER RESERVE**

- Pakke Tiger Reserve is also known as **Pakhui Tiger Reserve**.
- This Tiger Reserve has won **India Biodiversity Award 2016** in the category of '**Conservation of threatened species**' for its **Hornbill Nest Adoption Programme**.
- It is bounded by Bhareli or Kameng River in the west and north, and by Pakke River in the east.
- Neighbours: Papum Reserve Forest in Arunachal Pradesh, Assam's Nameri National Park, Doimara Reserve Forest and Eaglenest Wildlife Sanctuary.
- The main perennial streams in the area are the Nameri, Khari and Upper Dikorai. West of Kameng River is Sessa Orchid Sanctuary.
- It falls within the Eastern Himalaya Biodiversity Hotspot.

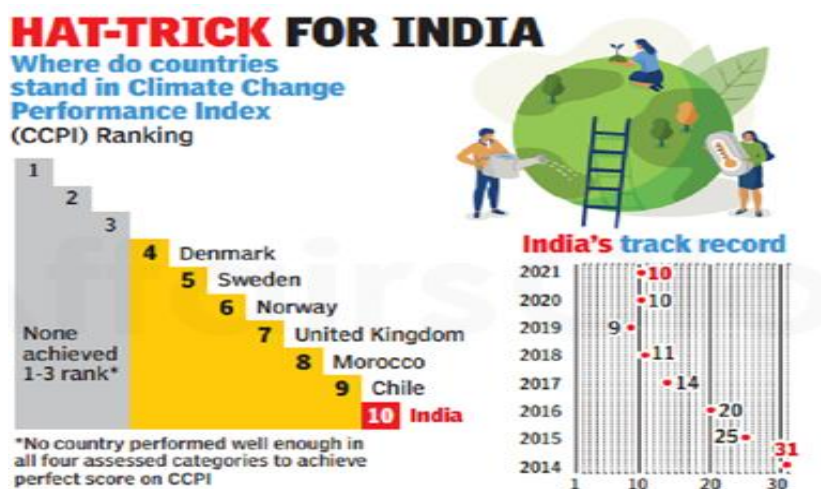
### **6. CLIMATE CHANGE PERFORMANCE INDEX(CCPI)**

IN NEWS: 17th edition of CCPI was released.

#### **ABOUT**

- It is compiled by **Germanwatch, the New Climate Institute, and the Climate Action Network**.
- It monitors climate mitigation progress of 60 countries and the European Union.
- It aims to enhance transparency in international climate politics and enables the comparability of climate protection efforts and progress made by individual countries.
- CCPI assesses countries' performance in 4 categories - GHG Emission(40%),Renewable Energy(20%),Energy Use(20%),Climate Policy(20%).

## PERFORMANCE



**INDIA'S PERFORMANCE:** In the overall rankings, India is at number 10 with a score of 69.22. It is a high performer except in the renewable energy category, in which it is ranked “medium”.

The report says that India is benefiting from its relatively low per-capita emissions.

## INTERNATIONAL RELATIONS

### 7. ISTANBUL CONVENTION

**IN NEWS:** Turkey which was the first signatory to the convention withdrew from the convention.

#### ABOUT ISTANBUL CONVENTION

- It is also called as the Council of Europe Convention on preventing and combating violence against women and domestic violence.
- It was adopted by the Council Of Europe in 2011.
- The treaty is considered as Worlds first binding treaty or instrument to Prevent and tackle violence against women.

- It is **the most comprehensive legal framework that exists to tackle violence against women and girls, covering** domestic violence, rape, sexual assault, female genital mutilation (FGM), so-called honour-based violence, and forced marriage.
- The Convention sets minimum standards for governments to meet when tackling violence against women.

## MISCELLANEOUS

### 8. OPERATION SAHAYATA

- Operation Sahayata is a humanitarian assistance and disaster relief for the Cyclone Idai hit Mozambique on March 2019.
- India Navy was the first responder in the evolving humanitarian crises in the aftermath of Cyclone IDAI that hit Mozambique and Government of India diverted 3 Indian naval ships (INS Sujata, ICGS Sarathi and INS Shardul) for humanitarian assistance.

### PRACTICE QUESTIONS

1. Climate Change Performance Index is released by
  - a. International Union for Conservation of Nature and Natural resource
  - b. German Watch
  - c. International Meteorological Organisation
  - d. UNFCCC
2. Which among the following Tiger Reserves is not an elephant reserve.
  - a. Periyar
  - b. Kaziranga
  - c. Pakke
  - d. Anamalai
3. Consider the following statements

1) Composition scheme under GST, the taxpayer needs to file a return on quarterly basis.

2) Any taxpayer whose turnover less than 1 crore can avail benefit under composition scheme.

Which of the statements given above is/are correct

- a) 1 only                      b) 2 only  
c) both 1 and 2              c) neither 1 nor 2

Answers: 1.b; 2.c; 3.a



**Civils Cafe**  
IAS Study Circle

Have fun. Achieve dreams.

Copyright © by Civils Cafe IAS Study Circle. All rights are reserved. No part of this document may be reproduced, stored in a retrieval system or transmitted in any form or by any means, electronic, mechanical, photocopying, recording or otherwise, without prior permission of Civils Café IAS Study Circle.

© Civils Cafe IAS Study Circle.