

www.bluetonltd.com

Telephone: +44 (0)1324 829661
Fax: +44 (0)1324 829551
Email: info@bluetonltd.com

19c Winchester Avenue
Winchester Avenue Industrial Estate
Denny, Stirlingshire
Scotland, UK
FK6 6QE

Phone: +1 347 879 4869
Fax: + 917 947 8360
Email: info@newtonbrownusa.com

Newton Brown Urban Design
HEAD OFFICES
690 East 26th. Brooklyn, NY 11210
Postal Mail:
315 Flatbush Avenue #526
Brooklyn, NY 11217

For our full range of products and materials
- corten steel, mild steel, ductile steel, cast iron, cast aluminium,
timber and cast stone visit www.bluetonltd.com

All product dimensions contained within this catalog are approximate.

blueton

blueton

2014

contents

- 04 litter & recycling receptacles
- 12 benches
- 24 security bollards
- 32 bicycle stand & barriers
- 38 railings
- 40 signage
- 42 planters
- 44 tree protection

blueton

We can manufacture all featured products to client design and specification.
For more information visit www.bluetonltd.com

ref 294ss

introduction

Using the influences of Scottish technical and engineering excellence throughout the decades, Blueton's business philosophy is to excel in innovative design and manufacture of all types of Street Furniture, ranging from standard to bespoke cutting edge designs. All our products are manufactured from the highest quality and durable materials, which are sourced locally and using recycled materials, wherever possible.

Employing a wealth of experience, combined with many years of working alongside designers, consultants, architects and local authorities, has enabled Blueton to build on our outstanding reputation for products of quality and excellence, creating confidence in our industry. All our processes are carried out in a timely and professional manner and our staff are dedicated and committed to supplying to the highest standard ensuring we meet our customers' needs.

Blueton's investment in staff, products and infrastructure ensures that we are able to provide a secure business platform for the future. Our commitment to our personnel, design of product and our care for our environment are paramount to our business.

Stainless Steel

All Blueton's stainless steel products are manufactured from grade 316 recycled satin polished material as standard, other options are available.

This is just a small selection of our range and materials, for more information go to www.bluetonltd.com

All product dimensions contained within this catalog are approximate.

FSC Timber

All Blueton's street furniture collection is FSC certified as standard, with the option of reclaimed hardwood. Our bike shelters and canopies can be manufactured from FSC hardwood upon request.

We are now proud to offer FSC Accoya timber slats as an option.

FSC symbolises the independent group 'Forest Stewardship Council' which continues to develop highly effective controls for the extraction of tropical hardwoods within a responsible renewal program.



ref 715ss



ref 088ss

litter & recycling receptacles

blueton

We can manufacture all featured products to client design and specification.
For more information visit www.bluetonltd.com



ref 041.01ss

litter & recycling ref 041.01ss

Dimensions

- 900 x 400 x 1000mm o/a
(35" x 16" x 39" o/a)

Materials Available

- Grade 316 stainless steel

Finish

- Satin finish

Supplied With

- Galvanized steel liner
- Surface mounting fixings
- Rain shield

Options

- Grade 304 stainless steel
- Ashtray (as pictured)
- Litter logo
- Perforations
- Attached ashtray / gum bin / stubbing out plate
- Logo or crest
- Clear powder coating

litter & recycling ref 041ss

Dimensions

- 500mm dia x 1100mm high
(20" dia x 43" high)

Materials Available

- Grade 316 stainless steel

Finish

- Satin finish

Supplied With

- Galvanized steel liners
- Surface mounting baseplate
- Anti vandal hinge mechanism
- Slam lock

Options

- Grade 304 stainless steel
- Perforations
- Bait box facility
- Powder coating
- Ashtray / gum bin / stubbing out plate
- Anti graffiti coating
- Logo or crest
- Gold highlighting vinyl bands
- Stainless steel root for submerged fixing



ref 041ss



litter & recycling ref 035ss

Dimensions

- 325mm dia x 850mm high
(13" dia x 34" high)

Materials Available

- Grade 316 stainless steel

Finish

- Satin finish

Supplied With

- Galvanized steel liner
- Stainless steel root for submerged fixing
- Anti vandal tilt hinge mechanism (for ease of emptying)
- Pushpin lock

Options

- Grade 304 stainless steel
- Rain hood
- Anti graffiti coating
- Logo or crest
- Ashtray / gum bin / stubbing out plate
- Surface mounting baseplate

litter & recycling ref 035.02ss

Dimensions

- 350mm dia x 700mm high
(13" dia x 28" high)

Materials Available

- Grade 316 stainless steel

Finish

- Satin finish

Supplied With

- Galvanized steel liners (locking on open top bins)
- Slam locks (on side opening bins)
- Stainless steel root for submerged fixing

Options

- Grade 304 stainless steel
- Hinged lid
- Mirror finish
- Powder coating
- Electro plated finish
- Anti graffiti coating
- Logo or crest
- Surface mounting baseplate



ref 035.02ss



ref 035ss with ashtray



ref 034ss

litter & recycling ref 034ss

Dimensions

- 375mm dia x 600mm high
(15" dia x 24" high)

Materials Available

- Grade 316 stainless steel

Finish

- Satin finish

Supplied With

- Galvanized steel liner
- Stainless steel root for submerged fixing
- Anti vandal hinged lid
- Turnbuckle lock

Options

- Grade 304 stainless steel
- Surface mounting baseplate
- Powder coating
- Electro plated finish
- Anti graffiti coating
- Logo or crest
- Ashtray / gum bin / stubbing out plate



ref 032ss

litter & recycling ref 032ss

Dimensions

- 450/500/600mm dia x 800mm high
(18/20/24" dia x 32" high)

Materials Available

- Grade 316 stainless steel

Finish

- Satin finish

Supplied With

- Galvanized steel liners
(locking on open top bins)
- Surface mounting baseplate
- Push pin lock

Options

- Grade 304 stainless steel
- Hinged lid
- Mirror finish
- Powder coating
- Electro plated finish
- Anti graffiti coating
- Logo or crest
- Ashtray / gum bin / stubbing out plate
- Stainless steel root for submerged fixing

litter & recycling ref 034.01ss

Dimensions

- 500mm dia x 1150mm high
(20" dia x 45" high)

Materials Available

- Grade 316 stainless steel

Finish

- Satin finish

Supplied With

- Galvanized steel liner
- Stainless steel root for submerged fixing
- Anti vandal tilt hinge mechanism
(for ease of emptying)
- Slam lock

Options

- Grade 304 stainless steel
- Surface mounting baseplate
- Powder coating
- Electro plated finish
- Anti graffiti coating
- Logo or crest
- Ashtray / gum bin / stubbing out plate



ref 034.01ss

litter & recycling ref 042.03ss

Dimensions

- 500mm dia x 750mm high
(20" dia x 30" high)

Materials Available

- Grade 316 stainless steel

Finish

- Satin finish

Supplied With

- Galvanized steel liner
- Surface mounting baseplate
- Anti vandal hinge lid
- Push pin lock
- Slotted body panel

Options

- Grade 304 stainless steel
- Solid body panel
- Ashtray
- Mirror finish
- Powder coating (any RAL color)
- Logo or crest
- Stainless steel root for submerged fixing
- Round version available



ref 042.03ss



ref 045ss

litter & recycling ref 045ss

Dimensions

- 305mm sq x 1000mm high
(12" sq x 39" high)

Materials Available

- Grade 316 stainless steel

Finish

- Satin finish chute with powder coated body & post

Supplied With

- Galvanized steel liner
- Surface mounting baseplate
- Anti vandal hinge mechanism
- Turnbuckle lock

Options

- Grade 304 stainless steel
- Anti graffiti coating
- Logo or crest
- Stainless steel root for submerged fixing

litter & recycling ref 048ss ash bin

Dimensions

- 200mm x 150mm x 980mm high
(8" x 6" x 39" high)

Materials Available

- Grade 316 stainless steel

Finish

- Satin finish

Supplied With

- Galvanized steel liner
- Surface mounting baseplate
- Anti vandal hinge mechanism
- Turnbuckle lock
- Front opening door

Options

- Grade 304 stainless steel
- Bead blasted finish
- Powder coating
- Anti graffiti coating
- Logo or crest
- Stainless steel root for submerged fixing



ref 048ss



ref 049ss

litter & recycling ref 049ss ash bin bollard

Dimensions

- 114mm dia x 1000mm high
above ground
(4" dia x 39" high above ground)

Materials Available

- Grade 316 stainless steel

Finish

- Satin finish

Supplied With

- Stainless steel liner
- Surface mounting baseplate
- Anti vandal hinge mechanism
- Push pin lock
- Lift out lid

Options

- Grade 304 stainless steel
- Bead blasted finish
- Powder coating
- Anti graffiti coating
- Logo or crest
- Stainless steel root for submerged fixing

benches



blueton

We can manufacture all featured products to client design and specification.
For more information visit www.bluetonltd.com

ref 073ss circular

benches ref 073ss seat

Dimensions

- 510mm wide x 850mm high x 1800mm long
(20" wide x 34" high x 71" long)

Materials Available

- Grade 316 stainless steel

Supplied With

- Stainless steel root for submerged fixing
- Anti skateboard measures

Options

- Grade 304 stainless steel
- Surface mounted base plates
- Armrests
- Powder coating (any RAL color)
- Curved to a radius
- Anti graffiti coating
- Logo or crest
- Mirror finish
- Electro plated finish
- Hardwood slats



ref 073ss



ref 073ss curved

benches ref 073ss circular seat

Dimensions

- 600mm, 1200mm or 1800mm i/dia
x 850mm high
(24", 47" or 71" i/dia x 34" high)
- Other sizes available on request

Materials Available

- Grade 316 stainless steel

Finish

- Satin finish

Supplied With

- Extended root for submerged fixing
- Anti skateboard measures

Options

- Grade 304 stainless steel
- Surface mounted base plates
- Armrests
- Curved to a custom radius



ref 074ss

benches ref 074ss bench

Dimensions

- 570mm wide x 450mm high x 1800mm long (22" wide x 18" high x 71" long)

Materials Available

- Grade 316 stainless steel

Finish

- Satin finish

Supplied With

- Stainless steel root for submerged fixing
- Anti skateboard measures

Options

- Grade 304 stainless steel
- Surface mounted base plates
- Armrests
- Curved to a radius
- Anti graffiti coating
- Logo or crest
- Electro plated finish
- Hardwood slats



ref 074ss curved

benches ref 074ss curved bench

Dimensions

- 1800mm or 2240mm long x 450mm high curved to a inside radius of 900mm (71" or 88" long x 18" high curved to a inside radius of 36")
- Other sizes available on request

Materials Available

- Grade 316 stainless steel

Finish

- Satin finish

Supplied With

- Extended root for submerged fixing
- Anti skateboard measures

Options

- Grade 304 stainless steel
- Surface mounted base plates
- Armrests
- Curved to a custom radius



ref 074ss circular

benches ref 074ss circular bench

Dimensions

- 600mm, 1200mm or 1800mm i/dia x 450mm high (24", 47" or 71" i/dia x 18" high)
- Other sizes available on request

Materials Available

- Grade 316 stainless steel

Finish

- Satin finish

Supplied With

- Extended root for submerged fixing
- Anti skateboard measures

Options

- Grade 304 stainless steel
- Surface mounted base plates
- Armrests
- Curved to a custom radius



15



ref 076ss

benches ref 076ss seat

Dimensions

- 620mm wide x 840mm high x 1800mm long
(24" wide x 33" high x 71" long)

Materials Available

- Grade 316 stainless steel

Finish

- Satin finish

Supplied With

- Stainless steel root for submerged fixing
- Tubular slat

Options

- Grade 304 stainless steel
- Surface mounted base plates
- Armrests
- Powder coating (any RAL color)
- Curved to a radius
- Anti graffiti coating
- Logo or crest
- Anti skateboard measures
- Electro plated finish
- FSC hardwood, reclaimed or Accoya slats

benches ref 084ss bench

Dimensions

- 625mm wide x 500mm high x 2500mm long
(24" wide x 20" high x 98" long)

Materials Available

- Grade 316 stainless steel

Finish

- Satin finish

Supplied With

- Surface mounted base plates
- Mirror finish to underside for uplighting effect

Options

- Grade 304 stainless steel
- Stainless steel root for submerged fixing
- Armrests
- Anti graffiti coating
- Logo or crest
- Anti skateboard measures
- Mirror finish
- Electro plated finish



ref 084ss

benches ref 088ss seat

Dimensions

- 600mm wide x 800mm high x 1800mm long
(24" wide x 32" high x 71" long)

Materials Available

- Grade 316 stainless steel
- FSC hardwood slats

Finish

- Satin finish
- Stained or oiled slats

Supplied With

- Stainless steel root for submerged fixing
- Stainless steel fixings
- Armrests

Options

- Grade 304 stainless steel
- Surface mounted base plates
- Anti graffiti coating
- Logo or crest
- Anti skateboard measures
- Mirror finish
- Reclaimed hardwood slats
- Accoya slats



ref 088ss



17

benches ref 086ss seat

Dimensions

- 560mm wide x 860mm high x 1800mm or 2500mm long (22" wide x 34" high x 71" or 98" long)
- Other sizes available on request

Materials Available

- Grade 316 stainless steel
- FSC hardwood slats

Finish

- Satin finish
- Stained or oiled slats

Supplied With

- Surface mounted base plates
- Stainless steel fixings
- Backrest

Options

- Grade 304 stainless steel
- Extended steel root for submerged fixing
- Armrests
- FSC Accoya slats
- Recycled plastic slats
- Anti graffiti coating
- Logo or crest
- Anti skateboard measures
- Reclaimed slats



ref 086ss

benches ref 084.01ss bench

Dimensions

- 430mm wide x 450mm high x 1800mm long (22" wide x 18" high x 71" long)

Materials Available

- Grade 316 stainless steel
- FSC hardwood slats

Finish

- Satin finish
- Stained or oiled slats

Supplied With

- Surface mounted base plates
- All stainless steel fixings

Options

- Grade 304 stainless steel
- Extended root for submerged fixing
- Armrests / backrest
- FSC Accoya slats
- Reclaimed timber slats
- Recycled plastic slats
- Curved to a radius (see ref 086c)
- Anti graffiti coating
- Logo or crest
- Anti skateboard measures



ref 084.01ss

benches ref 086.02ss circular/curved bench

Dimensions

- 500mm wide x 450mm high x 1500mm outside radius (20" wide x 18" high x 59" outside radius)
- Other sizes available on request

Materials Available

- Grade 316 stainless steel
- FSC hardwood slats

Finish

- Satin finish
- Natural or oiled slats

Supplied With

- Surface mounted base plates
- Hidden stainless fixings

Options

- Grade 304 stainless steel
- Extended root for submerged fixing
- Black stain finish
- Armrests / backrest
- Reclaimed or FSC Accoya slats
- Recycled plastic slats
- Anti graffiti coating
- Logo or crest
- Anti skateboard measures



ref 086.02ss



benches ref 091.02ss seat

Dimensions

- 610mm wide x 860mm high x 1800mm long (24" wide x 34" high x 71" long)

Materials Available

- Grade 316 stainless steel

Finish

- Satin finish

Supplied With

- Surface mounted base plates
- Armrests

Options

- Grade 304 stainless steel
- Stainless steel root for submerged fixing
- Single seat version
- Anti graffiti coating
- Logo or crest
- Anti skateboard measures
- Mirror finish
- Electro plated finish
- FSC timber slats
- Single seat version (inset)



ref 096ss

benches ref 096ss

Dimensions

- 580mm wide x 800mm high x 2000mm long as standard (23" wide x 32" high x 79" long)
- Available in 600mm, 800mm or 1000mm (23", 32" or 40") sections to a required length

Materials Available

- Grade 316 stainless steel
- FSC hardwood slats

Finish

- Satin finish
- Stained or oiled slats

Supplied With

- Stainless steel root for submerged fixing
- Stainless steel fixings
- Anti skateboard measures
- Armrests

Options

- Grade 304 stainless steel
- Surface mounted base plates
- Anti graffiti coating
- Logo or crest
- Mirror finish
- Powder coated finish
- Electro plated finish
- Reclaimed hardwood slats
- Accoya slats

benches ref 096.01ss modular bench

Dimensions

- 480mm wide x 450mm high x 2000mm long as standard (19" wide x 18" high x 79" long)
- Available in 600mm, 800mm or 1000mm (23", 32" or 40") sections to a required length

Materials Available

- Grade 316 stainless steel
- FSC hardwood slats

Finish

- Satin finish
- Stained or oiled slats

Supplied With

- Stainless steel root for submerged fixing
- Stainless steel fixings
- Anti skateboard measures

Options

- Grade 304 stainless steel
- Surface mounted base plates
- Anti graffiti coating
- Logo or crest
- Armrests
- Mirror finish
- Powder coated finish
- Electro plated finish
- Reclaimed hardwood slats
- Accoya slats



ref 096.01ss



ref 0961ss

benches

ref 0961ss seat

Dimensions

- 580mm wide x 800mm high x 1800mm long (23" wide x 32" high x 71" long)
- Other sizes available on request

Materials Available

- Grade 316 stainless steel
- FSC hardwood slats

Finish

- Satin finish
- Stained or oiled slats

Supplied With

- Stainless steel root for submerged fixing
- Stainless steel fixings

Options

- Grade 304 stainless steel
- Surface mounted base plates
- Powder coated finish (as shown on the seat legs)
- Logo or crest
- Anti skateboard measures
- Mirror finish
- Electro plated finish
- Reclaimed hardwood slats
- Accoya slats



ref 097ss modular

benches

ref 097ss modular seat

Dimensions

- 600mm wide x 800mm high x 1900mm long as standard (24" wide x 31" high x 75" long)
- Available in 600mm (24") wide seat modules to suit your requirements

Materials Available

- Grade 316 stainless steel

Finish

- Satin finish

Supplied With

- Surface mounted base plates
- Perforated seat panels

Options

- Grade 304 stainless steel
- Also available in bench version
- Armrests
- Curved to a radius
- Flat table section
- FSC hardwood slats
- Stainless steel root for submerged fixing
- Logo or crest
- Anti skateboard measures
- Mirror finish
- Powder coated finish
- Electro plated finish

benches

ref 0961.01ss bench

Dimensions

- 680mm wide x 450mm high x 1800mm long (27" wide x 18" high x 71" long)

Materials Available

- Grade 316 stainless steel
- FSC hardwood slats

Finish

- Satin finish
- Stained or oiled slats

Supplied With

- Stainless steel root for submerged fixing
- Stainless steel fixings

Options

- Grade 304 stainless steel
- Surface mounted base plates
- Powder coating (as shown on the legs)
- Armrests
- Anti skateboard measures
- Reclaimed hardwood slats
- Recycled plastic slats



ref 0961.01ss

benches

ref 097ss plinth mounted seat

Dimensions

- 600mm wide x 800mm high x 1900mm long (24" wide x 31" high x 75" long single seat unit)
- Available sizes to suit your requirements

Materials Available

- Grade 316 stainless steel

Finish

- Satin finish

Supplied With

- Surface mounted hidden anti vandal fixings
- Powder coated stainless steel seating panels (shown)
- Armrests

Options

- Grade 304 stainless steel
- Also available in bench version
- Perforated seat panels
- FSC hardwood slats
- Anti skateboard measures



ref 097ss plinth mounted

security bollards

security bollards ref 252ss

Dimensions

- 76, 89, 101, 114, 129, 139, 150, 168, 193, 204, 219 & 254mm dia x 1300mm o/a
- (3", 3½", 4", 4½", 5", 5½", 6", 6½", 7½", 8", 8½", 10" dia x 51" o/a)
- Other sizes available on request

Materials Available

- Grade 316 stainless steel

Finish

- Satin polish

Supplied With

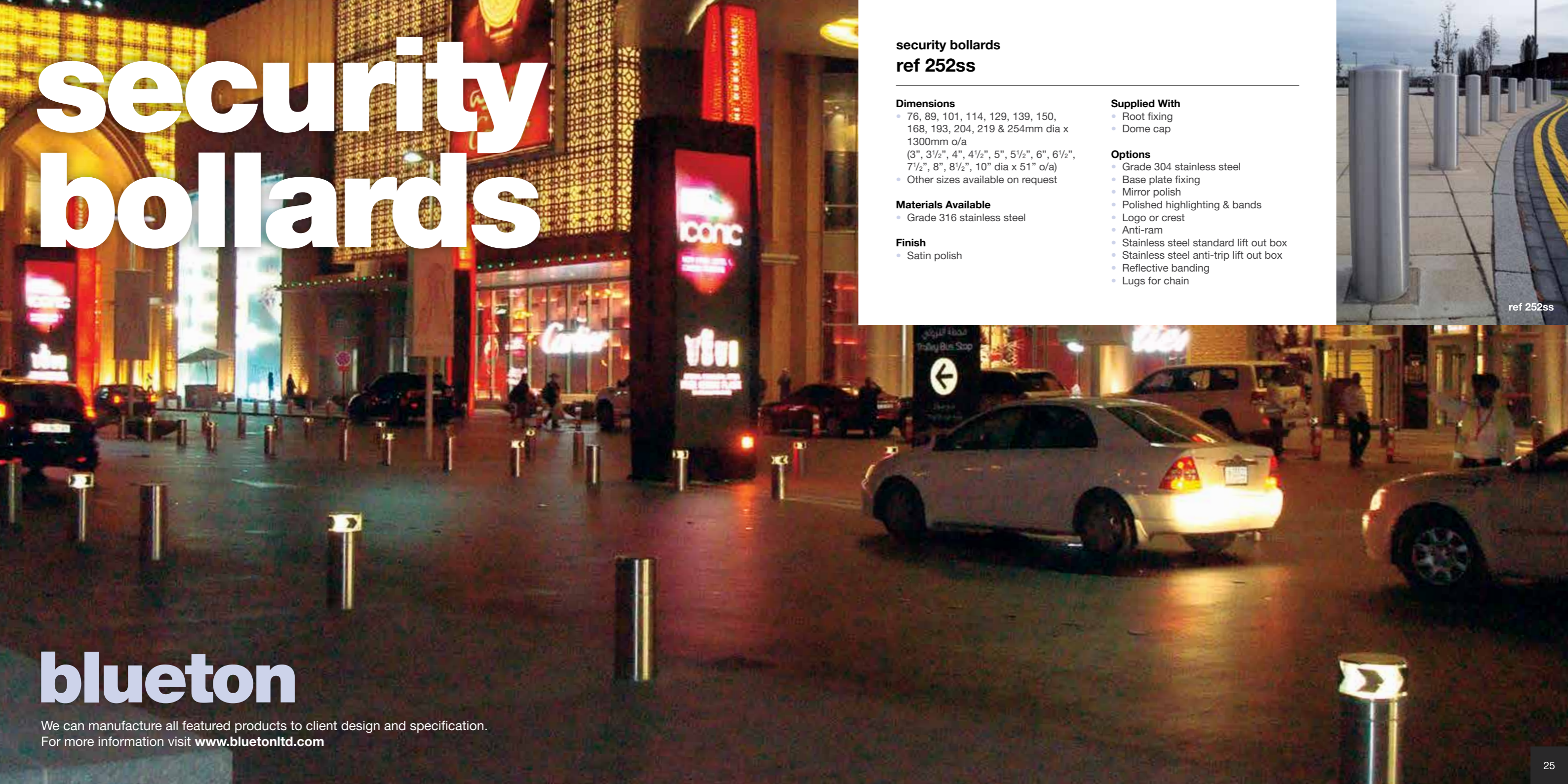
- Root fixing
- Dome cap

Options

- Grade 304 stainless steel
- Base plate fixing
- Mirror polish
- Polished highlighting & bands
- Logo or crest
- Anti-ram
- Stainless steel standard lift out box
- Stainless steel anti-trip lift out box
- Reflective banding
- Lugs for chain



ref 252ss



blueton

We can manufacture all featured products to client design and specification.
For more information visit www.bluetonltd.com



ref 254ss



ref 254ss

security bollards ref 254ss (PAS68 designed)

Dimensions

- 100mm, 150mm, 200mm & 323mm dia (PAS68 anti ram spec as above) x 991mm a/g (4", 6", 8" & 12 1/2" dia x 39" a/g)

Materials Available

- Grade 316 stainless steel

Finish

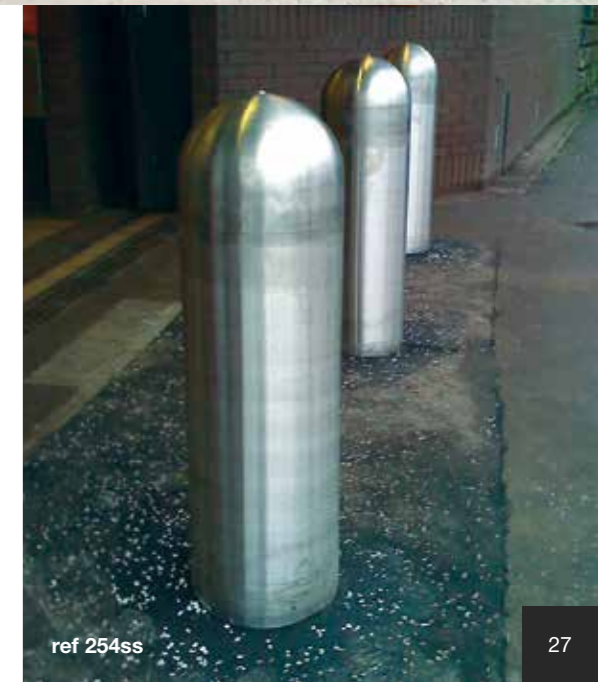
- Satin polish

Supplied With

- Root fixing
- Dome cap

Options

- Grade 304 stainless steel
- Polished highlighting
- Visibility banding
- Logo or crest
- Anti-ram
- Stainless steel anti-trip lift out box
- Reflective banding
- Lugs for chain



ref 254ss



ref 253ss

security bollards ref 253ss sidewalk protection

Dimensions

- 225mm dia x 300mm high c/w 300mm root (10" dia x 12" high c/w 12" root)

Materials Available

- Grade 316 stainless steel

Finish

- Bead blasted

Supplied With

- Root fixing

Options

- Grade 304 stainless steel
- Base plate fixing
- Mirror polish cap
- Logo or crest
- Anti-ram
- Stainless steel anti-trip lift out box
- Lugs for chain



ref 258ss

security bollards ref 258ss

Dimensions

- 70mm dia x 1300mm high o/a (2 3/4" dia x 51" high o/a)

Materials Available

- Grade 316 stainless steel

Finish

- Satin polish

Supplied With

- Root fixing

Options

- Grade 304 stainless steel
- Base plate fixing
- Mirror polish
- Polished highlighting & bands
- Logo or crest
- Stainless steel standard lift out box
- Stainless steel anti-trip lift out box
- Reflective banding
- Lugs for chain

security bollards ref 251ss

Dimensions

- 76, 89, 101, 114, 129, 139, 150, 168, 193, 204, 219, 254mm dia x 1300mm o/a (3", 3 1/2", 4", 4 1/2", 5", 5 1/2", 6", 6 1/2", 7 1/2", 8", 8 1/2", 10" dia x 51" o/a)
- Other sizes available on request

Materials Available

- Grade 316 stainless steel

Finish

- Satin polish

Supplied With

- Root or base fixing plate

Options

- Grade 304 stainless steel
- Mirror polish
- Powder coated (to any BS or RAL number)
- Polished highlighting & bands
- Logo or crest
- Anti-ram
- Stainless steel standard lift out box
- Stainless steel anti-trip lift out box
- Reflective banding
- Lugs for chain



ref 251ss

security bollards ref 261ss recessed

Dimensions

- 89mm, 101mm, 114mm, 139mm, 168mm & 204mm diameter x 1000mm high a/g
- Other heights available on request

Materials Available

- Grade 316 stainless steel

Finish

- Mirror polished top with bead blasted body

Supplied With

- 500mm (20") root fixing
- 10mm (4") wide recess

Options

- Grade 304 stainless steel
- Base plate fixing
- Satin finish
- Powder coated body
- Logo or crest
- Anti-ram
- Stainless steel standard lift out box
- Stainless steel anti-trip lift out box
- Lugs for chain



ref 261ss



security bollards ref 255ss

Dimensions

- 76, 89, 101, 114, 129, 139, 150, 168, 193, 204, 219, 254mm dia x 1300mm o/a
- (3", 3 1/2", 4", 4 1/2", 5", 5 1/2", 6", 6 1/2", 7 1/2", 8", 8 1/2", 10" dia x 51" o/a)
- Other sizes available on request

Materials Available

- Grade 316 stainless steel

Finish

- Satin polish

Supplied With

- Root or base fixing plate

Options

- Grade 304 stainless steel
- Polished highlighting & bands
- Logo or crest
- Anti-ram
- Stainless steel standard lift out box
- Stainless steel anti-trip lift out box
- Reflective banding
- Lugs for chain
- Baseplated
- Mirror finish

ref 255ss



security bollards ref 256ss

Dimensions

- 114mm dia x 1300mm high o/a
- (4 1/2" dia x 51" high o/a)
- Other sizes available on request

Materials Available

- Grade 316 stainless steel

Finish

- Satin polish

Supplied With

- Root fixing
- 2 recessed bands

Options

- Grade 304 stainless steel
- Base plate fixing
- Mirror polish
- Logo or crest
- Anti-ram
- Stainless steel standard lift out box
- Stainless steel anti-trip lift out box
- Reflective banding
- Lugs for chain



ref 256ss



ref 256ss

bicycle stands & barriers

blueton

We can manufacture all featured products to client design and specification.
For more information visit www.bluetonltd.com

bicycle stands & barriers ref 291ss

Dimensions

- 260mm wide x 950mm high
(10" wide x 37" high)

Materials Available

- Grade 316 stainless steel

Finish

- Satin finish

Supplied With

- 300mm (12") root for submerged fixing
- 2 bike capacity
- Cycle parking logo

Options

- Grade 304 stainless steel
- Surface mounted base plate
- Reflective banding
- Bead blasted finish
- Logo or crest

The cycle stand that's also a bollard



ref 291ss

bicycle stands & barriers ref 297.01ss

Dimensions

- 50mm dia x 800mm high x 800mm wide
(2" dia x 31" high x 31" wide)
- Various diameters available

Materials Available

- Grade 316 stainless steel

Finish

- Satin finish

Supplied With

- Surface mounted base plates
- 2 bike capacity

Options

- Grade 304 stainless steel
- Mirror finish
- 305mm (12") root for submerged fixing

ref 297.01ss



bicycle stands & barriers ref 296ss

Dimensions

- 50mm dia x 1050mm wide x 860mm high (2" dia x 41" wide x 34" high)

Materials Available

- Grade 316 stainless steel

Finish

- Satin finish

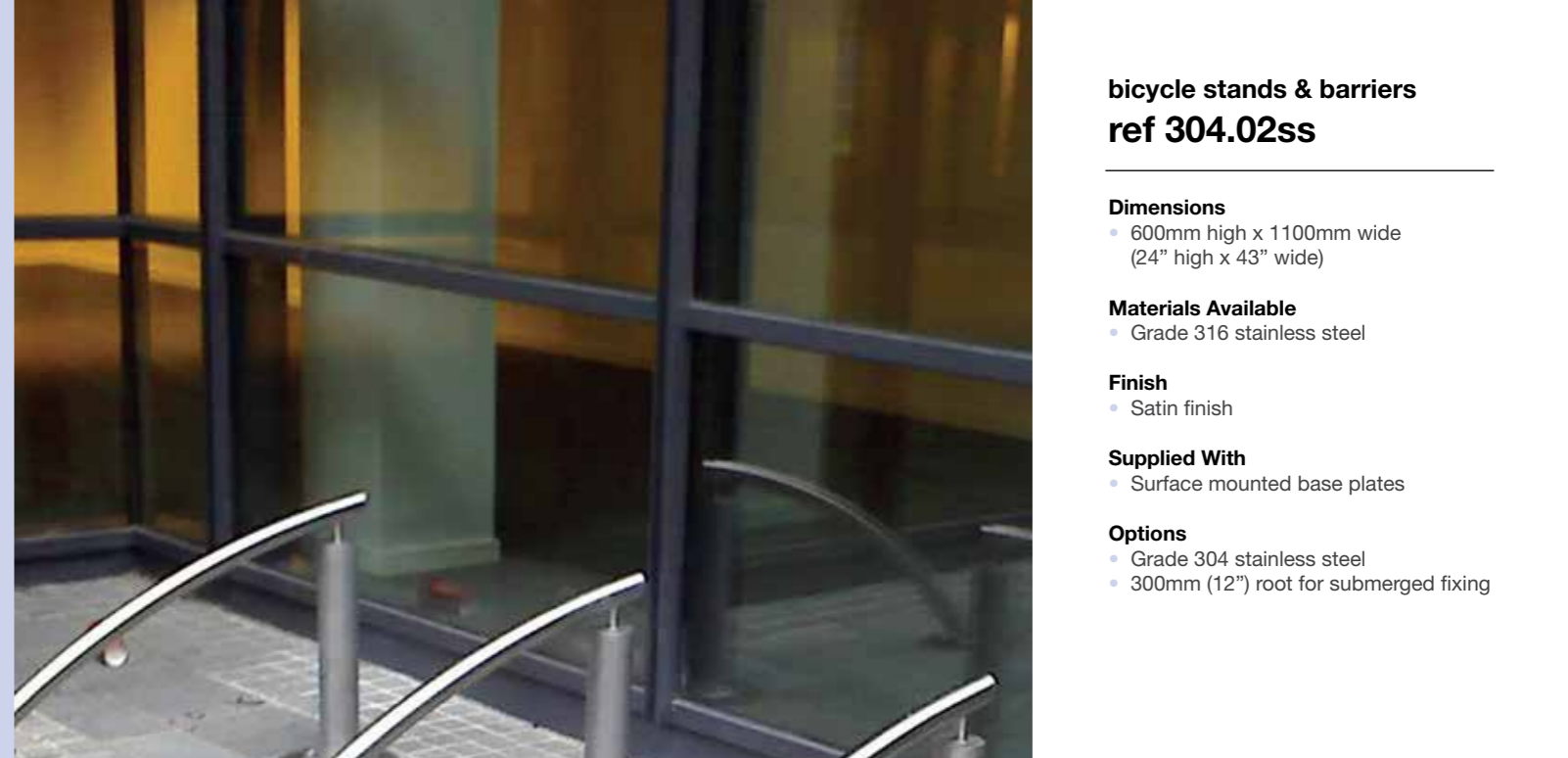
Supplied With

- 300mm (12") root for submerged fixing

Options

- Grade 304 stainless steel
- Surface mounted base plates
- Tapping bar
- Reflective banding
- Logo or crest

ref 296ss



bicycle stands & barriers ref 304.02ss

Dimensions

- 600mm high x 1100mm wide (24" high x 43" wide)

Materials Available

- Grade 316 stainless steel

Finish

- Satin finish

Supplied With

- Surface mounted base plates

Options

- Grade 304 stainless steel
- 300mm (12") root for submerged fixing

bicycle stands & barriers ref 294ss

Dimensions

- 50mm dia x 1000mm wide x 800mm high (2" dia x 39" wide x 31" high)

Materials Available

- Grade 316 stainless steel

Finish

- Satin finish

Supplied With

- 300mm (12") root for submerged fixing

Options

- Grade 304 stainless steel
- Surface mounted base plates
- Mirror finish
- Powder coating (any RAL color)
- Reflective banding
- Logo or crest



ref 294ss



ref 304.02ss



bicycle stands & barriers ref 4004ss

Dimensions

- 2100mm wide x 2450mm high x 4100mm long (83" wide x 96" high x 161" long) standard unit to suit 10 cycles
- Can be made to suit any quantity of cycles and BREEAM compliant

Materials Available

- Grade 316 stainless steel

Finish

- Satin finish

Supplied With

- Clear PETG glazed roof
- Surface mounted base plates
- Internal gutter system
- Anti tamper nuts & bolts

Options

- Grade 304 stainless steel
- Also available in mild steel
- Powder coated (to any RAL number)
- 500mm (20") extended root for submerged fixing (other depths available on request)
- Double sided version
- Colorcoat metal profile sheeting (other finishes available)
- Internal lighting
- Toughened glass roof

ref 4004ss

bicycle stands & barriers ref 4008ss

Dimensions

- 2550mm wide x 2250mm high x 4100mm long (100" wide x 89" high x 161" long) standard unit to suit 10 cycles

Materials Available

- Grade 316 stainless steel

Finish

- Satin finish

Supplied With

- Toughened glass glazing
- Powder coated aluminium glazing bead system
- Surface mounted base plates
- Anti tamper stainless steel nuts & bolts

Options

- Grade 304 stainless steel
- Clear PET UV Glazing
- Powder coated (to any RAL number)
- 500mm (20") extended root for submerged fixing (other depths available on request)
- Internal lighting



ref 4008ss

bicycle stands & barriers ref 4018.01ss

Dimensions

- 4000mm wide x 2200mm high x 2400mm long (158" wide x 87" high x 95" long) standard unit to suit 12 cycles
- Can be made to suit any quantity of cycles or BREEAM compliant

Materials Available

- Grade 316 stainless steel

Finish

- Satin finish

Supplied With

- Clear PETG Glazed roof
- Surface mounted base plates
- Anti tamper nuts & bolts
- Internal guttering

Options

- Grade 304 stainless steel
- Also available in mild steel
- Powder coated (to any RAL number)
- Colorcoat metal profile sheeting (other finishes available)
- 500mm (12") extended root for submerged fixing (other depths available on request)
- Internal mains or solar powered lighting



ref 4018.01ss

railings



railings ref 457ss

Dimensions

- 50mm dia frame x 1050mm high x 2000mm long
(2" dia frame x 42" high x 80" long)
- Other sizes available

Materials Available

- Grade 316 stainless steel

Finish

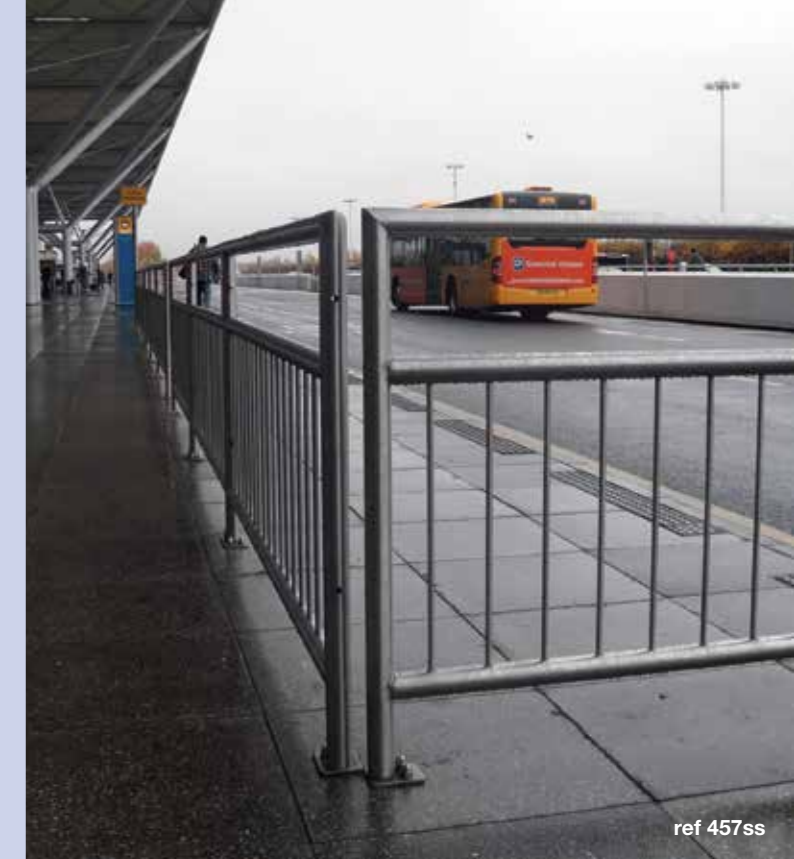
- Satin finish

Supplied With

- Nuts & bolts for connecting
- Root fixings

Options

- Grade 304 stainless steel
- Mirror polished
- Base plate fixing
- End & corner posts
- Radiused or raked panels & rails
- Logo or crest



ref 457ss



ref 461ss

railings ref 461ss

Dimensions

- 76mm dia x 1500mm o/a post
c/w 50mm dia framed panel x
1875mm long
(3" dia x 59" o/a post c/w 2" dia
framed panel x 74" long)
- Other sizes available

Materials Available

- Grade 316 stainless steel

Finish

- Satin finish

Supplied With

- Nuts & bolts for connecting
- Root fixings

Options

- Grade 304 stainless steel
- Reflective banding
- Base plate fixing
- End & corner posts
- Radiused or raked panels & rails
- Logo or crest

blueton

We can manufacture all featured products to client design and specification.
For more information visit www.bluetonltd.com

signage



signage ref 715ss

Dimensions

- 2200mm clearance height x 89mm dia
(87" clearance height x 3 1/2" dia)

Materials Available

- Grade 316 stainless steel

Finish

- Satin polish

Supplied With

- 500mm (20") root fixing
- F4 stainless steel recessed finial
- Grade 316 stainless steel finger signs

Options

- Grade 304 stainless steel
- Powder coated finish
- Lettering or logo or crest on base
- Gold or colored highlights
- Base plate fixing
- Cast finger signs

blueton

We can manufacture all featured products to client design and specification.
For more information visit www.bluetonltd.com

planters

blueton

We can manufacture all featured products to client design and specification.
For more information visit www.bluetonltd.com

planters ref 3202ss

Dimensions

- 1200mm sq or 1500mm sq x 900mm high (47" sq or 59" sq x 36" high)
- Other sizes available on request

Materials Available

- Grade 316 stainless steel

Finish

- Satin finish

Supplied With

- Lifting eyes
- Drainage holes

Options

- Grade 304 stainless steel
- Galvanised steel
- Galvanised steel liners or tray
- Powder coated finish (any RAL color)
- Cast on logo or crest
- Levelling feet
- Electrical socket box
- Lugs for bolting down



ref 3202ss

planters ref 3204ss

Dimensions

- 500, 750, 1000, 1500, 1800 or 2000mm square x 500, 750 or 1000mm high (20", 30", 40", 59", 71" or 79" square x 20", 30" or 40" high)
- Standard sizes - can form any combination

Materials Available

- Grade 316 stainless steel

Finish

- Satin finish

Supplied With

- Drainage holes

Options

- Grade 304 stainless steel
- Galvanised steel liners or tray
- Powder coated finish (any RAL color)
- Logo or crest
- Levelling feet
- Electrical socket box
- Watering aperture
- Lugs for bolting down

ref 3204ss

tree protection

blueton

We can manufacture all featured products to client design and specification.
For more information visit www.bluetonltd.com

tree protection ref 1022ss

Dimensions

- 1200mm dia with 500mm i/dia (47" dia with 20" i/dia)
- Other sizes available on request

Materials Available

- Grade 316 stainless steel

Finish

- Satin finish
- Mirror finish

Supplied With

- Locking lugs for anti vandal protection

Options

- Grade 304 stainless steel
- Powder coated (to any BS or RAL number)
- Anti lifting bar
- Cast logo or crest
- Aperture for uplighter or irrigation system



ref 1022ss

tree protection ref 1024ss

Dimensions

- 800, 900, 1000, 1200, 1400, 1500, 1800 & 2000mm square or round c/w 440mm dia or 500mm sq centre (32", 36", 39", 47", 55", 59", 71" & 79" square or round c/w 17" dia or 20" sq centre)

Materials Available

- Grade 316 stainless steel

Finish

- Satin finish

Supplied With

- Locking lugs for anti vandal protection

Options

- Grade 304 stainless steel
- Powder coated (to any BS or RAL number)
- Bead blasted finish
- Anti lifting bars
- Aperture for uplighter or irrigation system

ref 1024ss



tree protection ref 1041ss

Dimensions

- 800, 900, 1000, 1200, 1400, 1500, 1800 & 2000mm sq c/w 440mm dia or 500mm sq centre (32", 36", 39", 47", 55", 59", 71" & 79" sq c/w 17" dia or 20" sq centre)

Materials Available

- Grade 316 stainless steel

Finish

- Satin finish

Supplied With

- Locking lugs for anti vandal protection

Options

- Grade 304 stainless steel
- Powder coated (to any BS or RAL number)
- Bead blasted finish
- Mirror finish
- Anti lifting bars
- Aperture for uplighter or irrigation system



tree protection ref 1043ss

Dimensions

- 800, 1200, 1400, 1500, 1800 or 2000mm sq c/w, 440 or 600mm i/dia (32", 36", 39", 47", 55", 59", 71" & 79" sq c/w, 17" dia or 20" sq centre)
- 50mm (2") deep overall (including support frame)

Materials Available

- Grade 316 stainless steel

Finish

- Satin finish

Supplied With

- Anti vandal lugs
- Stainless steel support frame, light duty
- Anti tamper nuts & bolts

Options

- Grade 304 stainless steel
- Bead blasted finish
- Anti lifting bars
- Aperture for lighting or irrigation system

tree protection ref 8001ss recessed

Dimensions

- 991, 1194, 1397, 1499, 1803 & 2007mm sq c/w standard 432 or 508mm square centre to suit rows (39", 47", 55", 59", 71" & 79" sq c/w standard 17" or 20" square centre to suit rows) can be made to suit requirements
- Tray Depths - 76, 89, 102 & 127mm (3", 3 1/2", 4" & 5") as standard, can be made to suit requirements
- Tray Widths - to suit infill paving

Materials Available

- Grade 316 stainless steel

Finish

- Satin finish

Supplied With

- Locking lugs for anti vandal protection
- DDA compliant slots
- Slotted holes in frame for fixing
- 2 part lid
- Load class A15

Options

- Grade 304 stainless steel
- Aperture for uplighter or irrigation system
- Removable centre tray for trunk growth
- Concrete ties
- Load class B125, C250 or D400



ref 1043ss

ref 8001ss