

electric
open air fun!

PONEEZ.com 

PONEEZ New PowerEagle catalog 2022

SHARK



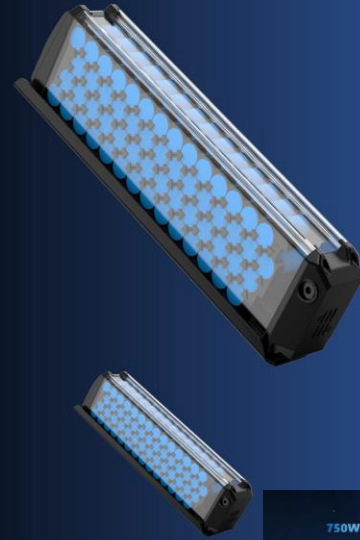
WHALE



PONEEZ.com 

48V20A LG/SAMSUNG LITHIUM BATTERY

- Core of an ebike-1st focus of upgrade
- top-level electric car-grade battery
- battery capacity 20Ah, the capacity can still reach 80% after 1000 charge cycles
- 15% higher than that of other batteries under the same capacity. 50% higher than most ebikes on the market



750W Motor

- Larger inner ring
- Better heat dissipation
- Longer motor life



Hydraulic brake

- Longer service life
- Easier maintenance
- More control
- Shorter braking distance (half of disc brake)



MOST EBIKE FRAME ON THE MARKET



OUR EBIKE FRAME

- Higher quality materials-solid-strength and durability
- Reserved fork opening distance-can upgrade from 4.0 tires to 4.8

SHARK & WHALE

\$2760 friends & family \$1950



Motor	Battery	Range
750W/500W	20Ah	60-80miles

Electric System

Battery	48V 20AH LG/Samsung
Motor	750W Rear hub/500W Bafang Mid-drive
Controller	48V 25A

Main Component

Tires	26" x 4" Kenda
Brake	180MM Hydraulic disc(Logen)
Suspension	Front suspension
Freewheel	Shimano 7/9
Throttle	Half twist throttle
Net Weight	36kg
Total Payload Capacity	150kg



TANK



PONEEZ.com 

TANK



PONEEZ.com 

CHEETAH



Softail Ebike

26" x 4.8" Fat Tires

Superiority-four Bar Linkage Suspension

Dual Suspension

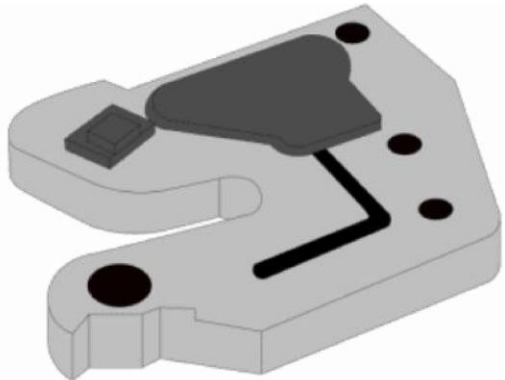
Torque Sensor

Superiority-four Bar Linkage Suspension

Keeps you in control and comfortable over rugged terrain as if you're floating over the road.



Torque-based Pedal Sensor



- Adjust power output in real time.
- Technically amplifying your every input.

26" x 4.8" Fat Tires

- Selecting the best tires to generate the desired grip
- Cobra's 26*4.8 tires
- Aggressive tread design
- Low rolling resistance
- Excellent float
- Boost fat bike's performance on trails



CHEETAH PLUS



CHEETAH VS CHEETAH PLUS

\$3420 friends & family \$2560

\$4860 friends & family \$3645

Configurations	Cheetah	Cheetah Plus
Hub Motor	750W Rear hub motor	1000W Bafang Mid drive motor
Controller	48V/25A	48V/30A
Tires	26" x 4.8" CST	26" x 4.5" Kenda
Brake	Hydraulic brake (Logen)	Hydraulic brake(Tektro)
Freewheel	Shimano 7 freewheel	Shimano 10 cassette



26" x 4.5" Kenda Tire

Thumb Throttle

1000W Bafang Mid Drive Motor

Tektro Hydraulic Brake

Softail Ebike

10 Speed Cassette Gear Shift System

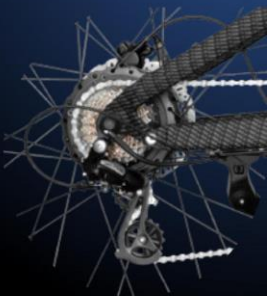
1000W Bafang Mid Drive Motor

- Lower center of gravity
- Balanced weight distribution
- Solid directional and tracking stability
- Natural ride feel
- Max power at low speed
- 10 speed gear shift system



10 Speed Cassette Gear Shift System

- Enjoy varying speeds
- More stability and flexibility over the all terrain.



AGILITY PLUS



AGILITY PLUS

\$2380 friends & family \$1780



Motor	Battery	Range
750W	14Ah	45+miles

Electric System

Battery	48V 14AH LG/Samsung
Motor	750W Bafang
Controller	48V 14A

Main Component

Tires	20" x 4" Kenda
Brake	Mechanical/ Hydraulic disc brakes
Suspension	Front suspension
Freewheel	Shimano 7
Throttle	Half twist throttle
Net Weight	92 lbs
Total Payload Capacity	330 lbs

Foldable

Cast Tire

Bafang 750W

Portable

Kenda Cast Tire

- Better torsional stiffness compared to spoked rims.
- More rigid in construction. Better handling abilities.
- Tubeless tires for higher speed and better retention of inflation.
- Highly resistant to chemicals and corrosion.



Built-in Battery

Built in battery for protection

PONEEZ.com

