



**Driver License**



**Max. Speed**



**Sidewalk Prohibited**



**Bike Lane**



**Ride with Traffic**



**Bike Helmet**

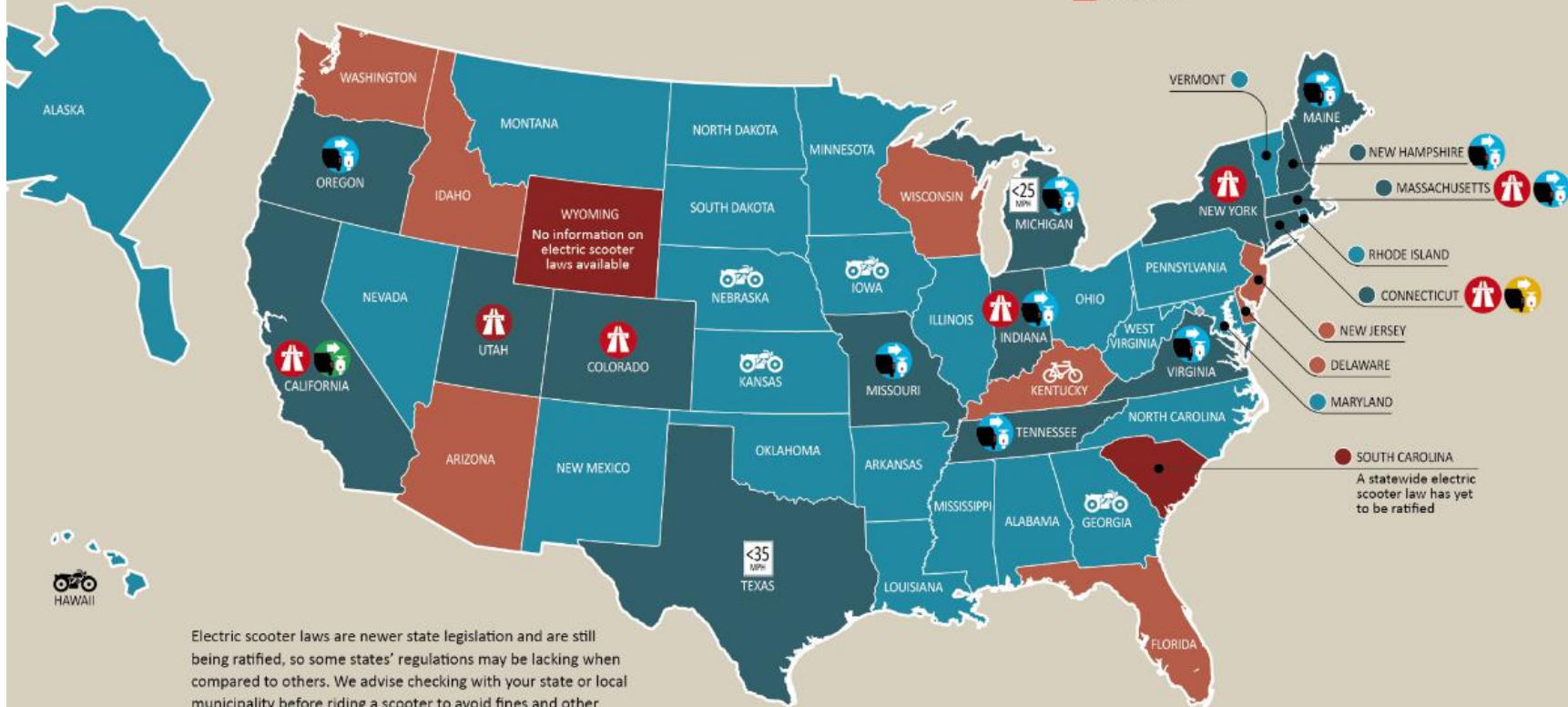
- You must have a valid driver's license or learners permit.
- You must wear a helmet.
- You cannot ride your electric scooter over 15 mph.
- You cannot ride the electric scooter on the sidewalk.
- You cannot ride on street with a speed limit over 25 mph, unless you ride in a bike lane.
- If you do ride in the street, you must stay on the right side and ride as close as you can to the curb, **with exceptions.**

# ELECTRIC SCOOTER LAWS BY STATE

Please check with your local government for the latest updates.

This publication is for general information and makes no claims of being current law.

<ul style="list-style-type: none"> <li>● YES</li> <li>● YES except...</li> <li>● NO</li> </ul>	<ul style="list-style-type: none"> <li> Except interstate or limited-access roads</li> <li> Except interstate or limited-access roads or roads with a speed limit greater than 25 mph</li> <li> If speed limit is less than 25 mph</li> <li> If speed limit is less than 35 mph</li> </ul>	<ul style="list-style-type: none"> <li> Must keep right</li> <li> Must keep right if the speed limit is greater than 25 mph</li> <li> Must keep right if max speed lower than posted speed limit</li> </ul>	<ul style="list-style-type: none"> <li> Bicycle paths</li> <li> Bicycle paths only</li> <li> Not bicycle paths</li> <li> Unless bicycles are permitted</li> </ul>	<ul style="list-style-type: none"> <li> Basic driver's license required</li> <li> No license required</li> <li> Any class of valid driver's license or permit required</li> <li> Driver's license with a motorcycle endorsement required</li> <li> Motorcycle license required</li> </ul>	<ul style="list-style-type: none"> <li> Displacement required</li> <li> Watts required</li> <li> Brake horse power required</li> </ul>	<ul style="list-style-type: none"> <li> Registration required</li> <li> Title required</li> <li> Insurance required</li> <li> Inspection required</li> <li> No registration required</li> <li> Cannot be registered</li> </ul>	<ul style="list-style-type: none"> <li> Helmet required</li> <li> Helmet required if younger than 16</li> <li> Helmet required if younger than 18</li> <li> Helmet not required</li> <li> Helmet not required if older than 21 and have had license for two years</li> </ul>	<ul style="list-style-type: none"> <li> Eye Protection Required</li> <li> Eye Protection Required if younger than 18</li> </ul>
--	--	---	---	---	--	--	--	---



Electric scooter laws are newer state legislation and are still being ratified, so some states' regulations may be lacking when compared to others. We advise checking with your state or local municipality before riding a scooter to avoid fines and other penalties, especially due to many states allowing individual counties and cities to set their own electric scooter regulations.