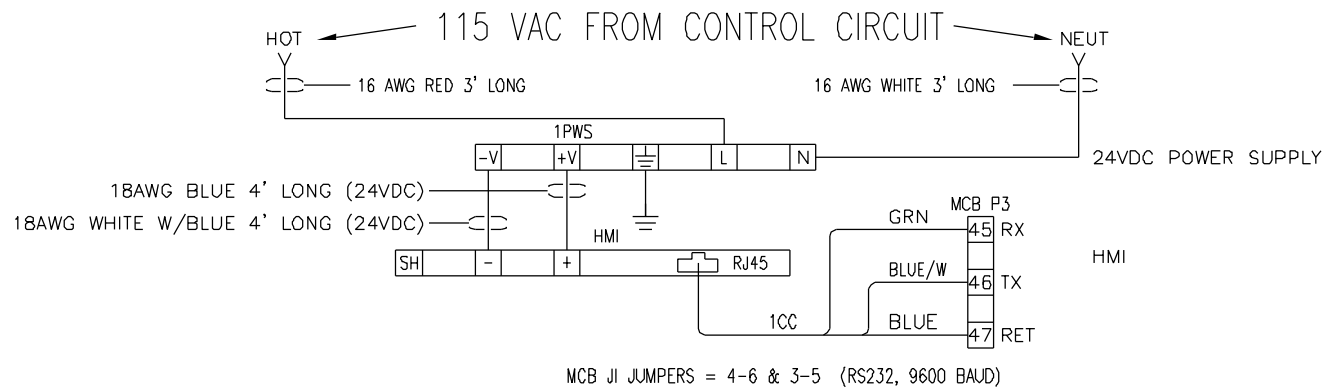


415029



DRYER PARTS LIST

HMI	1	414995	MAPLE SYSTEMS	OIT-3185A00	OPERATOR INTERFACE
1CC	1	414997	-	CAT5-E/RJ45	COMM. CABLE, 5' LG
1PWS	1	414996	AUTOMATION DIRECT	FA-24PS	24VDC POWER SUPPLY
1,2LT	2	415002	C3	W22U-12I-WLA	PILOT LIGHT, 12V, AMBER
3LT	1	415003	C3	W22U-12I-WLR	PILOT LIGHT, 12V, RED
1TAG	1	415009	R.O.N.	FS-278-1	PROCESS
2TAG	1	415010	R.O.N.	FS-278-1	REGEN
3TAG	1	415011	R.O.N.	FS-278-1	ALARM
SCREW	10	-	-	#8-32 X 3/4"	SCREW
NUT	10	-	-	#8-32	HEX NUT
WASHER	10	-	-	#8	FLAT WASHER
LOCK WASH	10	-	-	#8	LOCK WASHER
RAIL	1	-	TM	DIN RAIL 5" LONG	DIN RAIL
PAN	1	MP201003D	TM	MP201003D/RD/2	MOUNTING PANEL
TEMP	1	MP201003D	TM	MP201003D/RD/TEMP	TEMPLATE
PG	1	-	TM	PGXXXXXX	EPROM CHIP
IB	1	-	TM	IB201001	INSTRUCTION BOOK

LOADER PARTS LIST

HMI	1	414995	MAPLE SYSTEMS	OIT-3185A00	OPERATOR INTERFACE
1CC	1	414997	-	CAT5-E/RJ45	COMM. CABLE, 5' LG
1PWS	1	414996	AUTOMATION DIRECT	FA-24PS	24VDC POWER SUPPLY
SCREW	10	-	-	#8-32 X 3/4"	SCREW
NUT	10	-	-	#8-32	HEX NUT
WASHER	10	-	-	#8	FLAT WASHER
LOCK WASH	10	-	-	#8	LOCK WASHER
RAIL	1	-	TM	DIN RAIL 5" LONG	DIN RAIL
PAN	1	MP201003D	TM	MP201003D/RD/2	MOUNTING PANEL
TEMP	1	MP201003D	TM	MP201003D/RD/TEMP	TEMPLATE
PG	1	-	TM	PGXXXXXX	EPROM CHIP
IB	1	-	TM	IB201002	INSTRUCTION BOOK

DISCONNECT THE POWER.
 REMOVE THE OLD DISPLAY AND THE TOUCH PANEL.
 USING THE TEMPLATE, MARK THE HOLE IN THE DOOR THAT NEEDS TO BE REMOVED.
 CUT OUT THE HOLE WITH A SABER SAW.
 INSTALL THE MOUNTING PLATE WITH THE HMI AND LIGHTS.
 REWIRE THE LIGHTS PER THE EXISTING WIRING DIAGRAM.
 MOUNT THE DIN RAIL IN THE BOTTOM OF THE CONTROL ENCLOSURE.
 INSTALL THE POWER SUPPLY TO THE DIN RAIL. CONNECT THE 120VAC WIRES TO THE EXISTING TERMINAL BLOCK.
 CONNECT THE DC POWER TO THE HMI.
 CONNECT THE CABLE TO THE HMI.
 REPLACE THE EPROM. (THE # WILL VARY DEPENDING ON DRYER SIZE AND OPTIONS)
 CHANGE THE MCB JI JUMPERS TO 4-6 & 3-5.
 REFER TO 413731

DISCONNECT THE POWER.
 REMOVE THE OLD DISPLAY AND THE TOUCH PANEL.
 USING THE TEMPLATE, MARK THE HOLE IN THE DOOR THAT NEEDS TO BE REMOVED.
 CUT OUT THE HOLE WITH A SABER SAW.
 INSTALL THE MOUNTING PLATE WITH THE HMI AND LIGHTS.
 REWIRE THE LIGHTS PER THE EXISTING WIRING DIAGRAM.
 MOUNT THE DIN RAIL IN THE BOTTOM OF THE CONTROL ENCLOSURE.
 INSTALL THE POWER SUPPLY TO THE DIN RAIL. CONNECT THE 120VAC WIRES TO THE EXISTING TERMINAL BLOCK.
 CONNECT THE DC POWER TO THE HMI.
 CONNECT THE CABLE TO THE HMI.
 REPLACE THE EPROM. (THE PG # VARIES)
 CHANGE THE MCB JI JUMPERS TO 4-6 & 3-5.
 REFER TO 413731