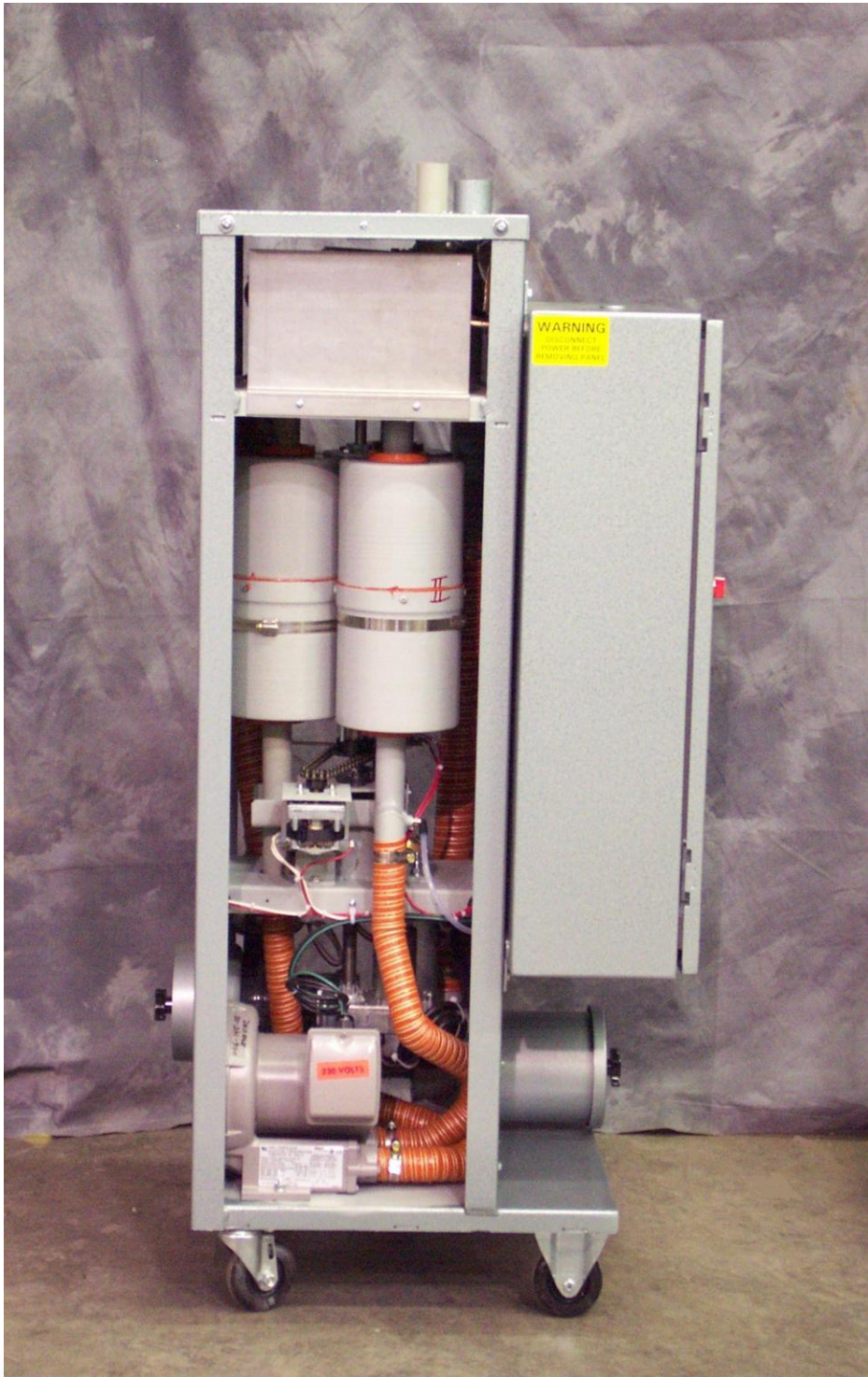


Instructions on changing the desiccant in your Thoreson Mccosh TD- 12 and TD-24 dryer



Removal of the desiccant beds from the Dryer

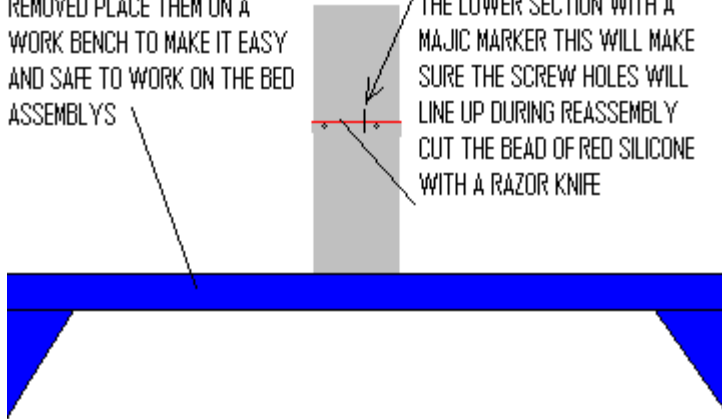
1. Remove the two side panels from the dryer
2. Index the desiccant beds by following the instructions below.

For Tech-2 and Tech-3 ONLY

- *BE SURE THE DRYER IS OFF AUTO ON SWITCH IS IN THE ON POSITION. ALSO YOU MUST SET THE KEY SWITCH IN THE ADJUST POSITION.*
- *THE DEW POINT SET POINT OPTION MUST BE IN THE OFF MODE. TO TURN OFF THE DEW POINT SET POINT (ON THE TECH-2 SERIES DRYER YOU MUST PRESS THE DEW POINT SET POINT BAR ON THE KEYPAD TWICE) THE DISPLAY WILL ASK DEW POINT SET POINT ON? PRESS NO. OR THE NUMBER 9 ON THE TOUCH PANEL. (ON THE TECH-3 DRYER YOU NEED ONLY PRESS THE OPTION SET POINT BAR ONCE TO GAIN ACCESS TO THE DEW POINT SHIFT MODE). THE CONTROLLER WILL ASK DEW POINT SET ON? PRESS THE NO OR #9 BUTTON ON THE KEYPAD. NOW YOU CAN SHIFT THE BEDS BY PRESSING THE AIRFLOW ALARM SET POINTS TWICE. THE DISPLAY BOARD WILL ASK SHIFT BEDS? (PRESS YES) NOW THE DESICCANT BEDS SHOULD START TO INDEX WHEN THE BEDS START TO ROTATE DISCONNECT THE MAIN HIGH VOLTAGE TO THE DRYER. NOW YOU CAN SLOWLY INDEX THE BEDS BY HAND COUNTER CLOCKWISE ONLY. ROTATE THE BEDS TILL YOU HAVE EASY ACCESS TO ONE OF THE BEDS REMOVE THE BAND CLAMP TO ALLOW FOR THE REMOVAL OF THE BED.*

AFTER THE BEDS HAVE BEEN REMOVED PLACE THEM ON A WORK BENCH TO MAKE IT EASY AND SAFE TO WORK ON THE BED ASSEMBLYS

MARK THE UPPER SECTION TO THE LOWER SECTION WITH A MAJIC MARKER THIS WILL MAKE SURE THE SCREW HOLES WILL LINE UP DURING REASSEMBLY CUT THE BEAD OF RED SILICONE WITH A RAZOR KNIFE



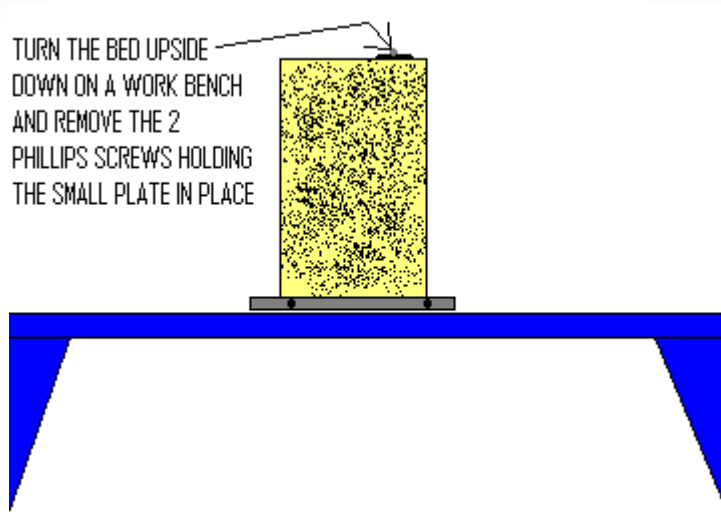
CUT THE SILICONE BEAD USING A RAZOR KNIFE

MARK THE UPPER AND LOWER SECTIONS OF THE BED SO YOU WILL REASSEMBLE THE SAME WAY THAT WAY THE SCREW HOLES WILL LINE UP

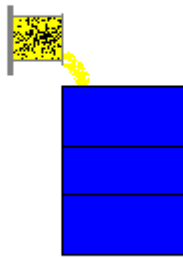


IF A LARGE VISE IS AVAILABLE IT WILL HELP IN THE SEPERATION OF THE DESICCANT BED AS WELL AS PLACING THE DESICCANT BED IN A VISE IF POSSIBLE USING A HAMMER AND CHISEL WILL HELP AS WELL





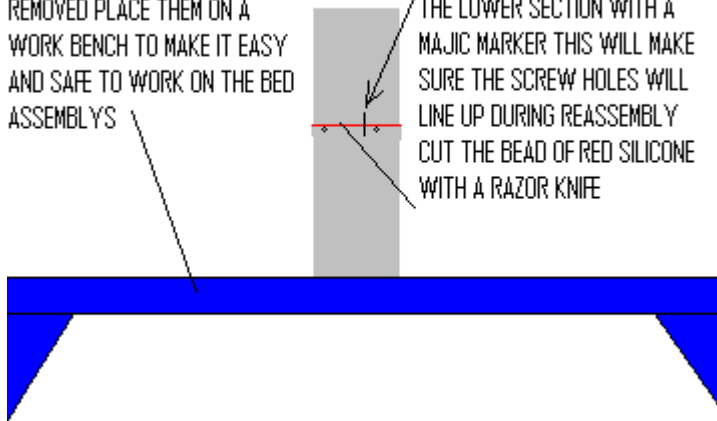
DISCARD OLD DESICCANT MATERIAL



RE-ASSEMBLE THE DESICCANT BEDS MAKING SURE THE MAGIC MARKER LINES ARE MATCHED UP FROM THE UPPER AND LOWER SECTIONS OF THE BED

AFTER THE BEDS HAVE BEEN
REMOVED PLACE THEM ON A
WORK BENCH TO MAKE IT EASY
AND SAFE TO WORK ON THE BED
ASSEMBLYS

MARK THE UPPER SECTION TO
THE LOWER SECTION WITH A
MAGIC MARKER THIS WILL MAKE
SURE THE SCREW HOLES WILL
LINE UP DURING REASSEMBLY
CUT THE BEAD OF RED SILICONE
WITH A RAZOR KNIFE



THIS SKETCH SHOWS
THE AIR FLOW
THROUGH THE BED
AFTER INSTALLATION
BACK INTO THE DRYER



AFTER RE-INSTALLING THE BEDS TURN THE DRYER BACK ON AND THE BEDS SHOULD ROTATE BACK INTO THE CORRECT POSITION AND THE BEDS SHOULD LINE UP WITH THE UPPER AND LOWER TUBE MANIFOLDS. IF THE BEDS DO NOT LINE UP YOU CAN MAKE SURE THE CHAIN IS NOT TOO LOOSE ON THE INDEX MOTOR. ALSO THERE IS AN ADJUSTMENT ON THE BED INDEX LIMIT SWITCH THAT IS LOCATED JUST BELOW THE DESICCANT BED CAROUSEL. THE OLDER THE DRYER THE MORE LIKELY THIS ADJUSTMENT WILL BE NEEDED.