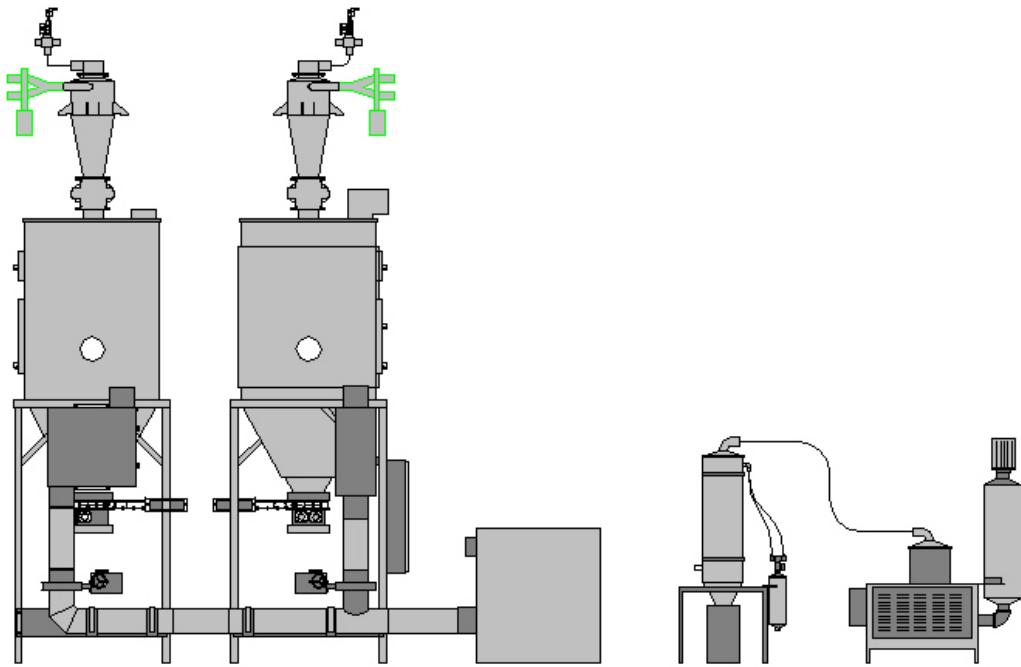


*Thoreson-McCosh Inc*

# **H Unit Dryer**



## ***Instruction Manual***

**IB201502**

**THORESON-McCOSH INC**  
1885 Thunderbird St. Troy MI. 48084  
Phone 1-248-362-0960  
Fax 1-248-362-5270  
[sales@thoresonmccosh](mailto:sales@thoresonmccosh)

# Thoreson-McCosh Inc

## **forward**

The information contained in this Instruction Manual is provided to you for the maintenance of your Thoreson-McCosh equipment.

Also included in this manual are operating instructions, a service parts list, and wiring diagrams. Please file this manual for future use.

For additional information, please contact:

THORESON-McCOSH Inc.  1885 Thunderbird Street  Troy, MI 48084  Phone: (248) 362-0960 Facsimile: (248) 362-5270 <a href="mailto:sales@thoresonmccosh.com">sales@thoresonmccosh.com</a>
---

### CUSTOMER RECORDS

Upon receipt of your Thoreson-McCosh equipment, it is very important that you complete the table below. The information will be needed to best serve you when you call the Thoreson-McCosh Service Department with questions or to order replacement parts. The information is located on the Serial Tag on the unit and inside the door of the control box.

Model Name	_____
Serial No.	_____
Wiring Diagram No.	_____
Insert No.	_____
Program No.	_____
Layout No.	_____

# Thoreson-McCosh Inc

## THORESON MCCOSH EQUIPMENT OPERATION INSTRUCTIONS

- 1) Check that water supply is on to the cooler & plasticizer.
- 2) Check that (2) air valves are both open,
- 3) Take pick-up tube wand out of material box.
- 4) Turn the black controller ON/OFF Toggle Switch to “ON” position.
- 5) Push “SET UP” on Touch Screen.
- 6) Check that settings are as shown for HOPPER 1.  
Make adjustments only as required.

MAIN	SETUP - HOPPER 1	NEXT
200	LOAD TIME (sec)	
100	RECIRC TIME (sec)	
40	DUMP TIME (sec)	
15	NO-LOAD LIMIT	
Off	NO-LOAD ALARM ENABLE	On
70	HOPPER 1 MTRL READY DELAY (min)	

- 7) Push “NEXT” on Touch Screen & repeat steps for HOPPER 2.  
Make adjustments only as required.

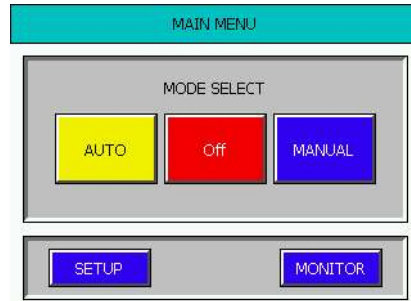
MAIN	SETUP - HOPPER 2	NEXT
150	LOAD TIME (sec)	
100	RECIRC TIME (sec)	
40	DUMP TIME (sec)	
15	NO-LOAD LIMIT	
Off	NO-LOAD ALARM ENABLE	On
60	HOPPER 2 MTRL READY DELAY (min)	

- 8) Push “NEXT” on Touch Screen & check “HEATER SETPOINT” & “COOLER SETPOINT”  
Make adjustments only as required.

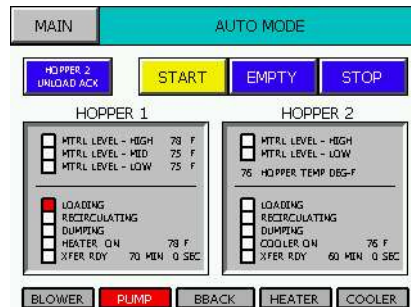
MAIN	SETUP - GENERAL	NEXT
10	LOADS BEFORE BLOWBACK	
2	BLOWER OFF DELAY TIME (MIN)	
2	PUMP OFF DELAY TIME (MIN)	
260	HEATER SETPOINT (DEG-F)	
70	PRECOOLER SETPOINT (DEG-F)	

# Thoreson-McCosh Inc

- 9) Push “MAIN” on Touch Screen to go back to main menu.
- 10) Push “AUTO” on Touch Screen to get to AUTO MODE screen.



- 11) Push “START” on Touch Screen & vacuum pump will turn on.



- 12) Place pick-up tube wand into material box & HOPPER 1 will load.
- 13) The green light & horn on HOT HOPPER 1 will turn on when the hopper is full & has been in the hopper for the set time.
- 14) The HOPPER 1 horn needs to be shut off & HOT material will begin to be transferred to HOPPER 2.
- 15) The green light & horn on HOT HOPPER 2 will turn on when the hopper is full & has been in the hopper for the set time.
- 16) The HOPPER 2 horn needs to be shut off & COOL material is ready to be drained from HOPPER 2.
- 17) Drain the material from COOL HOPPER 2.
- 18) When draining is complete make sure all drain ports on HOPPER 2 are closed.
- 19) Then push the flashing “HOPPER 2 UNLOAD ACK” button on the controller.
- 20) At this time continuous operation will begin.

**IF “HOPPER 2 UNLOAD ACK” IS NOT PUSHED AFTER DRAINING, CONTINUOUS OPERATION WILL STOP!**

# *Thoreson-McCosh Inc*

## **EMPTY PROCEDURE**

**Push “EMPTY” button on the AUTO MODE screen**

**The system will start an auto shut down mode.**

**Everything will run the same as the standard procedure until the HOT HOPPER 1 needs to be refilled.**

**HOPPER 1 will not refill & will shut down when empty.**

**HOPPER 2 will continue to be cooled for the set time & then when drained will shut down.**

**The pump & blower will continue to run for the preset 2 minute period.**

**After pump & blower shut down the empty procedure is complete.**