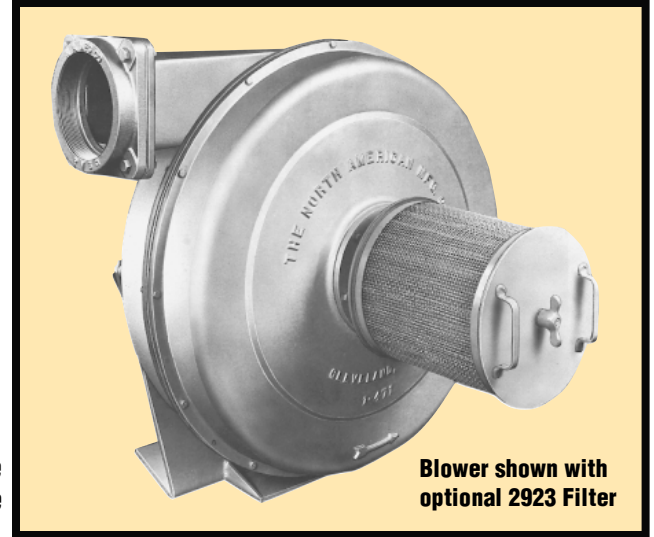




FEATURES

- **Widest range of sizes available in the turbo blower market to meet the needs of the combustion, drying, and process industries.**
- **Energy efficient 60 hertz motors on all blowers 5 hp and above that meet or exceed the 1992 Energy Act which became effective in 1997.**
- **High volume blowers are available in 1800 rpm or 3600 rpm with single or multiple stage designs to meet the needs of the most demanding situations.**
- **Horsepower and impeller selection designed to achieve flat performance curves to minimize variations over the operating range of the blower.**
- **Full array of accessories include filters, silencers, filter silencers, inlet and outlet adapters, flexible sleeves, inlet vane dampers, AC frequency drives, combination motor starters and fusible disconnects. These options offer the protection needed to keep operational costs down while increasing blower life expectancy.**



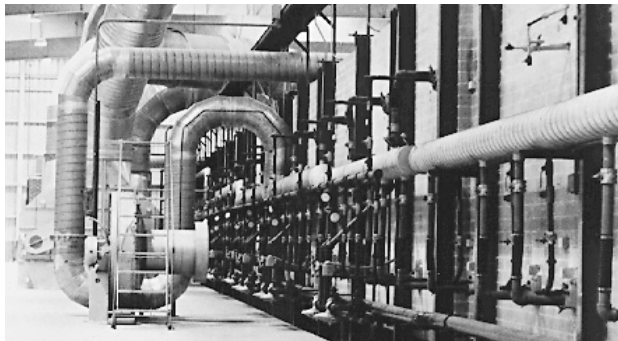
Blower shown with optional 2923 Filter

SELECTION

Pressures and capabilities are shown on the succeeding pages of this bulletin. While motors with 1.15 service factors are more and more available, it is wise to allow some capacity safety margin when picking a blower for a calculated cfm requirements--unanticipated piping leaks, variations in burner capacity, and other unforeseen factors could cause motor overload unless there is some cushion. Without prior knowledge of leakage and other conditions, a 10% safety margin is considered minimum.

It is also important to allow for pressure losses in piping, fittings, and valves, which reduce pressure available at the burner (or other end use).

Altitude and preheated air effect blower ratings--pressure, capacity, and horsepower. For blower selection/performance at altitudes significantly above sea level, the blower section of the North American **Combustion Handbook** is recom-



Typical 2300 Blower Installation

mended. Generally, standard motors can be used up to 3300 feet elevation; special construction is recommended above 3300 feet.

See Bulletin 2600 if Blower will handle air hotter than 250°F.

CONSTRUCTION

All metal construction including mild steel, cast aluminum, or corrosion resistant stainless steel create a nearly indestructible blower allowing for years of trouble free service.

Specially fabricated aluminum or steel impeller designs reduce vibration, lengthen motor life, and lower energy consumption due to lightweight construction technology.

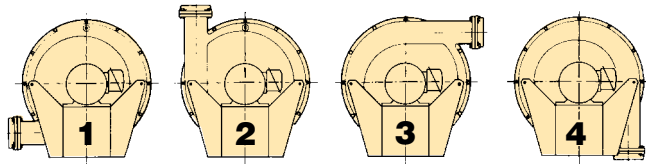
Individual impeller dynamics assured by either single or two plane balancing to minimize vibration and assure longer bearing life.

Strategically positioned bolt hole locations allow for in-field repositioning of air flow discharge.

Standard shaft motors on most single stage blowers reduce replacement downtime in the field.

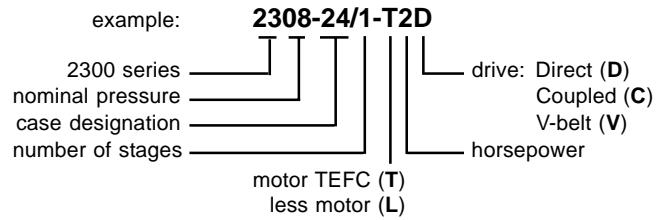
Standard inlet includes a guard. Threaded or SW unthreaded adapters can be specified in place of the guard for mounting optional filters or silencers, or if a 2947 blower sleeve will be used to accommodate inlet piping.

Blowers with 8" or larger discharge are supplied with SW unthreaded adapter suitable for a flexible sleeve or welding. Blowers with 6" or smaller discharge normally have a threaded (fpt) flange, but the SW unthreaded discharge can be specified at no extra cost.



Standard discharge positions (viewed from motor side).
See Supplement 2300-3 for other positions.

BLOWER DESIGNATION EXPLANATION



Nominal pressure osi/"wc	Blower designation	cfm at 100% of motor rating	3600 rpm TEFC 1.15 SF motor	Inlet nominal pipe size	Outlet nominal pipe size	Intake Filter designation	Intake Silencer 2936-	Intake Filter Silencer designation	Approx. weight, lb		
									60 Hertz Direct drive (D)	50 & 60 Hertz V-Belt drive (V)	60 Hertz Coupled drive (C)
4 osi 6.92"wc	2304-11/1-T.3	110	T.33-C36T1SC	3	2	2923-8-11A	None	2942-8-11A	40	100	100
	2308-11/3-T.5	55	T.50-C36T1L4.0C	3	2	2923-8-11A	None	2942-8-11A	50	110	110
8 osi 13.84"wc	2308-14/1-T.5	60	T.50-C36T1SC	3	3	2923-8-14A	"	2942-8-14A	80	230	210
	2308-14/1-T.75	170	T.75-C36T1SC	3	3	2923-8-14A	"	2942-8-14A	80	230	210
	2308-17/1-T1	220	T1.0-C36T1SC	3	4	2923-8-17A	"	2942-8-17A	90	320	260
	2308-14/1-T1	250	T1.0-C36T1SC	3	3	2923-8-14A	"	2942-8-14A	80	230	210
	2308-17/1-T1.5	390	T1.5-C36T1SC	4	6	2923-10-17A	None	2942-10-17A	120	320	260
	2308-24/1-T2	460	T2.0-C36T1SC	6	6	2923-10-24A	8-24	2942-10-24A	150	470	400
	2308-24/1-T3	770	T3.0-C36T1SC	6	8	2923-12-24A	8-24	2942-12-24A	170	490	420
	2308-31/1-T5	1200	T5.0-C36T1SC	8	10	2923-18-31A	9-31	2942-18-31A	240	700	500
	2308-31/1-T7.5	1900	T7.5-C36T1SC	8	10	2923-18-31A	9-31	2942-18-31A	280	750	550
	2308-21/1-T10	2600	T10-C36T1SC	10	12	2923-22-21A	10-21	2942-22-21A	570	950	700
10 osi 17.3"wc	2310-11/4-T.5	80	T.50-C36T1L5.2	3	2	2923-8-11A	None	2942-8-11A	60	120	210
	2310-19/1-T.75	70	T.75-C36T1SC	3	3	2923-8-19A	"	2942-8-19A	90	300	300
	2310-19/1-T1	150	T1.0-C36T1SC	3	4	2923-8-19A	"	2942-8-19A	90	300	300
	2310-19/1-T1.5	290	T1.5-C36T1SC	4	6	2923-8-19B	"	2942-8-19B	130	340	340
	2310-19/1-T2	400	T2.0-C36T1SC	4	6	2923-10-19A	None	2942-10-19A	140	350	350
	2310-26/1-T3	580	T3.0-C36T1SC	6	6	2923-10-26A	8-26	2942-10-26A	190	500	500
	2310-26/1-T5	1000	T5.0-C36T1SC	6	8	2923-12-26A	8-26	2942-12-26A	210	520	520
	2310-35/1-T7.5	1500	T7.5-C36T1SC	8	10	2923-18-35A	9-35	2942-18-35A	430	800	600
	2310-21/1-T10	1900	T10-C36T1SC	10	12	2923-22-21A	10-21	2942-22-21A	580	950	700
	2310-39/1-T50	12850	T50-C36T1SD	22	24	2921-1802-8/39	18-39	2941-1802-8/39	1250	-	-
12 osi 20.76"wc	2310-39/1-T60	15000	T60-C36T1SD	24	24	2921-2403-12/39	24-39	2941-2403-12/39	1510	-	-
	2310-39/1-T75	18300	T75-C36T1SD	24	24	2921-2403-12/39	24-39	2941-2403-12/39	1620	-	-
	2310-39/1-T100	24000	T100-C36T1SD	26	26	2921-2403-12/39	24-39	2941-2403-12/39	1820	-	-
	2310-39/1-T125	28000	T125-C36T1SD	26	30	Consult Cleveland			2400	-	-
	2312-11/4-T.5	50	T.50-C36T1L5.2C	3	2	2923-8-11A	None	2942-8-11A	60	120	120
	2312-19/1-T1	100	T1.0-C36T1SC	3	3	2923-8-19A	"	2942-8-19A	90	300	300
	2312-19/1-T1.5	220	T1.5-C36T1SC	4	4	2923-8-19B	"	2942-8-19B	130	340	340
	2312-19/1-T2	340	T2.0-C36T1SC	4	6	2923-8-19B	"	2942-8-19B	140	350	350
	2312-26/1-T3	450	T3.0-C36T1SC	6	6	2923-10-26A	8-26	2942-10-26A	190	500	500
	2312-26/1-T5D	850	T5.0-C36T1SC	6	8	2923-14-26A	8-26	2942-14-26A	210	520	520
16 osi 27.68"wc	2312-35/1-T7.5	1400	T7.5-C36T1SC	8	8	2923-18-35A	9-35	2942-18-35A	430	800	600
	2312-35/1-T10	1700	T10-C36T1SC	8	10	2923-18-35A	9-35	2942-18-35A	450	820	620
	2312-21/1-T15	2600	T15-C36T1SC	14	12	2923-22-21B	14-21	2942-22-21B	600	1000	750
	2312-34/1-T20	4000	T20-C36T1SD	14	16	2923-30-34A	14-34	2942-30-34A	710	-	-
	2312-34/1-T25	4900	T25-C36T1SD	14	16	2923-30-34A	14-34	2942-30-34A	850	-	-
	2312-34/1-T30	5500	T30-36CT1SD	16	20	2923-30-34B	16-34	2942-30-34B	1030	-	-
	2312-34/1-T40	7300	T40-C36T1SD	16	20	2921-1602-8/34	16-34	2941-1602-8/34	1150	-	-
	2312-37/1-T50	10100	T50-C36T1SD	18	22	2921-1802-8/37	18-37	2941-1802-8/37	1200	-	-
	2312-37/1-T60	12050	T60-C36T1SD	18	24	2921-1802-8/37	18-37	2941-1802-8/37	1460	-	-
	2316-14/2-T1	90	T1.0-C36T1L5.5C	3	3	2923-8-14A	None	2942-8-14A	100	250	230
2316-14/2-T1.5	150	T1.5-C36T1L6.7C	3	3	2923-8-14A	"	2942-8-14A	140	290	270	
2316-17/2-T1.5	150	T1.5-C36T1L6.7C	4	4	2923-8-17B	"	2942-8-17B	110	345	285	
2316-19/1-T2	150	T2.0-C36T1SC	4	4	2923-8-19B	"	2942-8-19B	140	350	350	
2316-17/2-T2	220	T2.0-C36T1L6.7C	4	4	2923-8-17B	None	2942-8-17B	140	340	380	
2316-26/1-T3	290	T3.0-C36T1SC	6	6	2923-8-26A	8-26	2942-8-26A	300	605	490	
2316-17/2-T3	340	T3.0-C36T1L6.7C	4	6	2923-10-17A	None	2942-10-17A	160	360	400	
2316-19/1-T3	340	T3.0-C36T1SC	4	6	2923-10-19A	"	2942-10-19A	160	370	370	

Nominal pressure osi/wc	Blower designation	cfm at 100% of motor rating	3600 rpm TEFC 1.15 SF motor	Inlet nominal pipe size	Outlet nominal pipe size	Intake Filter designation	Intake Silencer 2936-	Intake Filter Silencer designation	Approx. weight, lb		
									60 Hertz Direct drive (D)	50 & 60 Hertz V-Belt drive (V)	60 Hertz Coupled drive (C)
16 osi 27.68"wc	2316-24/2-T3	350	T3.0-C36T1L7.0C	6	6	2923-8-24A	8-24	2942-8-24A	205	510	435
	2316-24/2-T5	600	T5.0-C36T1L7.0C	6	6	2923-10-24A	8-24	2942-10-24A	220	530	470
	2316-28/1-T5	600	T5.0-C36T1SC	8	6	2923-14-28A	9-28	2942-14-28A	215	720	570
	2316-26/1-T5	620	T5.0-C36T1SC	6	6	2923-12-26A	8-26	2942-12-26A	220	530	530
	2316-31/2-T7.5	850	T7.5-C36T1L8.3C	8	8	2923-14-31A	9-31	2942-14-31A	320	790	590
	2316-28/1-T7.5	950	T7.5-C36T1SC	8	6	2923-14-28A	9-28	2942-14-28A	235	810	630
	2316-26/1-T7.5	1000	T7.5-C36T1SC	6	8	2923-14-26A	8-26	2942-14-26A	260	570	570
	2316-31/2-T10	1200	T10-C36T1L8.3C	8	8	2923-18-31A	9-31	2942-18-31A	340	810	610
	2316-35/1-T10	1300	T10-C36T1SC	8	8	2923-18-35B	9-35A	2942-18-35B	460	830	630
	2316-21/1-T15	1950	T15-C36T1SC	10	10	2923-22-21A	10-21	2942-22-21A	425	1150	885
	2316-35/1-T15	2000	T15-C36T1SC	8	10	2923-18-35B	9-35A	2942-18-35B	490	860	660
	2316-21/1-T20	2700	T20-C36T1SC	10	10	2923-22-21A	10-21	2942-22-21A	670	1050	820
	2316-33/1-T25	3300	T25-C36T1SC	12	12	2923-22.5-33A	12-33	2942-22.5-33A	1100	1900	1400
	2316-33/1-T30	4100	T30-C36T1SC	12	14	2923-30-33A	12-33	2942-30-33A	1200	2000	1500
	2316-37/1-T40	5300	T40-C36T1SD	16	18	2923-30-37A	16-37	2942-30-37A	1090	-	-
	2316-37/1-T50	6730	T50-C36T1SC	16	18	2921-1602-8/37	16-37	2941-1602-8/37	1100	-	-
	2316-37/1-T60	8650	T60-C36T1SD	18	24	2921-1802-8/37	16-37	2941-1802-8/37	1420	-	-
	2316-37/1-T75	11000	T75-C36T1SD	18	24	2921-1802-8/37	18-37	2941-1802-8/37	1570	-	-
	2316-37/1-T100	14500	T100-C36T1SD	20	24	2921-2003-12/37	20-37	2941-2003-12/37	1730	-	-
	20 osi 34.60"wc	2320-19/2-T1.5	100	T1.5-C36T1L6.7C	3	3	2923-8-19A	None	2942-8-19A	160	370
2320-19/2-T2		170	T2.0-C36T1L6.7C	4	4	2923-8-19B	"	2942-8-19B	170	380	380
2320-19/2-T3		290	T3.0-C36T1L7.0C	4	4	2923-8-19B	"	2942-8-19B	190	400	400
2320-26/2-T5		500	T5.0-C36T1L7.0C	6	6	2923-10-26A	8-26	2942-10-26A	260	570	570
2320-26/2-T7.5		720	T7.5-C36T1L7.0C	6	6	2923-12-26A	8-26	2942-12-26A	300	610	610
2320-35/1-T10		1000	T10-C36T1SC	8	8	2923-14-35B	9-35A	2942-14-35B	470	840	640
2320-21/1-T15		1500	T15-C36T1SC	10	8	2923-18-21A	10-21	2942-18-21A	625	1150	885
2320-35/1-T15		1700	T15-C36T1SC	8	8	2923-18-35B	9-35A	2942-18-35B	550	920	720
2320-21/1-T20		2100	T20-C36T1SC	10	10	2923-22-21A	10-21	2942-22-21A	680	1050	830
2320-33/1-T25		2900	T25-C36T1SC	12	12	2923-22.5-33A	12-33	2942-22.5-33A	1100	1900	1400
2320-33/1-T30		3400	T30-C36T1SC	12	12	2923-22.5-33A	12-33	2942-22.5-33A	1200	2000	1500
2320-33/1-T40		4500	T40-C36T1SC	12	14	2923-30-33A	12-33	2942-30-33A	1250	2050	1550
2320-33/1-T50		5800	T50-C36T1SC	12	14	2921-1202-6/33	12-33	2941-1202-6/33	1800	2400	2300
2320-37/1-T60		7700	T60-C36T1SD	18	20	2921-1802-8/37	18-37	2941-1802-8/37	1410	-	-
2320-37/1-T75		8900	T75-C36T1SD	18	20	2921-1802-8/37	18-37	2941-1802-8/37	1490	-	-
2320-37/1-T100	11830	T100-C36T1SD	18	22	2921-1802-8/37	18-37	2941-1802-8/37	1620	-	-	
2320-37/1-T125	14800	T125-C36T1SD	20	26	2921-2003-12/37	20-37	2941-2003-12/37	2360	-	-	
2320-37/1-T150	17800	T150-C36T1SD	22	26	2921-2403-12/37	24-37	2941-2403-12/37	2500	-	-	
24 osi 41.52"wc	2324-14/3-T1.5	80	T1.5-C36T1L9.0C	3	3	2923-8-14A	None	2942-8-14A	160	310	290
	2324-14/3-T2	120	T2.0-C36T1L9.0C	3	3	2923-8-14A	"	2942-8-14A	170	320	300
	2324-19/2-T3	210	T3.0-C36T1L7.0C	4	4	2923-8-19B	"	2942-8-19B	100	400	400
	2324-26/2-T5	370	T5.0-C36T1L7.0C	6	6	2923-10-26A	8-26	2942-10-26A	260	570	570
	2324-26/2-T7.5	600	T7.5-C36T1L7.0C	6	6	2923-12-26A	8-26	2942-12-26A	300	610	610
	2324-35/2-T10	810	T10-C36T1L8.3C	8	8	2923-14-35A	9-35	2942-14-35A	520	890	690
	2324-35/2-T15	1400	T15-C36T1L8.3C	8	8	2923-18-35A	9-35	2942-18-35A	550	920	720
	2324-21/1-T20	1800	T20-C36T1SC	10	10	2923-18-21A	10-21	2942-18-21A	680	1050	830
	2324-33/1-T25	2400	T25-C36T1SC	12	12	2923-22-33A	12-33	2942-22-33A	1100	1900	1400
	2324-33/1-T30	2800	T30-C36T1SC	12	12	2923-22-33A	12-33	2942-22-33A	1200	2000	1500
	2324-33/1-T40	3700	T40-C36T1SC	12	12	2923-30-33A	12-33	2942-30-33A	1250	2050	1550
	2324-33/1-T50	5200	T50-C36T1SC	14	14	2921-1402-6/33	12-33	2941-1202-6/33	1350	2150	1650
32 osi 55.36"wc	2324-33/1-T60	6200	T60-C36T1SC	14	14	2921-1402-8/33	14-33	2941-1402-8/33	1400	2200	1700
	2324-37/1-T75	7300	T75-C36T1SD	16	20	2921-1602-8/37	16-37	2941-1602-8/37	1490	-	-
	2324-37/1-T100	10000	T100-C36T1SD	18	24	2921-1802-8/37	18-37	2941-1802-8/37	1690	-	-
	2324-37/1-T125	12400	T125-C36T1SD	18	24	2921-1802-8/37	18-37	2941-1802-8/37	2230	-	-
	2324-37/1-T150	14800	T150-C36T1SD	22	24	2921-2403-12/37	24-37	2941-2403-12/37	2370	-	-
	2332-19/3-T3	90	T3.0-C36T1L10.6C	4	4	2923-8-19B	None	2942-8-19B	190	400	400
	2332-19/3-T5	260	T5.0-C36T1L10.6C	4	4	2923-8-19B	"	2942-8-19B	210	420	420
	2332-28/2-T7.5	330	T7.5-C36T1L8.3C	8	6	2923-14-28A	9-28	2942-14-28A	380	650	700
2332-28/2-T10	600	T10-C36T1L8.3C	8	6	2923-14-28A	9-28	2942-14-28A	400	670	720	

Nominal pressure osi/wc	Blower designation	cfm at 100% of motor rating	3600 rpm TEFC 1.15 SF motor	Inlet nominal pipe size	Outlet nominal pipe size	Intake Filter designation	Intake Silencer 2936-	Intake Filter Silencer designation	Approx. weight, lb		
									60 Hertz Direct drive (D)	50 & 60 Hertz V-Belt drive (V)	60 Hertz Coupled drive (C)
32 osi 55.36"wc	2332-28/2-T15	900	T15-C36T1L8.3C	8	6	2923-14-28A	9-28	2942-14-28A	430	700	750
	2332-21/2-T20	1100	T20-C36T1L10.0C	10	8	2923-18-21A	10-21	2942-18-21A	680	1050	830
	2332-21/2-T25	1500	T25-C36T1L10.7C	10	8	2923-18-21A	10-21	2942-18-21A	710	1100	860
	2332-21/2-T30	1800	T30-C36T1L10.7C	10	8	2923-18-21A	10-21	2942-18-21A	780	1150	930
	2332-21/2-T40	2400	T40-C36S1L10.7C	10	8	2923-22-21A	10-21	2942-22-21A	810	1200	960
	2332-33/2-T50	3200	T50-C36T1L12.0C	12	12	2923-22.5-33A	12-33	2942-22.5-33A	1450	2250	1750
	2332-33/2-T60	3900	T60-C36T1L12.0D	12	12	2923-30-33A	12-33	2942-30-33A	1500	2300	1800
	2332-37/1-T75	6050	T75-C36T1SD	16	20	2921-1602-8/37	16/37	2941-1602-8/37	1700	-	-
	2332-37/1-T100	8350	T100-C36T1SD	16	24	2921-1602-8/37	16/37	2941-1602-8/37	1850	-	-
	2332-37/1-T125	10300	T125-C36T1SD	16	24	2921-1602-8/37	16/37	2941-1602-8/37	2400	-	-
2332-37/1-T150	12050	T150-C36T1SD	18	24	2921-1802-8/37	18/37	2941-1802-8/37	2520	-	-	
44 osi 76.12"wc	2344-28/3-T15	640	T15-C36T1L13.5C	8	6	2923-14-28A	9-28	2942-14-28A	510	780	830
	2344-28/3-T20	900	T20-C36T1L13.5C	8	6	2923-14-28A	9-28	2942-14-28A	580	850	900
	2344-21/2-T30	1400	T30-C36T1L10.7C	10	8	2923-18-21A	10-21	2942-18-21A	780	1150	930
	2344-21/2-T40	1900	T40-C36S1L10.7C	10	8	2923-18-21A	10-21	2942-18-21A	810	1200	960
	2344-21/2-T50	2500	T50-C36S1L10.7C	10	8	2923-22-21A	10-21	2942-22-21A	900	1300	1050
1800 rpm											
8 osi 13.84"wc	2308-44/1-T10	2700	T10-C18T1SC	16	16	2923-30-44A	16-44	2942-30-44A	1400	2100	2000
	2308-44/1-T15	4100	T15-C18T1SC	16	16	2923-30-44A	16-44	2942-30-44A	1450	2150	2050
	2308-44/1-T20	5500	T20-C18T1SC	16	18	2921-1602-6/44	16-44	2941-1602-6/44	1500	2200	2100
	2308-44/1-T25	6500	T25-C18T1SC	16	18	2921-1602-8/44	16-44	2941-1602-8/44	1650	2300	2200
	2308-44/1-T30	7200	T30-C18T1SC	16	18	2921-1602-8/44	16-44	2941-1602-8/44	1650	2350	2250
	2308-47/1-T40	10000	T40-C18T1SC	24	24	2921-2403-12/47	24/47	2941-2403-12/47	1800	2100	2100
10 osi 17.30"wc	2310-47/1-T40	8000	T40-C18T1SC	24	20	2923-2403-12/47	24-47	2941-2403-12/47	1800	2100	2100
	2310-47/1-T50	10500	T50-C18T1SC	24	24	2923-2403-12/47	24-47	2941-2403-12/47	1850	2200	2200
12 osi 20.76"wc	2312-41/1-T20	4000	T20-C18T1SC	16	16	2923-30-41A	16-41	2942-30-41A	1500	2200	2100
	2312-41/1-T25	4900	T25-C18T1SC	16	16	2923-30-41A	16-41	2942-30-41A	1600	2300	2200
	2312-41/1-T30	5500	T30-C18T1SC	16	16	2921-1602-6/41	16-41	2941-1602-6/41	1650	2350	2250
	2312-47/1-T40	7100	T40-C18T1SC	24	18	2921-2403-12/47	24-47	2941-2403-12/47	1900	2200	2200
	2312-41/1-T40	7300	T40-C18T1SC	16	18	2921-1602-8/41	16-41	2941-1602-8/41	1750	2450	2350
	2312-47/1-T50	10000	T50-C18T1SC	20	20	2921-2403-12/47	24-47	2941-2403-12/47	1950	2300	2300
16 osi 27.68"wc	2316-41/1-T20	3000	T20-C18T1SC	16	12	2923-30-41A	16/41	2942-30-41A	1500	2200	2100
	2316-41/1-T25	3700	T25-C18T1SC	16	12	2923-30-41A	16/41	2942-30-41A	1600	2200	2100
	2316-41/1-T30	4500	T30-C18T1SC	16	16	2923-30-41A	16/41	2942-30-41A	1650	2250	2150
	2316-41/1-T40	5500	T40-C18T1SC	16	16	2921-1602-6/41	16/41	2941-1602-6/41	1750	2350	2250
	2316-41/1-T50	7000	T50-C18T1SC	16	16	2921-1602-8/41	16/41	2941-1602-8/41	1800	2400	2300
	2316-47/1-T75V	11500	T75-C18T1SD	20	24	2921-2403-12/47	24/47	2941-2403-12/47	-	2400	-
20 osi 34.6"wc	2320-41/1-T25	2600	T25-C18T1SC	16	12	2923-30-41A	16-41	2942-30-41A	1600	2200	2100
	2320-41/1-T30	3300	T30-C18T1SC	16	12	2923-30-41A	16-41	2942-30-41A	1650	2250	2150
	2320-41/1-T40	4500	T40-C18T1SC	16	16	2923-30-41A	16-41	2942-30-41A	1750	2350	2250
	2320-41/1-T50	5800	T50-C18T1SC	16	16	2921-1602-6/41	16-41	2941-1602-6/41	1800	2400	2300
	2320-41/1-T60	7300	T60-C18T1SD	16	16	2921-1602-8/41	16-41	2941-1602-8/41	1900	2500	2400
24 osi 41.52"wc	2324-41/1-T30V	2300	T30-C18T1SC	16	12	2923-30-41A	16-41	2942-30-41A	-	2250	-
	2324-41/1-T40V	3500	T40-C18T1SC	16	12	2923-30-41A	16-41	2942-30-41A	-	2350	-
	2324-41/1-T50V	4700	T40-C18T1SC	16	16	2923-30-41A	16-41	2942-30-41A	-	2400	-
	2324-41/1-T60V	6200	T60-C18T1SD	16	16	2921-1602-8/41	16-41	2941-1602-8/41	-	2500	-
2324-41/1-T75V	7900	T75-C18T1SD	16	16	2921-1602-8/41	16-41	2941-1602-8/41	-	2550	-	
32 osi 55.36"wc	2332-41/2-T75C	4500	T75-C18T1SD	16	12	2923-30-41A	16-41	2942-30-41A	-	-	2850
	2332-41/2-T100C	6200	T100-C18T1SD	16	16	2921-1602-8/41	16-41	2941-1602-8/41	-	-	2900
	2332-41/2-T125C	7100	T125-C18T1SD	16	16	2921-1602-8/41	16-41	2941-1602-8/41	-	-	3100
38 osi 65.74"wc	2338-41/2-T75C	3800	T75-C18T1SD	16	12	2923-30-41A	16-41	2942-30-41A	-	-	2850
	2338-41/2-T100C	5600	T100-C18T1SD	16	12	2921-1602-6/41	16-41	2941-1602-6/41	-	-	2900

WARNING: Situations dangerous to personnel and property can develop from incorrect operation of combustion equipment. North American urges compliance with National Safety Standards and Insurance Underwriters recommendations, and care in operation.

North American Mfg. Co., Ltd., 4455 East 71st Street, Cleveland, OH 44105-5600 USA, Tel: +1.216.271.6000, Fax: +1.216.641.7852
email: sales@namfg.com • www.namfg.com