



Where Quilting & Sewing Meet

Call Us At 847-683-4739

Visit our Website:

www.StitchingOnState.com

friends!!

Dear Spring designed by Cassandra Connolly for Lewis & Irene is here!

Featuring bunnies frolicking with butterflies amongst Spring flowers in soft pastels, this collection is a true love letter to Spring!



Dear Spring by Cassandra Connolly

Dear Spring,

Oh, how I've missed you. You've been away so long!

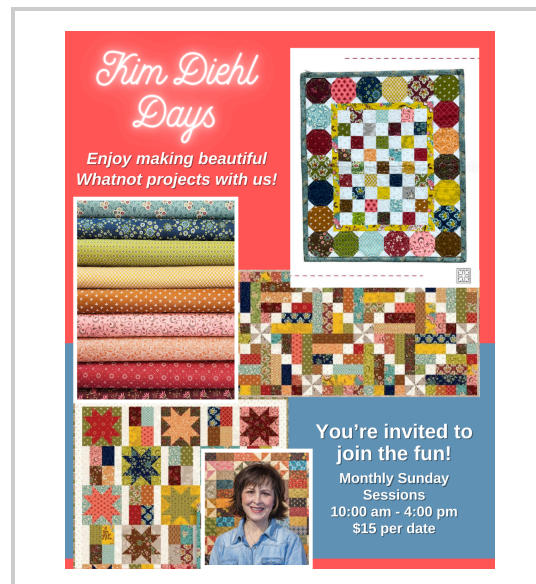
I cannot wait to see you and have you back where you belong.

The primroses in the prairie, they gossip, and they natter,
 I heard a warm whisper on the breeze, amongst all their idle chatter.
 Someone said you're on your way, please tell me is it true?
 We're planning to have a welcome party, and there's so much left to do!
 Everyone's excited, from the blossoms to the blooms.
 The rabbits have started gathering decorations, the birds are practicing their tunes.
 Blossom by blossom, the buds have been dancing, ditsy with delight.
 A sweet symphony of colour, causing quite a sight.
 We're counting down the days now. Not long until you're here!
 I've really missed your playful ways, your laughter and your cheer.
 Funny, I fancied that I just saw you, outside where the sun is shining bright.
 I thought I glimpsed your floral cloak, or perhaps it was a trick of the light?
 I really must go now; you're causing quite a furore.
 I wonder, who could that be, knocking at my door?



The Northern Illinois Quilt Shop is starting on March 1st! Grab a passport at our shop or [CLICK HERE](#) for a printable version. We can't wait!

- Visit 22 Participating Shops March 1st - April 30th
- Grand Prize \$1,200 & First Prize \$800
- And many other fun prizes!
- Enjoy 15% off regular priced merchandise on the day your passport is stamped at each shop!



Community sewing time - Kim Diehl Days

Sew with us on Sunday, Feb. 15th (10 am to 4 pm) for a \$15 session. We host a monthly Kim Diehl sewing day and anyone can sign up! In this session, you may work on any Kim Diehl project or pattern using her fabric collections. Sign up in-store or [ONLINE](#).

It's never too late to join our FREE Kim Diehl Club! Here's what you need to know on our [BLOG POST](#). *It's always more fun to sew in a group with a common thread!*

The advertisement features a white and black PFAFF Passport 2.0 sewing machine against a dark background. A red diagonal banner in the top left corner reads "SPECIAL OFFER". To the left of the machine, text lists a "\$100 off + \$50 in free fabric from our color wall!" and four bullet points: "Lightweight 13 lb. 9 oz", "Perfect travel machine", "Full PFAFF Warranty!", and "Hurry in - limited availability!". The machine itself has "PFAFF" and "passport2.0" printed on it. In the bottom right corner, there is a circular logo for "STITCHING ON STATE" featuring a house illustration.

SPECIAL OFFER

PFAFF® Passport 2.0 Classroom Machine!

\$100 off + \$50 in free fabric from our color wall!

- Lightweight 13 lb. 9 oz
- Perfect travel machine
- Full PFAFF Warranty!
- Hurry in - limited availability!

STITCHING ON STATE

SPECIAL OFFER—they're going fast!

Hurry in for our PFAFF® Passport 2.0 classroom machine deal featuring \$100 off and \$50 in free fabric from our color wall (only a few left)!

- Perfect travel machine - lightweight 13 lbs. 9 oz.
- FULL PFAFF® warranty
- Enjoy 70 built-in stitches, including utility, decorative, and quilting stitches for endless creative possibilities.
- Built-in needle threader, start/stop button, and speed control slider for convenience and efficiency!

The Original IDT™ System ensures perfect fabric feeding, delivering consistent and professional results on everything from delicate silks to thick layers of denim or batting. For even greater versatility, the Passport 2.0 also supports free-motion sewing and offers an optional extension table for larger projects. Visit us ASAP to learn more!



Valentine Fabric Bundles



Valentine Ombre Runner

1/2" yard
Table
Runner

1/4" yard
added for
binding

We have the cutest fabric bundles ready to grab and go for Valentine's and St. Patrick's Day projects! We also have the prettiest fabric bundles in both brights and pastels.

You will LOVE the Valentine ombre fabrics - three colors to choose from!

How cute is this table runner??! Take 1/2 of a yard and quilt a simple grid (trim sides to 16" to 18") and finish with 1/4 yard for the binding! (3 binding strips) Adorable (and SEW EASY)!

UPCOMING CLASSES:

All class supplies purchased at Stitching on State are discounted 15% and enjoy a 15% off in-store discount on the day of your class!



Learn new skills! We're excited about our 2026 classes and projects! Stay tuned for the annual Block-of-the-Month news and "Teacher open house".

2/07 (& 2/14 - Two Saturday Sessions) T-Shirt Quilt Class (11 am - 3 pm). Have you been collecting t-shirts in hope of making a memory quilt? Well, now's the time to dig those shirts out and let's put together a t-shirt quilt. Skill level: Intermediate, general sewing knowledge. [SIGN UP](#)

2/08 (Sun., 1-5 pm) - Fancy Forest Class. Did you participate in our Fancy Fox class previously? Interested in making the entire Fancy Forest quilt?! Learn more here - [SIGN UP](#). *We just love this pattern by Elizabeth Hartman!*

2/15 (Sun.) Kim Diehl Days 2026 - Join our fun group! 10 am - 4 pm. This year, we're featuring Kim Diehl's Love Struck fabric collection for Henry Glass. Enjoy piecing together beautiful Whatnot projects with us in 2026! [SIGN UP](#)

2/16 (Mon.) Learn how sew a Mondo, Midi, or Bitty Bag! Join us on 2/16 (10:30 am - 4 pm) for this fun class. Spend a wonderful day making an awesome tote using the Quiltsmart printed interfacing panel Fun Pack. The Mondo Bag and its two companion sizes, the Midi and the cute Bitty Bag, are the perfect bags for the beach, a weekend away, a diaper bag, and more! (Previous Mondo/Midi bag students can [revisit the class](#) for \$15). [SIGN UP](#)

2/18 (Wed.) Slow Stitchers - Monthly Meet Up (6:30-9 pm) Relax and enjoy sewing, embroidery, needle turn, EPP, big stitch, hand quilting, hand piecing, hand binding quilts, or fiber arts (ALL hand work projects are welcome)! We have just one rule - no machines. [SIGN UP](#)

2/21 (Sat.) Sew with Friends - (10 am - 4 pm). 💖🧵✨ Work on any project you'd like! If you've taken any of Jan's classes and would like to complete a project or make another, she will be available to help you. Bring your sewing machine and any needed tools or supplies (or shop for new project inspiration at 15% off). Session sign-up fee is \$15. [SIGN UP](#)

2/22 (Sun.) Sit & Sew Sunday - NEW Monthly Meet Ups (10 am - 4 pm). Bring your machine and catch up on all of your projects! If you've signed up for Saturday Sew with Friends on Feb. 21st (10 am to 4 pm), then you can simply leave your machine and projects Saturday night at our shop! Call our shop to sign up for \$15 session - (847) 683-4739.

2/28 (Sat.) Scrappy Pineapple Quilt Class - You can learn how to make the traditional pineapple block using the Trash to Treasure Pineapple Tool. 9:30 am - 4 pm class \$45. [SIGN UP ONLINE](#)
Returning Students - Pineapple Class Revisit - Sat. 2/28 for \$20. [SIGN UP](#)

2/28 (Sat.) Late Night Lock In (6 pm to Midnight) - Bring your projects and get caught up! Sew, shop, snack & visit with fellow sewists/quilters. Dessert will be served around 9 pm (\$15/session). [SIGN UP](#). *Future date - 3/21*

3/01 (Sun.) Crazy Little Hen Pin Cushion (1 - 4 pm). This little chicken will look fantastic in your sewing room and makes great gifts. Learn how to make small crazy quilt blocks using the sew n flip method. Embellish your blocks with the fun decorative stitches that are on your sewing machine, then turn the two blocks into an adorable pin cushion. So much fun, you'll want to make entire flock! [SIGN UP](#)

Crazy Little Hen Pin Cushion Sewing Class



Learn how to make small
crazy quilt blocks using the
“Sew-N-Flip” method.

National Embroidery Month Sale:

25% off PFAFF® hoops, stabilizer, thread & specialty embroidery accessories. Shop in-store (in-stock) items by 2/28/26 to save BIG!

NATIONAL EMBROIDERY MONTH SALE

February 1 - 28, 2026

PFAFF
Perfection starts here.™

25% OFF

All PFAFF® Hoops, Stabilizer,
Thread and Specialty
Embroidery Accessories



Create Magic!

Dreaming of a new machine? Come on in - we're ready to help you live your dream sewing and embroidery experience:

NATIONAL EMBROIDERY MONTH SALE

February 1 - 28, 2026

PFAFF
Perfection starts here.™

creative performance™ 950
Sewing & Embroidery Machine



Buy the Bundle and Save



Celebrate National Embroidery Month & save BIG!

PFAFF® creative performance™ 950 Bundle

Save over \$5,600 on the creative performance™ 950 Bundle — includes the machine, creative™ embellishment attachment, embellishment attachment sampler kit, and PFAFF® large roller bag. This high-performance bundle features Automatic Zoom for effortless design scaling! Sale ends 2/28/26.

NATIONAL EMBROIDERY MONTH SALE

February 1 - 28, 2026



creative expression™ 750

Sewing & Embroidery Machine



Buy the Bundle and Save



PFAFF® creative expression™ 750 Bundle Deal:

Save big on the creative expression™ 750 Bundle — NOW \$8,899 (MSRP \$11,499). Includes the 750 machine, 180 x 130 mm metal hoop, and extension table with adjustable guide. **Limited-time bundle offer—hurry in by 2/28/26 to learn more about this amazing deal while supplies last!**



PFAFF® creative icon™ 2 Bundle - Save over \$7,900 off of MSRP on the creative icon™ 2 Bundle (MSRP \$22,999) — includes magnifying lens set, creative™ embellishment attachment, embellishment attachment sampler kit, and Luxe Collection machine case!



PFAFF® creative expect™ 350
The creative expect 350 during our National Embroidery Month celebration is now only \$1,149* (MSRP \$1,999). This machine features reliable performance for sewists! Limited quantity available on all PFAFF® sale offers. Shop by 2/28/26 for Embroidery Month.

Tune in to our Tuesday LIVE online events on Facebook!

We'll chat about new fabrics, cool classes & shop news! Watch LIVE at 4 pm Central on Tuesdays. If you miss our LIVE videos, you can [watch the replays](#).

Our next FB live event is on Feb. 10th!

We'll "see you" when you log in to view and comment on Tuesdays! RSVP for reminders about FB our events [HERE](#).



Shop with us Tues. through Fri., 10 am-3 pm & Sat., 10 am-4 pm.

Did you know we're open the 2nd Sunday of each month (12-4 pm)?
—**next one is this Sunday, Feb. 8th. Mark your calendar!**

We're also open late the 2nd Thursday of every month!

Our next late night shopping event on Feb. 12th (open until 8 pm).
Enjoy an evening getaway at your favorite happy place (and ours)!

If you're looking for a new machine, we're your resource for PFAFF® sewing, quilting and embroidery machines! Your machine comes with personal 1:1 instruction, machine cleaning for your first year, and one year of 15% off purchases at our shop! Visit us today or call for an appointment to test out one of our beautiful machines.

Thank you for shopping local! You mean the world to our small family business. Questions? Give us a call at (847) 683-4739.

The Stitching on State Team

Stitching On State

290 South State Street * P O Box 908
Hampshire, IL 60140
Phone: 847-683-4739

E-Mail us Today!



www.StitchingOnState.com

Stitching on State | 290 South State Street | Hampshire, IL 60140 US

[Unsubscribe](#) | [Update Profile](#) | [Constant Contact Data Notice](#)



Try email marketing for free today!