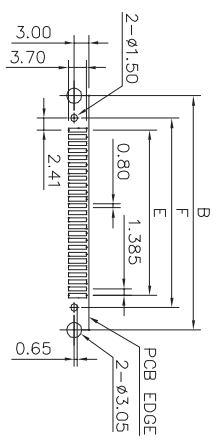
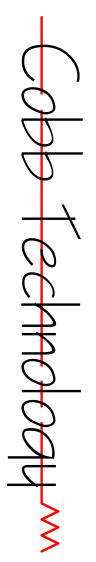


Dimensions

Positions	A	B	C	D	E	F
9	30.81	24.99	16.92	16.33	11.08	15.90
25	53.05	47.04	38.96	38.38	33.24	38.06



MALE PIN NUMBER: 5 9 4 8 3 7 2 6 1
 MALE PIN NUMBER: 13 25 12 24 11 23 10 22 9 21 8 20 7 19 6 18 5 17 4 16 3 15 2 14 1
 FEMALE PIN NUMBER: 1 6 2 7 3 8 4 9 5
 FEMALE PIN NUMBER: 1 14 2 15 3 16 4 17 5 18 6 19 7 20 8 21 9 22 10 23 11 24 12 25 13
 9 PIN RECOMMENDED PCB LAYOUT
 25 PIN RECOMMENDED PCB LAYOUT



1.0	Initial Release	N. Boon	04-Feb-2016
REV.	ECN. NO.	DR BY	DATE

MAT'L:		FINISH:	
D-Sub, SMT Style			
XX: ± 0.40	Y: ± 3.0	TITLE :	D-Sub, SMT Style
XXX: ± 0.25	XX: ± 2.0	APPO.:	PART NO. : 167 Series Family
X.XXX: ± 0.15	X.XX: ± 1.5	CHKD.:	DWG. NO.: 167-XXXXXXXXXX
UNIT: mm		DR: N. Boon	REV.: 1.0
SCALE: NTS	SHEET: 2/2	DATE: 04-Feb-2016	

Product Specification
 Material
 Insulator :Glass-Filled Thermoplastic PBT,UL94V-0 rates
 Contact :Brass or Phosphor Bronze
 Shell : Steel, 100u" Tin Over 50u" min Copper
 Clinch Nut: Brass, 100u" min Nickel Plated.
 Boardlock :Brass, 100u" min Tin Plated.

Electrical
 Contact Resistance :30 milliohms
 Max at 1 AMP DC.
 Insulation Resistance :1000
 megohms at 500 VDC
 Dielectric Withstanding Voltage :
 1000 VAC/rms 60Hz for 1 minute
 Current Rating :3 AMP
 Voltage Rating :250 VAC/rms 60Hz

Ordering Information

167 - XX X X X X X X X X X X
 a b c d e f g

- a. No. Of Pins: 09, 09 positions, 23, 23 positions
- b. Contact Type: 1: Female, 2: Male
- c. Contact Plating: 1: Gold flash, selective gold, 2: 30u" selective gold on contact
- d. Shell Plating: 1: Nickel(standard), 2: Tin, 3: Chromated
- e. Insulator Color: 1: Blue, 2: Black (Standard)
- f. Rveting Options: 1: Snap-in boardlock, 2: Press-in boardlock
- g. Flange Mounting Option: 1: #4-40 threaded hole with #4-40 unc screwlock installed, 2: #4-40 threaded hole with #4-40 unc screwlock bulk-packed, 3: #4-40 threaded hole