

# F RF Connectors



F Straight Male Crimp Type



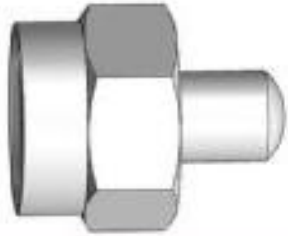
F Male Straight Clamp Type



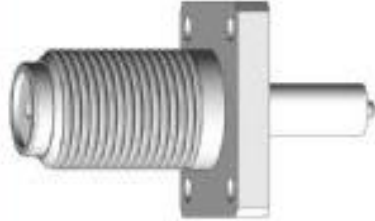
F Right Angle Female Crimp Type



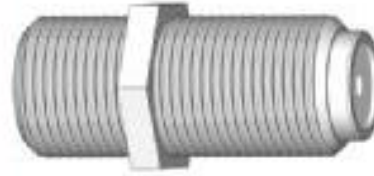
F Male Quick Crimp Type



F Male Straight Terminal Type



F Female Panel Mount Solder Pot Terminal 4 Holes Flange



F Female To Female Adaptor



F Female To Female Bulkhead Adaptor



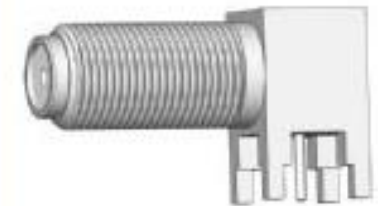
F Double Females To Female Type Adaptor



F Male To Male Adaptor

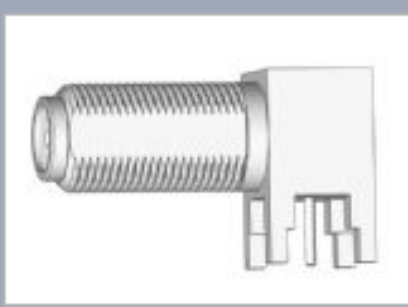


F Male To Female R/A Adaptor

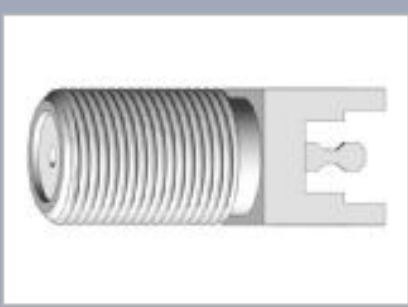


F Female R/A PCB Mount Type

# F RF Connectors



F Female Bulkhead R/A PCB Mount Type



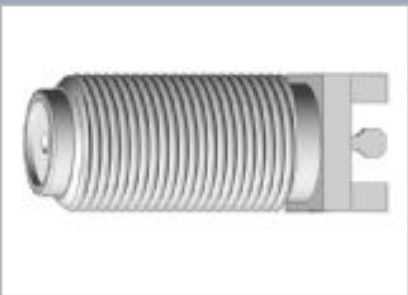
F Female Straight PCB Mount Type



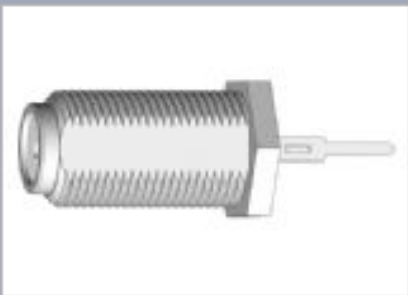
F Female Straight PCB Mount Type



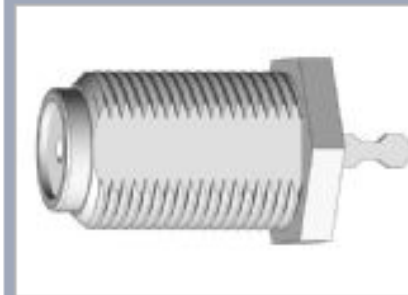
F Female Straight PCB Mount Type



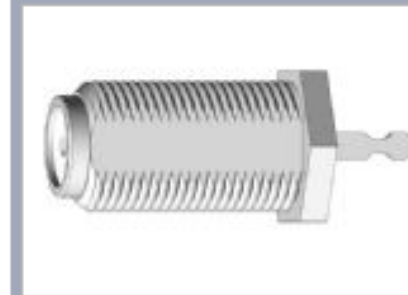
F Female Straight PCB Mount Type



F Female Bulkhead Solder Pot Terminal



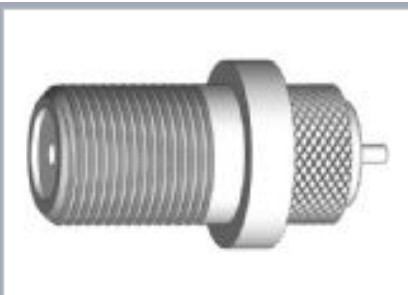
F Female Bulkhead Solder Pot Terminal



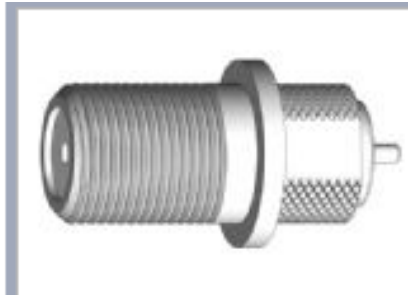
F Female Bulkhead Solder Pot Terminal



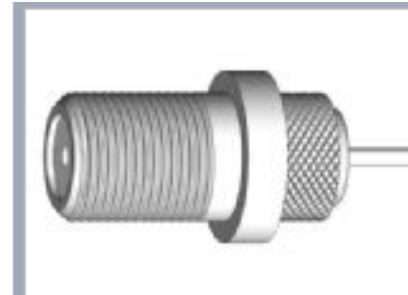
F Female Solder Pot Terminal



F Female Solder Pot Terminal



F Female Solder Pot Terminal



F Female Bulkhead Solder Pot Terminal