



NATURE SPACE WELLNESS

FEDERICO CANON

ARCHITECT DESIGNER PROJECT MANAGER

2023



-AXITECT-

NATURE SPACE WELLNESS

Since 2005, Building and Design Consultant for
Architecture, Interior Design and Furniture.
Specialized in sustainable development, systematization
and high-end design in the US and Colombia.

PUJ Architect, Project Management Master from UCAM Spain,
Cambridge International Diplomas in Bussines and Web
Development Studies.

Researcher Professor with Technical management of Design
Software CAD, BIM, Graphics, Illustration and PM.

“The World Most Extraordinary Homes”

Season 2 Part A: Ep.1 USA. BBC & NETFLIX Original Series.



CANAL HOUSE

By Marcio Kogan & studio mk27

CANAL HOUSE

By Marcio Kogan & Studio mk27

Project Management for the execution of Architectural
Concretes and Metallic Structures.
Architectural, Structural and MEP Coordination.

E&F Builders Corp. Miami Beach, FL.
US 2014-2015



PRAIRIE RESIDENCE
By Rene Gonzales Architects

Project Management for the execution of
Architectural Concretes and Metallic Structures.
Architectural, Structural and MEP Coordination.

“The World Most Extraordinary Homes”
Season 2 Part A: Ep.1 USA. BBC & NETFLIX Original
Series.

E&F Builders Corp. Miami Beach, FL. 2015-2014



CANAL HOUSE
By Marcio Kogan & Studio MK27

Project Management for the execution of
Architectural Concretes and Metallic Structures.
Architectural, Structural and MEP Coordination.

“The World Most Extraordinary Homes”
Season 2 Part A: Ep.1 USA. BBC & NETFLIX Original
Series.

E&F Builders Corp. Miami Beach, FL. 2015-2014



Espacios para la Recreación y el Deporte

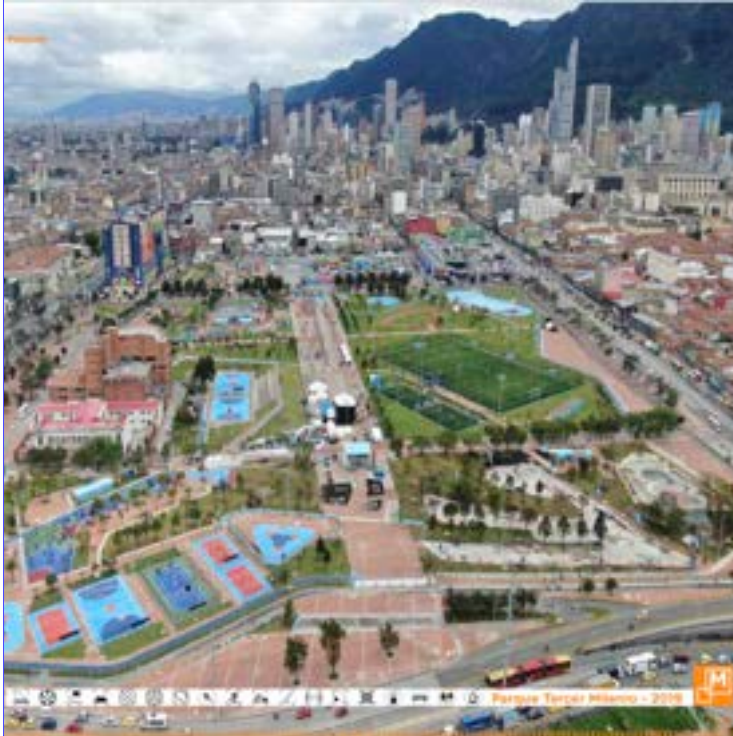
Manual para el diseño de parques en la ciudad de Bogotá



Design and Building Advisor. Bogotá, Colombia.

Architects team and MEP Coordination.
Design team coordinator to develop public parks architectural basic schemes and The Guide to Design Bogota's Parks for developers and contractors.
Presentation to participate in 4 International Design and Sustainable Development contests. Latin American Biennial of Public Space 2019, Green Solutions Awards 2019, Smart City Awards 2019 and OAS Inter-American Award on Innovation for Effective Public Management - 2019, being awarded on two of them.

District Institute of Recreation and Sports,
Bogotá, Colombia. 2019-2020



Design and Building Advisor. Bogotá, Colombia.

Achievements:
Casablanca Zonal Park, Honored Mention, Latin American Biennial of Public Space 2019, Project presentation for the District Institute of Recreation and Sports DIRS, Bogotá, Colombia.

Master Plan of Sports & Recreational Equipment for the City of Bogotá, District Users Choice Awards for the International Platform, Green Solutions Awards 2019. Project presentation for the District Institute of Recreation and Sports DIRS, Bogotá, Colombia.

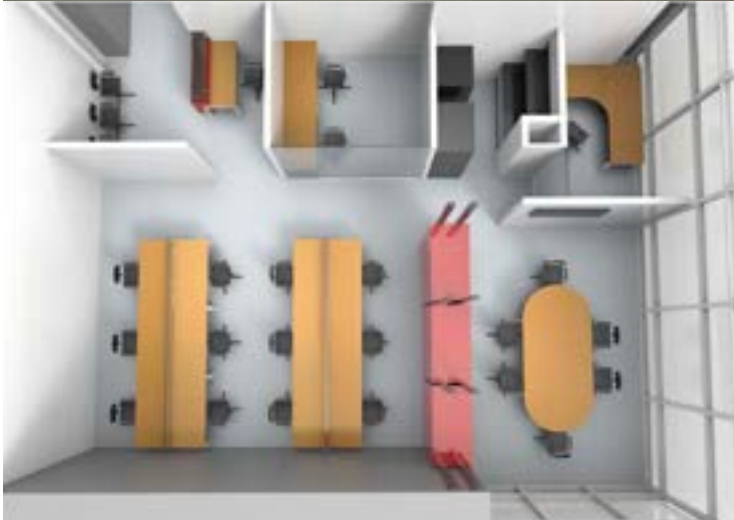
District Institute of Recreation and Sports, Bogotá, Colombia. 2019-2020



PROJECT MANAGEMENT AND DESIGN

Functioned as Project Manager involved in designing and building of Remodeling Residential Projects in Miami and Key Biscayne, as well of drafting, MEP coordination and pull building permits approvals. Managing clients and contractors as well to ensure coordination of all stages from design to final product. Following changes impact on scope, time and budget for each project.

MODERN DESIGN LAB Miami, Fl. 2015 - 2017



HUMAN PERSPECTIVE INTERNATIONAL
Headquarters for International US Company.

Design and Execution of Loft offices. Budget restriction, reuse of glass doors and partitions, Space optimization dividing spaces with storage cabinets and hidden storage on mezzanine.

North Point Building E Tower Bogota, Colombia 2018.



INTERIOR DESIGN REMODELING

Design and Execution of Loft Studio Apartment, Space optimization wall-type furniture design to hide the kitchen, pantry and laundry areas, Sliding Divisions to separate the bedroom and integrating spaces with a Rotating TV console.

Navarra Building Bogotá, Colombia 2018.



Played a vital role in the Project Management for 5 High End Residential Projects. Monitoring Changes with Impact on Scope, Time and Budget for each Project. Budget and presentation of Change Orders. Timely and effectively create RFI's. Generates schedules for labor payments and work progress. Coordination of Architectural Plans and MEP's. Quotes and Orders of Metal Structures throughout the country, coordinating manufacturing and workshop plans. Keep all stakeholders align and inform regarding progress for each project.

- 15 Star Island (Miami Beach)
- Canal House (Miami Beach)
- 180 Arvida Residence (Coral Gables)
- 6901 Granada Residence (Coral Gables)
- Zangrillo Residence (Miami Beach)
- Prairie Residence (Miami Beach)

E&F Builders Corp. Miami Beach, FL. 2014-2015



NEW HYUNDAI DEALERSHIP HOMESTEAD, FL.
REMOTE MANAGEMENT FOR METAL STRUCTURE PROJECT

Coordination of Architectural and Structural Design to build the Metallic Structure, Review order and approval of workshop plans to manufacture all the necessary elements to build it.

Remote execution 100% Online working.

E&F Builders Corp. Miami Beach, FL. 2017.



COUNTRY HOUSE FOR MARIA EMMA ESCALLON

Design Support, MEP Coordination,
Develop Construction Documents and Architectural
Model.

IOANNIS ALEXIOU ARCHITECTS Apulo, C01, 2007 - 2008.



COUNTRY HOUSE FOR ERIKA VON RODECK
Hacienda San Sebastian, Guaymaral. Colombia.

Design Support, Develop Construction Documents.

Architect Gaston Gamez, Bogotá, Colombia, 2004.



COOKIE MAN RETAIL STORE
DESIGN AND CONSTRUCTION

Design alluding to trains and clock mechanisms for a cookie factory. Copper fodder and rivets with an 18-foot-long collapsible furniture system that functions as a product counter with a moving train on top.

Design and Construction for design studio El Columpio Ltda.

El Dorado, International Airport,
Down Town Bogota, Calle 19.
Bogotá, Colombia 2005-2006.



AXI|TECT Design + Construction | Since 2018 | Inspiring Your Perceptions - Vision

www.axitect.com | +1 612 610 8400
+57 3 10 87 1500

MODULO DE DESCANSO
CONSTRUIDO PARA UNO
40

1. EL CONTEXTO

2. SUPLEMENTOS

3. LA PROPUESTA

Se accede por una puerta ventana de cierre hermético y silencioso. Cuenta con una litera que puede independizarse con una ventana deslizante, un fono para cada usuario, y una escalera que facilita el ingreso a la cabina superior.



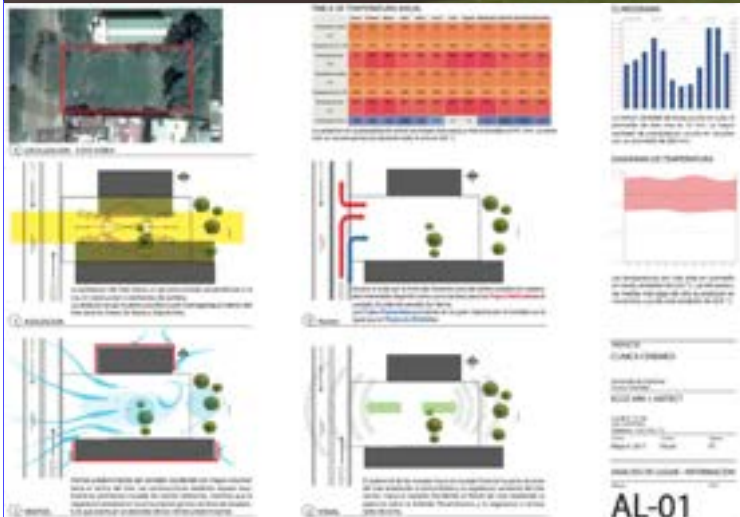
Imagen: 6/14/2019 12:47:00 AM

Render: 6/14/2019

SLEEPING BOX
Architectural and Industrial Design.

Resting Module for Quad competitor Cris Cajica #287, rest is a fundamental part of one of the toughest and most demanding sports competitions in the world, for which the module is conceived with as an insulated capsule to recharge energy.

DAKAR PERU 2019.



CENEMED CLINIC
 Architectural Preliminary Design
 28.815 Square Feet Construidos
 25.190 Square Feet Public Space and Landscape.

Preliminary Design for a First Level Health Provider Clinic, according to the technical regulatory provisions of the Colombian National Building Code.

Associate with ECO ARK, Santander de Quilichao, 2018.



SELF-SUSTAINABLE HOUSING MODULES Project Design and Business Model.

System of Self-sustaining Housing Modules for oil camps working crews.
The end of each modules makes room for 1-4 people or a working office.
Resistant to heavy traffic on uncovered land, capable to be mechanical assembly and disassembly, improving storage, durability and maintenance.
Solar panels for the electrical system. Water modules to store and treat used waters.

Independence Drilling S.A. , 2013.

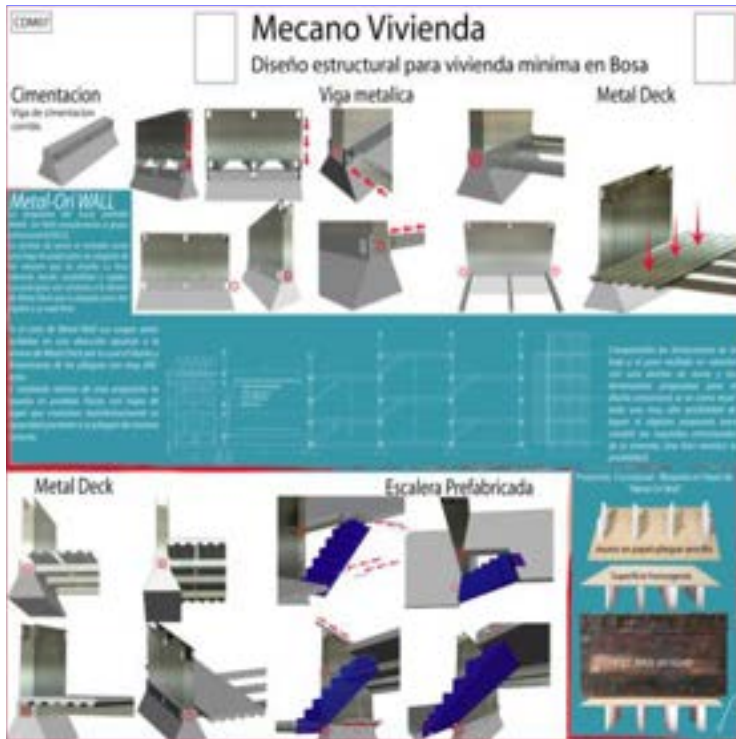


"WINGS OF WATER"
SELF-SUSTAINABLE SELF-PRODUCTIVE HOUSING MODULE

Architectural Design for Country House with principles and application of self-construction adobe architecture. Roof design with solar panels to collect and store rainwater, directly distributed by gravity to the hydraulic points around the house and to irrigate the Agroproductive Garden module.

Project Solution for the:
"Holcim Awards for Sustainable Construcción 2008-2009" Suiza, 2008,

Curití, Colombia, 2008.



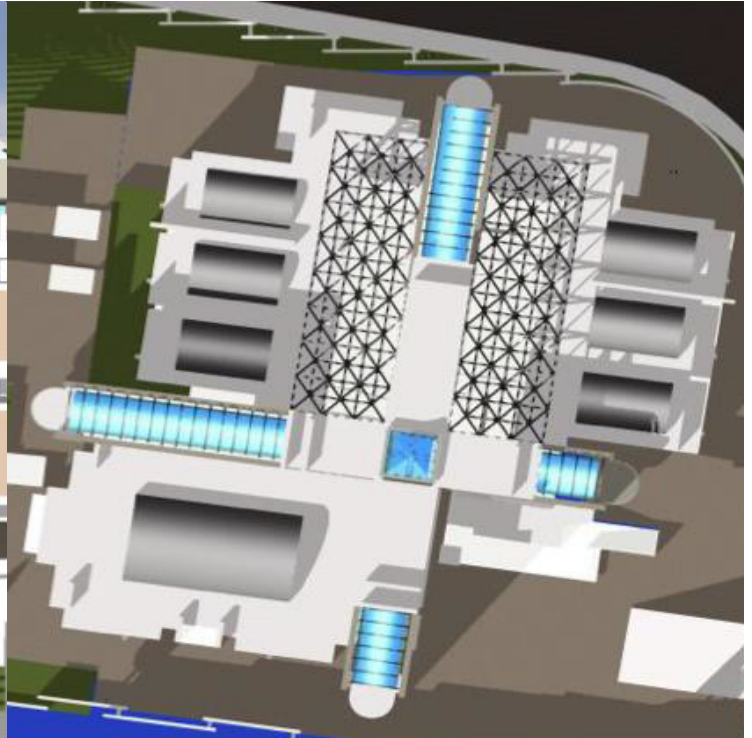
INTEGRAL MODULAR HOUSING PROJECT
Metallic structure with steel sheets functioned as load-bearing walls with Origami principles.

Togueter the housing modules creates blocks of residential and commercial mixed use, integrating green areas for common and private use for productive orchards.

Its spiral design allows the modules to grow up to 100% more of its original size without exceeding twice their height.

Recognitions:
Arquimet Contest for the Improvement of Popular Habitat. Special mention. ACESCO S.A. Bogota 2005.
Degree Thesis Outstanding Qualification 5/5.

Pontifical Javeriana University. Bogota 2005.

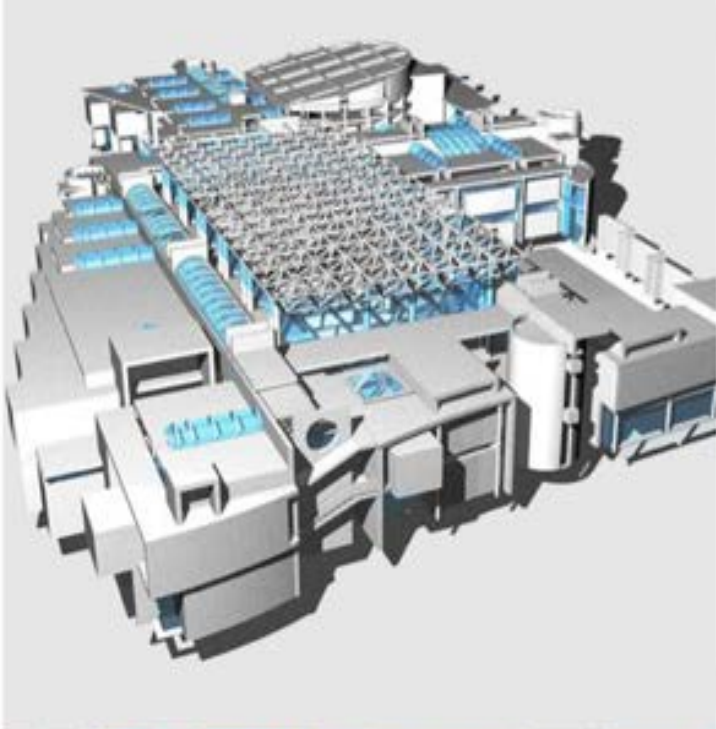


LAS ACACIAS SOCIAL DAY CARE
Project Manager, Architectural Design,

Design Contract with the City of Bogota after winning a National Architectural Preliminary Design Constes held by the Colombian Architect Society

Publication:
"The Work of the Javeriano Architect 1956 - 2008"
Javeriana University Pontifical Publishing House
Las Acacias Kinder Garden, Page 78.

Ioannis Alexiou Architects Bogotá, CO. 2005-2006.



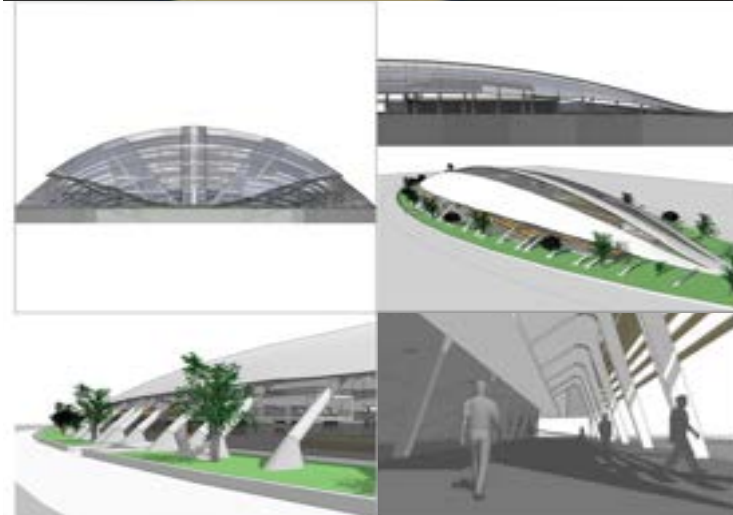
ARCHITECTURAL PRELIMINARY PROJECT COMPETITION
Kindergarten and Community Center.

Project Management and Design.

Community Center 80,730 SF
Kindergarten 13,000 SF

Recognition:
Winner in the National Architecture Competition by
the Colombian Society of Architects.

Ioannis Alexiou Architects Bogota, Colombia. 2005

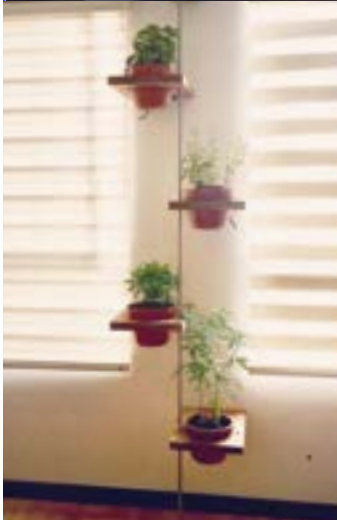


ARCHITECTURAL PRELIMINARY PROJECT COMPETITIONS
Colombian Society of Architects SCA

Design and Project Management.

IX South American Sports Games Medellín 2010.
Porvenir Community Development Center
San Cristobal Social Kindergarten

Ioannis Alexiou Architects, Colombia. 2005.



INTERIOR DESIGN AND FURNITURE

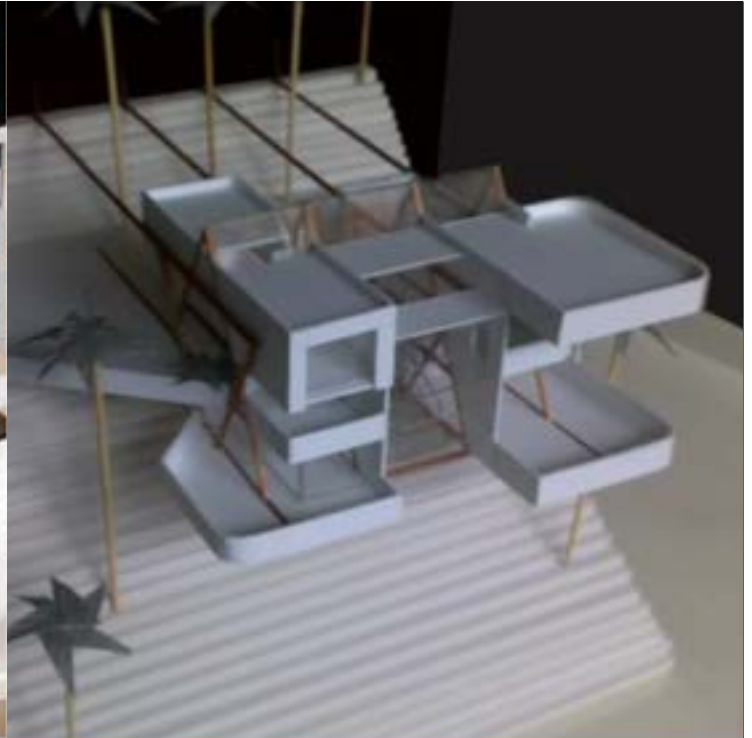
Ideas that transform spaces with modern and functional furniture.

Design Supply and Installation



3D MODELING AND RENDERING VISUALIZATION

United States, Colombia. 2006 - 2020.



ARCHITECTURAL MODELING AND MOCKUPS



- AXITECT -
NATURE SPACE WELLNESS

CONTACT:

F E D E R I C O C A N O N

fd@axitect.com

+1 612 600 0290

www.axitect.com