

3040
Riverview St.
Oakville





Contents

Introduction	3
Property Images	4
Property Details	8
Floor Plans	13
Community Map	15

WELCOME TO

3040

Riverview St.

Oakville

REFINED LIVING STEPS FROM THE SHORELINE

An exceptional, fully renovated residence nestled in one of Oakville's most desirable enclaves. Thoughtfully reimagined with timeless design and modern sophistication, this 4-bedroom, 4-bathroom home delivers the perfect balance of elegance and function for discerning homeowners.

Set on a tranquil, tree-lined street just minutes from the waterfront, parks, vibrant shops, and fine dining, this home is a rare offering in the coveted Bronte West community.

See virtual tour and videos on 3040Riverview.com









PARTICULARS of this property

Possession Date | Immediate / TBA

Taxes | \$5,937 (2024)

LOT | 42.72 x132.80 x50.87 x105.17 ft

Sq. Footage | 1,870 sq ft (MPAC)
+ 1,022 Basement

Year Built | 1986

Bedrooms | 4

Washrooms | 4

Garage | 2 Cars - 480 sq ft

Driveway | 4 Cars - Private

Mechanics | Forced Air, CAC

Heat Source | Gas

Extras:

Refrigerator

Stove & Oven

Range Hood

Dishwasher

Washer & Dryer

All Light Fixtures

Hot Water Heater

Water Softener

Play House & Swing

Elementary Schools:

Eastview Public School

St. Dominic Catholic School

Secondary Schools:

Thomas A Blakelock High School

Thomas A Blakelock (French)

St. Thomas Aquinas Catholic School

Private Schools:

Appleby College (Gr7-12 Coed)

Chisholm Academy (Gr7-12 Coed)

St. Mildred's-Lightbourn School
(JK-Gr12 Girls)



Scan QR code to
see video home
tour and more!

Exterior

Classic red brick façade /
Front porch framed by mature landscaping /
Custom-built play structure /

Interior

Spacious open-concept main floor /
Newly renovated and remodelled /
Ample pot lighting /
Stylish contemporary colour palette /

Flooring

Plank Engineered flooring on Main /
Hardwood flooring on Second /
Raised Laminate flooring in Basement /

Kitchen

Custom two-tone cabinetry /
Quartz kitchen countertop /
Stainless Steel Appliances /

Bathrooms

Spa-inspired bathroom /
Frameless glass shower /
Matte-black fixtures /
Premium porcelain tiles /

Electrical & HVAC-P

Water softner system /
Rinnai Tankless water heater /
High Efficiency Heat Pump with Gas Furnace /
200 AMP Electrical panel /

All information and statements contained herein, provided by RE/MAX Hallmark York Group Realty Ltd. regarding property for sale is from sources deemed reliable and assumed correct, but no warranty or representation is made as to the accuracy thereof and same is submitted subject to errors, omissions, changes in price, rental or other conditions, prior sale or withdrawal without notice.

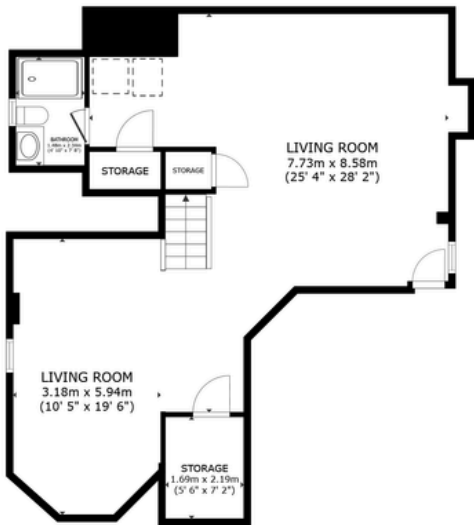








Floor Plans



BASEMENT



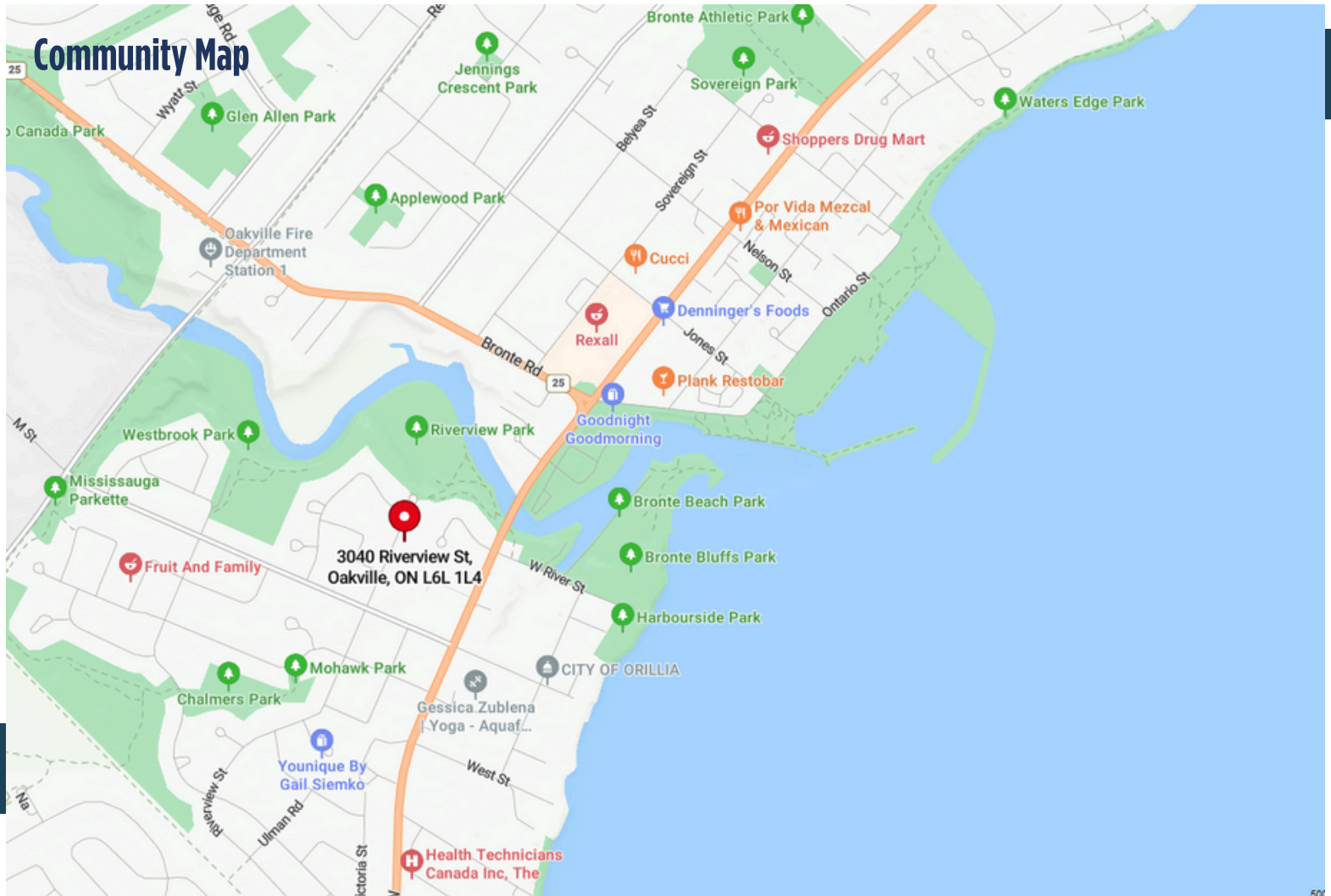
MAIN FLOOR



2ND FLOOR

SIZES AND DIMENSIONS ARE APPROXIMATE, ACTUAL MAY VARY.

Community Map





3040Riverview.com

