

WHITE PINES

BRACEBRIDGE

mattamyHOMES

THE BALSAM

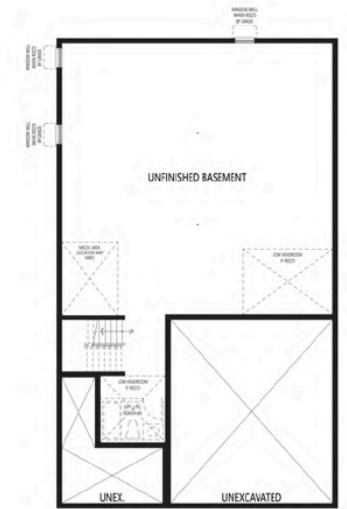
1,533 SQ.FT.



CRAFTSMAN (CR)



GROUND FLOOR

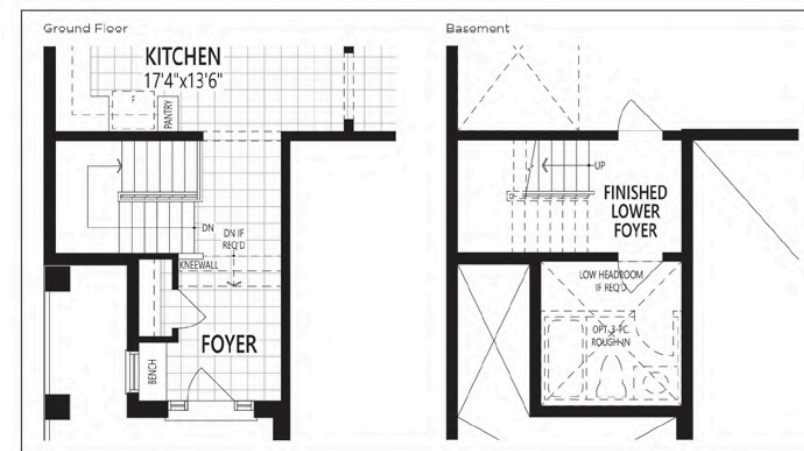


BASEMENT

ARCHITECT'S CHOICE OPTIONS

GROUND FLOOR OPTIONS

- 1 Next Step
(Additional 37 Sq.Ft.)



- 2 Gas Fireplace



- 4 Super Shower



ADDITIONAL ARCHITECT'S CHOICE OPTIONS AVAILABLE FOR THIS HOME:

GROUND FLOOR CHOICES

- 9' CEILING PACKAGE
 - Approx. 12" higher ceilings
 - Taller upper kitchen cabinets
 - Taller Ground Floor windows and patio sliding doors (where applicable)
 - Transom over front and Garden Doors (where applicable)
 - Approx. 8' high interior arches (where applicable)
 - Stair configuration and/or minor design changes may be required to accommodate

BASEMENT CHOICES

- REC. ROOM READY PACKAGE
 - Rough-in drains in predetermined location for future 3-pc bathroom
 - Deeper basement windows (where applicable)

D50A All illustrations are artist's concept. Specifications, terms and conditions are subject to change without notice. These floor plans and room dimensions apply to the 'Craftsman' elevation of this model type. Actual usable floor space may vary from the stated floor area. Plans and room dimensions may vary according to elevation. Plan may be built as the mirror image. "Quiet wall" (where shown) means a wall in which additional insulation has been installed. This will assist in reducing, but not eliminating, ambient sound from adjoining rooms and mechanical systems. The extent of the reduction will vary depending upon various factors including, without limitation, the presence and extent of mechanical systems located in the wall. Please consult your sales representative. E&O.E. April 2019. Copyright 2019 - Mattamy Homes Limited.