

Introduction

Ideology is often congealed to a left-right spectrum, often with clumps on the “left”, “middle”, and “right”. In practice, ideology is more nuanced than that. For our analysis, we chose to create categories for “old” polices and “new” policies.

New Policies

New issues tend to be more social in nature and have to do with culture and regulation.

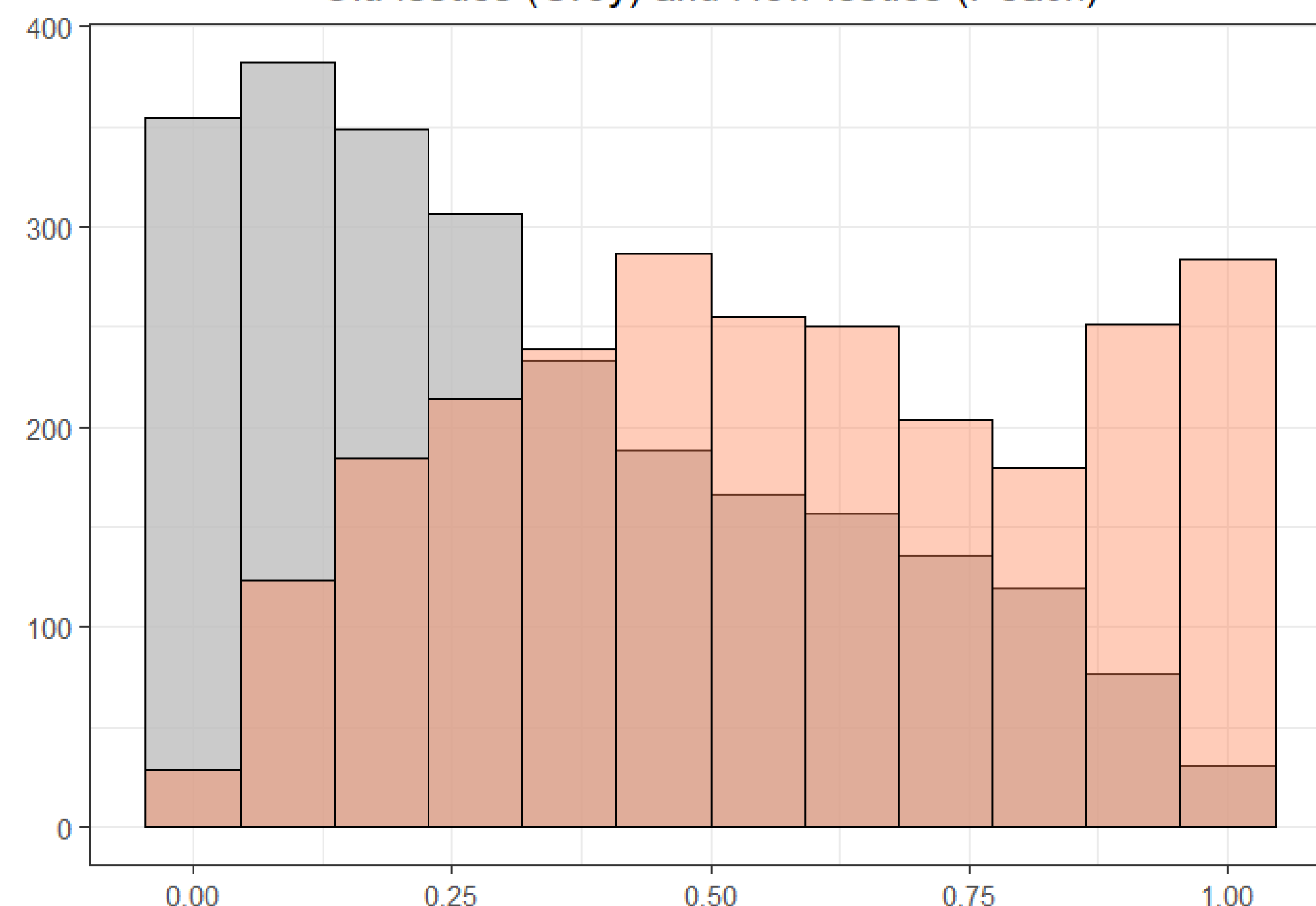
- Abortion (new as of Dobbs)
- Police race training
- Border wall
- Trans rights
- Election security
- Vaccination mandates
- Reparations
- Removing racist street names and monuments
- Parent approval of curriculum
- Speech on social media
- Ukraine conflict

Old Policies

Old issues tend to be more economic in nature and have more to do with government spending.

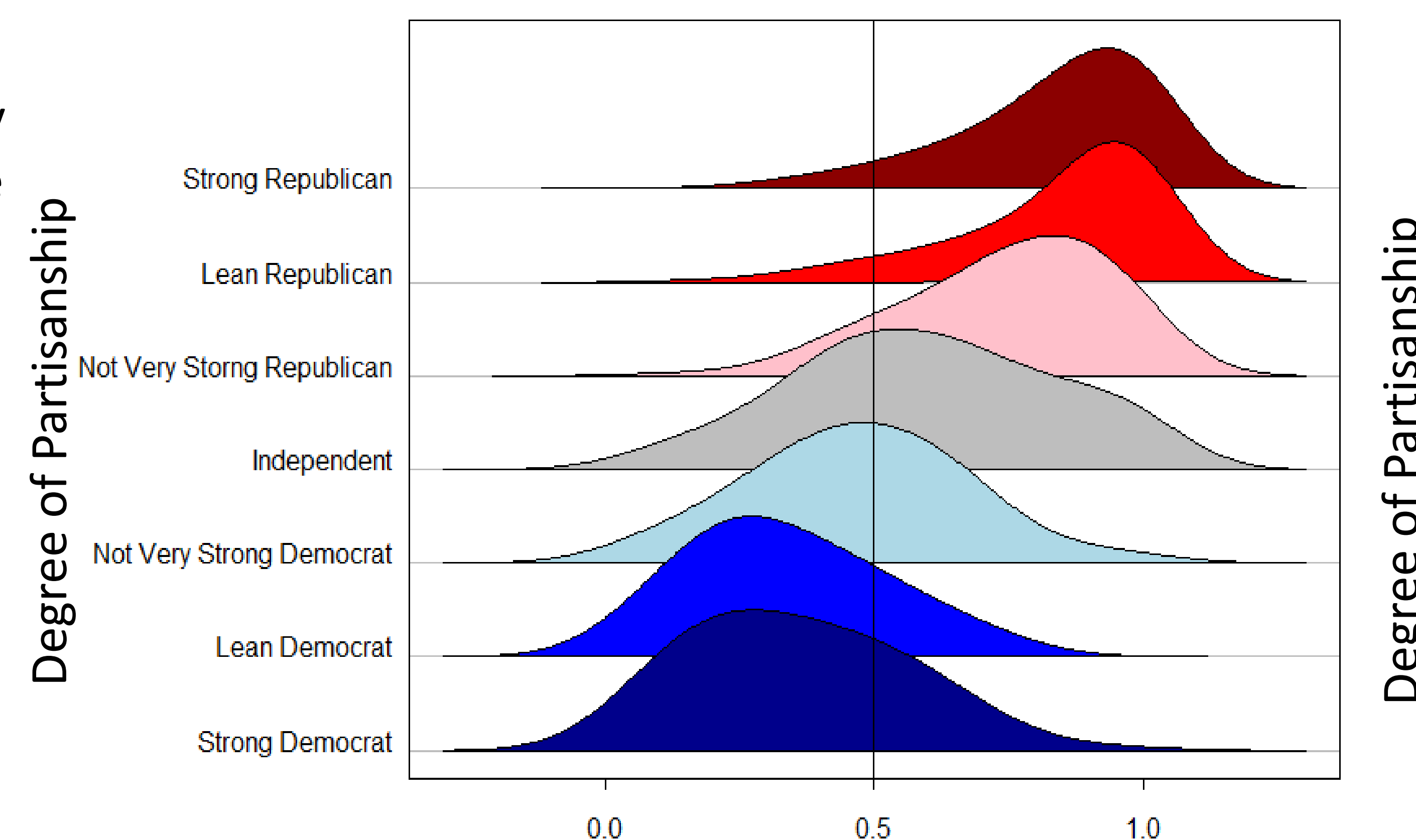
- Death penalty
- Marijuana
- Gun control
- Environment
- Affirmative action
- Taxes
- Education spending
- Healthcare spending
- Defense spending
- Welfare spending
- Trade

Old Issues (Grey) and New Issues (Peach)

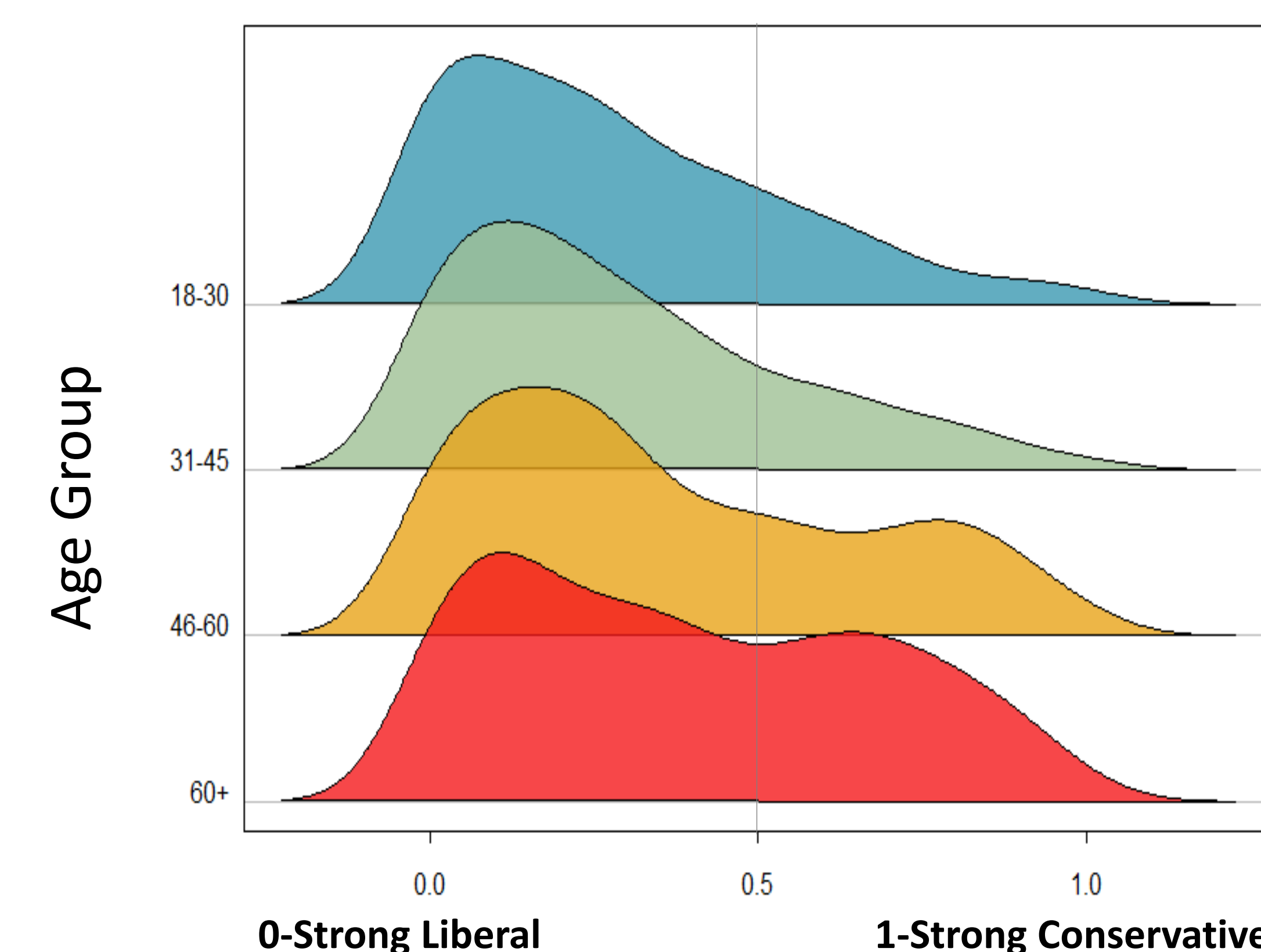
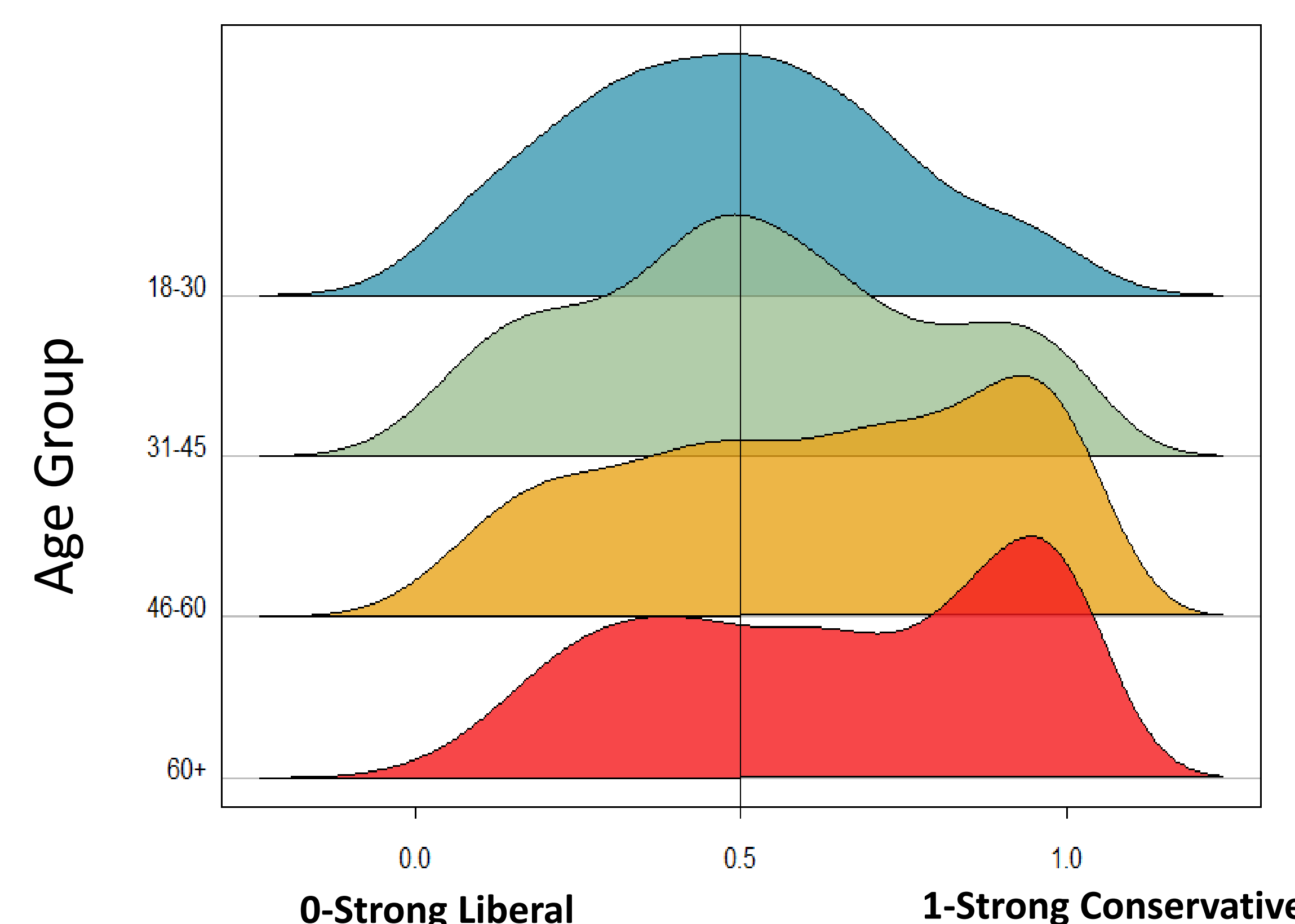
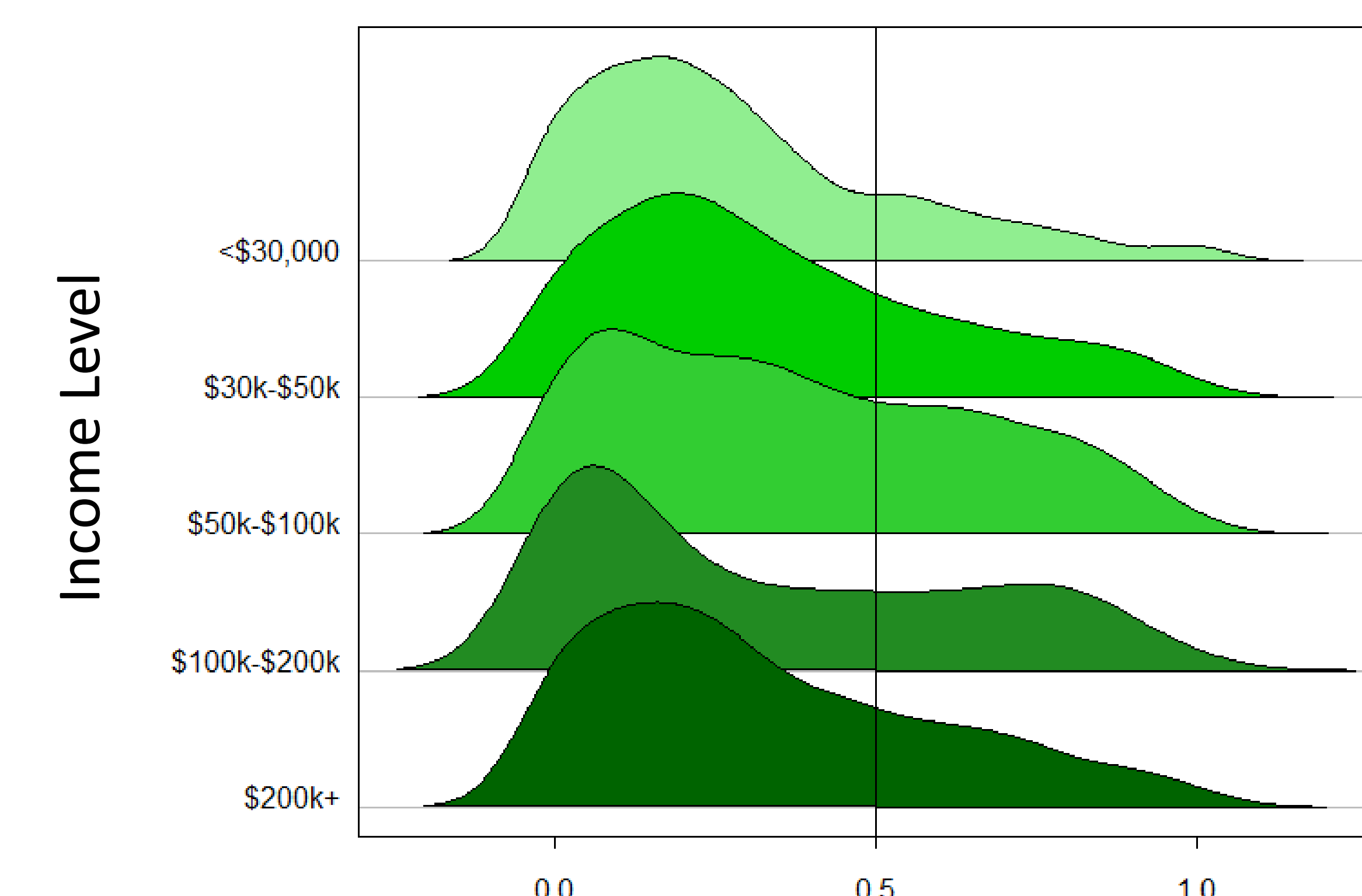
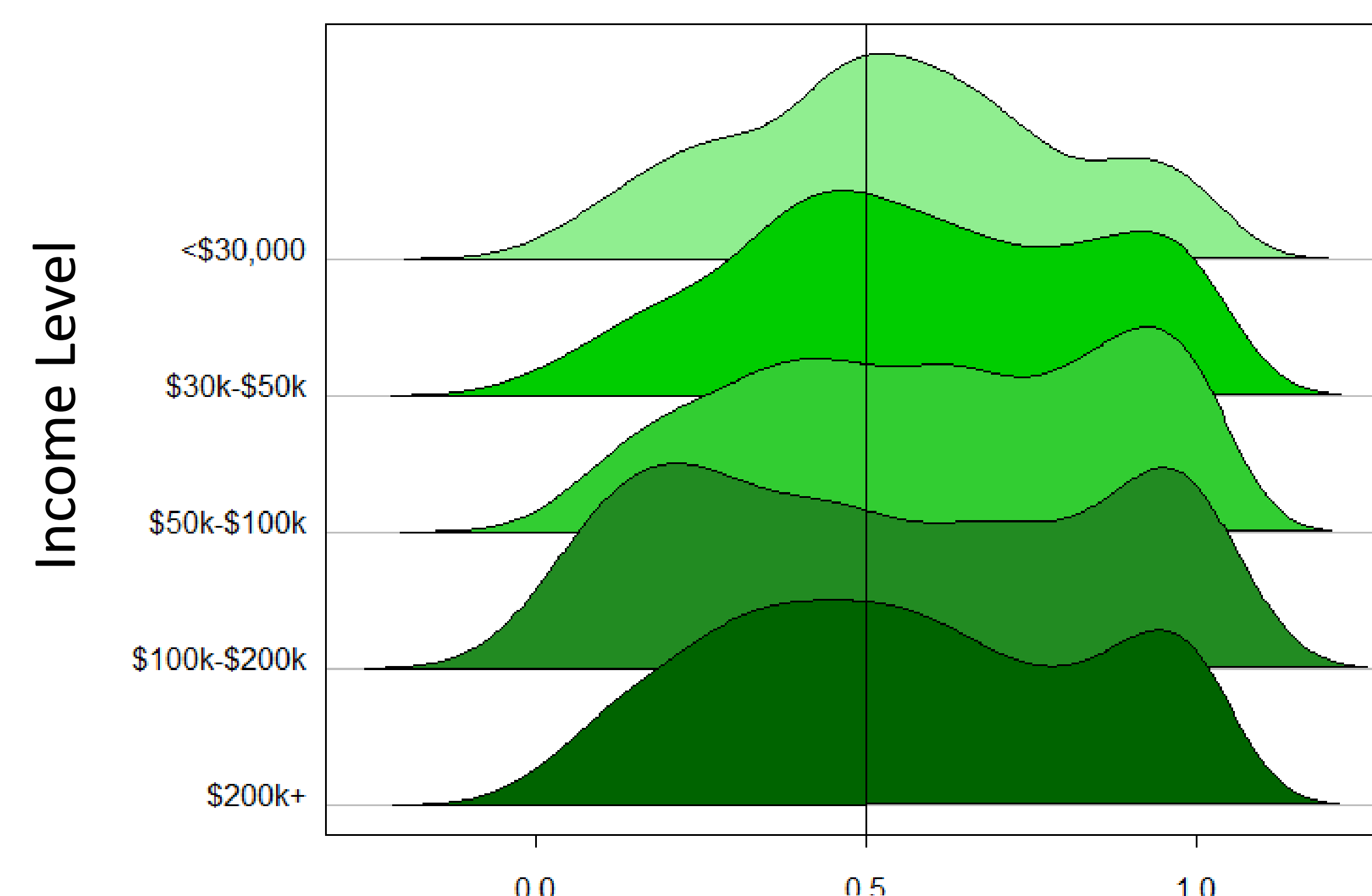
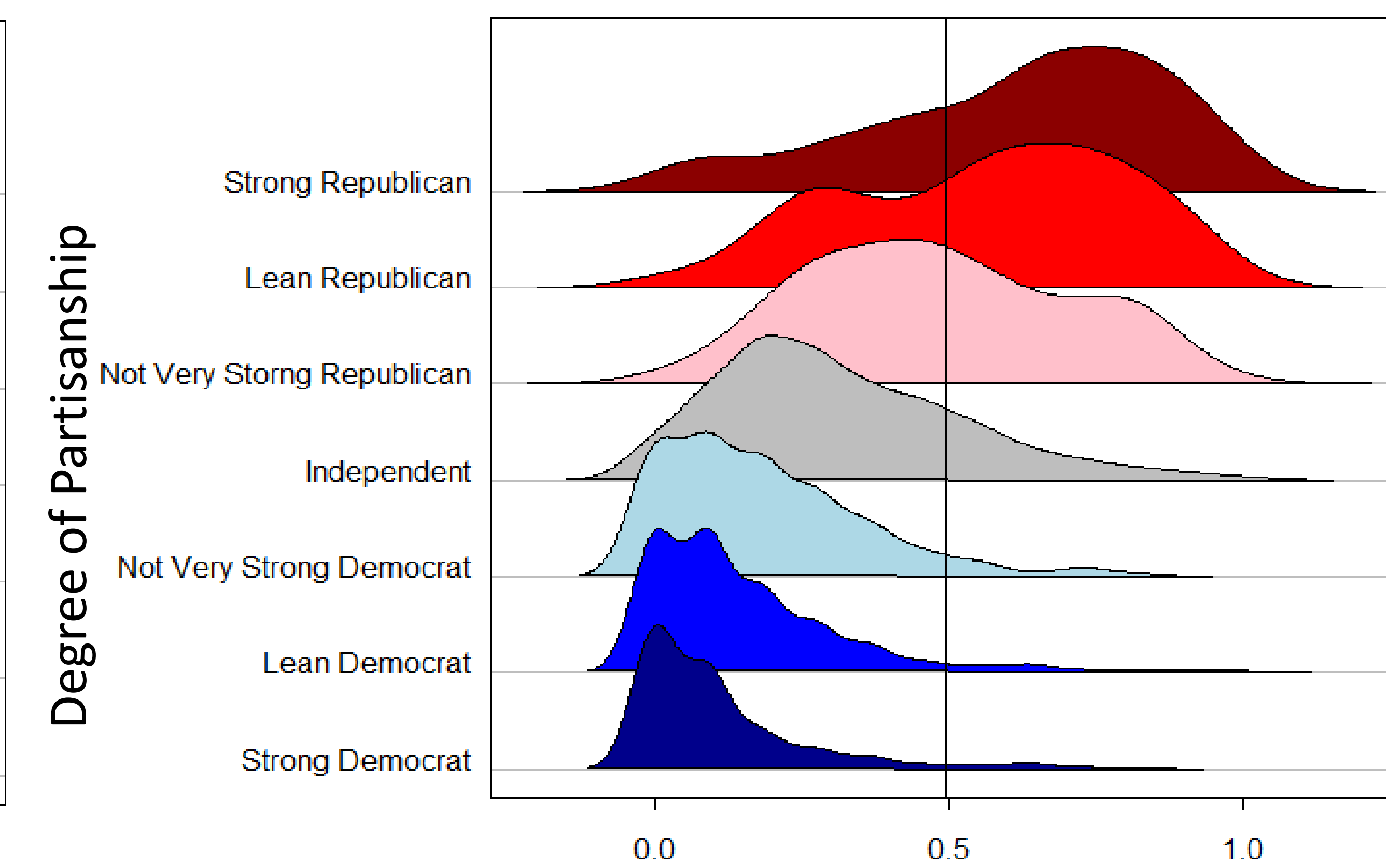


Source: YouGov Nationally Representative Survey

New Issues Ideology



Old Issues Ideology



0-Strong Liberal

1-Strong Conservative

0-Strong Liberal

1-Strong Conservative