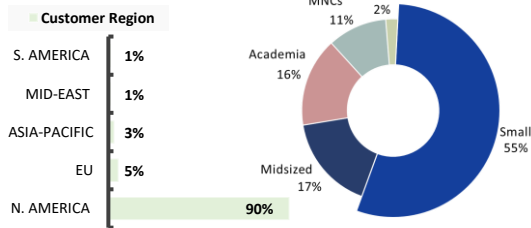




OUR CUSTOMERS

Global collaborations

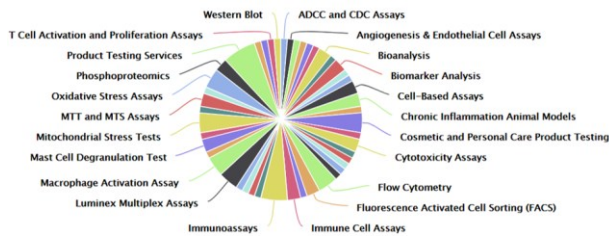


PROJECT EXAMPLES



Rated as a Top Performer

Recognized by Science Exchange – trusted by global innovators



Assays Performed at Science Exchanges in 2024



ABOUT US

- ❖ **State-of-the-Art Facility**
5000 ft² lab space and cutting-edge platforms
- ❖ **Well-Trained Scientists**
90% advanced degrees
- ❖ **Decades of Extensive Experience**
Immunology, oncology, spatial-omics, CLIA, bioanalysis
- ❖ **Well-Established Customer Base**
Pharma, biotech, startups and CLIA labs
- ❖ **Kit Production, Fulfillment & Distribution**
ISO9001 and ISO13485 certified



CLIENT TESTIMONIES

“We very much appreciate your **flexibility** to work with us and allowed quick assessment of antibodies. I also want to express our appreciation for your weekly data communication. It was **neat, clear, and transparent**. Thank you for your partnership.”

– Principal Investigator, BMS

“Harris and his team did a great job with my immune cell assays. **They always respond quickly and go above and beyond with data delivery**. I will certainly work with them again.”

– Director, L’Oreal

“I was very happy with Axela for my FACS project. They were **very responsive and adaptable** to what turned out to be a more challenging project than I had originally anticipated, with quick response times to emails and **clearly written reports** on ongoing progress.”

– Principal Scientist, Gilead



Axela Biosciences Inc. is a trusted New Jersey CRO, specializing in drug discovery biology, translational development, bioanalysis and CLIA testing to **ACCELERATE** the development of novel therapeutics and diagnostic tests.



Discovery Biology & Translational Development



Biomarker Discovery, Validation & CLIA Testing



Primary Immune Cells & Testing Kit Production



BioMed Consulting

Trusted by Customers and Partners

Customers
200+

Projects
500+

Patents
10+

Service Since
2014

Years of Combined Experience
80+



We can be reached at



Partnership to Accelerate Innovations

Axela Biosciences Inc.

622 NJ-10, Suite 18, Whippany, NJ 07981 USA

1-800-868-0176

info@AxelaBio.com

www.AxelaBio.com

Reliable Partnership

- ❖ Customized experimental design
- ❖ Quick turnaround time
- ❖ Competitive pricing
- ❖ Timely and transparent communication
- ❖ Strict IP protection and confidentiality
- ❖ Great flexibility for collaborations
- ❖ Fostering long-term relationships
- ❖ Convenient location in central NJ





OUR PLATFORMS



NanoString GeoMx DSP
Spatial Biology



NanoString nCounter Protein
and Gene Profiling



NeoPATH Pro
Autostainer



SLIDEVIEW™ VS200
Whole Slide Imaging Scanner



Invitrogen EVOS FL Auto Live Cell
Imaging System



IncuCyte Zoom Live Cell
Imaging System



CytoFLEX S Multiparameter
Flow Cytometry



ProteinSimple Simple Western
and Capillary-Based Immunoassay



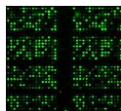
MSD QuickPlex SQ 120
Immunoassay Analyzer



Luminex-200 and FLEXMAP 3D
Multiplex Immunoassay



O-link Proteomics System



Forward and Reverse
Phase Protein Arrays



Tecan Spark
Multimode Microplate Reader



QuantStudio Real-Time PCR
System



DISCOVERY BIOLOGY & TRANSLATIONAL DEVELOPMENT

Discovery Biology & *In Vitro* Pharmacology
MOA Studies
High-throughput and High-Content Screening
Spatial Proteomics & Genomics
Cancer Cell Profiling
Tumor-immune 3D Culture and Organoids
In Vitro, *Ex Vivo*, 3D Culture Models

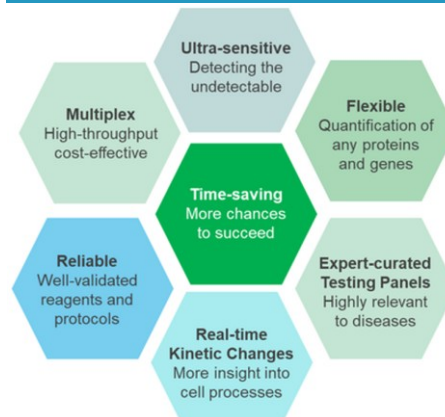
IN VITRO TOXICOLOGY & ADA

In Vitro Toxicity (Cytotoxicity, Immunotoxicity,
Hematotoxicity, Genotoxicity, Neurotoxicity; under
OECD and ICH guidelines)
ADA screening and functional assays

PLATFORMS

High-dimensional Flow Cytometry
Systematic Immuno-monitoring
IHC/IF/ISH, Multiplex Staining, & Spatial-omics Services
Ultrasensitive and Multiplex Immunoassays
Multiplex microRNA/mRNA Profiling
Live Cell Imaging
Gene Microarrays/QuantiGene
FPPA & RPPA

TECHNICAL ADVANTAGES



Accelerating Life Science Innovation, Drug Discovery & Translational Development

DIAGNOSTIC SERVICES & CLIA TESTING

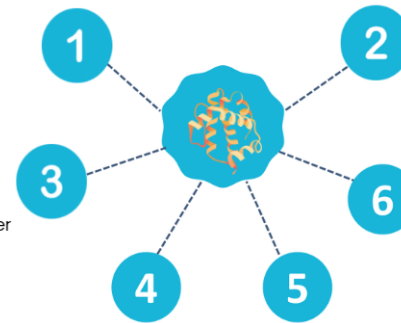
Biomarker Discovery, Validation and Quantitation
IHC/IF/ISH, Multiplex Staining & Digital Imaging
LDT & CDx Development
Kit Production, Fulfillment and Distribution

SUPPORT VARIOUS MODALITIES

Small Molecules
Antibodies & ADCs
PROTACs and Molecular Glues
LNPs, and Cell & Gene Therapies

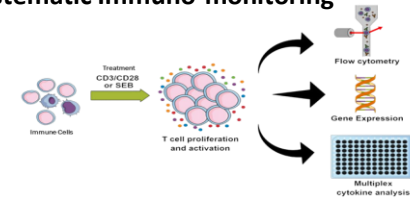
SUPPORT VARIOUS INDICATIONS

Cancers (Solid & Hematopoietic tumors)
Immunology & Inflammation
Autoimmune, Asthma, Allergy
Neurodegenerative diseases, etc



FEATURED PLATFORMS

Systematic Immuno-monitoring



Comprehensive IHC/IF/ISH, Multiplex Staining & Spatial-omics

