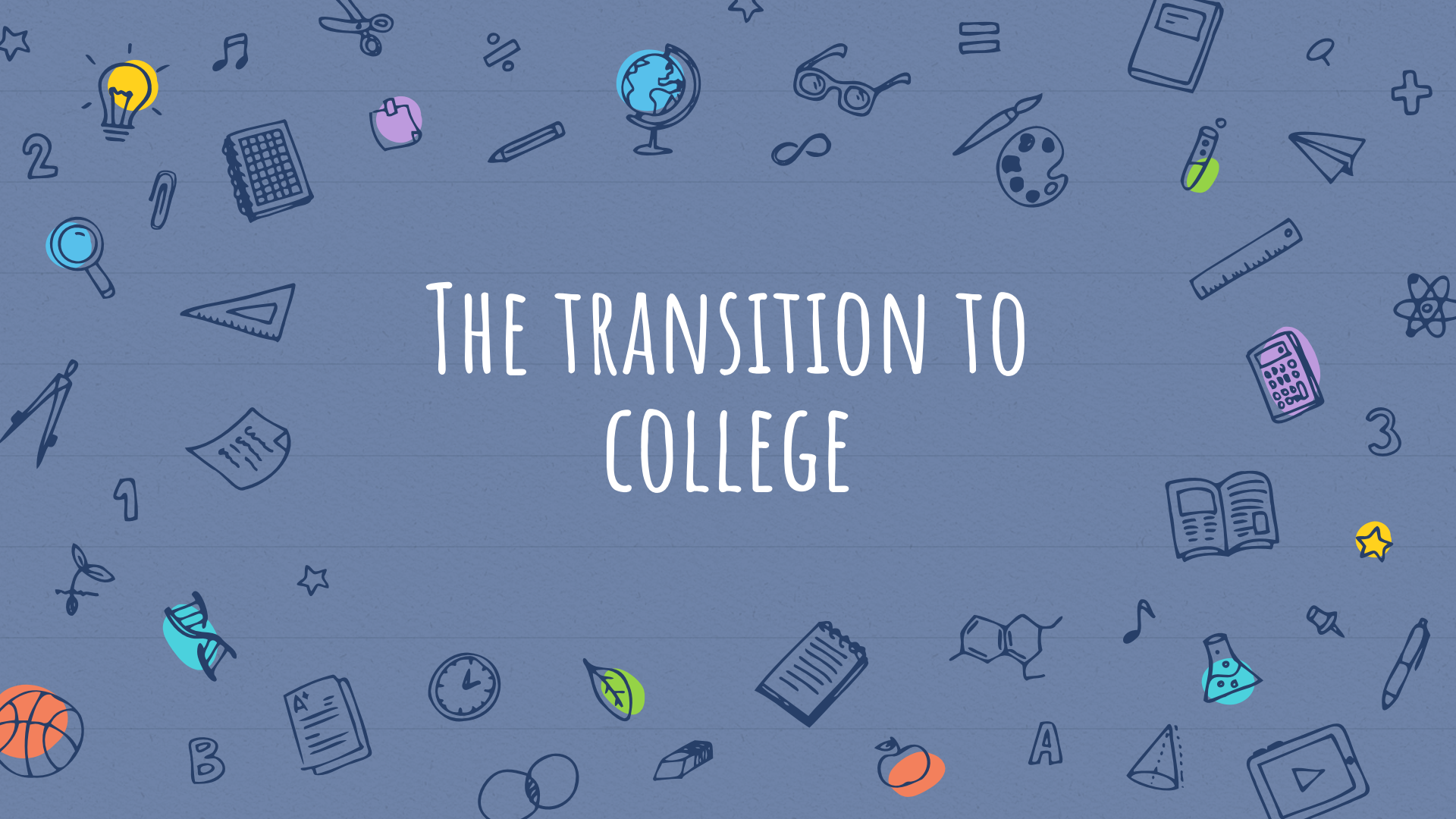
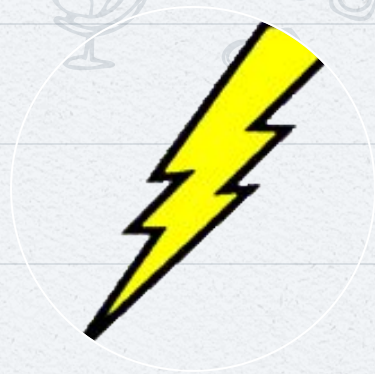


THE TRANSITION TO COLLEGE





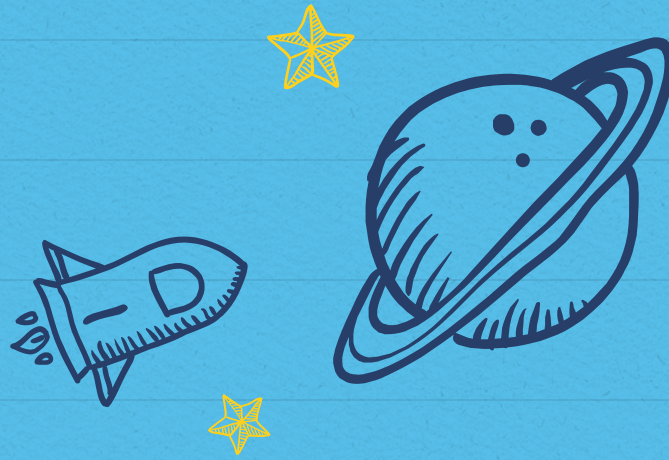
HELLO!

I am Julie Smith

Transition Specialist

I am Gretchen Stauder

High School Counselor



HIGH SCHOOL VS COLLEGE

DIFFERENCE IN THE LAW

HIGH SCHOOL

- Schools Responsibility
- LRE, quality, free
- Individualized Planning
- Related Services
- Transition Planning

COLLEGE

- Individual Responsibility
- Focus on Accommodations
- Focus on non-discrimination and undue hardship



PARENT/
SUPPORT
PERSON

Responsibility for CF Care

PROVIDING
& TEACHING



DEPENDING

MANAGING

ENGAGING

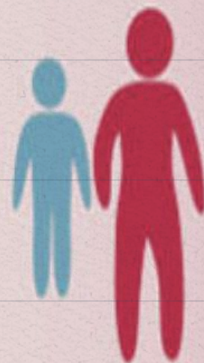
DELEGATING &
MONITORING

MANAGING

LEADING

ASSISTING

OWNING



SUPPORTING

PERSON
WITH CF

Early School Age
(Ages 6-9)

Late Elementary
& Middle School
(Ages 10-12)

Early High School
(Ages 13-15)

Late High School
(Ages 16-18)

Early Adulthood
(Ages 18-25)

DIFFERENCE IN REQUIREMENTS?

As a rule, No! But there are exceptions! Hold tight!

TESTING

- ✗ Since COVID, many schools are test optional.
- ✗ All students will test with their high school in April
- ✗ Tests will be digital
- ✗ Illinois is going from SAT to ACT!

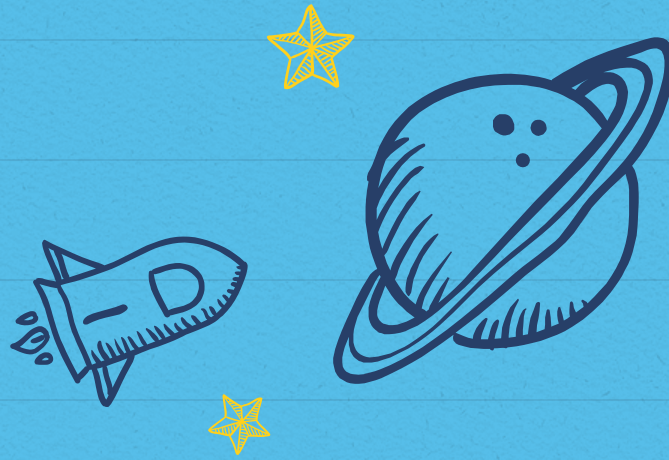


WHEN TYPICAL COLLEGE ISN'T THE RIGHT CHOICE

NON-LOCAL OPTIONS

- ✘ Chapel Haven - Connecticut
- ✘ College Internship Program - Multiple Locations
- ✘ Life Development Institute - Phoenix, AZ
- ✘ Minnesota Independence College & Community -
Richfield, Minnesota
- ✘ Reach Program - University of Iowa
- ✘ Riverview School GROW Program - Massachusetts





TYPES OF COLLEGE SERVICES

LEVELS OF SUPPORT

- ✘ Accommodations Only
 - ✘ Students arrange the support
 - ✘ Academic support is not centralized
- ✘ Comprehensive Programs
 - ✘ Separate Application/Possible Fee
 - ✘ Regular Scheduled Meetings
 - ✘ Certified Providers
- ✘ Specific Colleges for Students with Disabilities
 - ✘ Beacon College
 - ✘ Landmark College

ACCOMMODATIONS

- ✘ Structure for providing services
- ✘ Designated office in charge of making arrangements
- ✘ Tutoring may be available by LD Specialist or Peer/subject tutors supervised by director
- ✘ Learning specialist often coordinates services



SCHOOLS WITH FULL SERVICE PROGRAMS

- University of Arizona (SALT)
- University of Denver (LEP)
- University of Indianapolis (BUILD)
- Loras College (Enhanced)
- Lynn University (Institute for Achievement and Learning)
- Southern Illinois University (ACHIEVE Program)
- University of Wisconsin -Oshkosh (Project Success)



COLLEGES FOR STUDENTS ON THE AUTISM SPECTRUM

Aurora University - Pathways Program

Marquette - On Your Marq

Harper Community College - TAP

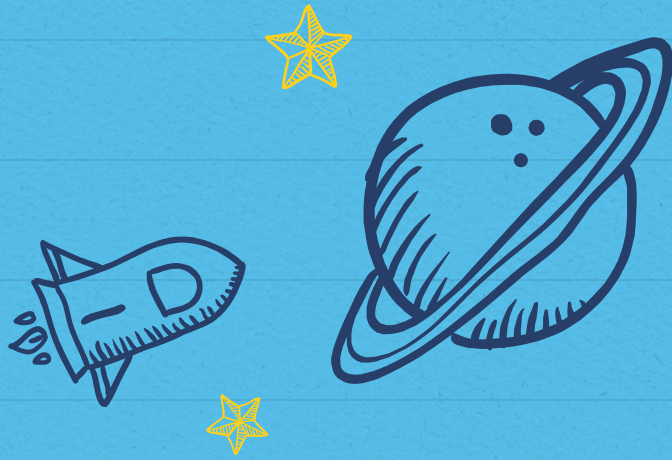
Southern Illinois University - ACHIEVE

Eastern Illinois - STEP

Loras College - ARCH

***Mansfield Hall - Madison, WI, Bend, OR





COLLEGE APPLICATION PROCESS

BEGINNING THE SEARCH



FACTORS:

- Size
- Location
- Majors/Programs
- Schools That Match the ACT/SAT and GPA

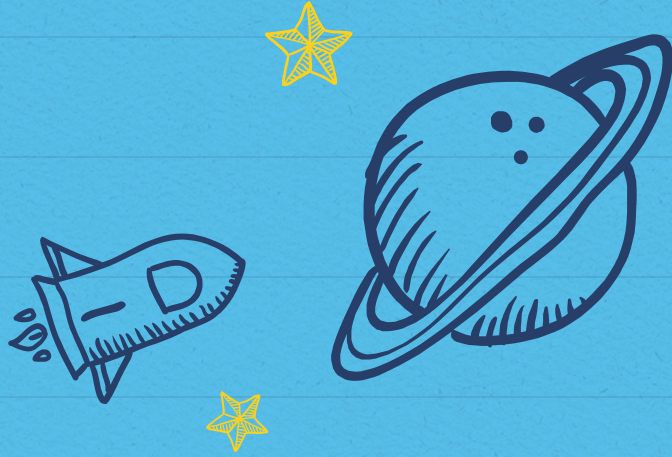
NARROWING THE SEARCH

- ✗ What is the best type of setting for the student?
 - ✗ Class size/Teacher ratio
- ✗ Academic Support available to ALL students
- ✗ Disability support - what is available and is the students willing to access the supports





APPLY TO COLLEGE FIRST,
APPLY TO DISABILITY SERVICES SECOND



COLLEGE DISABILITY SERVICES

DOCUMENTATION

- ✗ Student Self Report
- ✗ Documentation
 - ✗ IEP or 504
 - ✗ Psychoeducational Testing/File Reviews
 - ✗ Doctor's Notes
 - ✗ Summary of Performance
- ✗ Observation/Interaction



TYPICAL ACCOMMODATIONS IN THE COLLEGE ENVIRONMENT

- ✗ Digital Textbooks
- ✗ Assistive Technology
- ✗ Extended Test Time/Alternative Testing
- ✗ Note takers
- ✗ Quiet Test Room
- ✗ Reader for Exams
- ✗ Scribe
- ✗ Sign language interpreters
- ✗ Use of Calculator/Computer



ADVOCACY

Student must self identify, speak with professors,
request accommodations

Start working on this now!

- ✘ Email teachers
- ✘ Ask for accommodations
- ✘ Active participation in IEP Meetings



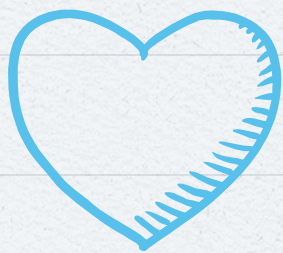
RESOURCES

CHOICES Website www.postsecondarychoices.org

- ✘ College Presentations
- ✘ College Search
- ✘ Resource Booklet



"PICKING A COLLEGE IS LIKE PICKING A SPOUSE.
YOU DON'T PICK THE "TOP RANKED" ONE, BECAUSE
THAT HAS NO MEANING. YOU PICK THE ONE WITH
THE PERSONALITY AND CHARACTER THAT
COMPLEMENTS YOUR OWN"



THANKS!

Any questions?