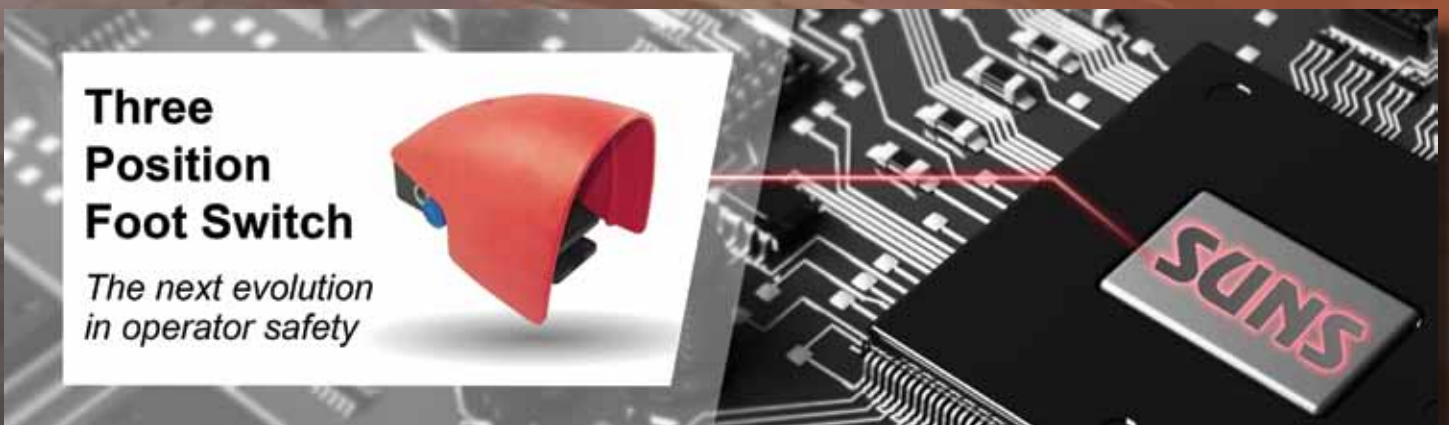




PRESS BRAKE SAFETY



SDKELI®

BLPS Laser Beams



Safety laser beams for optimal
press brake safeguarding.
Complete systems under \$5,000.



BLPS laser safety protective devices are developed for personal safety with hydraulic bending machines, according with Type4. The devices were certified by TUV, and obtained national invention patent with dynamic detection technology. The products are completely reached international advanced level of similar products.

BLPS laser safety protective device protect the areas near the punch of press brake, providing effective security protection for arms and fingers. When punch is moving and unexpected objects block the beams, the punch must stop immediately for personal safety. This method is most effective solution, both the personal safety and production efficiency.

LSPD safety laser scanner is based on two-dimensional optical scanning and ranging principle. It can provide a two-dimensional detecting zone with range of 15m maximum radius and 190° angle.

The detecting zone includes protective area and warning area. The maximum radius of protective area in 4m and the dark object with reflectivity low to 1.8% can be detected reliably in this area; the maximum radius of warning area is 15m and the object with the reflectivity more than 20% can be detected reliably in this area.

When a person or an object enters the detecting zone, the scanner sends an alarm signal or a stop signal. Users can set the detecting zone to any complex and irregular shape according to the site requirement.

LSPD Safety Laser Scanner



SUNS™ INTERNATIONAL, LLC

INDUSTRIAL SWITCHES



Three-Position Safety Foot Switches

(FS-61G-SP-S-1ZR Single Pedal)

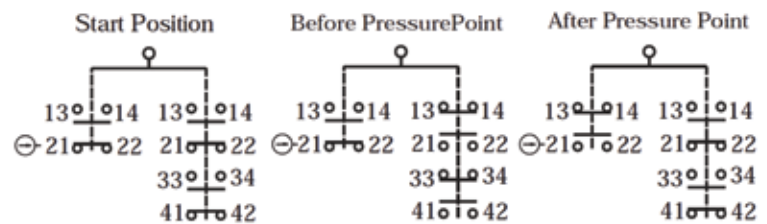
These foot switches are designed for some critical applications such as press brake machine control. These foot switches have at least one of the pedals with 3 positions, with a pressure point, to control dangerous movements. For press brake control as an example: press the pedal to lower down a press brake. It has 4 working contacts (2NC+2NO) to drive the movement and one safety switches (1 positive opening NC contact + 1NO) to stop the movement. Pressing the foot pedal, until the pressure point where resistance is noticeable.

This allows the changeover of the 2 working contacts and press is moving downward. When press harder beyond the pressure point, the 2 working contacts return to their first position and the positive opening safety contact is activated as redundant safety circuit in order to initiate immediately the dangerous movement. A restart of the machine is only possible after releasing the foot switch.

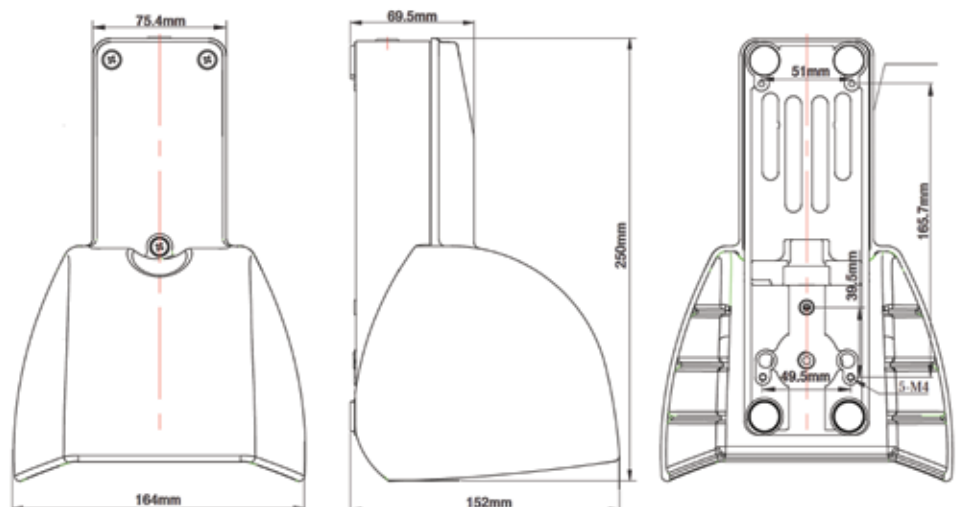
Specifications

Operating Frequency	60 ops/min
Insulation Resistance	>100MW@500V DC
Contact Resistance	<25mW
Rated Current/Voltage	10A/600V AC A600/AC15 Q300/DC13
Inrush Current	Complies with IEC947-5-1: AC15/DC13
Dielectric Strength	1000VAC for 1 min between current carrying parts 2500VAC for 1 min between non-current carrying parts
Service Life	Mechanically 1 x 10 ⁶ (operations) Electrically 5 x 10 ⁵ (operations)
Operating Temperature	-30~+80°C (-22~176°F)
Degree of Protection	IP65, NEMA type 2, 4, 13 (IP68, NEMA type 6, 6P available on request)

Actuation Sequence Diagram:



Dimensions (mm)

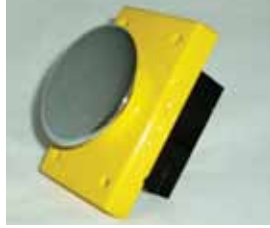




Two Hand Controls

Palm Buttons

Flat chrome plunger push button switch.



Ring Guards

Die cast from a high strength zinc alloy.



Emergency Stop with Lockout/Tagout Feature

With spring latch.



Operator Station

Standard and large enclosures.

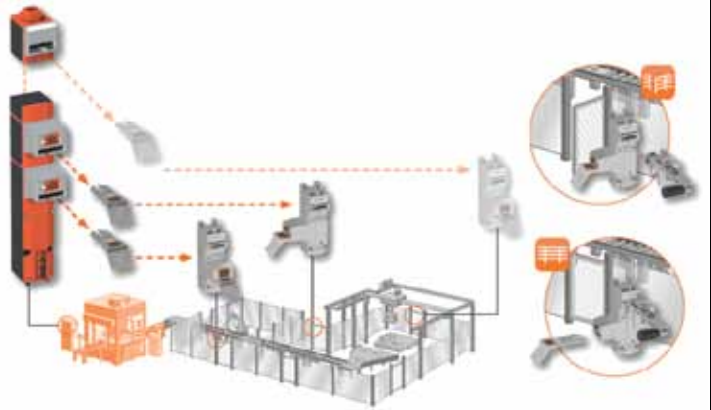


DOLD



Safety Interlocking System for Gurading Integrated Robotic Handling Work Cells

The key transfer system combines the advantages of none wiring, mechanical safety with electrical safety.



Two Hand Control Relay



Multifunction Safety Relay



Wireless Enabling Switch



Wireless Emergency Stop





Safety Curtains



SAFEGATE

Access control barriers with integrated Muting functions



EOS4

Compact Type 4 safety light curtains



ADMIRAL

Type 4 Safety Light curtains with integrated blanking functions

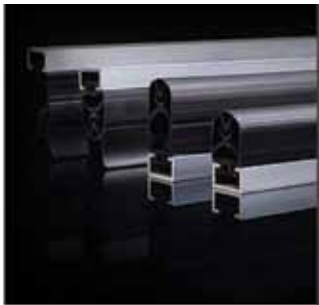


JANUS

Type 4 Safety Light curtains with integrated Muting functions



Safety Mats – Edges & Controllers



Safety Edges



Safety Bumpers



Safety Mats



Safety Relays



Non-Contact Safety Switch Solutions for the Physical Guarding Monitoring



AMX series – safety switch



AMXR-S safety switch with RFID coding



OPTO25 miniature safety switch



AMX5CK safety switch with personnel entry management

Machine Safeguarding Evaluations

If you are struggling with an effective means to properly safeguard your; machine operators, set up personnel, maintenance and cleaning staff, then please contact our office today!

With over thirty years of finding solutions to enhance work place safety from steel mills to food processors, our broad range of product knowledge and application experience will provide you with the extra set of eyes you have been looking for.

Contact us today to discuss your application.



P.O. Box 126 • 4112 Sheridan Rd., Kenosha, WI 53141
262.652.8660 • Fax: 262.652.1388
safetysensing@earthlink.net • www.safeworkplace.org