

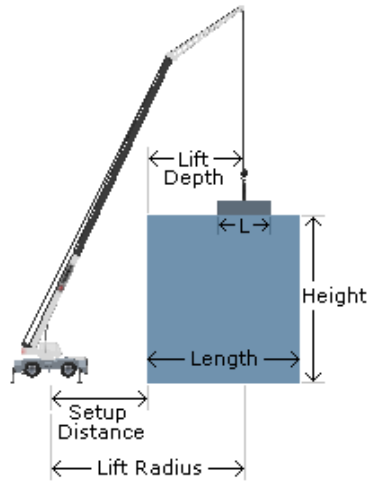
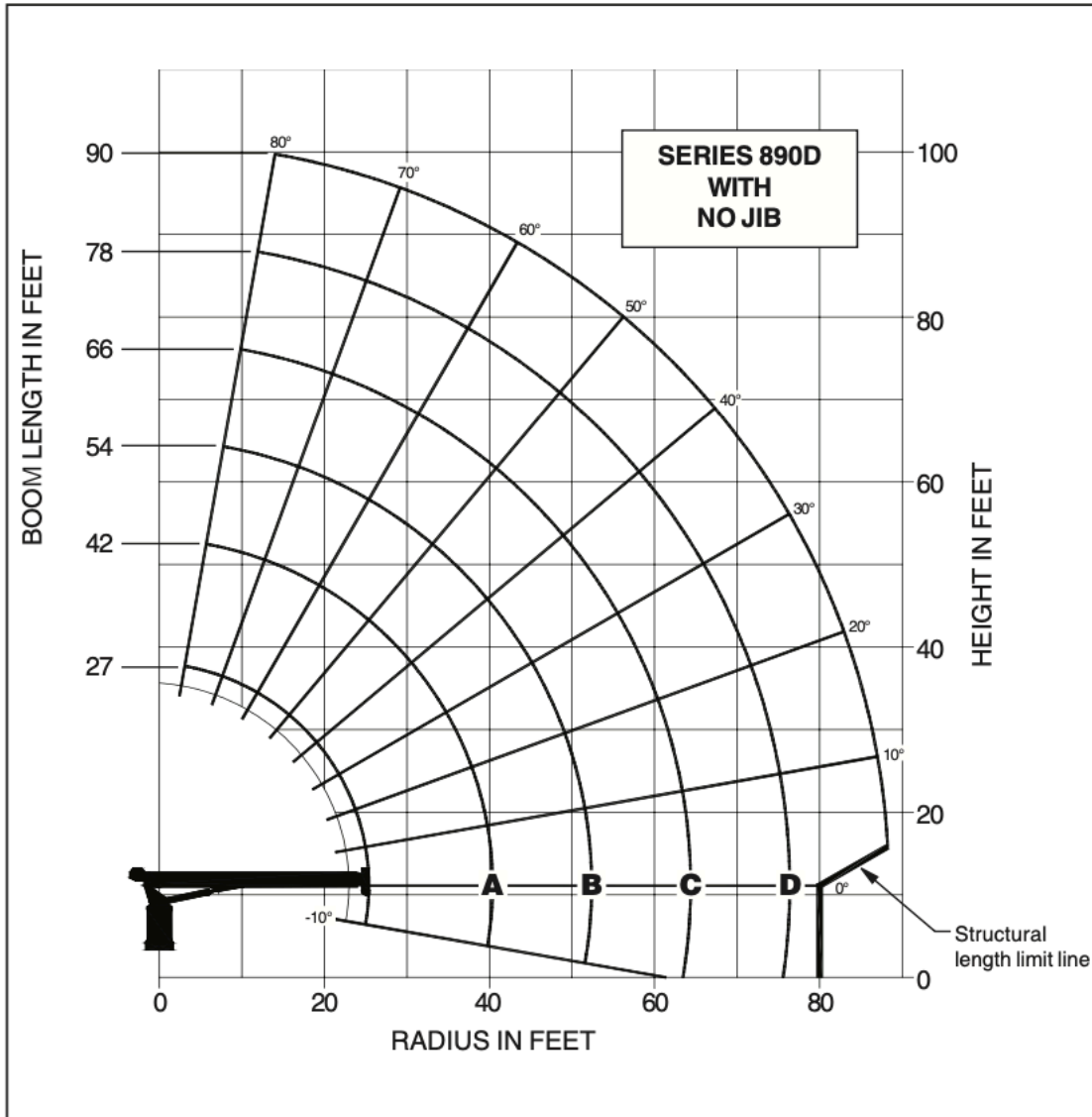
Crane Capacity, Height & Radius Comparison

CRANE CAPACITY AT RADIUS

Jib Req. Ft Radius	23 Ton 890D	50 Ton 50128SHL	60 Ton NBT60XL	80 Ton TMS800E	115 Ton TMS9000-2	115 Ton w/CW TMS9000-2
5	45,660	98,390	119,600	159,600	179,600	229,400
10	27,060	74,790	89,100	146,600	160,600	172,900
15	20,360	57,390	66,900	110,600	125,100	154,900
20	14,160	46,090	52,750	87,250	96,300	134,900
25	10,360	37,130	44,350	63,350	74,150	109,400
30	8,460	30,490	37,200	45,250	56,500	86,450
35	6,710	25,190	30,700	35,050	43,650	70,450
40	5,510	21,380	25,550	28,550	34,700	59,300
45	4,560	18,180	21,700	23,950	28,800	49,200
50	3,360	15,610	18,550	19,850	24,450	41,700
55	3,010	13,320	15,700	16,900	20,800	36,750
60	2,560	11,570	13,450	14,700	18,100	31,800
65	2,110	10,010	11,500	12,950	15,800	27,800
70	1,710	8,610	10,000	11,200	14,150	24,400
75	1,360	7,100	8,720	9,700	12,600	21,800
80	1,010	6,420	7,580	8,390	11,150	19,400
85	510	5,300	6,590	7,270	9,950	17,900
90		4,790	5,790	6,270 - 6,340	8,890	16,300
95		4,320	5,030	5,380 - 5,890	7,710	14,800
100		3,520	4,400	4,590 - 5,350	6,880	13,600
105		3,150	3,800	3,880 - 4,630	6,160	12,500
110		2,820	3,260 - 3,620	3,250 - 4,360	5,160	10,900
115		2,240	2,790 - 3,390	2,680 - 3,940	4,580	10,000
120		1,960	2,350 - 3,080	2,160 - 3,440	3,710	8,880
125		1,810	1,960 - 2,680	2,740	3,220	8,300
130		1,560	1,600 - 2,310	2,410	2,780	7,590
135		1,320	1,220 - 1,990	2,140	1,910	7,170
140		1,100	320 - 1,690	2,000	1,540	4,710
145		880	1,260	1,710	1,210	4,590
150		670	1,010	1,330		4,320
155		470	780	980		3,820
160			410	660		3,340
165			210			2,660
170						2,760
175						2,570
180						2,170
185						1,800
190						1,270
195						970
200						680

Crane Capacity, Height & Radius Comparison

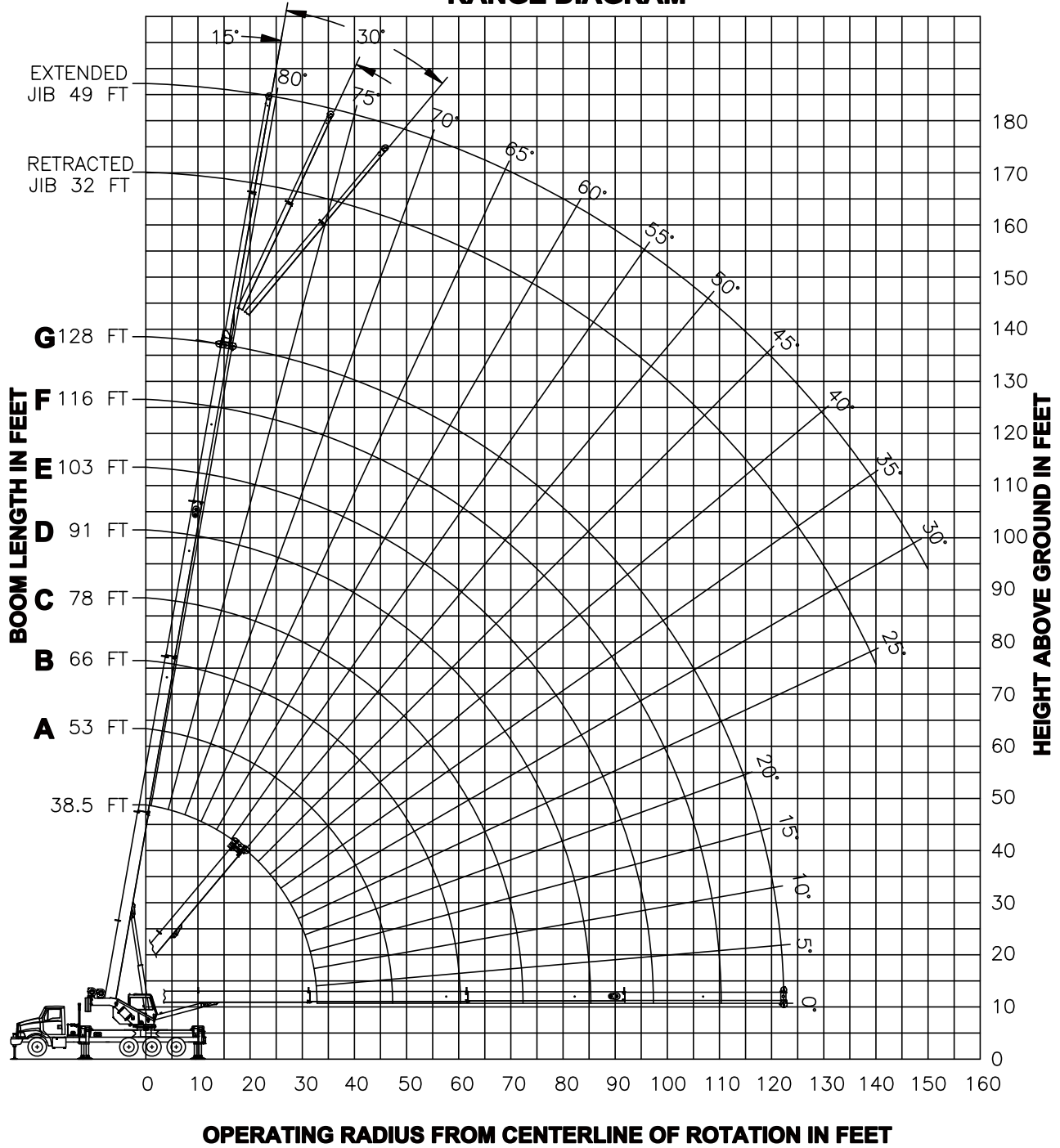
23 Ton National 890D



Crane Capacity, Height & Radius Comparison

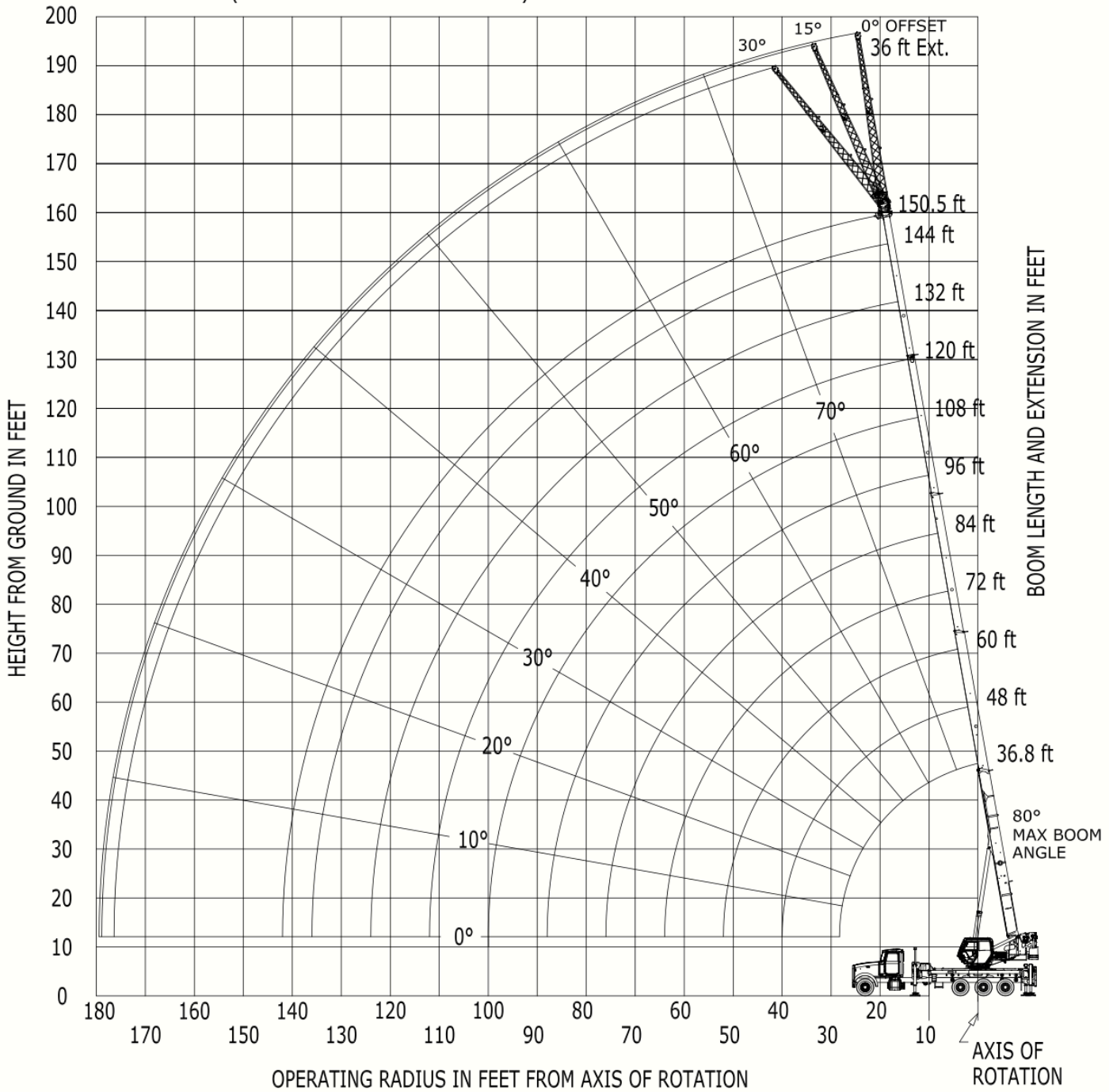
50 Ton Manitex 50128SHL

- RANGE DIAGRAM -



Crane Capacity, Height & Radius Comparison

60 Ton National NBT60XL



Crane Capacity, Height & Radius Comparison

115 Ton Grove TMS9000-2

